

This Owner's Manual is provided and hosted by [Appliance Factory Parts](#).



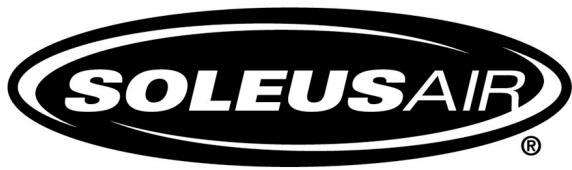
# SOLEUSAIR JC-128E Owner's Manual

[Shop genuine replacement parts for SOLEUSAIR  
JC-128E](#)



[Find Your SOLEUSAIR Refrigerator Parts - Select From 5 Models](#)

----- Manual continues below -----



# 45 Bottle Wine Cooler/ Beverage Center

OWNER'S MANUAL  
Model # JC-128E



**Please read this owner's manual carefully before operating the unit.**

## INTRODUCTION

Thank you for choosing a Soleus Air wine cooler. This owner's manual will provide you with valuable information for the proper care and maintenance of your new product. Please take a few moments to thoroughly read the instructions and familiarize yourself with all the operational aspects of your new heater.

Please complete the following information for future reference. You will need it to obtain warranty service.

Serial Number \*: \_\_\_\_\_

Date of Purchase: \_\_\_\_\_

Place of Purchase: \_\_\_\_\_

\*The Serial number is located on the back of the unit. Retain this owner's manual with your sales receipt as a permanent record of your purchase.

## TABLE OF CONTENTS

	<b>PAGE</b>
INTRODUCTION.....	2
TABLE OF CONTENTS.....	3
PACKAGE CONTENTS.....	3
IMPORTANT SAFEGUARDS.....	4
OPERATION.....	5
Unpacking the Wine Cooler.....	5
Connecting the Wine Cooler.....	5
Operating the Wine Cooler.....	5
Loading the Wine Cooler.....	6
MAINTENANCE.....	6
Cleaning the Wine Cooler.....	6
Moving the Wine Cooler.....	7
Defrosting the Wine Cooler.....	7
WINE COOLER DOOR.....	7
Door Reversal Instructions.....	7
TROUBLESHOOTING.....	8
TECHNICAL SPECIFICATIONS.....	9
CONTACT INFORMATION.....	9
WARRANTY.....	10

## PACKAGE CONTENTS

- Wine Cooler
- 3 curved shelves
- 1 flat shelf
- 1 flat half-shelf
- 1 two-tier flat half-shelf
- Owner's Manual

## IMPORTANT SAFEGUARDS

**When using electrical appliances, basic safety precautions should be followed to reduce the risk of fire, electric shock, and injury to persons or property. Before you use your wine cooler, please read all instructions carefully.**

Use this appliance only for its intended purpose as described in this owner's manual.

This wine cooler must be properly installed in accordance with the installation instructions before it is used.

- 1) Before throwing away a refrigerator or beverage center, make sure the doors have been removed. For added assurance, leave the shelves in place so that children may not easily climb in.
- 2) DO NOT clean your beverage center with flammable fluids. The fumes can create a fire hazard or explosion.
- 3) DO NOT tip over.
- 4) If the wine cooler is brought in from outside in the winter season, give it a few hours to warm up to room temperature before plugging it in.
- 5) Repair or replace immediately ALL electric service cords that have become frayed or otherwise damaged. DO NOT use a cord that shows cracks or abrasion damage along its length, the plug, or the connector end.
- 6) Unplug your wine cooler before cleaning or before making any repairs. **NOTE:** If for any reason this product requires service, we strongly recommend that a certified technician perform the service.
- 7) DO NOT operate your wine cooler in the presence of explosive fumes.
- 8) The power supply must be properly grounded.
- 9) Never unplug your wine cooler by pulling on the power cord. Always grasp the plug firmly and pull straight out from the outlet.
- 10) DO NOT use an adapter plug or extension cord.
- 11) DO NOT store foods in wine cooler, as interior temperature may not be cool enough to prevent spoilage.
- 12) Exercise caution and use reasonable supervision when appliance is used near children.

## OPERATION

### Unpacking the Wine Cooler

- 1) Remove the exterior and interior packaging.
- 2) Make sure that all the package contents are included with your wine cooler.  
It is advisable to clean the inside of the wine cooler with lukewarm water and a soft cloth, and then to dry it thoroughly prior to use.
- 3) Find a location for your unit that is protected from direct sunlight and other sources of heat. Place the unit on a level surface. Make sure that there is at least 5 inches of space between the back of your unit and the wall. Avoid locating the appliance in moist areas. Too much moisture in the air will cause condensation to form, requiring more frequent defrosting of the unit.
- 4) Allow one hour for the refrigerant fluid to settle before plugging it in.  
The refrigeration system of the cabinet is designed to operate with the cabinet located on a flat surface. Avoid tilting the cabinet side.

### Connecting the Wine Cooler

#### **Improper use of the grounded plug can result in the risk of electrical shock.**

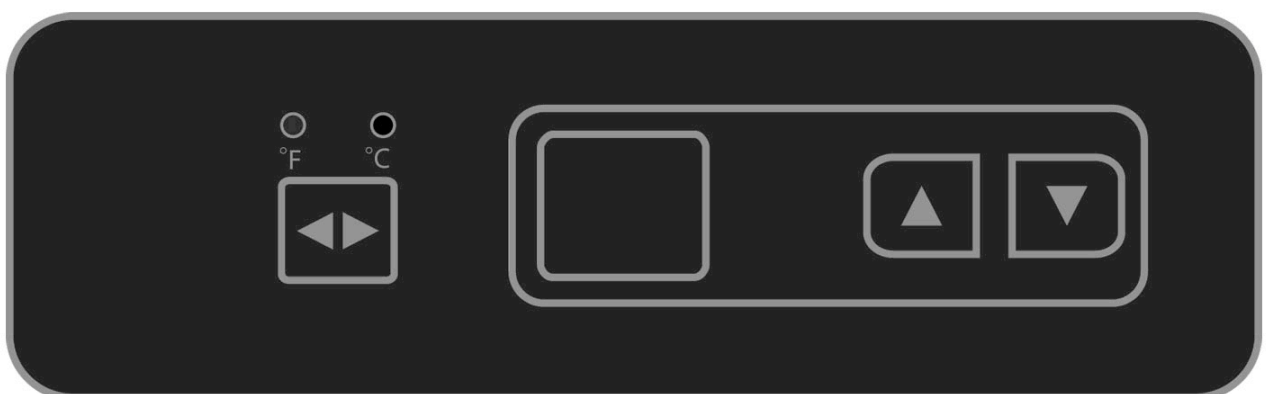
This unit should be properly grounded for your safety. The power cord is equipped with a three-prong plug which mates with standard three-prong wall outlets to minimize the possibility of electrical shock.

Plug your appliance into an exclusive, properly installed, grounded wall outlet. DO NOT under any circumstances cut or remove the third (ground) prong from the power cord. Any questions concerning power and or grounding should be directed toward a certified electrician.

This appliance requires a standard 115/120volt, 60Hz electrical outlet with three-prong ground.

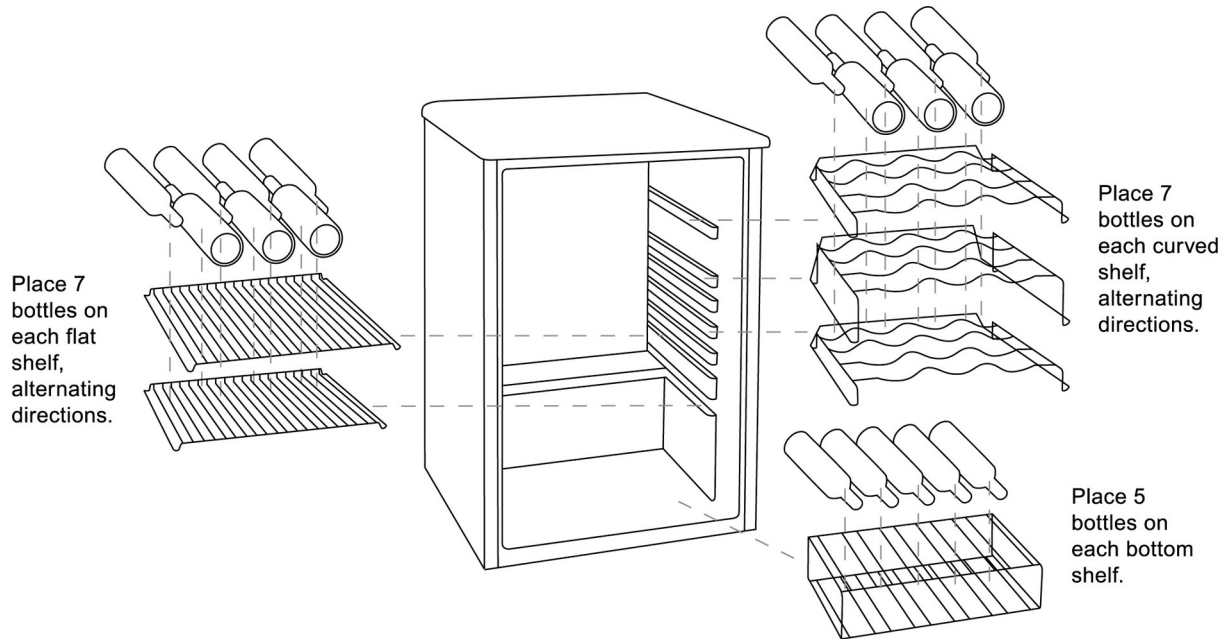
### Operating the Wine Cooler

- 1) Press the up or down arrow buttons to set the desired temperature between 39-60°F.
- 2) Press the °C/°F button to change temperature display from Centigrade to Fahrenheit, if necessary.



## Loading the Wine Cooler

In order to maximize storage space in your wine cooler, please insert the wine bottles according to the following diagram:



## MAINTENANCE

### Cleaning the Wine Cooler

- 1) Turn the temperature control to "0", unplug the unit, and remove the bottles and shelves.
- 2) Wash the inside with a damp warm cloth containing water and baking soda solution. The solution should be about two tablespoons of baking soda to 1 quart (32 oz) of water.
- 3) Wash the shelves with a mild detergent solution.
- 4) Make sure the door gasket (seal) is kept clean in order to keep the unit running efficiently.
- 5) The outside of the beverage center should be cleaned regularly with a mild detergent solution and warm water.
- 6) Dry the interior and exterior with a soft cloth.

## Moving the Wine Cooler

- 1) Remove all contents and make sure to tape down any loose items.
- 2) To avoid damaging the leveling screws, turn them all the way into the base.
- 3) Tape the door shut.
- 4) Make sure your unit stays in the upright position during transportation.

## Defrosting the Wine Cooler

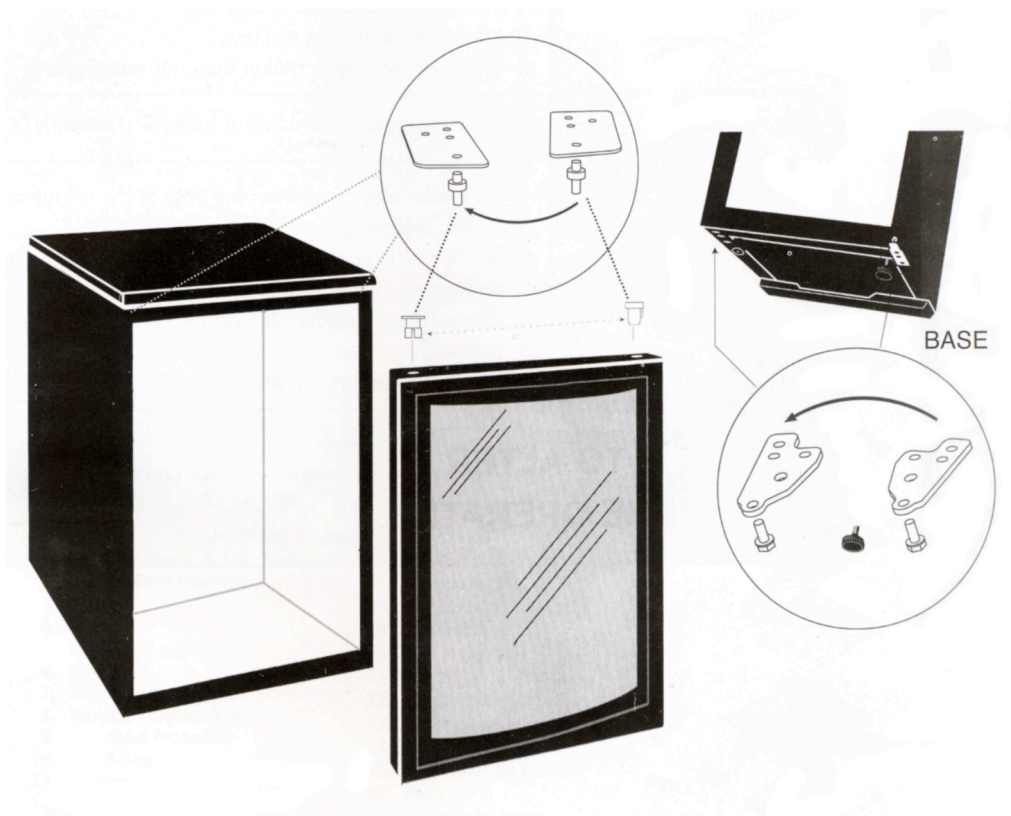
Your wine cooler is designed with an "Auto-Cycle" defrost system. The refrigerated surfaces of the unit will defrost automatically, during the "off" cycle of the cold control. Water from the unit is disposed of automatically, by means of being channeled onto a drip tray located on the compressor. Heat transfer from the compressor causes this water to evaporate.

**Please Note:** DO NOT use boiling water to defrost because it may damage the plastic parts. In addition, NEVER use a sharp or metallic instrument to remove frost as it may damage the cooling coils.

## WINE COOLER DOOR

### Door Reversal Instructions

Your wine cooler is built with a reversible door. You have the choice of either opening it from the left or right sides. In order to reverse the opening direction of your door, please follow the below diagram.





## TROUBLESHOOTING

<p>Wine Cooler does not work</p>	<ol style="list-style-type: none"> <li>1. It may not be plugged in.</li> <li>2. The circuit breaker tripped or the fuse may be blown.</li> <li>3. The thermostat may be set to "0."</li> </ol>
<p>The compressor turns on and off frequently</p>	<ol style="list-style-type: none"> <li>1. The room temperature is hotter than usual.</li> <li>2. The wine cooler is filled to its maximum capacity.</li> <li>3. The door is opened too often.</li> <li>4. The door is not closed completely.</li> <li>5. The thermostat is set too low.</li> <li>6. The door's magnetic gasket does not seal properly.</li> </ol>
<p>Vibrations</p>	<ol style="list-style-type: none"> <li>1. The wine cooler may not be leveled properly.</li> </ol>
<p>The unit makes too much noise</p>	<ol style="list-style-type: none"> <li>1. Low noise may come from the flow of the refrigerant during the refrigeration cycle, which is normal.</li> <li>2. As each cycle ends, gurgling sounds caused by the flow of refrigerant in your cooler are normal.</li> <li>3. Contraction and expansion of the inside walls may cause popping and crackling noises.</li> <li>4. The beverage center is not level.</li> </ol>
<p>The door will not close properly</p>	<ol style="list-style-type: none"> <li>1. The unit is not level.</li> <li>2. The doors were reversed and not properly installed.</li> <li>3. The gasket is dirty.</li> <li>4. The shelves are out of position.</li> </ol>

## TECHNICAL SPECIFICATIONS

MODEL	JC-128E
POWER SUPPLY	115/120V - 60Hz
CAPACITY	4.6 CU FT / 45 BOTTLES
TEMPERATURE	39°F - 60°F BASED ON 77°F – 80°F DEGREE ROOM TEMPERATURE
DIMENSIONS	21.5"W x22.5"D x32.5"H
WEIGHT	86 LBS.

ALL INFORMATION AND THE TECHNICAL SPECIFICATIONS PRESENTED IN THIS USER'S MANUAL ARE THE PRESENTATION OF THE MANUFACTURER. SOLEUS INTERNATIONAL HAS NOT CONDUCTED INDEPENDENT TESTS ON THE INFORMATION AND THE SPECIFICATIONS PRESENTED HERE WITHIN.

## CONTACT INFORMATION

Soleus International Inc.  
9451 Telstar Ave.  
El Monte, CA 91731 USA  
(888) 876-5387  
[www.soleusair.com](http://www.soleusair.com)

Contact For: Replacement Parts  
Technical Support  
Warranty Claim  
Customer Service

# WARRANTY

## One Year Limited Warranty

Soleus International Inc. warrants the accompanying Soleus Air JC-128E to be free of defects in material and workmanship for the applications specified in its operation instruction for a period of ONE (1) year from the date of original retail purchase in the United States

If the unit exhibits a defect in normal use, Soleus International Inc. will, at its option, either repair or replace it, free of charge within a reasonable time after the unit is returned during the warranty period.

As a condition to any warranty service obligation, the consumer must present this Warranty Certificate along with a copy of the original purchase invoice.

### **THIS WARRANTY DOES NOT COVER:**

- 1) Damage, accidental or otherwise, to the unit while in the possession of a consumer not caused by a defect in material or workmanship.
- 2) Damage caused by consumer misuse, tampering, or failure to follow the care and special handling provisions in the instructions.
- 3) Damage to the finish of the case, or other appearance parts caused by wear.
- 4) Damage caused by repairs or alterations of the unit by anyone other than those authorized by Soleus International Inc.
- 5) Freight and Insurance cost for the warranty service.

ALL WARRANTIES, INCLUDING ANY IMPLIED WARRANTY OF MERCHANT ABILITY ARE LIMITED TO ONE-YEAR DURATION OF THIS EXPRESS LIMITED WARRANTY. **SOLEUS INTERNATIONAL INC.** DISCLAIMS ANY LIABILITY FOR CONSEQUENTIAL OR INCIDENTAL DAMAGES AND IN NO EVENT SHALL SOLEUS INTERNATIONAL INC'S LIABILITY EXCEED THE RETAIL VALUE OF THE UNIT FOR BREACH OF ANY WRITTEN OR IMPLIED WARRANTY WITH RESPECT TO THIS UNIT.

This warranty covers only new products purchased from our authorized dealers or retailers. It does not cover used, salvaged, or refurbished products.

As some states do not allow the limitation or exclusion of incidental or consequential damages, or do not allow limitation on implied warranties, the above limitations and exclusions may not apply to you. This warranty gives you specific legal rights, and you may also have other rights that vary from state to state.

### **For Technical Support & Warranty Service**

Please Call (888) 876-5387

Or Write To:

Soleus International Inc.  
9451 Telstar Ave.  
El Monte, CA 91731 USA  
[www.soleusair.com](http://www.soleusair.com)