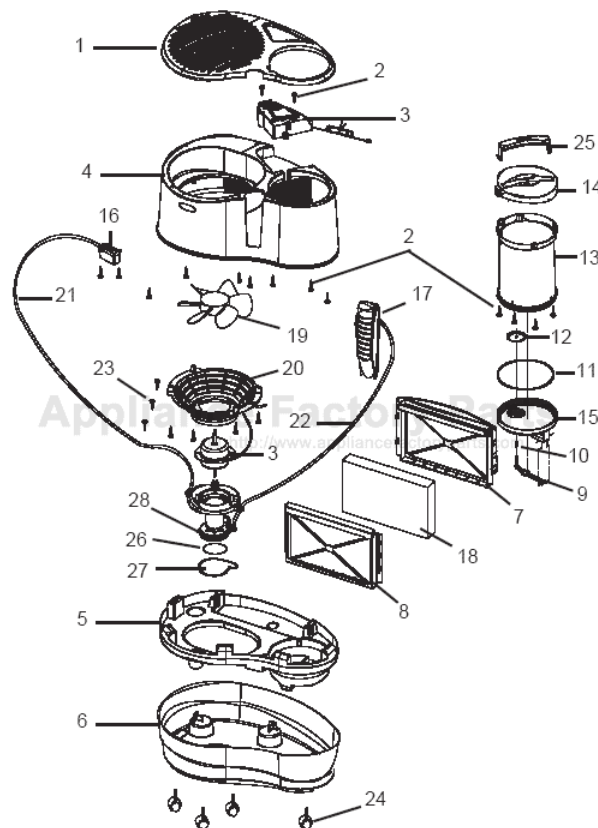


This Owner's Manual is provided and hosted by [Appliance Factory Parts](http://ApplianceFactoryParts.com).



AIR KING 9929 Owner's Manual

[Shop genuine replacement parts for AIR KING 9929](#)



[Find Your AIR KING Humidifier Parts - Select From 46 Models](#)

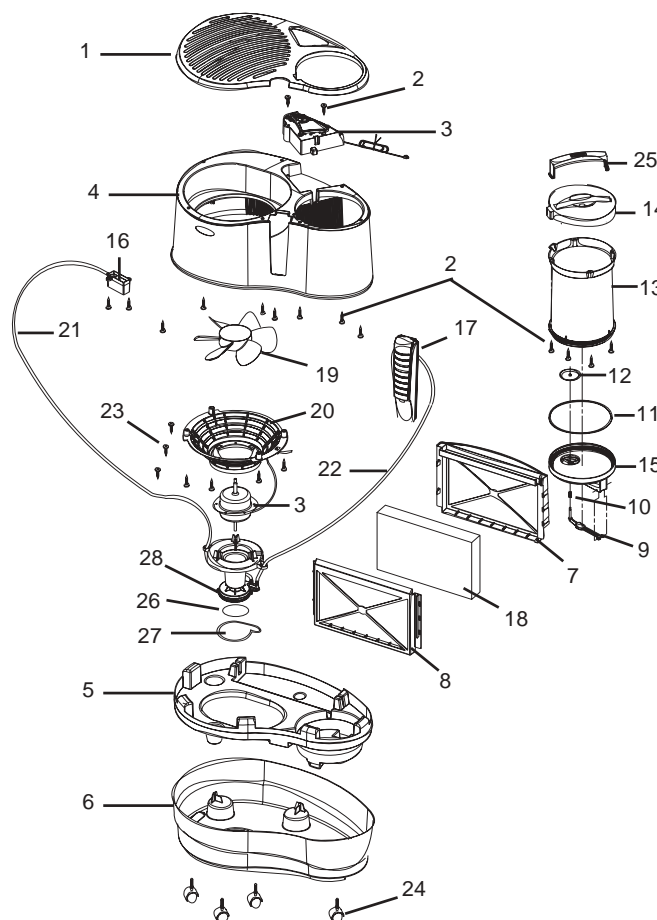
----- Manual continues below -----

MODEL 3LA79A/9929A

TROUBLE SHOOTING GUIDE

TROUBLE	PROBABLE CAUSE	SOLUTION
Fan not working or Humidifier doesn't turn on	<ul style="list-style-type: none"> No power Humidistat not set correctly Top of Humidifier not seated properly on Base (Unit is equipped with an automatic shut off) Filter Holder not assembled properly or is missing (Unit is equipped with an automatic shut off) 	<p>Make sure Unit is plugged in Check that the Power Switch is On Set Humidistat to higher humidity level Make sure top is properly seated on Base</p> <p>Make sure Filter Holder is seated in place</p>
Water leaking	<ul style="list-style-type: none"> Base is overfilled Filter is old and dirty 	<p>Reduce water level in Base Replace Filter</p>
Foul odor	<ul style="list-style-type: none"> Filter needs to be replaced Base needs to be cleaned Whole Humidifier needs cleaning 	<p>Replace Filter</p> <p>Follow Instructions in CLEANING section Follow Instructions in CLEANING section</p>
Filter discoloration	<ul style="list-style-type: none"> Mineral deposits in water 	<p>Replace Filter</p>
Water discoloration	<ul style="list-style-type: none"> Humidifier needs to be cleaned Hard water - Iron in water Some humidifier additives can cause discoloration 	<p>Follow Instructions in CLEANING section Use filtered or distilled water</p>
Lights do not work: Humidistat Light Off, Power Light On Power Light Off, Humidistat Light On	<ul style="list-style-type: none"> Humidity is not yet achieved in room Room has reached desired Humidity level 	<p>Allow Humidifier to continue running</p> <p>Set Humidity Knob for more Humidity</p>
No water show	<ul style="list-style-type: none"> No water in Unit Hose not connected to Pump Hose not connected to Water Show 	<p>Refill Unit Connect Hose to Pump Connect Hose to Water Show</p>

KEY	PART NO.	DESCRIPTION	QTY.
1	2010598	Humidifier Top	1
2	02091220I	Screw #8 x 1/2 PPH Type 30A ZP	15
3	02030008EG	Motor/Control Box Assembly	1
4	2010588	Chassis	1
5	2010590	Drip Shield	1
6	2010591EG	Base	1
7	2010592	Front Filter Holder	1
8	2010593	Rear Filter Holder	1
9	02010860S	Lever	1
10	02010861	Spring	1
11	02010862	O-Ring	1
12	02010871	Plunger	1
13	2010844	Jug	1
14	2010597	Jug Top	1
15	2010596	Jug Lid	1
16	02010868S	Water Distribution Block	1
17	02010869S	Water Show Assembly	1
18	2010870	Filter	1
19	2011073	Blade	1
20	2011074	Basket	1
21	2069093	Tube 1/4" x 24 1/2"	1
22	2069094	Tube 1/4" x 15 1/2"	1
23	02091221I	Screw #8 X 3/4" PTH Type 30A ZP	7
24	02098038	Castors	4
25	02010601	Handle	1
26	02010867S	Impellor	1
27	02010866LS	Lower Pump Housing	1
28	02010866US	Upper Pump Housing	1



MODEL 3LA79A/9929A

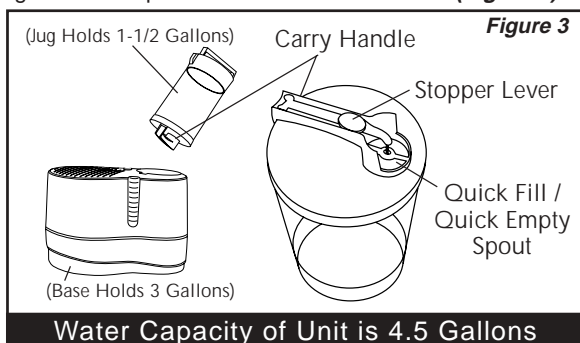
CAUTION: Do not pour water through the Exhaust Grill on the Upper Housing. Doing so may cause damage and personal injury.



CAUTION: • **Unplug Unit when filling.**

- Always place Humidifier on a firm level surface. Locate the Power Cord so the Humidifier is not resting on it, and is away from traffic.
- Be careful not to overfill.
- **Do not pour water through Exhaust Grill**, doing so may cause damage and personal injury.
- Take extra care to prevent water spillage that may damage furniture or flooring. The manufacturer will not accept responsibility for damage to property caused by water spillage.
- Always be sure the Power Knob is in the **OFF** position when plugging Humidifier into a grounded 120 volt AC wall outlet.
- To prevent risk of electrical shock and injury to persons, do not plug Humidifier into electrical outlet with wet hands.

1. It is recommended that all Humidifiers be cleaned prior to use. Please read **Cleaning Instructions** for Base and Jug cleaning.
2. Use the convenient Carrying Handle found on the bottom of the Water Jug to bring it to a faucet. The Water Jug features a 'Quick Fill/Quick Empty' Spout. To fill, hold Jug upside down by the Handle. Use thumb to press down Stopper Lever, and fill Jug. Fill the Water Jug with cool tap water. **Never use hot water.** (Figure 3)



When the Jug is replaced back into the Base it will quickly empty to fill Base.

NOTE: While carrying filled Water Jug back to the Humidifier, hold the Handle with one hand, while supporting bottom of Water Jug with other hand.

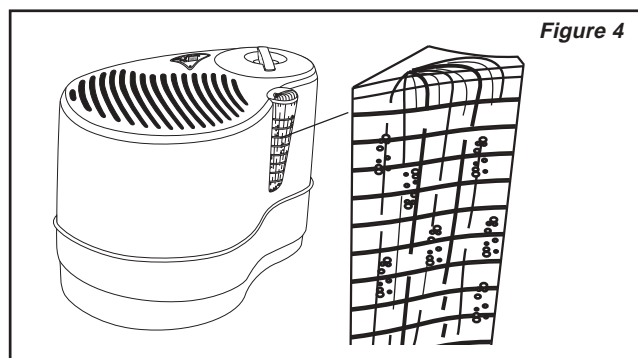
3. Place the Water Jug securely in the Base. If positioned properly, water will quickly pour into Base and automatically stop when reaching desired amount.
4. When gurgling noise stops lift up the Water Jug to see if it is empty. Refill if empty. When the Unit is full, some water will remain in the Jug.
5. Even though your Humidifier will produce approximately 9.0 gallons in a 24 hour period*, the water capacity (amount of water the Humidifier will hold at one time) is 4.5 gallons. (3 FULL Jugs).

OPERATION

1. Turn fan speed knob to desired speed.
 - 3 - For fast humidification of a large room or house, approximately 9 gallon per day.*
 - 2 - For normal operation.
 - 1 - For quiet, night time operation or after desired moisture level is reached.

* Calculations based on ambient room conditions of 70° F and 30% relative humidity in a room of average insulation.

The presence of water flow in the Water Show Window indicates the circulation of water to the Filter. (Figure 4)



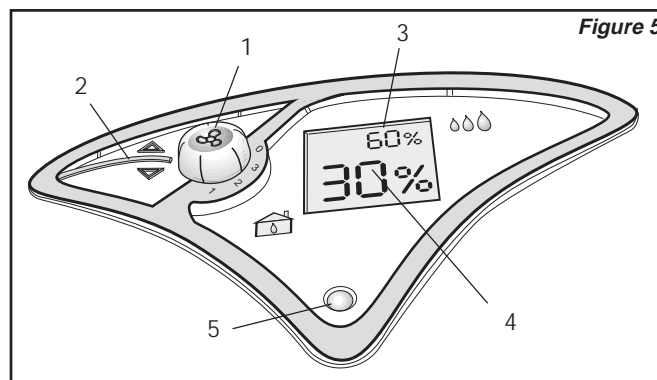
The correct room humidity display will set itself 10 seconds after the power cord is plugged into a 120 V outlet.

2. Push the humidity set button▲ up or▼ down, to adjust the humidity to the desired level. The desired humidity range is 25% to 95%.

The desired humidity level is displayed in small numbers and the correct room humidity % is displayed in large numbers.

Once the current room humidity level reaches the desired humidity level, the fan will turn off and the humidity indicator light will come on. This light indicates that the humidifier is still on and will again start when the current room humidity level falls below the desired set level.

If the current room humidity drops below 25% or goes above 95%, the display will blink off and on until the current room humidity is within the 30% to 90% range.



1. **Fan Speed Knob**
2. **Humidity Set Button**
3. **Desired Humidity %**
4. **Current Room Humidity %**
5. **Humidity Indicator Light** - Light comes on when desired humidity level is the same or lower than current room humidity while the speed knob is in the on position.