

This Owner's Manual is provided and hosted by [Appliance Factory Parts](#).



GENERAL 747L Owner's Manual

[Shop genuine replacement parts for GENERAL 747L](#)



[Find Your GENERAL Humidifier Parts - Select From 70 Models](#)

----- Manual continues below -----

ENGLISH INSTALLATION INSTRUCTIONS

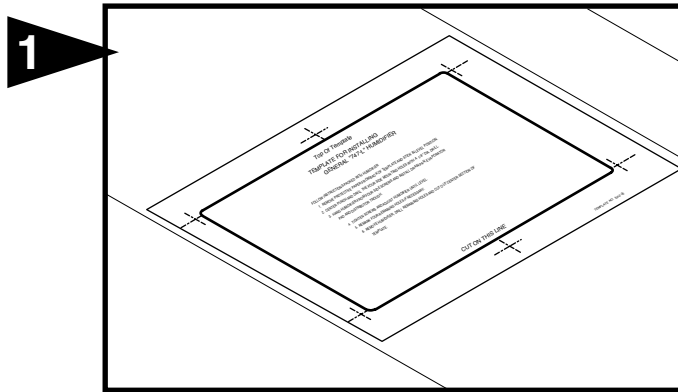
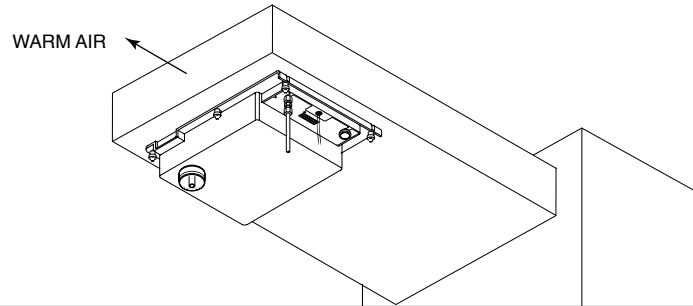
INSTALLER: PLEASE FILL OUT AND MAIL GUARANTEE CARD AFTER INSTALLATION IS COMPLETE. LEAVE INSTALLATION INSTRUCTIONS WITH HOME OWNER

PRECAUTION: The installer should be an experienced service technician. Disconnect electrical power before beginning installation. Do not install where temperatures fall below 32 degrees F or where plenum temperatures exceed 200 degrees F.

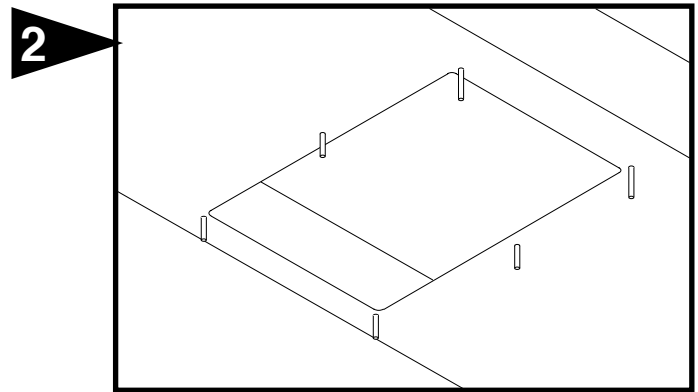
INSTALLATION: The humidifier may be mounted on the horizontal warm air duct only. See Typical Installation.

The following illustrations show steps for installing the humidifier on the horizontal supply duct of a forced warm air furnace. For maximum output, install the humidifier perpendicular to the air flow as shown. On supply ducts less than 16" wide the humidifier may be mounted parallel to the air flow, but will have reduced evaporative output.

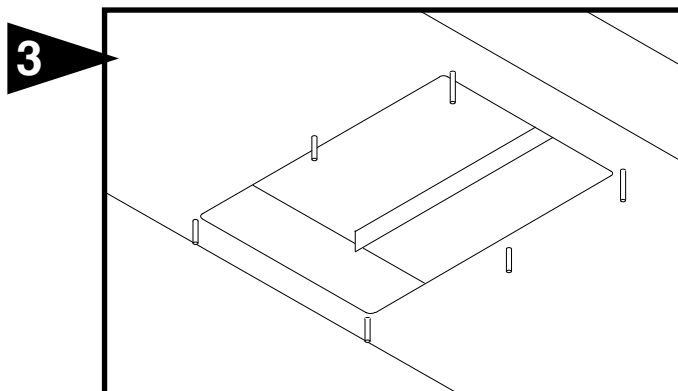
**FOR INSTALLATION ON
THE HORIZONTAL SUPPLY
DUCT OF ANY FORCED
WARM AIR FURNACE**



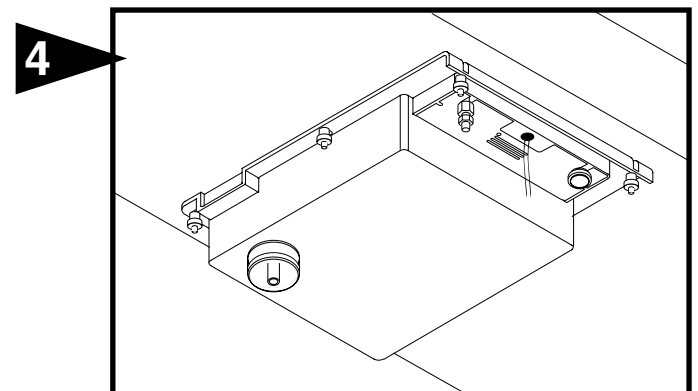
1 Select a location on the bottom surface of the warm air supply duct for mounting the humidifier. The mounting position should be at least 24" from the vertical supply plenum. Apply the mounting template.



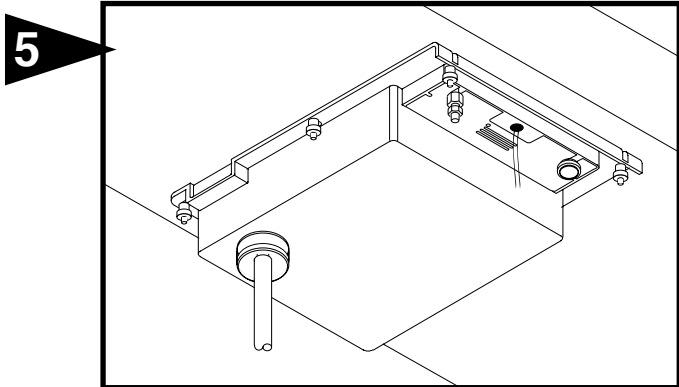
2 Center punch and drill the 6 mounting holes with a 1/4" drill. Cut out center section of template. Remove remaining template. Place mounting bracket inside duct with the 6 mounting studs down through the 1/4" holes. THE LONG STUDS HOLD THE MOTOR END OF THE HUMIDIFIER. Push two flat push-nuts on the central studs to hold the mounting bracket in place.



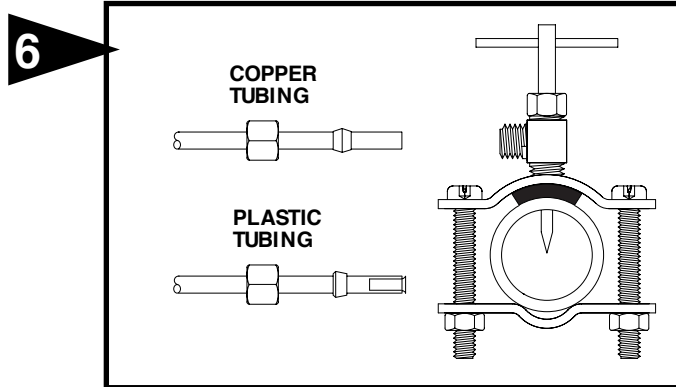
3 Install the right angle metal baffle on the upper inside surface of 8" or deeper supply ducts. Position the baffle 1" upstream from the centerline of the rotating drum. Mark and drill two 1/8" holes. Mount the baffle with the two sheet metal screws provided. For maximum evaporative output the 2" leg of the baffle should extend down.



4 Place humidifier on the mounting studs and fasten in place with the six thumb nuts supplied.



NOTE: If overflow protection is required, slide 5/8" I.D. vinyl tube (Pt. No. 1099-16) over quick-drain spout and run to suitable drain connection. Use a strain relief clamp within 36" of humidifier to prevent drain tube from pulling on quick-drain. Drain tube is not supplied with humidifier but is available in 5, 15 and 100 foot lengths.



Mount the self tapping saddle valve on either a cold or a hot water pipe. A side or top mount is best to avoid clogging from pipe sediment. Connect 1/4" O.D. tubing to the saddle valve. Copper tubing requires a brass compression nut and brass sleeve. Plastic tubing requires a brass insert inside the tubing, a plastic sleeve on the outside with a brass compression nut.

NOTE: DO NOT USE PLASTIC TUBING ON HOT WATER OR IN CONTACT WITH ANY HOT PLENUM SURFACE OR DUCT. INSTALLATION OF THIS SADDLE VALVE MUST MEET OR EXCEED LOCAL CODES AND ORDINANCES.

SADDLE VALVE INSTALLATION INSTRUCTIONS

Copper Pipe

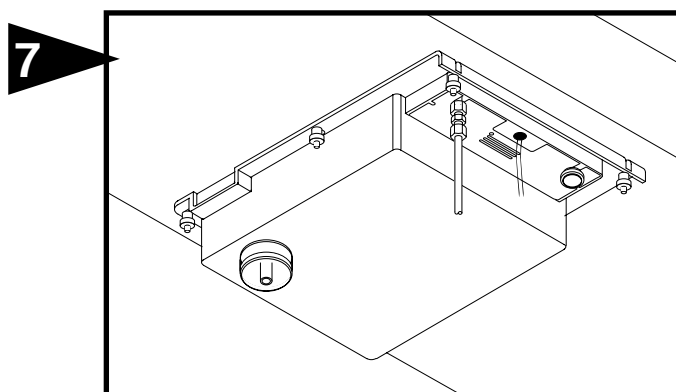
1. Retract piercing pin into valve body by turning handle counterclockwise.
2. Screw valve body into upper bracket and tighten.
3. Place rubber gasket over piercing pin.
4. Assemble saddle valve over copper pipe using enclosed screws, nuts and lower bracket.
5. Tighten screws evenly and firmly. Brackets should be parallel.
6. Complete compression connection to saddle valve outlet.
7. Turn handle clockwise to pierce tubing and close saddle valve.
8. Turn handle counterclockwise to open saddle valve, leave open for several seconds to flush dirt from pipe and tubing.

Steel, Brass or Hard Plastic Pipe

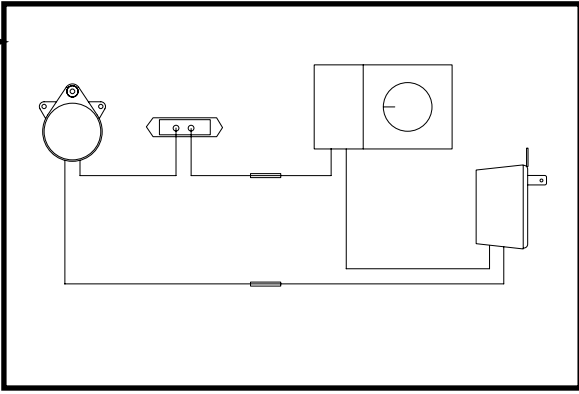
1. Shut off water supply and drain pipe.
2. Turn handle clockwise to expose piercing pin and close saddle valve.
3. Place rubber gasket over piercing pin.
4. Drill 1/8" hole in pipe using a hand crank drill to avoid shock hazard.
5. Assemble saddle valve over steel, brass or hard plastic pipe using enclosed screws, nuts and lower bracket.
6. Tighten screws evenly and firmly. Brackets should be parallel.
7. Complete compression connection to saddle valve outlet.
8. Turn handle counterclockwise to open saddle valve, leave open for several seconds to flush dirt from pipe and tubing.

Threaded Pipe Fittings

1. Turn handle clockwise to expose piercing pin and close saddle valve.
2. Seal valve body threads using pipe tape or sealant.
3. Install valve into 1/8" NPT fitting.
4. Complete compression connection to saddle valve outlet.
5. Turn handle counterclockwise to open saddle valve, leave open for several seconds to flush dirt from pipe and tubing.



Connect the 1/4" water supply tubing to the humidifier. Copper tubing requires a brass compression nut and brass sleeve. Plastic tubing requires a brass insert inside the tubing, a plastic sleeve on the outside with a brass compression nut. **DO NOT USE PLASTIC TUBING IN CONTACT WITH ANY HOT PLENUM SURFACE OR DUCT. IF USING PLASTIC TUBING, USE TUBE SUPPORT PROVIDED.**



ELECTRICAL

NOTE: The humidifier has a built-in "Humidity Control" which is an adjustable thermostat that completes the humidifier motor circuit on rising duct temperature. The thermostat senses the peaks and valleys of the modulating duct temperature caused by the furnace heating cycle. When the control is set on "HIGH", the humidifier will operate a greater percentage of the furnace cycle; and when set on "LOW", it will operate a lesser percentage of the cycle. A wall or duct mounted humidistat becomes an optional accessory with the built-in "Humidity Control".

WIRING 24 VOLT MODEL HUMIDISTAT OPTIONAL

The humidifier does not require connection to the furnace blower circuit. Connect the wire supplied to the two wires on the humidifier. Slide the plastic tubing over the terminals. Connect the two wires to the transformer and plug transformer into a 115 volt electrical outlet that will remain on at all times. Do not use an extension cord. If a humidistat is used in conjunction with the built-in "Humidity Control", connect the humidistat in series with the humidifier as shown and turn the "Humidity Control" to the "ON" position. ALL WIRING SHOULD COMPLY WITH LOCAL ELECTRICAL CODES.

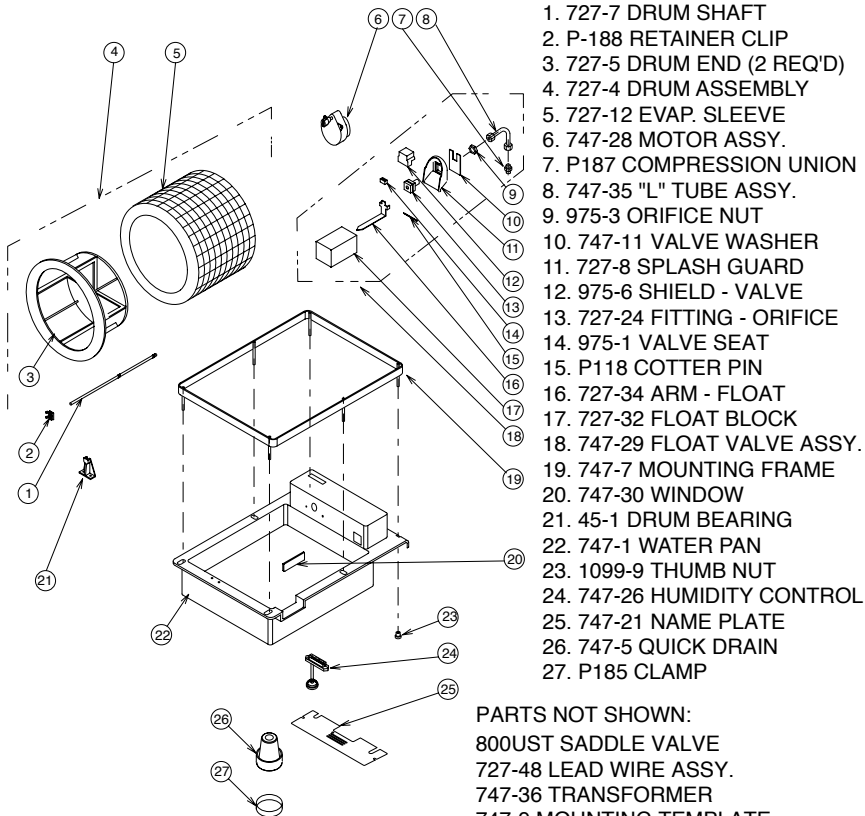
TEST RUN HUMIDIFIER

Turn on the water supply and electrical power. Set the "Humidity Control" to the "ON" position. The humidifier motor should turn the drum at 1 RPM. The float valve should maintain a water level of approximately 1-1/2 inches. The "OFF" position on the "Humidity Control" corresponds to a trunk duct temperature of 160°F. and the "ON" position to a temperature of 70°F. With the control set on "MED" (115°F.), the humidifier will run approximately 50% of the available furnace operating time. Initially the "Humidity Control" may be left on "MED" with instructions to the user to adjust higher or lower as required.

The mid-range set point for warm air heating systems employing heat pumps will be in the "HIGH" range because of the lower trunk duct temperatures. A humidistat may be required on heat pump systems.

INSTALLER: Please instruct user on the importance of frequent draining through the quick-drain device to keep water fresh and reduce the mineral concentration in the water pan.

PARTS LIST FOR HUMIDIFIER



1. 727-7 DRUM SHAFT
2. P-188 RETAINER CLIP
3. 727-5 DRUM END (2 REQ'D)
4. 727-4 DRUM ASSEMBLY
5. 727-12 EVAP. SLEEVE
6. 747-28 MOTOR ASSY.
7. P187 COMPRESSION UNION
8. 747-35 "L" TUBE ASSY.
9. 975-3 ORIFICE NUT
10. 747-11 VALVE WASHER
11. 727-8 SPLASH GUARD
12. 975-6 SHIELD - VALVE
13. 727-24 FITTING - ORIFICE
14. 975-1 VALVE SEAT
15. P118 COTTER PIN
16. 727-34 ARM - FLOAT
17. 727-32 FLOAT BLOCK
18. 747-29 FLOAT VALVE ASSY.
19. 747-7 MOUNTING FRAME
20. 747-30 WINDOW
21. 45-1 DRUM BEARING
22. 747-1 WATER PAN
23. 1099-9 THUMB NUT
24. 747-26 HUMIDITY CONTROL
25. 747-21 NAME PLATE
26. 747-5 QUICK DRAIN
27. P185 CLAMP

PARTS NOT SHOWN:

- 800UST SADDLE VALVE
- 727-48 LEAD WIRE ASSY.
- 747-36 TRANSFORMER
- 747-9 MOUNTING TEMPLATE
- 747-38 WATER SUPPLY TUBE KIT

**FILL OUT AND MAIL THIS
WARRANTY CARD AND
LITERATURE REQUEST FORM**

- AIR CLEANERS AND AIR PURIFIERS
- HUMIDIFIERS
- DIGITAL HUMIDITY GAGE
- AIR FILTER GAGE
- FUEL OIL FILTERS AND ACCESSORIES

LIMITED WARRANTY

This humidifier, if properly registered by the return of the warranty registration card to the manufacturer, is warranted to the consumer against defects in materials and workmanship for a period of one year from the date of installation. Evaporator pads, sleeves or plates are not covered by this limited warranty or any other warranties. Any other defective parts will be repaired without charge except for removal, reinstallation and transportation costs. To obtain repair service under this limited warranty, the consumer must send the defective part or the complete humidifier to the manufacturer.

THERE ARE NO EXPRESS WARRANTIES COVERING THIS HUMIDIFIER OTHER THAN AS SET FORTH ABOVE, THE IMPLIED WARRANTIES OF MERCHANTABILITY AND FITNESS FOR A PARTICULAR PURPOSE ARE LIMITED IN DURATION TO ONE YEAR. THE MANUFACTURER ASSUMES NO LIABILITY IN CONNECTION WITH THE INSTALLATION OR USE OF THIS PRODUCT, EXCEPT AS STATED IN THIS LIMITED WARRANTY. THE MANUFACTURER WILL IN NO EVENT BE LIABLE FOR INCIDENTAL OR CONSEQUENTIAL DAMAGES.

This limited warranty gives you specific legal rights, and you may also have other rights which vary from state to state. Some states do not allow either limitations on implied warranties, or exclusions from incidental or consequential damages, so the above exclusion and limitation may not apply to you.

Any questions pertaining to this limited warranty should be addressed to the manufacturer. (U.S.A.: The manufacturer has elected not to make available the informal dispute settlement mechanism which is specified in the Magnuson-Moss Warranty Act.)

GENERAL FILTERS, INC. 43800 GRAND RIVER AVE. NOVI, MICHIGAN 48375-1115 WWW.GENERALFAIRE.COM
CANADIAN GENERAL FILTERS, LTD. 39 CROCKFORD BLVD. SCARBOROUGH, ONTARIO M1R3B7 WWW.CGFPRODUCTS.COM

CARE AND MAINTENANCE

This humidifier is an evaporative type which removes all the minerals from the water it evaporates. The minerals are retained in the evaporator sleeve and water pan, and are not blown into the air stream to collect in the living area. Cleaning will be required approximately every two months. In hard water areas, more frequent cleaning may be necessary. We recommend draining the humidifier weekly to keep the water fresh and reduce the mineral concentration in the water pan.

1. Disconnect electrical power to humidifier.
2. Turn water supply off.
3. Drain water reservoir by pulling quick-drain tube straight down, allowing water to drain into bucket. Approximately one gallon of water is in the humidifier. Note: If the humidifier is drained weekly to reduce the mineral concentration in the water pan, a through cleaning may be necessary only once each season. This will depend on the mineral hardness in the water supply.
4. Loosen two thumb nuts at nameplate end of humidifier at least four turns but do not remove. Remove four remaining nuts and allow unit to swing into the service position. Caution: Make certain water has been drained from reservoir per Step 3.
5. Lift drum shaft from bearing and move drum away from motor to disengage shaft from motor coupling. Remove drum assembly from humidifier. Squeeze tabs on the green retainer clip and slide clip off shaft end. The drum halves may now be separated for easy evaporator sleeve removal. Clean evaporator sleeve in a solution of 1/2 vinegar and water or a mild detergent and water. The evaporator sleeve should be replaced at least once during the heating season. The correct replacement sleeve is part number 727-12.
6. Remove the plastic shield from the float valve. Remove and clean the neoprene valve seat, part number 975-1. The valve seat may be reversed if wear occurs. Note: To remove the entire valve assembly, disconnect the 1/4 inch water supply line. Remove the three nameplate screws. Loosen the hex nut on the valve orifice and remove the "U" shaped valve washer. The valve assembly is removable from inside the water reservoir.
7. Reassemble humidifier and check operation by connecting electrical power, turning the "Humidity Control" and water on.

8. During the summer season, turn humidifier and water supply off, drain pan and clean thoroughly. Replace evaporator sleeve for next season.

CAUTION

DO NOT ROTATE DRUM MANUALLY OR STOP ROTATION AS DAMAGE TO MOTOR GEAR TRAIN MAY RESULT.

HOW THE HUMIDIFIER WORKS

The operating principle of the humidifier is based on the most efficient and economical means of evaporating water to the air. The furnace produces the heat necessary for evaporating the water.

Water is supplied to the humidifier by a float valve that maintains a constant water level. The evaporator sleeve is driven by a gear motor and rotates in a reservoir of water. Moisture is evaporated into the air as it passes through the wetted sleeve.

The humidifier has a manual Humidity Control that uses an adjustable thermostat to detect changes in duct temperature caused by the furnace. The thermostat starts the humidifier motor as duct temperature increases. When the control is set on "HIGH" the humidifier will operate for a larger portion of the furnace heating cycle. When set on "LOW" it will operate for a smaller portion of the furnace cycle. If the Humidity Control is set to "ON", the humidifier will run continuously. When the humidifier is operating, no adjustment is necessary other than setting the Humidity Control or Humidistat.

If a Humidistat is used, turn the Humidity Control to the "ON" position and adjust the Humidistat in accordance with the recommended settings. High settings may cause moisture on windows and other cold surfaces. It is suggested that initially the Humidity Control be set on "MED" then adjusted higher or lower as desired after several days of operation.

Turn the Humidity Control to the lowest setting when the home is left unattended for extended periods. During the summer season, turn the water and electrical supply to the humidifier off.

**LE PROPRIÉTAIRE DOIT REMPLIR LA CARTE
D'ENREGISTREMENT
ET LA POSTER AU :**
**OWNER FILL IN
REGISTRATION
AND MAIL TO:**

GENERAL FILTERS, INC.
43800 GRAND RIVER AVE.
NOVI, MI 48375-1115

WARRANTY REGISTRATION Enregistrement de la garantie

MODEL 747-L DRUM HUMIDIFIER
DRUM HUMIDIFICATEUR MODÈLE 747-L

OWNER'S NAME

Nom du propriétaire: _____

STREET ADDRESS

Adresse: _____

CITY

Ville: _____

STATE

Province: _____

POSTAL CODE

Code postal: _____

DEALER'S NAME

Nom du marchand: _____

STREET ADDRESS

Adresse: _____

CITY

Ville: _____

STATE

Province: _____

POSTAL CODE

Code postal: _____

DATE OF INSTALLATION

DATE DE INSTALLATION: _____

SERIAL NUMBER

Numéro de Série: _____

