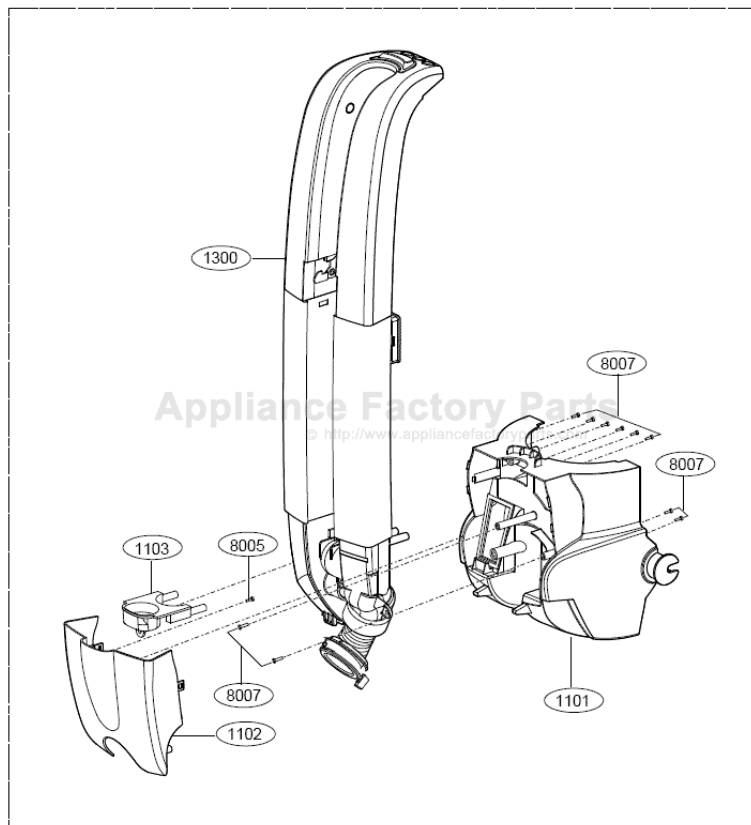


This Owner's Manual is provided and hosted by [Appliance Factory Parts](http://www.appliancefactoryparts.com).



# Kenmore 721.37060700 Owner's Manual

[Shop genuine replacement parts for Kenmore  
721.37060700](#)



[Find Your Kenmore Vacuum Cleaner Parts - Select From 745 Models](#)

----- Manual continues below -----



MODEL 721.37060700

**DIVISION 20**

**BASIC FIELD MANUAL  
FOR  
UPRIGHT VACUUM CLEANER**

**MODEL 721.37060700**

**July , 2007**

---

BEFORE SERVICING THE UNIT, READ THE “SAFETY PRECAUTIONS” IN THIS MANUAL.

**MODEL 721.37060700**  
**MECHANICAL SERVICE INFORMATION**

## TABLE OF CONTENTS

1. SAFETY PRECAUTION .....	3
2. DESCRIPTION / SPECIFICATIONS .....	4
3. DISPLAY LED .....	5
4. DISASSEMBLY .....	6 - 14
5. MAINTENANCE AND CARE .....	15
6. SCHEMATIC DIAGRAM .....	16
7. TROUBLE SHOOTING .....	17
8. EXPLODED VIEW .....	18-27

## BEFORE OPERATING VACUUM CLEANER, READ THIS SERVICE MANUAL THOROUGHLY, AND OBSERVE EACH POINT CAREFULLY.

### 1. Pre Filter (Motor Safety Filter)

- 1) This filter is reusable.
- 2) Never use the vacuum cleaner without filter.  
It may damage the motor.
- 3) For optimal performance, wash the Pre filter at least once 6 months.

#### **NOTE :** Reusing of the motor filter.

- Never wash the filter in a washing machine or in a dishwasher.
- Never use hot water for washing the filter.
- Reuse the filter after drying it completely in the shade for a day.
- Do not dry near fire or direct sunray.

### 2. Exhaust filter

- 1) This filter is HEPA filter.
- 2) For clean air, this filter must be assembled.
- 3) For optimal performance ,replace the exhaust filter at least once a year.

### 3. Avoid suction such materials as :

- 1) Liquid or wet dust :  
Clogs the ventilation holes, reduces the suction power significantly and harms the motor.
- 2) Inflammable liquids such as benzene, alcohol or solvents.
- 3) Burning objects such as cigarette butts.
- 4) Bulky objects such as vinyl, paper etc.
- 5) Sharp objects such as needles, pins, metal,glass particles etc.

### 4. Attachments

- 1) Crevice Tool:  
: for cleaning any crevice, inside corners or window frames. However, do not use the crevice tool more than 20 minutes because it may cause harm to the motor.
- 2) Dusting / Upholstery Tool  
: for cleaning clothes curtains and cleaning stair.
- 3) Pet Handi Mate  
: for cleaning the bare floor and carpet on the stair.

**5. Close supervision is necessary when this vacuum cleaner is used by or near children.  
Children's carelessness may cause damage to the cleaner or injure persons.**

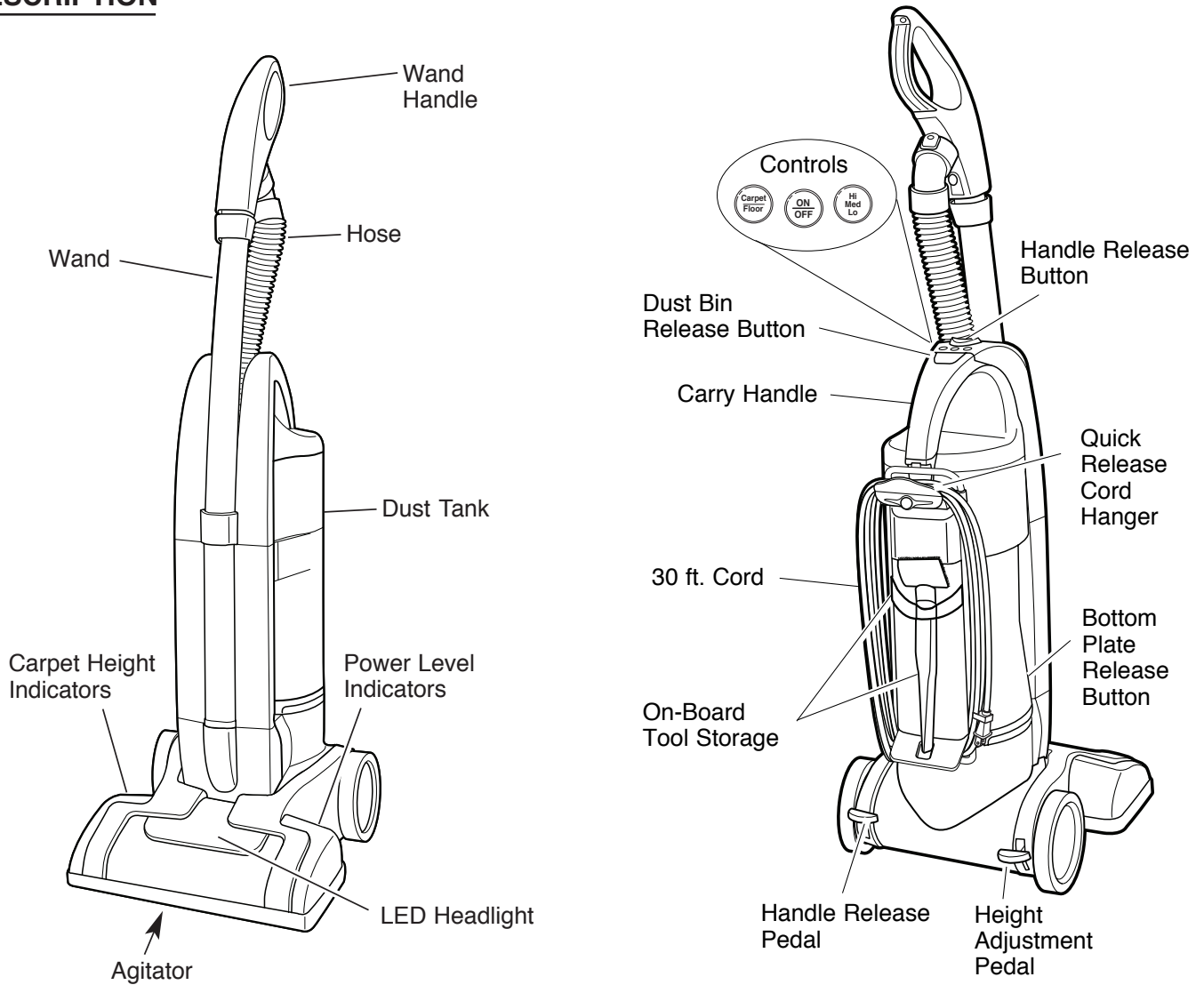
**6. Air exhausted from the vacuum cleaner is normally warm. But if extraordinarily hot air is exhausted, check if the hose, pre & exhaust filter is clogged or not.**

**7. Electric shock could occur if used outdoors or on wet surfaces.**

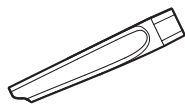
## 2. DESCRIPTION / SPECIFICATIONS

MODEL 721.37060700

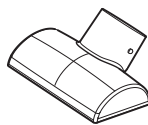
### DESCRIPTION



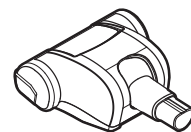
### ATTACHMENTS



Crevice Tool



Dusting / Upholstery Tool



Pet Handi Mate

### SPECIFICATIONS

AMP : 12A

VOLTS : 120V

HERTZ : 60Hz

CORD LENGTH : 30 ft

HOSE LENGTH : 7 ft

WEIGHT : 15.23lb

DUST BIN CAPACITY : 2.2L

CLEANING WIDTH : 13.5 in□

POWER CONTROL : MAIN - PUSH ON/OFF (BODY)

CARPET HEIGHT SELECTOR :  
PUSH THE LEVER SELECTOR (HEAD)

AGITATOR ON /OFF :  
PUSH CARPET/FLOOR (BODY)

### 3. DISPLAY LED

MODEL 721.37060700

#### POWER ON/OFF

1. Plug the power cord into a proper outlet.
2. Press the **ON/OFF** button.  
The Power indicator will light and the main motor will run.

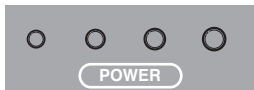


#### POWER LEVEL SELECTOR

1. Press the power button to select the power level. Pressing the button repeatedly will cycle through the power levels.

#### Recommended settings:

- Lo:** drapes, hard surfaces
- Med:** furniture, upholstery, area rugs
- Hi:** shag carpet, long pile, etc.



#### AGITATOR ON/OFF

4. For bare floors, press the **Carpet/Floor** button to turn off the agitator.



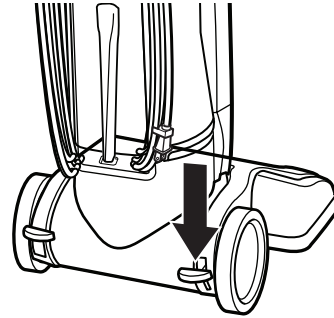
**NOTE:** The agitator will not run with the handle in the upright position.

**When vacuuming, if the agitator is not running at full speed** due to an obstruction, in the agitator area, the agitator "ON/OFF" LED will begin a series of three flashes followed by a pause.

**To correct problem:** Turn off and unplug vacuum cleaner, then remove obstruction from agitator.

#### ADJUSTING THE PILE HEIGHT

Press the right foot pedal to adjust the pile height. Each press will lower or raise the agitator one notch.  
The LED indicator will light for each setting to show what is selected.



#### Suggested pile height settings:

You may need to raise the height to make some jobs easier, such as vacuuming scatter rugs and longer pile rugs.

#### Recommended settings:

- XLO** very low pile, bare floors
- L** short to medium pile
- M** medium to long pile
- H** shag carpet, long pile, scatter rugs



**Attention:** Special care is required when vacuuming certain types of carpet or flooring. Always check the carpet or floor covering manufacturer's recommended cleaning instructions before vacuuming.

## 4. DISASSEMBLY

MODEL 721.37060700

**NOTE:** Before attempting to service or adjust any part of the vacuum cleaner, disconnect the electrical power supply cord from the wall outlet.

Almost all of the parts of this vacuum cleaner can be disassembled with a screw driver and each connecting component easily fits together.

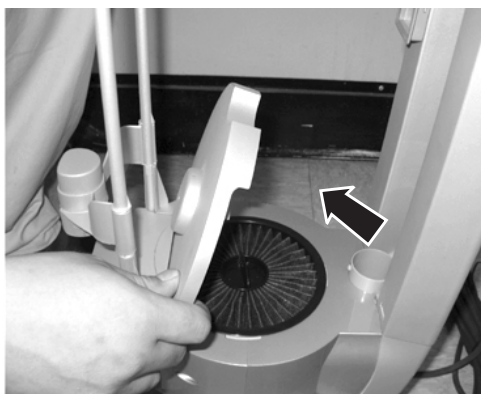
- Disassemble one by one referring to the exploded view.
- If possible, do not disassemble except for the necessary parts. It is not necessary to disassemble the parts that are not detailed in the exploded view.

### 1. Head Assembly Replacement

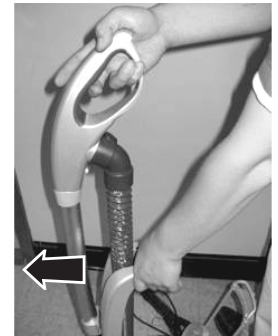
- 1) Remove the dust bin as shown below.



- 2) Raise the HEPA Filter cover.



- 3) Press the wand release button on the carry handle and tilt the wand handle forward. Lift the wand out and up.



- 4) Remove the hose as shown below.



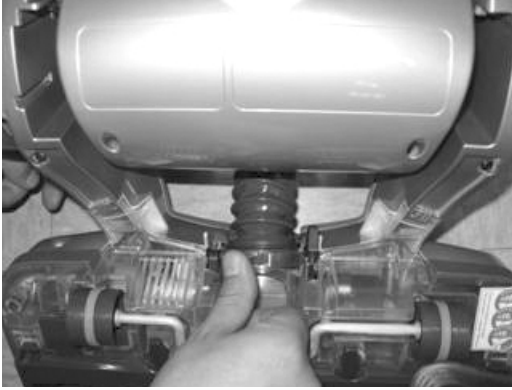
- 5) Remove the hose through the body at the location shown.



## 4. DISASSEMBLY

MODEL 721.37060700

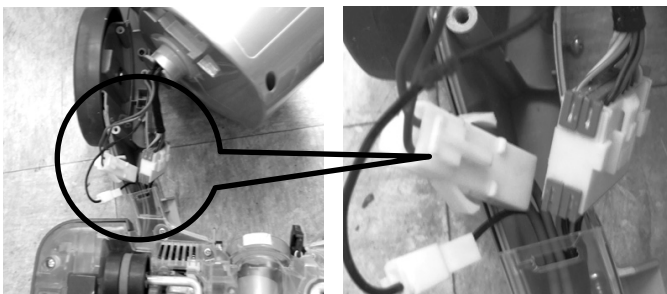
- 6) Press the left foot pedal and turn vacuum cleaner over, push the latch on the Head to the right and then the hose can be removed.



- 7) Remove the 4 screws on each side fastening the Body and Head and then remove the 2 plate covers.



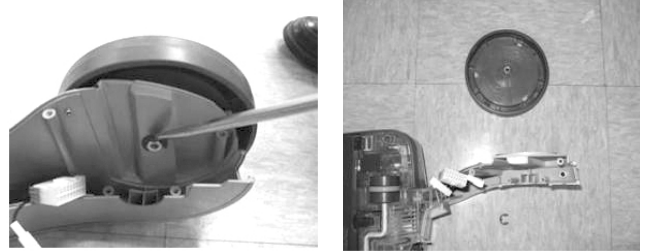
- 8) Remove the Head Assembly by removing the three connectors as shown below.



- 9) To reinstall the Head Assembly reverse the steps above.

## 2. Wheel Assembly replacement

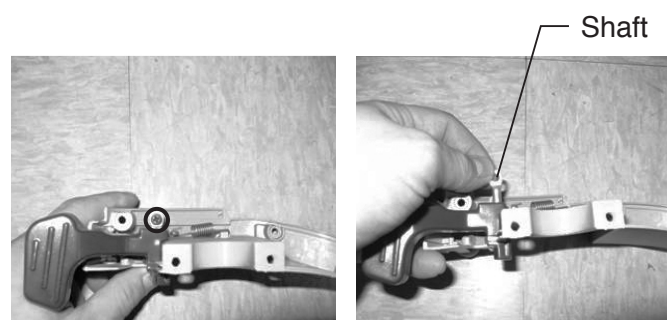
- 1) Remove the C clip by using a straight screwdriver and remove Wheel Assembly.



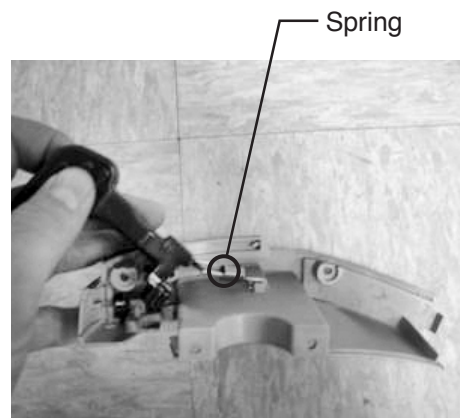
- 2) To reinstall the Wheel Assembly reverse the steps above.

## 3. Lever Release replacement.

- 1) Remove the 1 screw and pull the shaft.



- 2) Lift lever from holder and release spring.



- 3) To reinstall the Lever Release reverse the steps above.

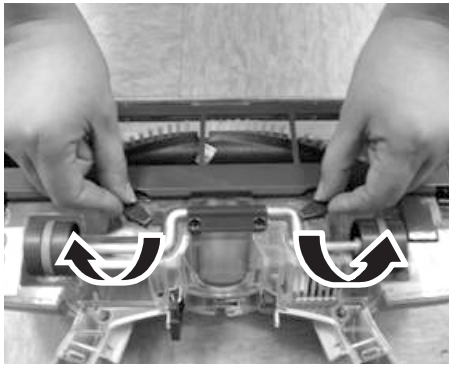


## 4. DISASSEMBLY

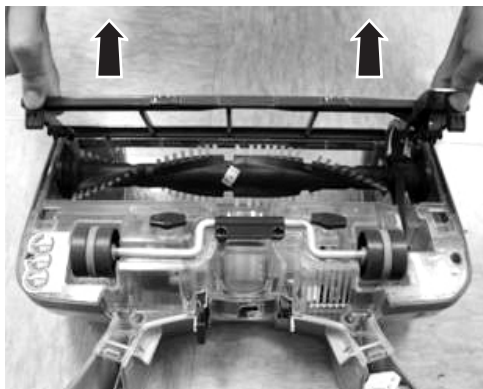
MODEL 721.37060700

### 4. Head Cover replacement.

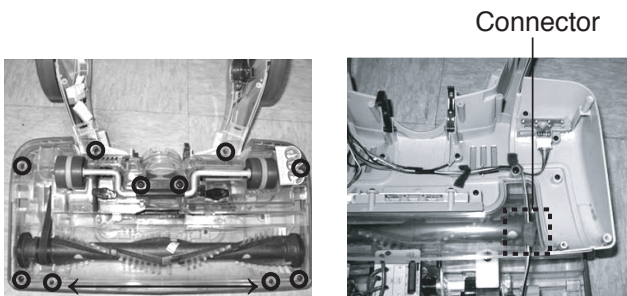
- 1) Rotate the two cover retainers to unlock the agitator cover.



- 2) Press in on the two tabs and rotate the agitator cover up and off.



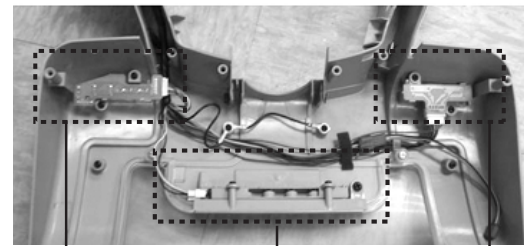
- 3) Remove the 10 screws and disconnect receptacle with 3 pins and then disassemble the Head Cover Assembly.



**Note : Placement of small screws 3 x 8.**

- 4) To reinstall the Head Cover reverse the steps above.

### 5. PCB ASSEMBLY DISPLAY REPLACEMENT



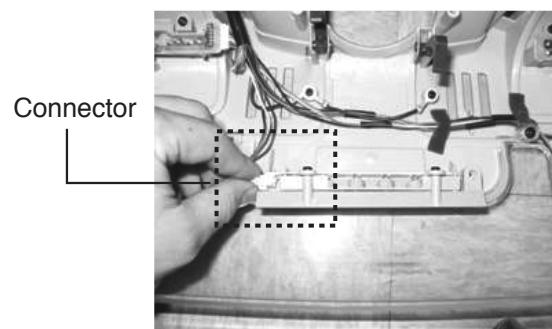
Power LED PCB Assembly

Height Adjustment LED PCB Assembly

LED PCB Assembly

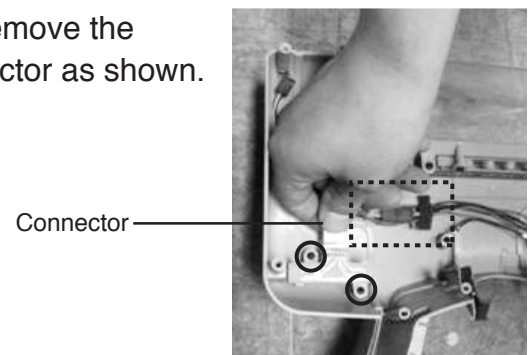
#### 1> LED PCB Assembly Display replacement.

- 1) Remove the 1 screw and remove the connector as shown.



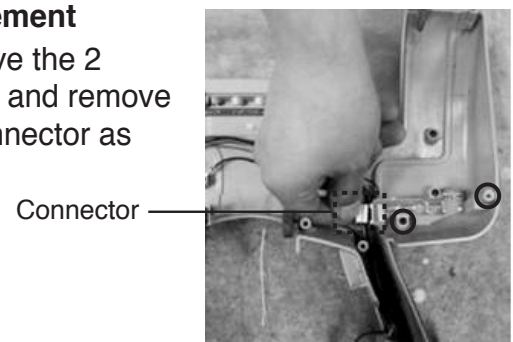
#### 2> Power PCB Assembly Display replacement

- 1) Remove the 2 screws and remove the connector as shown.



#### 3> Height Adjustment PCB Assembly Display replacement

- 1) Remove the 2 screws and remove the connector as shown.

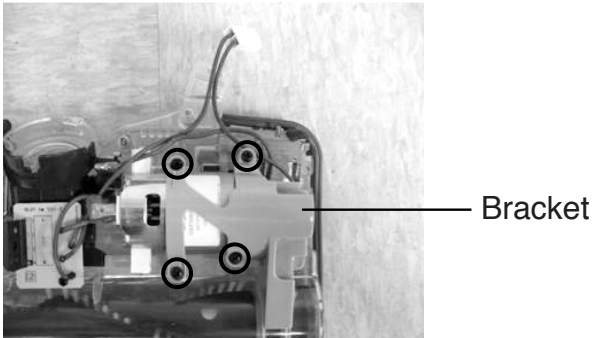


## 4. DISASSEMBLY

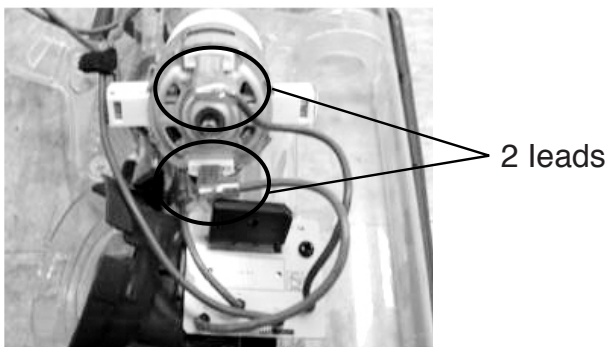
MODEL 721.37060700

### 6. Agitator Motor replacement

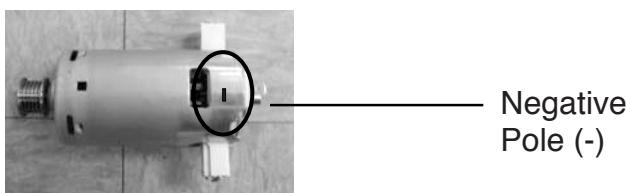
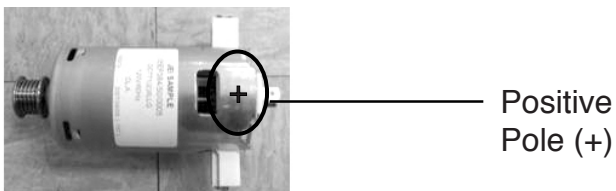
- 1) Remove the agitator and belt as shown on page 15.
- 2) Remove the 4 screws and pull out the Bracket.



- 3) Disconnect the 2 leads and remove the motor.



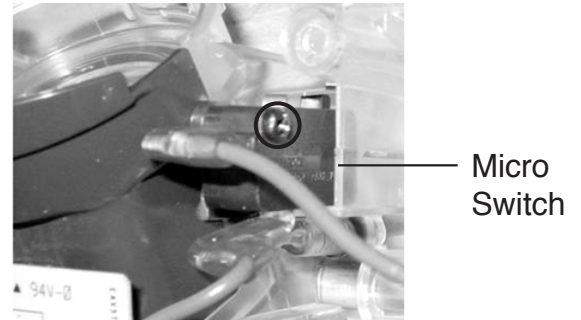
**Note :** This motor is marked '+' on one side and '-' on the other side. Be sure to connect properly. The wire color of '+' is brown and '-' is blue.



- 4) To reinstall the Agitator Motor reverse the steps above.

### 7. Micro Switch replacement

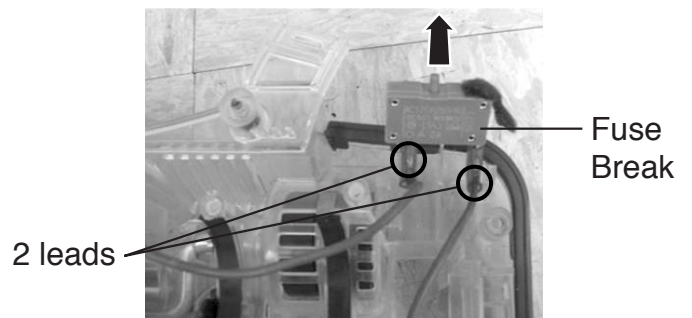
- 1) Remove the 1 screw and disconnect the 2 leads and remove the Micro Switch.



- 2) To reinstall the Micro Switch reverse the steps above.

### 8. Fuse Break replacement

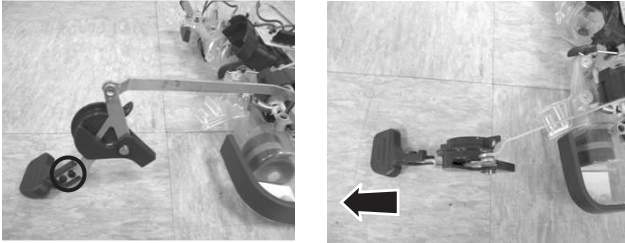
- 1) Lift the Fuse Break to the direction shown and disconnect the 2 leads and then remove the Fuse Break.



- 2) To reinstall the Fuse Break reverse the steps above.

## 9. Lever Selector Replacement

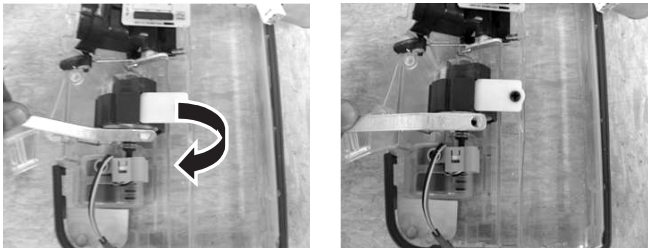
- 1) Remove the 2 screws and remove the Lever Selector to this direction shown.



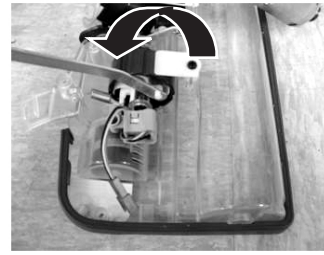
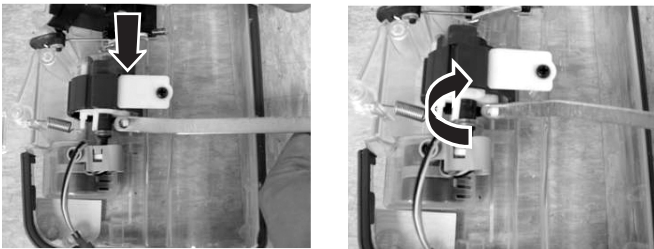
- 2) To reinstall the Lever Selector reverse the steps above.

## 10 . Selector Assembly replacement.

- 1) To remove, angle up then twist off.



- 2) When reinstalling , angle down and twist on.



## 11. Motor Replacement

- 1) Open the HEPA Filter cover and turn the Exhaust filter counterclockwise and lift it up.



- 2) Remove the 4 screws on the Body Base Assembly and remove the Body Base Assembly.

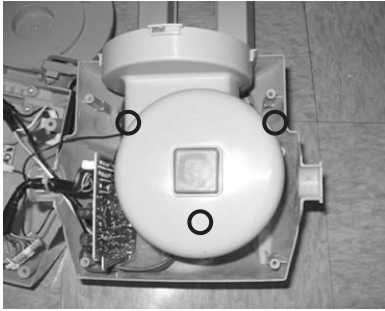


**NOTE : Do not lift the Body Base Assembly too hard, the leads and connector are still connected.**

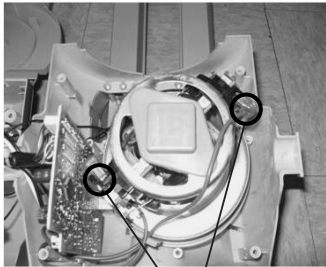
## 4. DISASSEMBLY

MODEL 721.37060700

- 3) Remove the 3 screws on the Housing Motor and remove it.



- 4) Disconnect 2 lead wires and remove the mount packing and seal packing.



2 leads

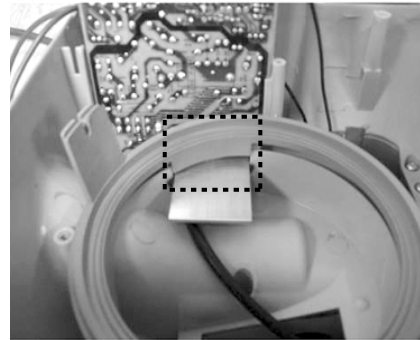


Mount packing

Seal packing

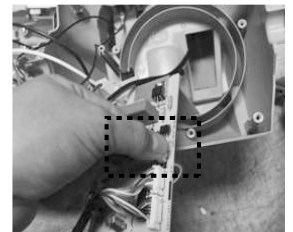
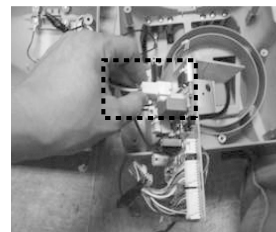
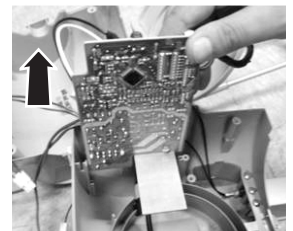
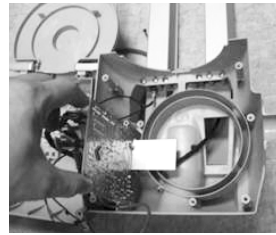
- 5) To reinstall the Motor reverse the steps above.

**NOTE : Make sure that the mount packing should be located in the correct position as shown when assembling**



## 12. PCB Assembly replacement

- 1) Lift the PCB Assembly up and disconnect 2 connectors.

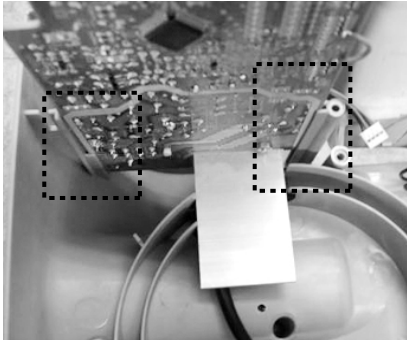


- 2) To reinstall the PCB Assembly reverse the steps above.

## 4. DISASSEMBLY

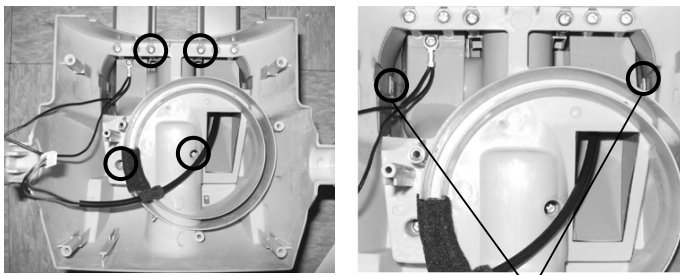
MODEL 721.37060700

**NOTE :** Make sure that the PCB Assembly should be located in the correct position as shown below when assembling



### 13. Top Cover Assembly Replacement

1) Remove the 4 screws and remove the 2 hooks by using a straight screwdriver.



2 Hooks

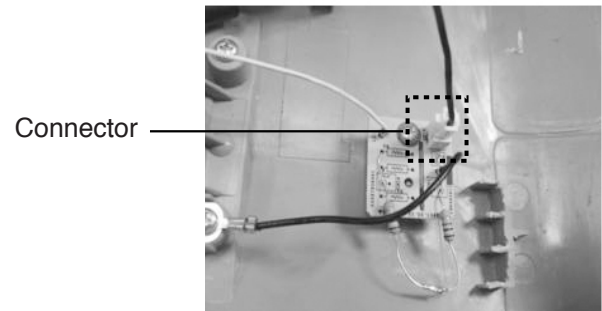
2) Remove the 7 screws and remove the Top Cover Assembly.



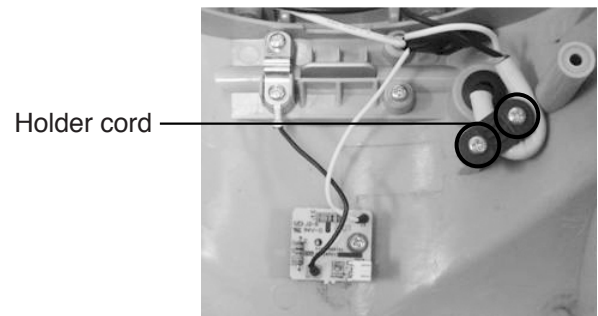
3) To reinstall the Top cover Assembly reverse the steps above.

### 14. Power Cord replacement

1) Disconnect the connector.



2) Remove the 2 screws and the holder cord.



3) Cut the end of the Power Cord as shown and take the power cord off through the Cord Bushing as shown.



4) Replace the new Power Cord and connect the wire by Nylon Connector.



## 4. DISASSEMBLY

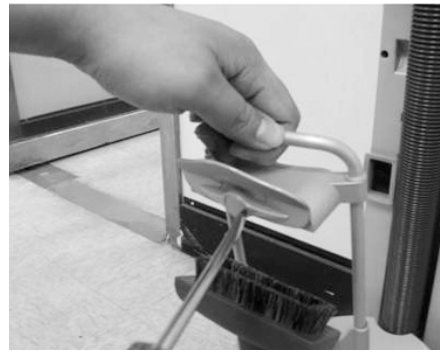
MODEL 721.37060700

### 15. HEPA Filter Cover replacement

1) Remove the dust bin as shown below.



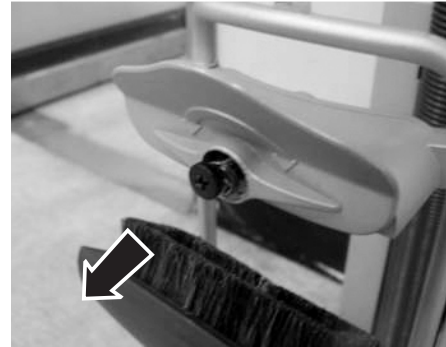
2) Remove the Cap by using a straight screwdriver.



2) Remove the HEPA filter cover by using a straight screwdriver as shown.



3) Remove the 1 screw and spring and replace the new Cord Hanger and Cap.



3) To reinstall the HEPA Filter cover reverse the steps above.

4) To reinstall the Cord hanger reverse the steps above.

### 16. Cord Hanger replacement

1) Remove the dust bin as shown below.



### 17. Holder Accessory replacement

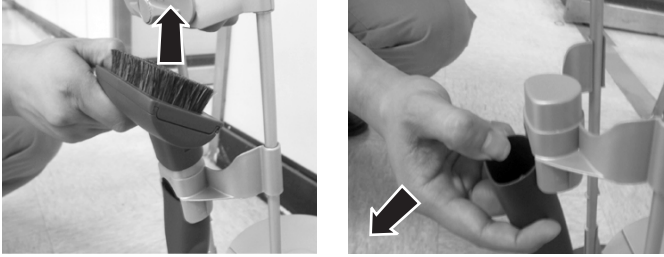
1) Remove the dust bin as shown below.



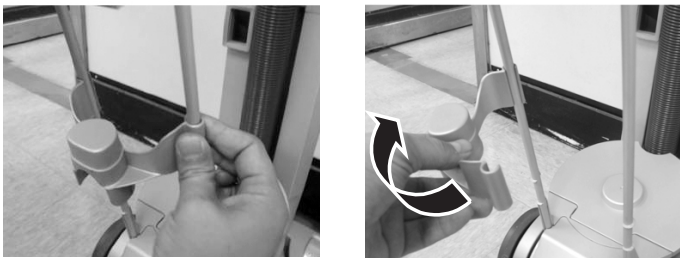
## 4. DISASSEMBLY

MODEL 721.37060700

2) Remove the Crevice tool and D / Brush.



3) Remove the Holder Accessory as shown.



4) To reinstall the Holder Accessory reverse the steps above.

### 18.Handle Assembly replacement

1) Make sure the vacuum cleaner is locked in the upright position and on a flat, stable surface.

2) Press the wand release button on the carry handle and tilt the wand handle forward.



3) Lift the wand out and up.

4) Press the release button on the bottom of the handle and pull the Pipe Assembly straight out of the handle.



5) Remove the hose assembly by pressing the two release button on the Hose connector.



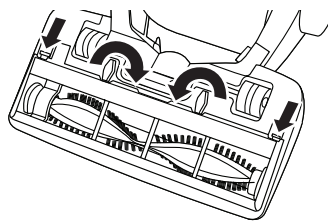
6) To reinstall the Handle Assembly reverse the steps above.

## IMPORTANT :

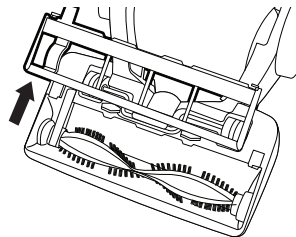
- Always unplug the power cord from electrical outlet before performing any service on vacuum cleaner.
- Frequently check the agitator brush area for hair, string, and lint buildup. If buildup becomes excessive, use the following procedure to remove buildup and clogs.

### 1. Remove the Agitator Brush

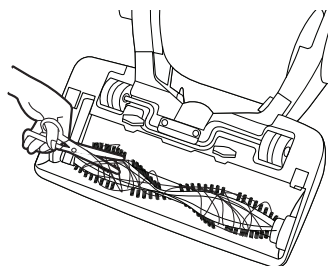
- 1) Unplug the vacuum cleaner. Press the left foot pedal to release the handle. Lower the handle until the vacuum cleaner is lying flat on the floor.
- 2) Turn the vacuum cleaner over, so that the agitator is facing up.
- 3) Rotate the two cover retainers to unlock the agitator cover.



- 4) Press in on the two tabs and rotate the agitator cover up and off.



- 5) Carefully remove any accumulated string, hair, etc. from the agitator and the agitator area.



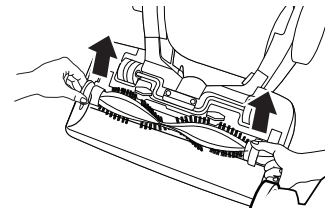
To reinstall the cover, hook the front edge of the cover into place, rotate it down until the tabs clip into place, then turn the retainers to the locked position.

## IMPORTANT :

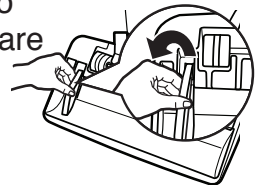
- Always unplug the power cord from electrical outlet before performing any service on vacuum cleaner.
- Frequently check the agitator brush area for hair, string, and lint buildup. If buildup becomes excessive, use the following procedure to remove buildup and clogs.

### 2. Replace the Agitator Belt.

- 1) To replace the Agitator Belt, you must remove the Agitator.
- 2) Lift the agitator straight out.



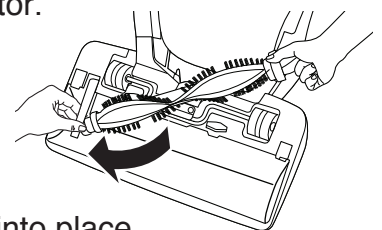
- 3) Unhook the old belt from the drive pulley. Make sure no pieces of the broken belt are trapped in the agitator or drive pulley area.



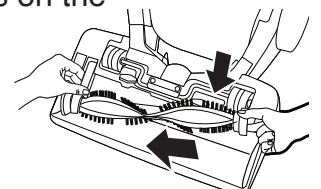
- 4) Hook the new belt over drive pulley.



- 5) Fit the belt end of the agitator through the belt, making sure the belt is aligned with the pulley section of the agitator.



- 6) Lower the agitator into place, making sure the oval shaped tabs fit into the indents on the vacuum cleaner.

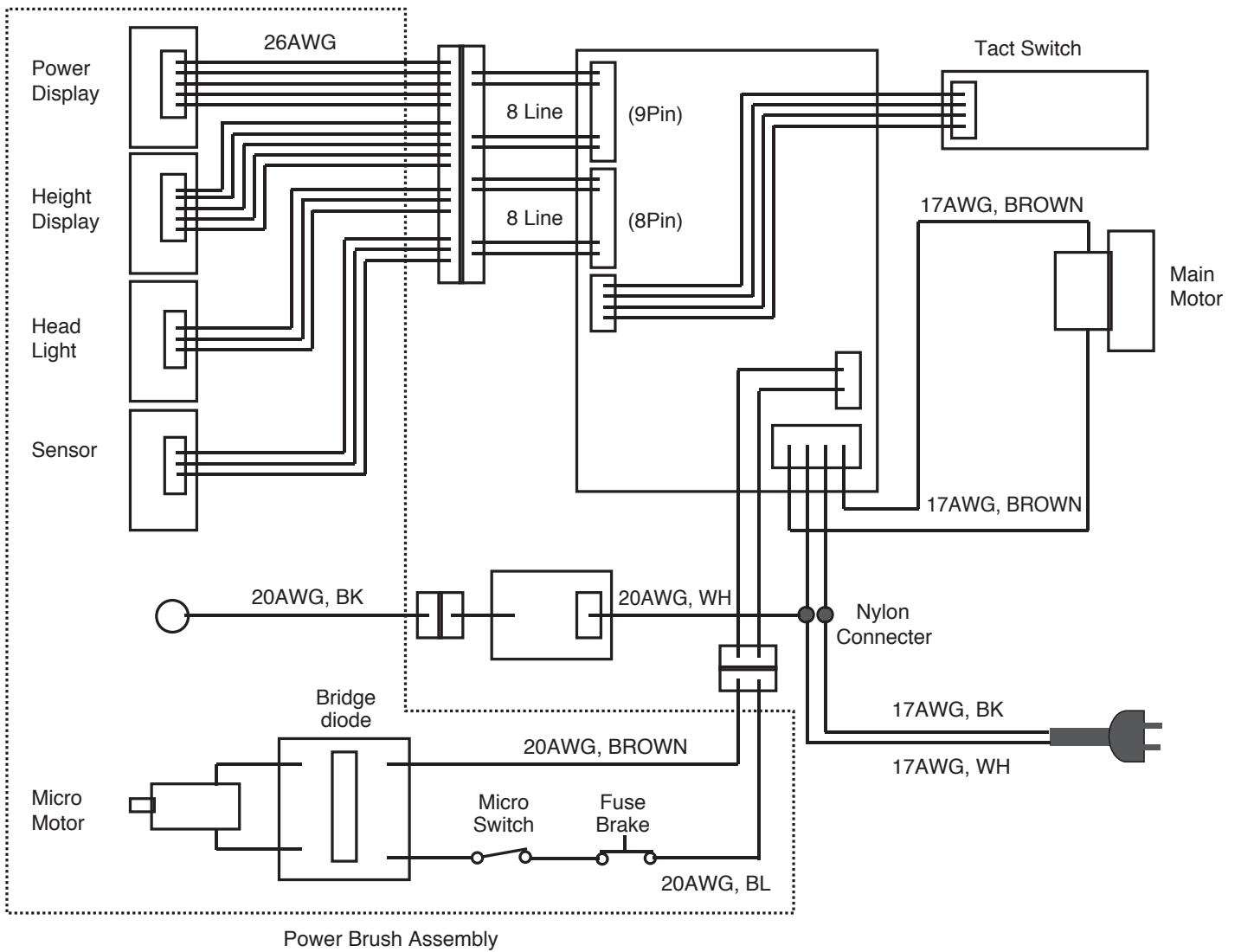


- 7) Reinstall the agitator brush as described above.



# 6. SCHEMATIC DIAGRAM

MODEL 721.37060700



## TROUBLESHOOTING

Review this chart to find do-it-yourself solutions for minor performance problems.

Any service or repair needed, other than as described in this Use & Care Guide, should be performed through your local Sears Parts & Repair Center

### WARNING

**Electrical shock and personal injury hazard.**

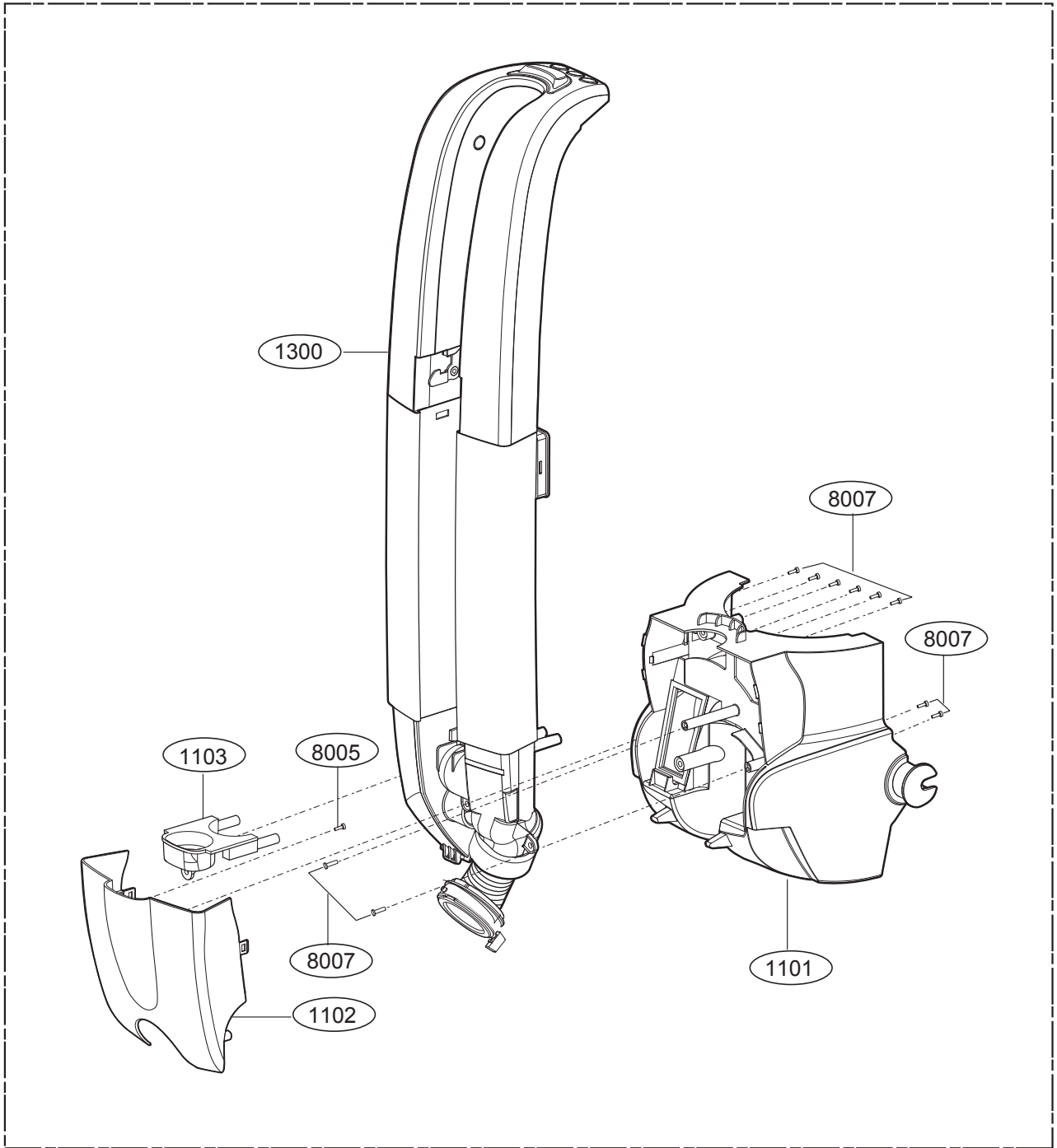
**Always unplug power cord from electrical outlet before performing any service on vacuum cleaner.**

**Failure to do so could result in electrical shock or personal injury from vacuum cleaner suddenly starting.**

PROBLEM	POSSIBLE CAUSE	POSSIBLE SOLUTION
<b>Vacuum cleaner will not run</b>	<ul style="list-style-type: none"> <li>• Unplugged at wall outlet</li> <li>• Switch off</li> <li>• Thermal overload protection activated</li> </ul>	<ul style="list-style-type: none"> <li>• Make sure cord is plugged into a functioning outlet</li> <li>• Turn power switch ON</li> <li>• Allow the vacuum cleaner to cool down. See page 14</li> </ul>
<b>Agitator does not turn</b>	<ul style="list-style-type: none"> <li>• Switch is off (unit is in bare floor mode)</li> <li>• Cleaner is in upright position (safety feature)</li> <li>• Overload protector activated (brush is jammed)</li> <li>• Belt broken</li> </ul>	<ul style="list-style-type: none"> <li>• Press the Carpet/Bare Floor button</li> <li>• Press handle release pedal and tilt unit back</li> <li>• Unplug the vacuum cleaner and check the agitator for obstructions. Press reset button</li> <li>• Replace belt. See page 19</li> </ul>
<b>Agitator "ON/OFF" LED Flashing</b>	<ul style="list-style-type: none"> <li>• Obstruction in agitator</li> </ul>	<ul style="list-style-type: none"> <li>• Turn off and unplug vacuum cleaner, then check the agitator for obstructions</li> </ul>
<b>Dust escapes the dust bin</b>	<ul style="list-style-type: none"> <li>• Dust bin improperly installed</li> <li>• Dust bin lid not fully closed</li> <li>• Dust bin bottom is not latched</li> </ul>	<ul style="list-style-type: none"> <li>• Make sure all dust bin components and filters are installed correctly</li> <li>• Check dust bin lid</li> <li>• Make sure dust bin bottom is closed and latched</li> </ul>
<b>Poor dirt pickup</b>	<ul style="list-style-type: none"> <li>• Full or clogged dust bin</li> <li>• Dust bin improperly installed</li> <li>• Wand not installed properly</li> <li>• Clogged hose or nozzle</li> <li>• Belt broken/not installed properly</li> <li>• Thermal protector activated</li> <li>• Agitator overload protector activated</li> <li>• Hole in hose</li> <li>• Worn agitator</li> </ul>	<ul style="list-style-type: none"> <li>• Empty dust bin and clean filters</li> <li>• Make sure all dust bin components and filters are installed correctly</li> <li>• Make sure the wand is installed correctly</li> <li>• Check for clogs. See page 20</li> <li>• Check belt, and replace if needed. See page 19</li> <li>• Allow the vacuum cleaner to cool down. See page 14</li> <li>• Unplug the vacuum cleaner and check the agitator for obstructions. Press the reset button</li> <li>• Inspect hose carefully. Replace if needed</li> <li>• Contact service</li> </ul>
<b>Cleaner picks up moveable rugs or is hard to push</b>	<ul style="list-style-type: none"> <li>• Wrong nozzle height setting</li> <li>• Use lower power level (on light-weight moveable rugs)</li> </ul>	<ul style="list-style-type: none"> <li>• Adjust nozzle height</li> <li>• Reduce the power level</li> </ul>
<b>Brush on Pet Handi Mate® will not run when attached</b>	<ul style="list-style-type: none"> <li>• Dirty brush or brush roll</li> <li>• Obstruction in turbine air path</li> <li>• Low suction from vacuum cleaner</li> </ul>	<ul style="list-style-type: none"> <li>• Clean the inside of the Pet Handi Mate®. See page 18</li> <li>• Clean the inside of the Pet Handi Mate®. See page 18</li> <li>• Check for clogs. See page 20</li> <li>• Check for dirty filters on vacuum cleaner. See pages 15-17</li> </ul>
<b>Vacuum has unusual odor</b>	<ul style="list-style-type: none"> <li>• New machine, needs break-in time.</li> </ul>	<ul style="list-style-type: none"> <li>• Vacuum needs run time possibly as long as 3 hours.</li> </ul>

# 7. REPLACEMENT PART LIST

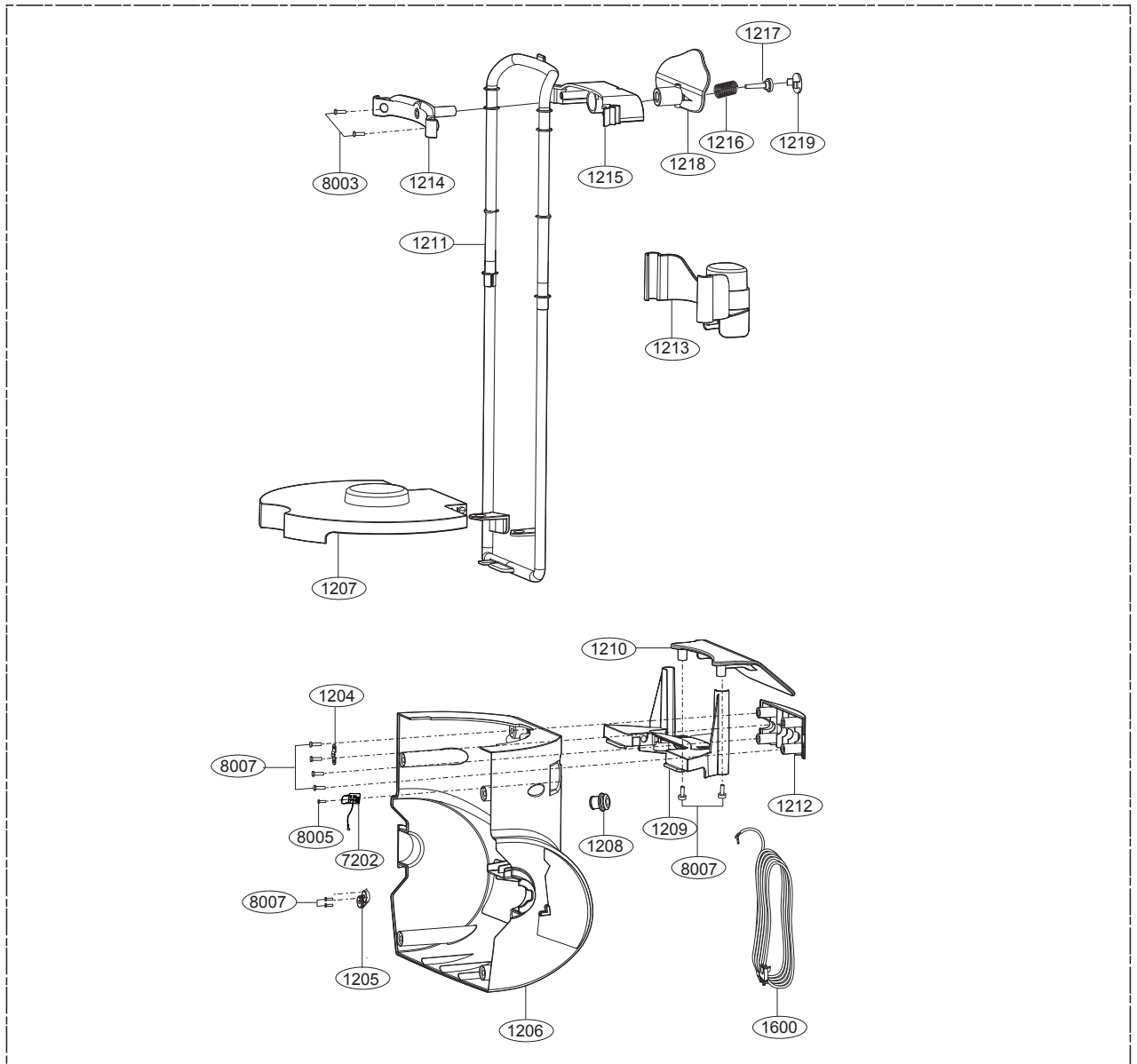
MODEL 721.37060700



LOCATION NO.	PART NO.	DESCRIPTION	QUANTITY
1101	MCK37609001	Cover,Body	1
1102□	MCK37610101	Cover Front	1
1103	AGR35999101	Pipe Assembly	1
1300	ACQ34949401	Top Cover Assembly	1
8005	FAB00631101	Screw,Tapping(Φ4,L8)	1
8007	FAB30147901	Screw,Tapping(Φ4,L12)	10

# 8. EXPLODED VIEW

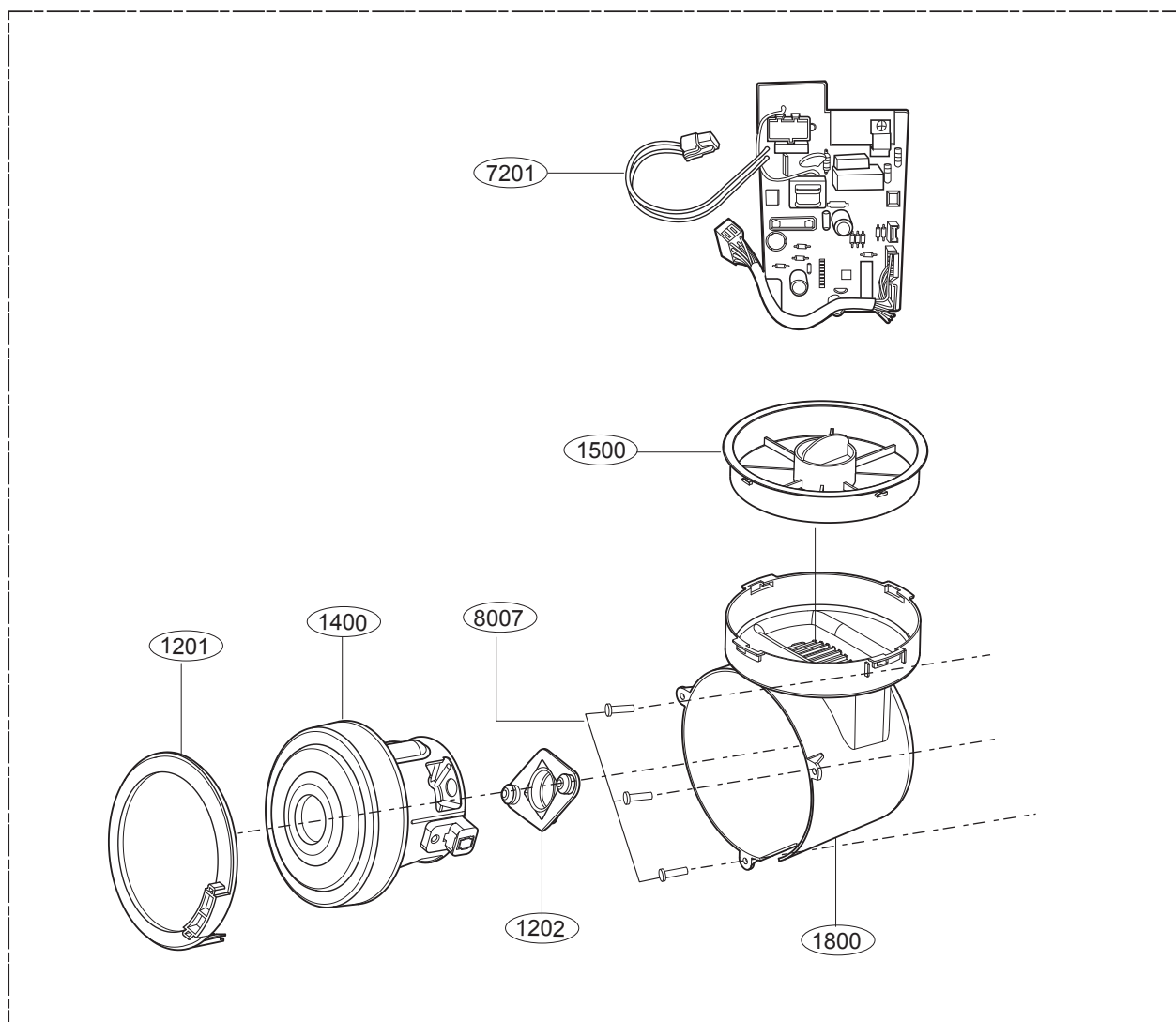
MODEL 721.37060700



LOCATION NO.	PART NO.	DESCRIPTION	QUANTITY
1204	MFG37809701	Locker	1
1205	4930FI4669A	Holder,Cord	1
1206	MAM37608401	Base,Body	1
1207	MGJ37608501	Plate,Supporter	1
1208	4830FI3002C	Bush,Cord	1
1209	MJH37809001	Supporter,Wire	1
1210	MEC37608901	Hanger,Cord	1
1211	MDQ37809101	Frame,Wire	1
1212	MCK37809401	Cover,Rear	1
1213	MEG37630601	Holder,Accessory	1
1214	MEG37608701	Holder,Fixing	1
1215	MJH37608601	Supporter,Holder	1
1216	MHY38963201	Spring,Coil	1
1217	4932FI4190B	Connector,Lever	1
1218	MEC37608801	Hanger,Cord	1
1219	MBL38460501	Cap,Screw	1
1600	6411FI2422U	Power Cord	1
7202	EBR38381101	PCB	1
8003	FAB00610201	Screw,Tapping(Φ 3,L10)	2
8005	FAB00631101	Screw,Tapping(Φ 4,L8)	1
8007	FAB30147901	Screw,Tapping(Φ 4,L12)	8

## 8. EXPLODED VIEW

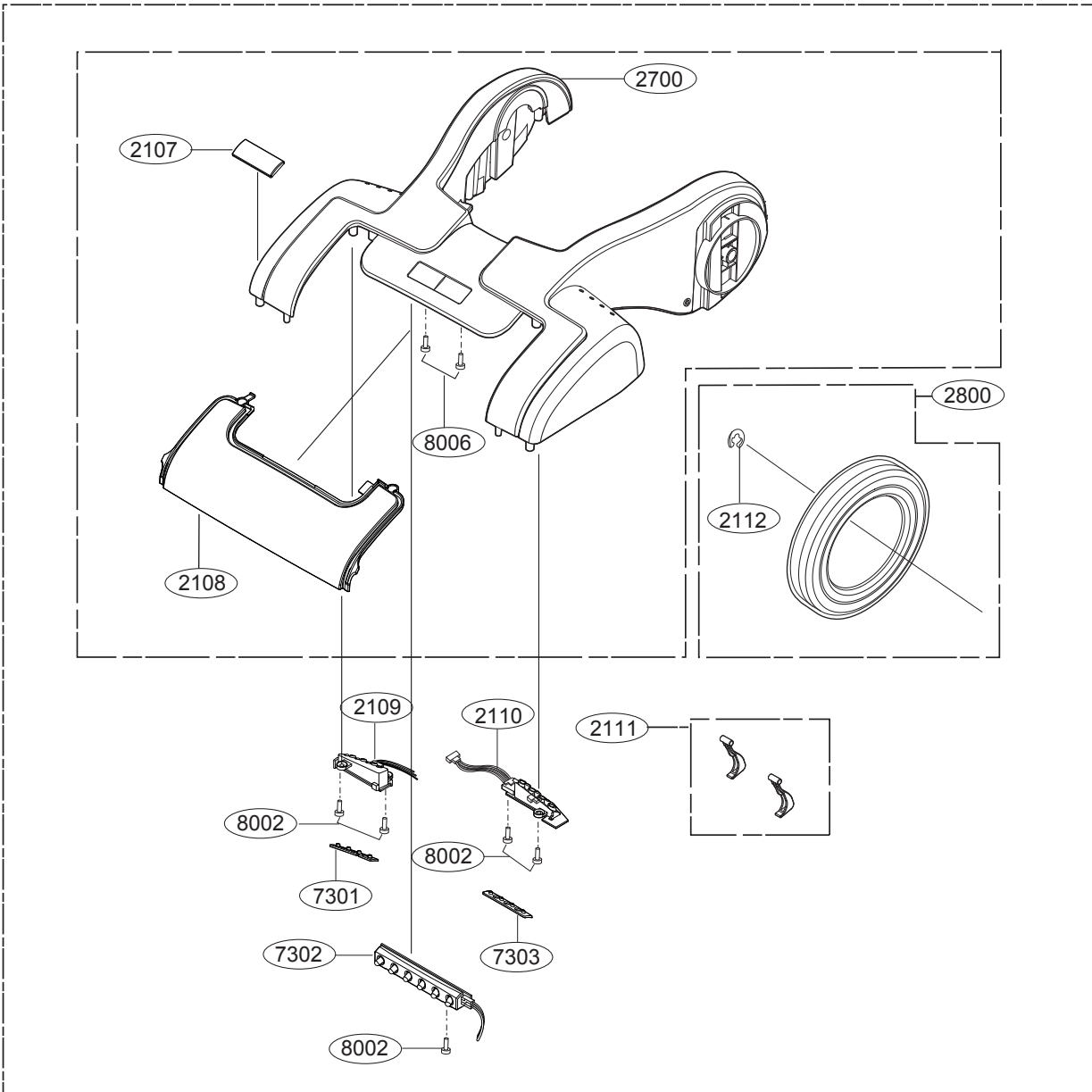
MODEL 721.37060700



LOCATION NO.	PART NO.	DESCRIPTION	QUANTITY
1201	MCQ37627601	Damper, mount packing	1
1202	MFZ37627901	Packing	1
1800	ANE32945301	Housing Assembly, motor	1
1400	EAU36637101	AC MOTOR Assembly	1
1500	ADQ33064201	Filter Assembly, exhaust	1
7201	EBR36636101	PCB Assembly	1
8007	FAB30147901	Screw, Tapping(Φ 4,L12)	3

# 8. EXPLODED VIEW

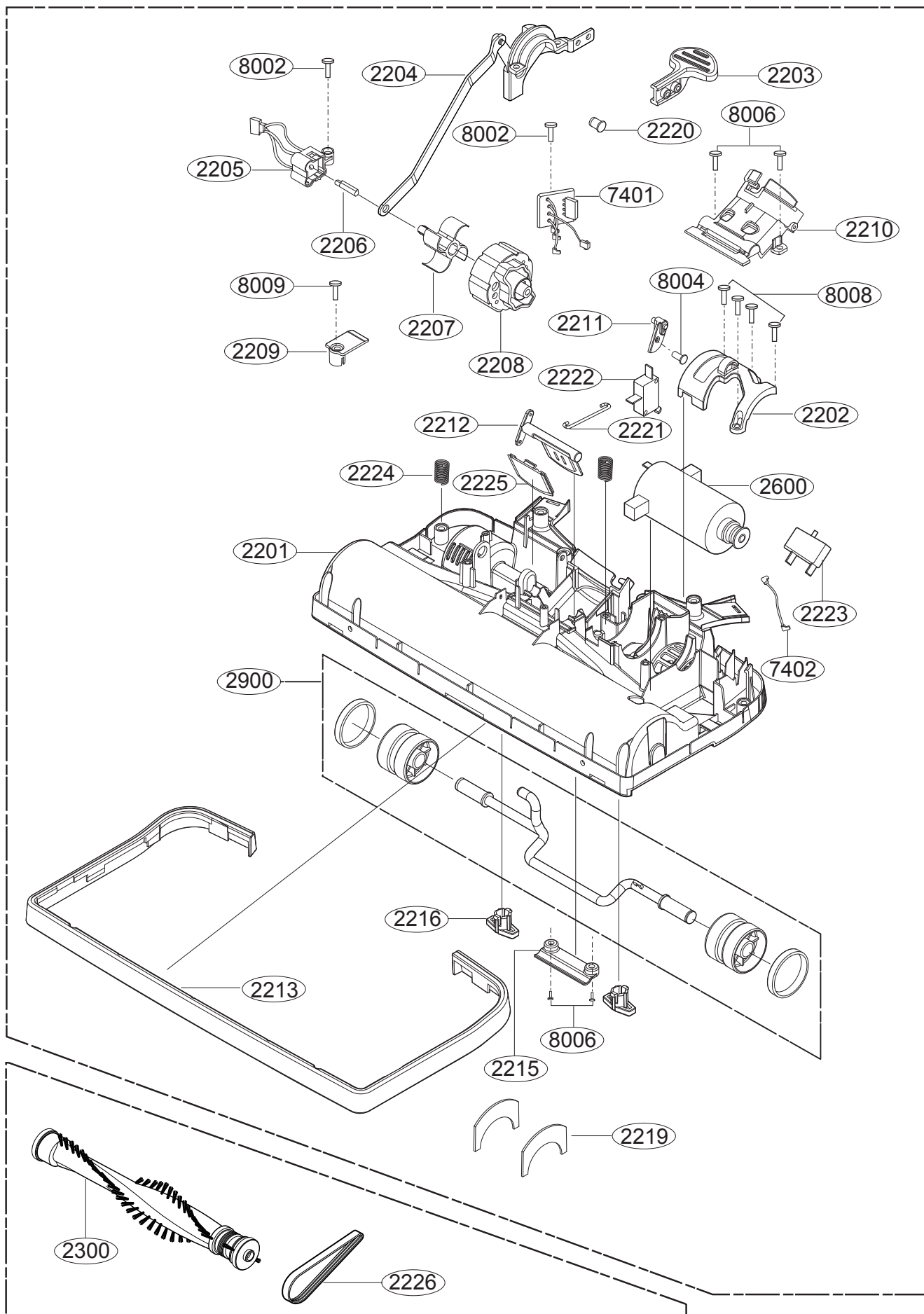
MODEL 721.37060700



LOCATION NO.	PART NO.	DESCRIPTION	QUANTITY
2107	MGJ38973401	Plate	1
2108	MKC37387601	Window,Viewing	1
2109	MCK37387201	Cover,Display	1
2110	MCK37387401	Cover,Display	1
2111	MBG37846401	Button,control	2
2112	MGZ00027801	Ring,E(Φ 5)	2
2700	ACQ35072101	Cover Assembly,Head	1
2800	AJW35084801	Wheel Assembly	2
7301	EBR37490201	PCB Assembly,Display	1
7302	EBR37489901	PCB Assembly,Display	1
7303	EBR37490101	PCB Assembly,Display	1
8002	FAB00610801	Screw,Tapping (Φ 3,L8)	5
8006	FAB00605501	Screw,Tapping (Φ 4,L10)	2

# 8. EXPLODED VIEW

MODEL 721.37060700



## 8. EXPLODED VIEW

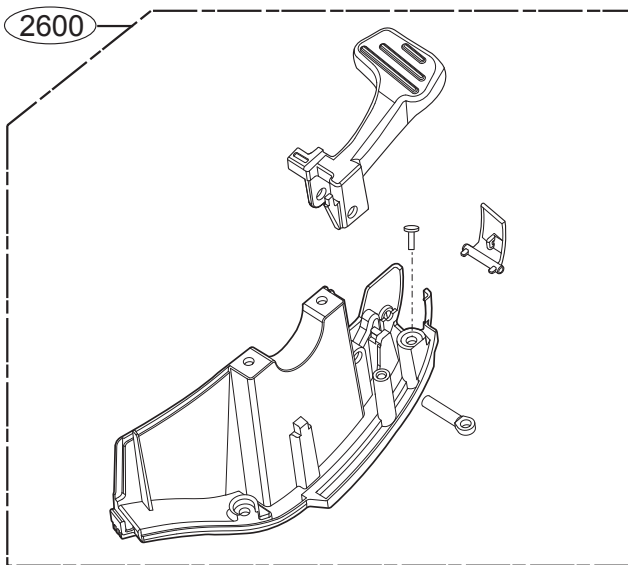
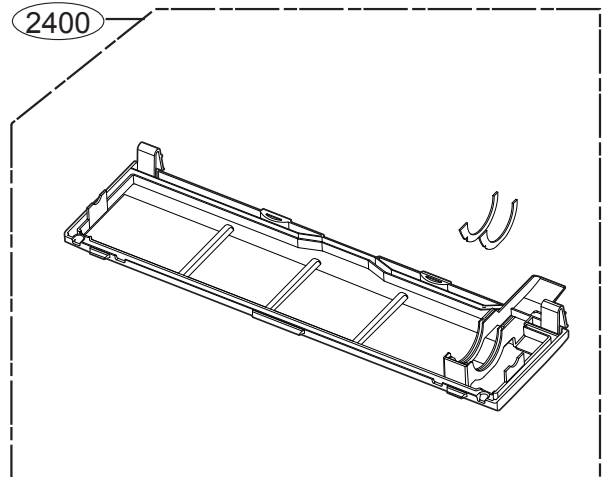
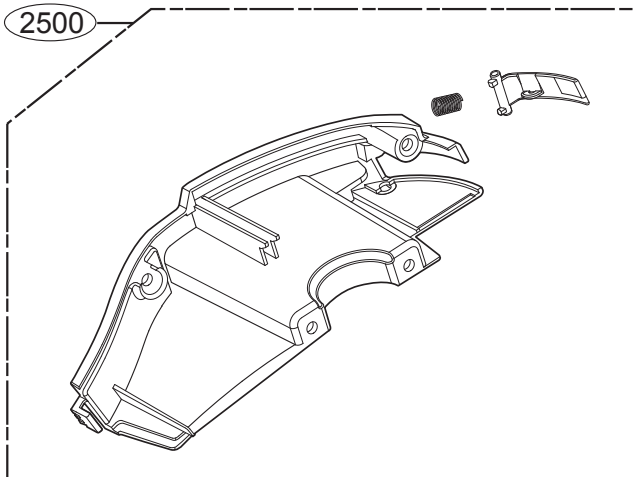
MODEL 721.37060700

LOCATION NO.	PART NO.	DESCRIPTION	QUANTITY
2201	MAM37389701	Base head	1
2202	MAZ37420001	Bracket Motor	1
2203	MFC37391501	Lever selector	1
2204	AFF36156801	Lever Assembly	1
2205	EBD37969601	Sensor Assembly	1
2206	MHJ37792401	Shaft	1
2207	MFG37419701	Locker	1
2208	MGU37788301	Ratchet	1
2209	MFG37390601	Locker	1
2210	MCK37392401	Cover pipe	1
2211	MFC37419201	Lever bottom	1
2212	MGJ37392301	Plate guide	1
2213	MBD38460401	Bumper head	1
2215	MEG37391201	Holder fixing	1
2216	MFG37419701	Locker	2
2219	MFQ37792701	Mop	2
2220	MHJ38879601	Shaft	1
2221	MCD37392001	Connector shaft	1
2222	EBF37971301	Switch Assembly	1
2223	6601FI3502A	Switch Assembly	1
2224	MHY38908303	Spring coil	1
2227	MHY38908304	Spring coil	1
2225	MDS37846501	Gasket	1
2226	MAS37628301	Belt	1
2300	AHR33031001	Shaft Assembly,Agitator	1
1700	EAU38048001	Motor	1
2900	AHJ35075501	Roller Assembly	1
7401	EBR37489701	PCB Assembly, Power	1
7402	EAD39040501	Harness, Single	1
8002	FAB00610801	Screw Tapping( $\Phi$ 3,L8)	2
8004	FAB00609201	Screw Tapping( $\Phi$ 3,L14)	1
8006	FAB00605501	Screw Tapping( $\Phi$ 4,L10)	4
8008	FAB30150401	Screw Tapping( $\Phi$ 4,L16)	4
8009	FAB00602501	Screw Tapping( $\Phi$ 4,L20)	1



# 8. EXPLODED VIEW

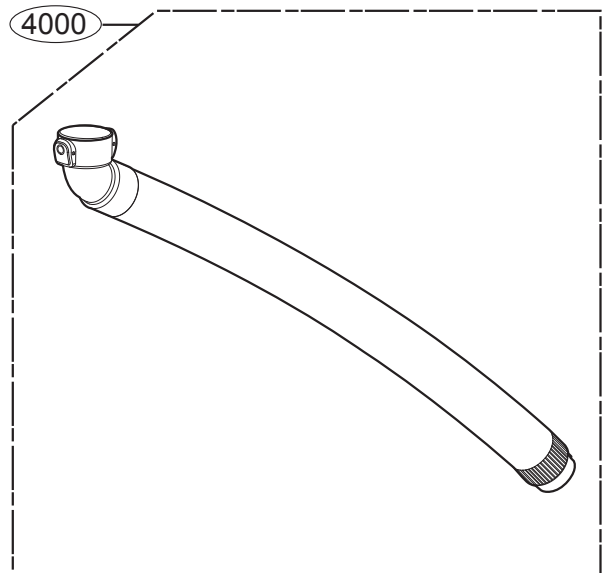
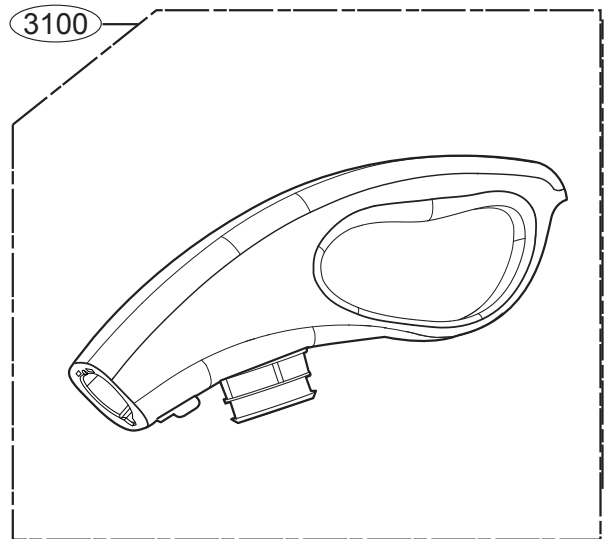
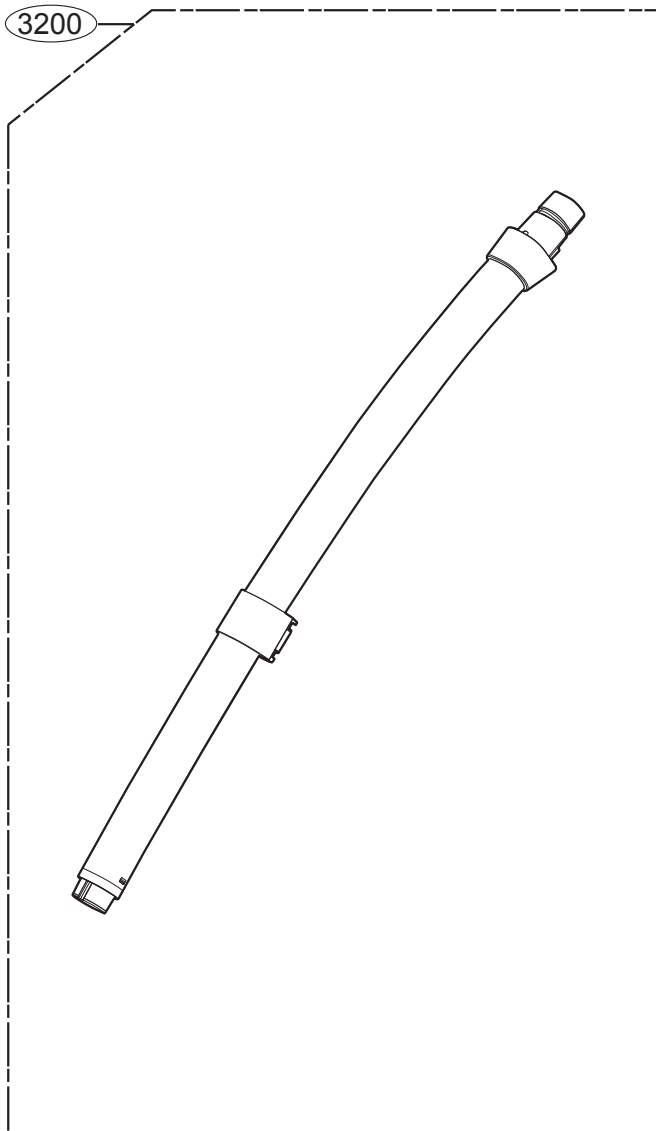
MODEL 721.37060700



LOCATION NO.	PART NO.	DESCRIPTION	QUANTITY
2400	AGU32945801	Plate Assembly, Bottom	1
2500	AGU33838501	Plate Assembly, Base	1
2600	AGU32945901	Plate Assembly, Base	1

# 8. EXPLODED VIEW

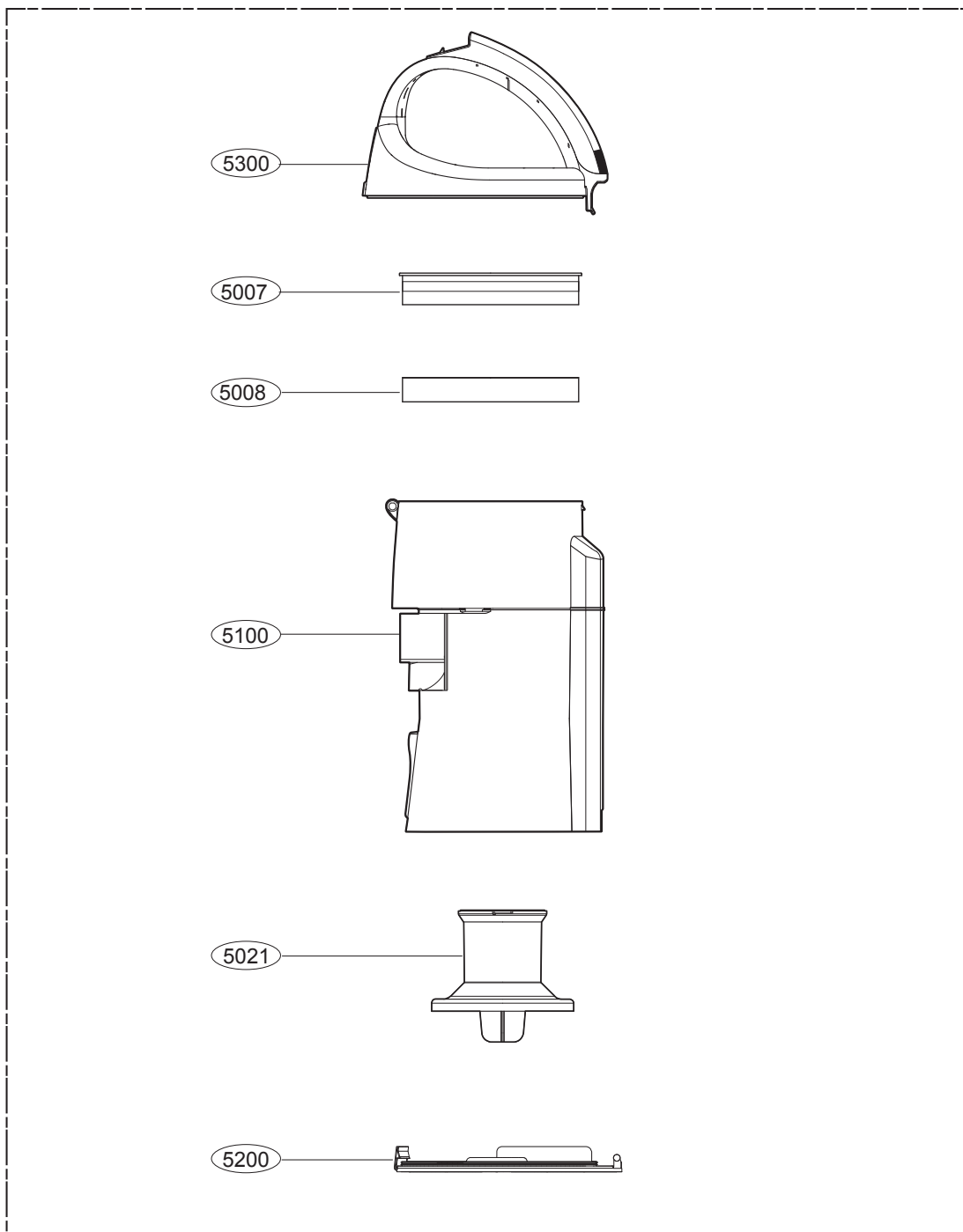
MODEL 721.37060700



LOCATION NO.	PART NO.	DESCRIPTION	QUANTITY
3100	AED32943301	Handle Assembly	1
3200	AGR34907801	Pipe Assembly,Suction	1
4000	AEM32943501	Hose Assembly,Flexible	1

# 8. EXPLODED VIEW

MODEL 721.37060700



LOCATION NO.	PART NO.	DESCRIPTION	QUANTITY
5007	MDQ37613701	Frame, Filter	1
5008	MDJ37614401	Filter, Motor Safety	1
5021	MJC37612601	Strainer, Inner	1
5100	AJL35084901	Tank Assembly, Dust	1
5200	AGU35076801	Plate Assembly, Bottom	1
5300	ACQ35100801	Cover Assembly, Dust	1

# 8. EXPLODED VIEW

MODEL 721.37060700

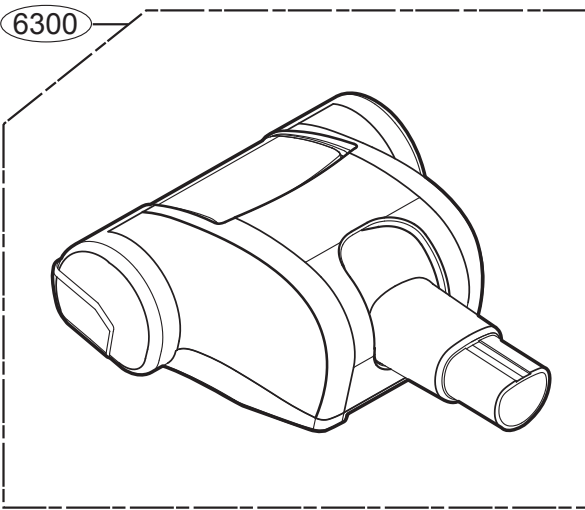
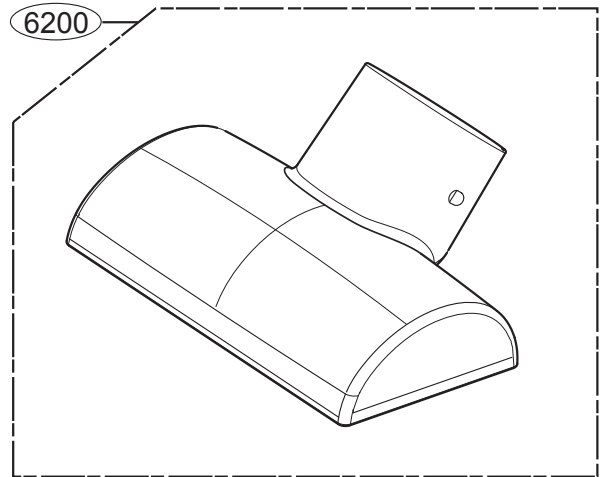
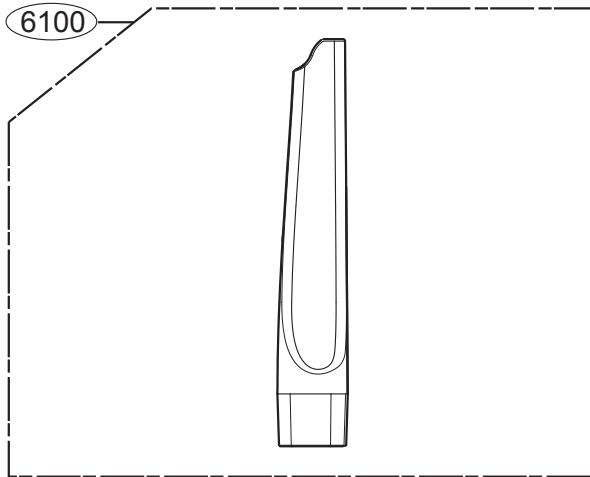


ILLUSTRATION No.	PART NO.	DESCRIPTION	QUANTITY
6100	MFV37630801	Nozzle Crevice	1
6200	ABC32946201	Brush Assembly,Dust	1
6300	AGB32946401	Nozzle Assembly,Turbine	1

# Get it fixed, at your home or ours!

## Your Home

For repair – **in your home** – of **all** major brand appliances, lawn and garden equipment, or heating and cooling systems, **no matter who made it, no matter who sold it!**

For the replacement parts, accessories and owner's manuals that you need to do-it-yourself.

For Sears professional installation of home appliances and items like garage door openers and water heaters.

**1-800-4-MY-HOME**<sup>®</sup> Anytime, day or night  
(1-800-469-4663) (U.S.A. and Canada)  
[www.sears.com](http://www.sears.com) [www.sears.ca](http://www.sears.ca)

---

## Our Home

For repair of carry-in products like vacuums, lawn equipment, and electronics, call or go on-line for the nearest **Sears Parts and Repair Center.**

**1-800-488-1222** Anytime, day or night (U.S.A. only)  
[www.sears.com](http://www.sears.com)

---

To purchase a protection agreement (U.S.A.) or maintenance agreement (Canada) on a product serviced by Sears:

**1-800-827-6655** (U.S.A.) **1-800-361-6665** (Canada)

---

Para pedir servicio de reparación a domicilio, y para ordenar piezas:

**1-888-SU-HOGAR**<sup>®</sup>  
(1-888-784-6427)

Au Canada pour service en français:

**1-800-LE-FOYER**<sup>MC</sup>  
(1-800-533-6937)  
[www.sears.ca](http://www.sears.ca)



© Sears Brands, LLC

P/No.: MFL40699801

® Registered Trademark / ™ Trademark / ℠ Service Mark of Sears Brands, LLC

® Marca Registrada / ™ Marca de Fábrica / ℠ Marca de Servicio de Sears Brands, LLC

<sup>MC</sup> Marque de commerce / <sup>MD</sup> Marque déposée de Sears Brands, LLC