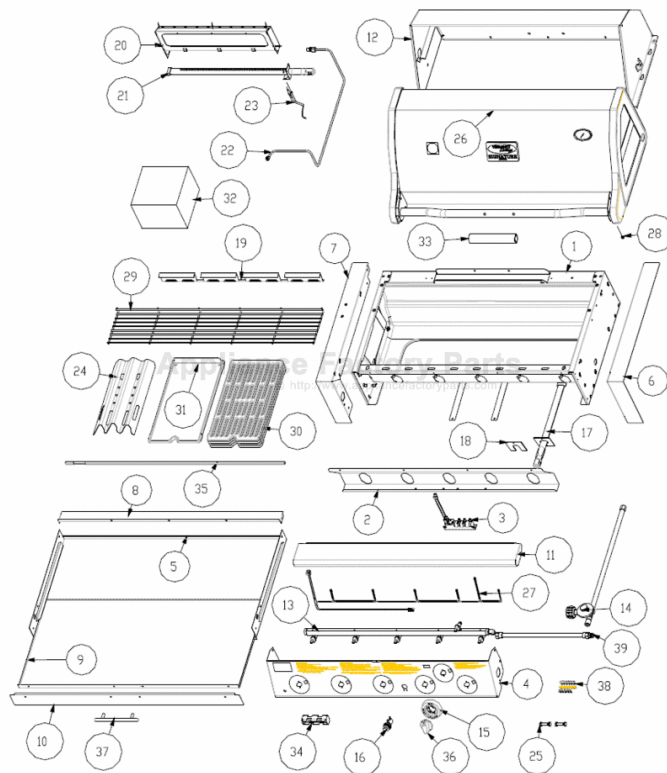


This Owner's Manual is provided and hosted by [Appliance Factory Parts](#).



Vermont Castings VCS3505B1 Owner's Manual

[Shop genuine replacement parts for Vermont Castings
VCS3505B1](#)



[Find Your Vermont Castings Grill Parts - Select From 273 Models](#)

----- Manual continues below -----



VCS3505BI/VCS5005BI ASSEMBLY PROCEDURES

Tools Required: Knife or Scissors, Philips or Robertson Screwdriver:

Step 1: Unpack carton.

*** MODEL VCS5005BI**

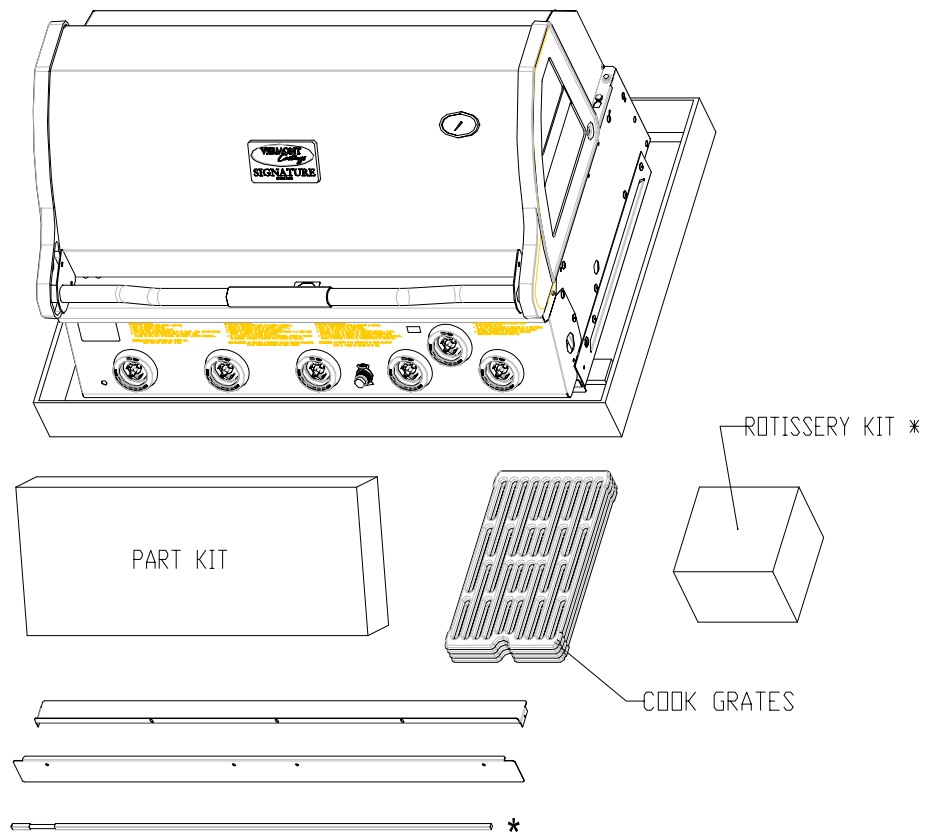


Fig- 1

Use the knife or scissors to cut the strapping on the package, and then lift off the cardboard cap. Remove the cardboard sleeve by lifting it straight over the top of the barbecue. Remove the enclosed boxes of parts and unpack the enclosed parts. Remove any protective covering from stainless steel parts.

VCS3505BI/VCS5005BI FRAMING DIMENSIONS

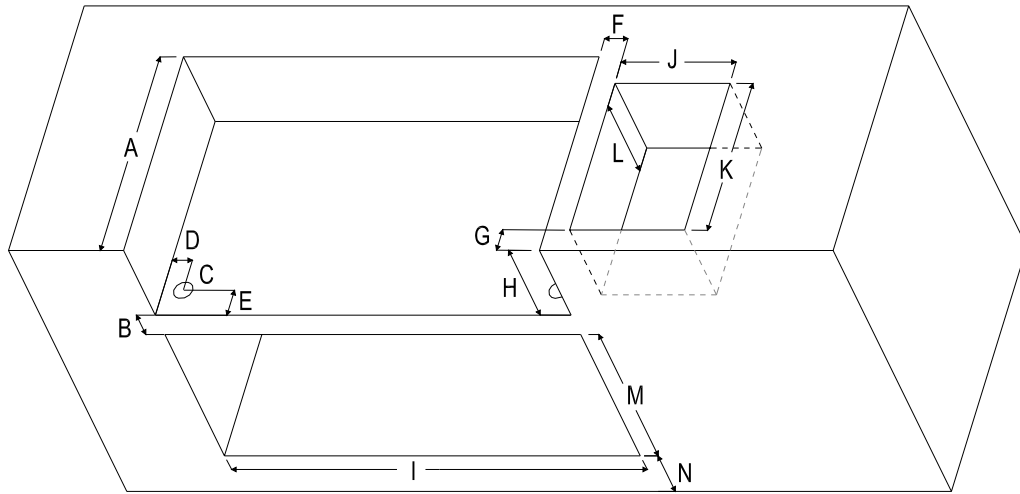


Fig- 2

ALL DIMENSIONS ARE IN INCHES

CLEARANCES

Non-Combustible Clearances			Combustible Clearances With ZC Insulated Jacket		
Reference	VCS3500BI	VCS5005BI	Reference	VCS3500BI	VCS5005BI
A	23 ¾"	23 ¾"	A	23 ¾"	23 ¾"
B	4"	4"	B	3"	3"
C	2" Dia.	2" Dia.	C	2" Dia.	2" Dia.
D	2 1/8"	2 1/8"	D	2 1/8"	2 1/8"
E	3"	3"	E	3"	3"
F	2 ½" Min.	2 ½" Min.	F	2 ½" Min.	2 ½" Min.
G	2 ½" Min.	2 ½" Min.	G	2 ½" Min.	2 ½" Min.
H	9"	9"	H	10"	10"
I	31 3/8"	43 3/8"	I	31 3/8"	43 3/8"
J	12"	12"	J	12"	12"
K	18"	18"	K	18"	18"
L	10"	10"	L	10"	10"
M	16"	18 ¾"	M	16"	18 ¾"
N	4" Min.	4" Min.	N	4" Min.	4" Min.

Note: Ensure that your grill enclosure has been constructed to the dimensions shown in Fig 2. If the enclosure is constructed of wood or other similar combustible materials, the use of the insulated jacket, Model VCIJ35A or VCIJ50A, is required.

If you have an L.P. model with a 20 lb. cylinder stored in the enclosure, ensure that there are a least two air ventilation openings of 10 sq. inches, 180 deg. apart, at the cylinder valve level, and two more at the cylinder base level. For other requirements, see section 1.7 of ANSI Z21.58a-1998/CGA 1.6a-M98- American National Standard/Canadian Gas Association Standard for outdoor cooking gas appliances.

Step 2: Assemble Fascia Brackets:

Required: Main Grill unit, Left Fascia Bracket, Right Fascia Bracket, (4) # 10 x 1/2" Bolts, (4) # 10 Lock Nuts (in provided hardware bag).

Tilt the front of the grill unit up 2 to 3 inches with a block of wood of other similar item. Carefully remove the protective plastic from the 2 fascia brackets, and the rear panel. Remove the (2) 1/4"-20 x 3/8" bolts from the top back of the left and right sides of the base assembly, and loosen the (2) front 1/4"-20 x 3/8" bolts as shown.

Attach the right hand fascia bracket to the grill base as shown. The mounting slot at the front of the bracket slides over and down the loosened front bolt. The rear is attached with the 1/4"-20 x 3/8" bolt removed previously. Also attach the lower front of the bracket with (2) # 10 bolts and (2) # 10 nuts supplied.

Repeat for the left side Fascia bracket (Fig- 3).

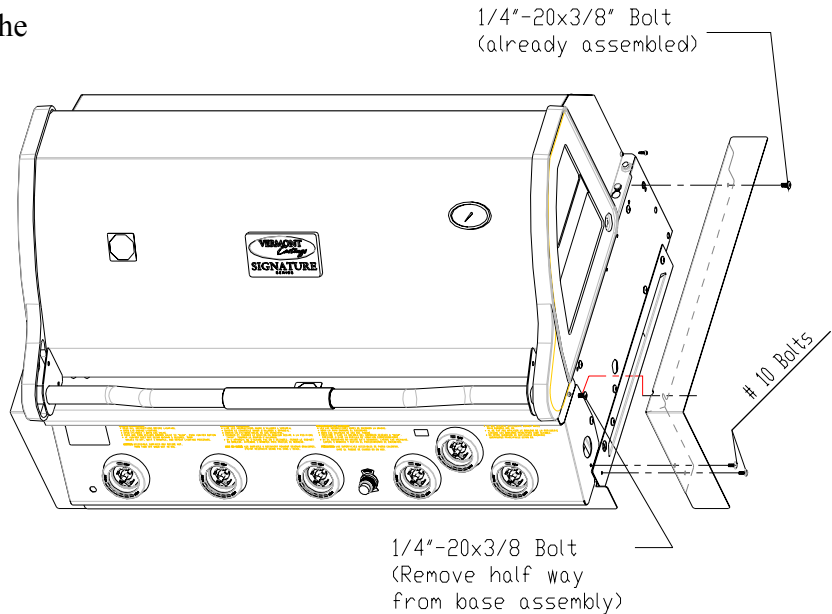


Fig- 3

Step 3: Assemble Rear Panel:

Required: Rear Panel, (5) Self-Tapping Screws

Fasten the back flange of the rear panel to the grill base With (3) self-tapping screws. Fasten the ends of the rear panel to the flanges on the left and right fascia brackets with (2) self-tapping screws (Fig- 4).

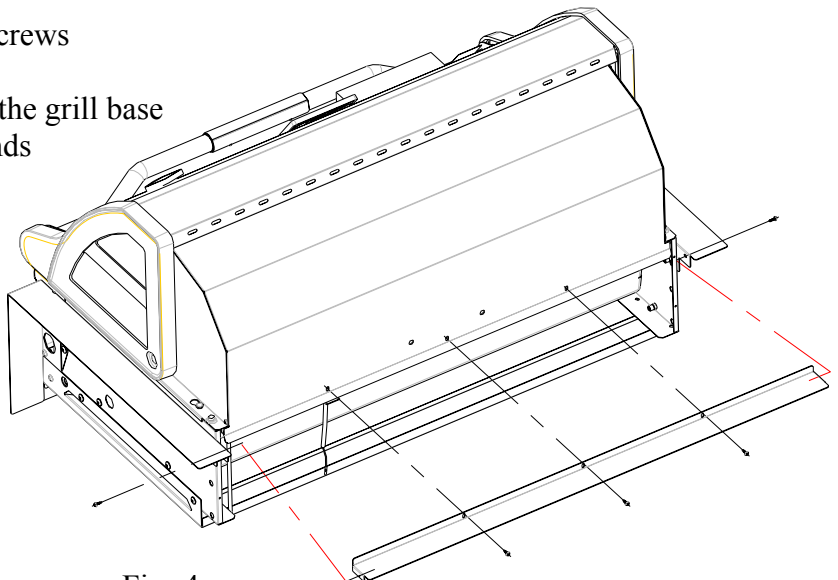


Fig- 4

Step 4: Assemble Grease Tray Front and Handle:**Required:** Grease Tray Front, Handle and Screws, (2) # 10 Bolts, (2) # 10 Nuts

Remove the grease tray from the front of the unit (Below the control console). Remove the protective plastic from the front panel and attach to the front lip of the grease tray with (2) bolts and nuts. Attach the handle to the tray with the (2) bolts supplied with the handle (Fig- 5). Do not reassemble the grease tray into the unit at this time.

NOTE: Due to the shallow depth of the grease tray, ensure it is cleaned often to avoid a possible **“Grease Fire”**.

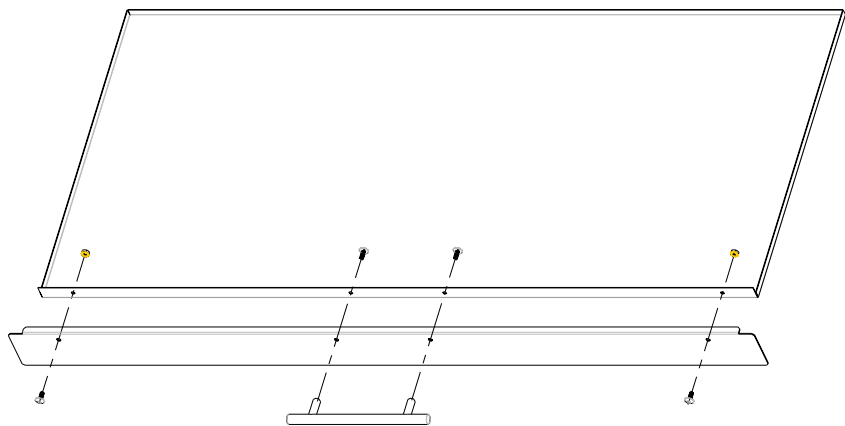


Fig- 5

Step 5: Assemble the Grill Unit to the Enclosure:**Note:** This step should be performed by 2 persons wearing gloves.

Before positioning the grill unit into the prepared enclosure or insulated jacket, it may be necessary to temporarily disconnect the LP regulator or 12 ft. natural gas hose from the steel flex line, depending on available access.

Carefully position the grill unit into the opening from the front and raised slightly, while ensuring the gas feed tubing is fed through the hole provided in the bottom of the enclosure opening. Push the unit back into its final position, and check for proper fit.

Reattach the LP regulator or hose if removed, and leak check all connections.

Reinstall the grease tray assembly into position.

The end of the steel flex line should be clamped to the surround structure to prevent excessive movement.

Step 6: Install Sear Plates, Cooking Grates, Warming Rack, and Knobs:

Required: (3) (5*) Sear Plates, (2) (4*) Cooking Grates, (1) Warming Rack, (4) (6*) Knobs:

Place the sear plates into the barbecue, ensuring the edge with the finger hole faces the front.

Position the cooking grates in the base unit with the finger holes to the front. These may be turned over to provide a flat surface for delicate foods.

Set the warming rack into the two supports in the ends of the rear lid.

Insert knobs into the valves-stem as shown (note that the indicator on the knob must face up while installing).

* Model VCS5005BI

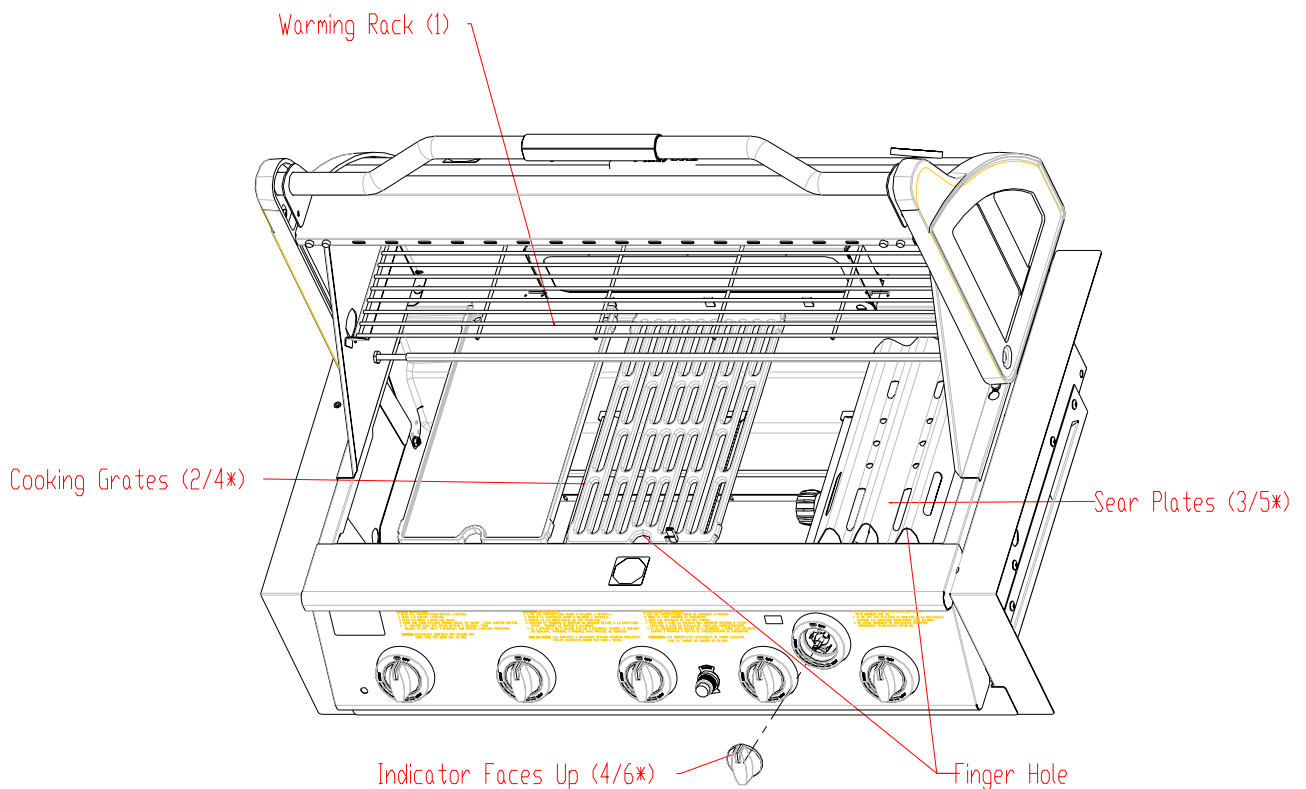


Fig- 6



CFM

CFM SPECIALTY HOME PRODUCTS

a division of CFM Corporation

410 Admiral Blvd. * Mississauga, Ontario * Canada L5T 2N6

phone: 1-800-227-8683

fax: 905-565-4690

www.myownbbq.com * www.vermontcastings.com