

This Owner's Manual is provided and hosted by [Appliance Factory Parts](#).



Centro 85-1147-4 (2008) Owner's Manual

[Shop genuine replacement parts for Centro 85-1147-4
\(2008\)](#)



[Find Your Centro Grill Parts - Select From 150 Models](#)

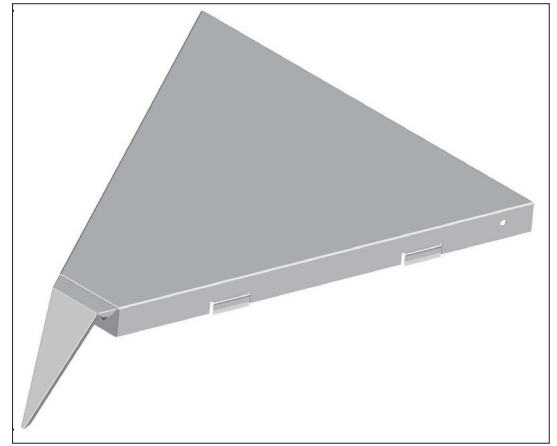
----- Manual continues below -----



Countertop Corner Leaf (#85-1147-4/ A01301)

ASSEMBLY MANUAL

Limited 1-Year Warranty



- o Extend your counter space
- o Arrange your Centro BBQ and Centro Cuisine outdoor appliances at a 45° angle
- o Connect your Centro BBQ and Centro Cuisine outdoor appliances for a seamless outdoor kitchen experience.



THIS MANUAL MUST REMAIN WITH THE PRODUCT AT ALL TIMES

To ORDER non-warranty replacement parts or accessories, or to register your warranty,
please visit us on the web at
www.centrobbqs.com.

⚠ CAUTION

Sharp edges. Wear gloves when assembling your grill.

⚠ CAUTION

Read and follow all safety statements, assembly instructions,
and use and care directions before attempting to assemble and cook.

THIS PRODUCT IS FOR OUTDOOR USE ONLY

Read and save manual for future reference.

Assemble your grill immediately.

Missing or damaged parts should be claimed within 15 days of purchase.

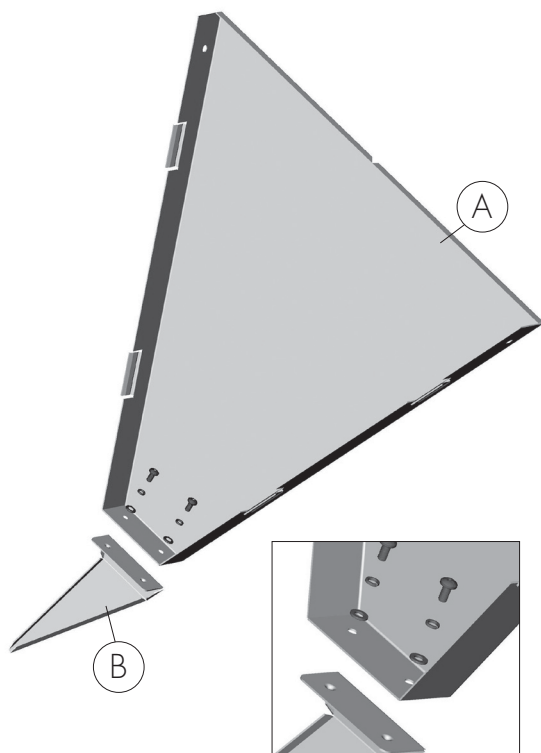
Call the Centro Hotline at 1-877-707-5463.

Exploded Diagram - Countertop Corner Leaf for 85-1147-4 (A01301)

Assembly
Manual

Safety
& Care
Manual

Hardware
Pack

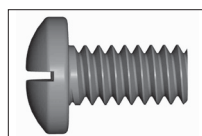


TOOLS NEEDED FOR ASSEMBLY

- #2 Phillips screwdriver (long and short)
- ¼" Slotted screwdriver (long and short)

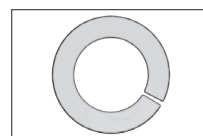
Before assembling the shelf, read these instructions carefully.

**⚠ Caution: Sheet metal can cause injury.
Wear gloves when installing.
Use care when assembling.**



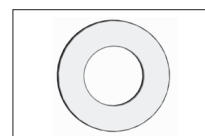
#1 x 2

No. 10-24UNCx10 Screw
(Part #: 20124-10010-250)



#2 x 2

ø7 Lock Washer
(Part #: 41400-05000-250)



#3 x 2

ø7 Washer
(Part #: 40300-05000-250)

Parts List

Key	Quantity	Description	Part Number
A	1	Main Shelf Plate	A013-0001-01
B	1	Front Corner Plate	A013-0002-01
	1	Hardware Pack	A013-B001-01
	1	Assembly Manual	A013-M001-01
	1	Safety & Care Manual	G617-M001-02

Assembly Instructions

1. Assemble the main shelf (A) to the front cover plate (B) with the hardware provided.

Note: Please assemble on a level surface.

Installation:

1. Place your BBQ in the preferred position on your deck or patio. For Centro 2800 ONLY, ensure that you leave enough room at the rear of the BBQ for turning on and off your propane tank.
2. Depending on the configuration you prefer, begin by removing your BBQ's side shelf.
TIP: Keep the side shelf and hardware handy for the final step.
3. To assemble the Cuisine Countertop Corner Leaf, insert the two hooks, located on the left side of the shelf, into the two openings located on the right upper side panel of your Centro BBQ, or cuisine appliance.
4. Align the left side of your Cuisine appliance or your Centro BBQ with the right side of the Cuisine Countertop Corner leaf.
5. Insert the two hooks on the right side of the Cuisine Countertop Corner Leaf, into the two openings located on the left side of your Centro Cuisine appliance.
6. Press the shelf firmly into position.
7. Finally, re-assemble the side shelf removed in step 2 to the right side of your Cuisine appliance, using the hardware removed.

PLEASE NOTE: Only remove the side shelves that do not include a side burner. Centro 3800 through to 6800 include a side burner on the left side shelf. For these models, ONLY remove the Right side shelf.