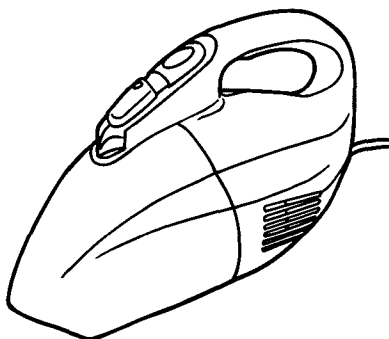




OWNER'S MANUAL
Operating and Servicing
Instructions

Scorpion™



- Please read these instructions carefully before using your Scorpion™ Hand Vac.
- Let us help you put your cleaner together or answer any questions, call:

1-800-321-1134
(USA & Canada)

website: www.dirtdevil.com



WARNING:

Cleaner assembly may include small parts. Small parts can present a choking hazard.

For quick reference, please record your vacuum information below.

Model #: _____

Mfg. Code: _____

(Mfg. code located on the lower backside of cleaner)

CONGRATULATIONS

You are now the proud owner of the Dirt Devil® Scorpion™ Hand Vac. Power is not a question with the Scorpion™. This 5 amp/600 watt Hand Vac has the ability to “Put The Power of an Upright in the Palm of Your Hand”™ The Scorpion™ comes with numerous useful tools to make your cleaning process hassle free. These tools include a crevice tools, hose, and upholstery brush. We trust your new purchase will bring you many years of satisfaction.

We are very proud of our products and hope that you are equally satisfied with their quality and performance.

Thank you for your support of Dirt Devil® products.
Visit our website at www.dirtdevil.com

TABLE OF CONTENTS

Safety Instructions.....	Page 3
Feature Descriptions.....	Page 4
How To Operate.....	Page 4
Attachment Usage.....	Page 5
Dirt Cover & Filter: Removal & Replacement.....	Page 6
Troubleshooting Guide.....	Page 7

LIMITED WARRANTY

To the consumer, Royal Appliance Mfg. Co. warrants this vacuum cleaner to be free of defects in material or workmanship commencing upon the date of the original purchase. Refer to your vacuum cleaner carton for the length of warranty and save your original sales receipt to validate start of warranty period.

If the vacuum cleaner should become defective within the warranty period, we will repair or replace any defective parts free of charge. The complete machine must be delivered prepaid to any ROYAL® Authorized Sales & Warranty Service Station. Please include complete description of the problem, day of purchase, copy of original sales receipt and your name, address and telephone number. If you are not near a Warranty Station, call the factory for assistance at USA & Canada: 1-800-321-1134. Use only genuine Royal® replacement parts.

The warranty does not include unusual wear, damage resulting from accident or unreasonable use of the vacuum cleaner. This warranty does not cover brushes, flat belts, filters, bulbs. This warranty does not cover unauthorized repairs. This warranty gives you specific legal rights and you may also have other rights. (Other rights may vary from state to state in the USA).

CONSUMER INFORMATION

- THIS VACUUM IS INTENDED FOR HOUSEHOLD USE ONLY.

IMPORTANT SAFETY INSTRUCTIONS

When you use an appliance, basic precautions should always be followed, including the following:

- READ ALL INSTRUCTIONS BEFORE USING THIS APPLIANCE
- ALWAYS FOLLOW THESE SAFETY INSTRUCTIONS
- DO NOT LEAVE CLEANER UNATTENDED
- WARNING - FULLY ASSEMBLE CLEANER BEFORE OPERATING

WARNING: TO REDUCE THE RISK OF FIRE, ELECTRIC SHOCK OR INJURY:

- Do not leave appliance when plugged in. Unplug from outlet when not in use and before servicing.
- Do not use outdoors or on wet surfaces.
- Do not allow to be used as a toy. Close attention is necessary when used by or near children.
- Use only as described in this manual. Use only manufacturer's recommended attachments.
- Do not use with damaged cord or plug. If appliance is not working as it should, has been dropped, damaged, left outdoors, or dropped into water, return it to a service center for inspection. Call 1-800-321-1134 for the nearest service center.
- Do not pull or carry by cord, use cord as a handle, close a door on cord, or pull cord around sharp edges or corners. Do not run appliance over cord. Keep cord away from heated surfaces.
- Do not unplug by pulling on cord. To unplug, grasp the plug, not the cord.
- Do not handle plug or appliance with wet hands.
- Do not put any object into openings. Do not use with any opening blocked; keep free of dust, lint, hair and anything that may reduce air flow.
- Keep hair, loose clothing, fingers, and all parts of body away from openings and moving parts.
- Turn off all controls before unplugging.
- Use extra care when cleaning on stairs.
- Do not use to pick up flammable or combustible liquids, such as gasoline, or use in areas where they may be present.
- Look on your vacuum cleaner and follow all label and marking instructions.
- Do not use an extension cord with this cleaner.
- Keep end of hose, wands and other openings away from your face and body. Keep your hands, feet, hair and clothing away from moving parts; especially the revolving brush.
- Do not use the vacuum cleaner without dirt container and/or filters in place.
- Store the vacuum cleaner indoors. Put the vacuum cleaner away after use to prevent tripping accidents.
- Do not pick up anything that is burning or smoking, such as cigarettes, matches, or hot ashes.

Approved by the Vacuum Cleaner Manufacturer's Association Executive Committee, April 29, 1987.

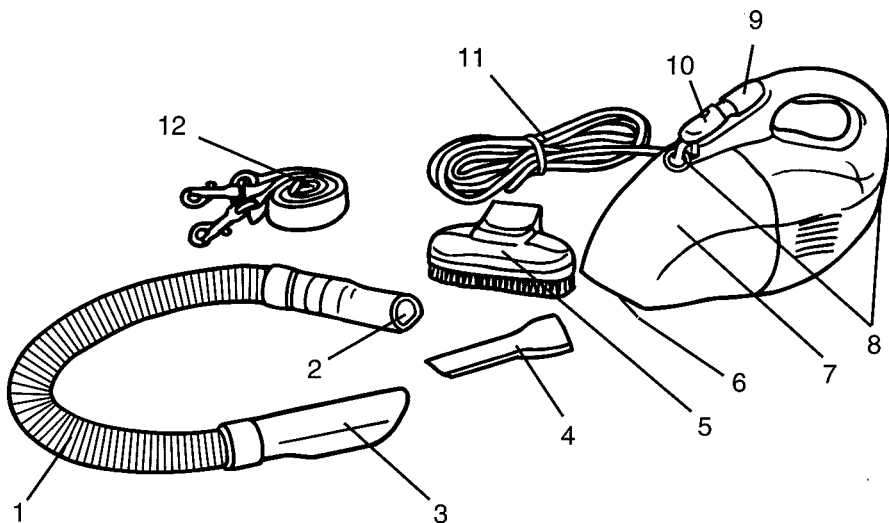
SAVE THESE INSTRUCTIONS

WARNING: To reduce the risk of electric shock, this appliance has a polarized plug (one blade is wider than the other). This plug will fit in a polarized outlet only one way. If the plug does not fit fully in the outlet, reverse the plug. If it still does not fit, contact a qualified electrician to install the proper outlet. Do not change the plug in any way.

NOTE: RETURN WARRANTY CARD TO REGISTER YOUR CLEANER

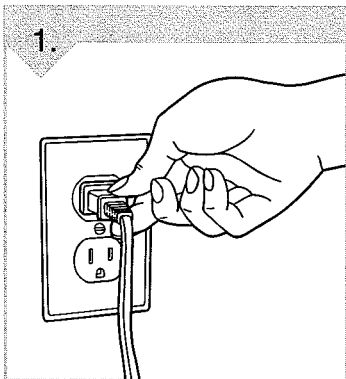
Your cleaner contains a Thermal Protector which will automatically shut off the motor at abnormally high motor temperatures. If the Thermal Protector is activated - switch off and unplug the cleaner. Contact an authorized service representative or call Customer Service at 1-800-321-1134.

FEATURES

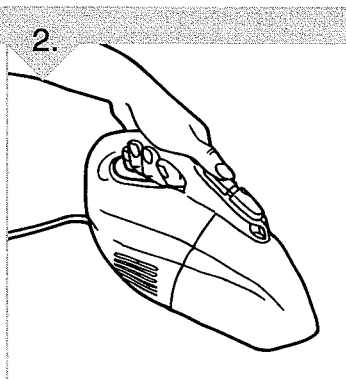


- | | |
|---------------------------|-----------------------------|
| 1. Hose | 7. Dirt Cup |
| 2. Vacuum End of Hose | 8. Shoulder Strap Holes |
| 3. Attachment End of Hose | 9. On/Off Switch |
| 4. Crevice Tool | 10. Dirt Cup Release Button |
| 5. Upholstery Brush | 11. Power Cord |
| 6. Nozzle | 12. Shoulder Strap |

HOW TO OPERATE



1. Plug cord into electrical outlet.



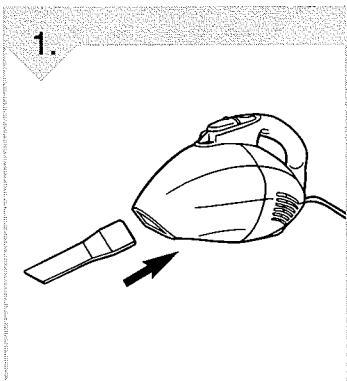
2. Slide the power switch to the **on** position.

ATTACHMENT USAGE

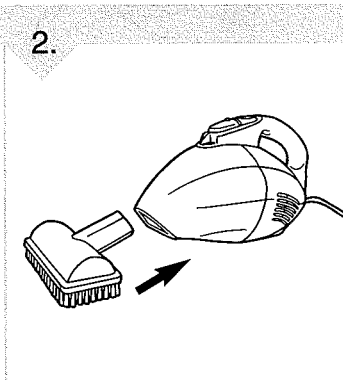
NOTE: Always turn off appliance before connecting or disconnecting attachments.

Shoulder Strap: Included for your convenience. **To Attach:** Connect clasp to front & back of cleaner. See Features List, page 4, for hole location.

CREVICE TOOL USAGE

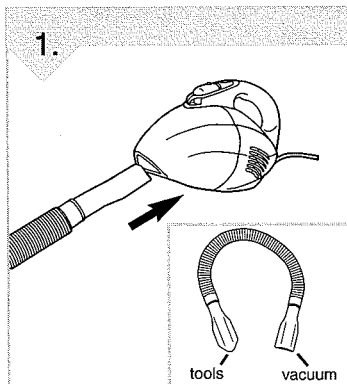


BRUSH TOOL USAGE



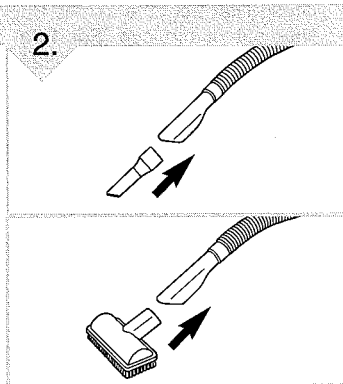
To use: insert attachments into the nozzle opening (Diagrams 1 & 2).

HOSE USAGE



To use: insert flat end of hose onto nozzle opening.

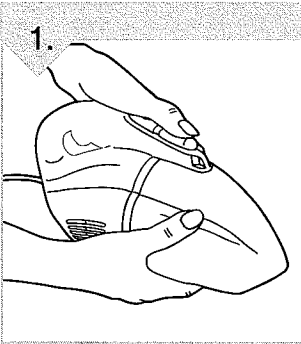
HOSE AND TOOL USAGE



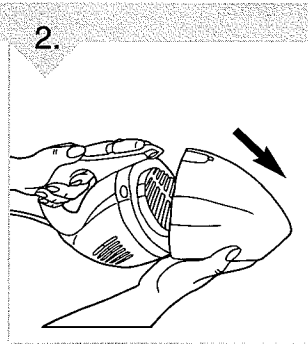
For extended reach with tools, insert attachments into triangular end of hose.

DIRT CONTAINER & FILTER: REMOVAL & REPLACEMENT

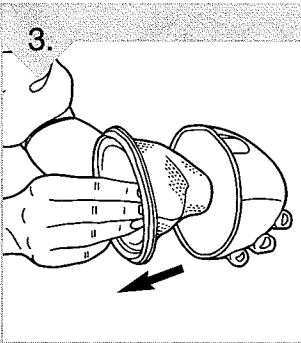
NOTE: *Unplug cleaner before changing filter.*



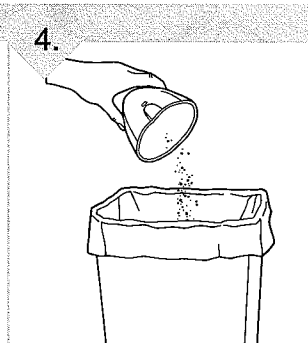
Press dirt cup release latch.



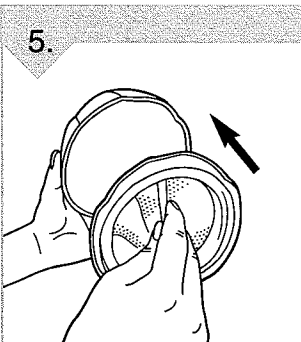
Tilt dirt cup down and away from unit.



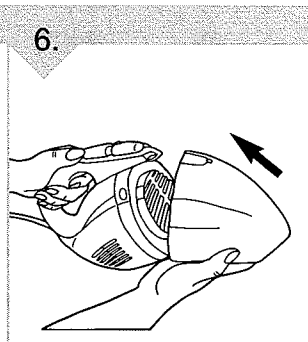
Grasp filter from the center. Pull filter out of dirt cup. **For filter replacement call 1-800-321-1134**



Empty contents into waste basket.



Return filter to dirt cup.



Reattach by aligning slot on dirt cup with the base of unit. Tilt cup up until it locks into place.

TROUBLE SHOOTING GUIDE

WARNING: TO REDUCE RISK OF PERSONAL INJURY - UNPLUG CLEANER BEFORE SERVICING

Problem	Possible Causes	Possible Solutions
Cleaner won't run	<ol style="list-style-type: none"> 1. Power cord not firmly plugged into outlet. 2. Needs service 	<ol style="list-style-type: none"> 1. Plug unit in firmly. 2. Take to service center or call 1-800-321-1134.
Cleaner won't pick-up or low suction	<ol style="list-style-type: none"> 1. Dirt cup not installed correctly. 2. Dirt cup full. 3. Clogged filter. 	<ol style="list-style-type: none"> 1. Review dirt container removal and replacement - Pg. 6. 2. Empty dirt container - Pg. 6. 3. Remove filter and clean - Pg. 6.
Dust escaping from cleaner	<ol style="list-style-type: none"> 1. Dirt cup full. 2. Dirt cup not installed correctly. 3. Filter not installed correctly. 	<ol style="list-style-type: none"> 1. Empty dirt cup - Pg. 6. 2. Review dirt cup removal and replacement - Pg. 6. 3. Review filter installation - Pg. 6.
Cleaner tools won't pick up	<ol style="list-style-type: none"> 1. Hose clogged. 2. Dirt cup full. 3. Filter clogged. 	<ol style="list-style-type: none"> 1. Remove hose and tools; remove obstruction - Pg. 5. 2. Empty dirt container - Pg. 6. 3. Clean filter - Pg. 6.

ANY OTHER SERVICING SHOULD BE DONE BY AN AUTHORIZED SERVICE REPRESENTATIVE

CUSTOMER SERVICE (1-800-321-1134)

In the event that further assistance is required, see your Yellow Pages for an authorized Royal® Dealer. Costs of any transportation to and from any place of repair are to be paid by the owner. The service parts used in this unit are easily replaced and readily available from an authorized Royal® Dealer or retailer. Always identify your cleaner by the model number when requesting information or ordering replacement parts. (The model number appears on the bottom of the cleaner.)