

This Owner's Manual is provided and hosted by [Appliance Factory Parts](http://www.appliancefactoryparts.com).



PANASONIC NC-HU401P Owner's Manual

[Shop genuine replacement parts for PANASONIC
NC-HU401P](#)



[Find Your PANASONIC Small Appliance Parts - Select From 148 Models](#)

----- Manual continues below -----

Panasonic®

Operating Instructions

使用說明書

Manuel d'utilisation

Electric Thermo Pot

電子保溫熱水瓶

Bouilloire thermo électrique

Model No. / 型號 / Numéros de modèles

NC-HU401P

NC-HU301P



Thank you for purchasing the Panasonic product.

Please read these instructions carefully and follow safety precautions when using this product. Before using this product please give your special attention to "IMPORTANT SAFEGUARDS" (P. 4~5). This product is intended for household use only.

感謝您購買Panasonic產品。

請仔細閱讀本使用說明書並按照安全注意事項使用此產品。使用此產品前請特別留意“重要的安全措施”（第6~7頁）。本產品只是供家庭用途使用。

Merci beaucoup d'avoir acheté Produit Panasonic.

Veuillez lire ces instructions avec attention et suivre les consignes de sécurité lors de l'utilisation de ce produit. Avant d'utiliser ce produit, soyez particulièrement attentif aux "PRÉCAUTIONS IMPORTANTES" (P. 8~9). Ce produit est uniquement destiné à une utilisation domestique.

⑥

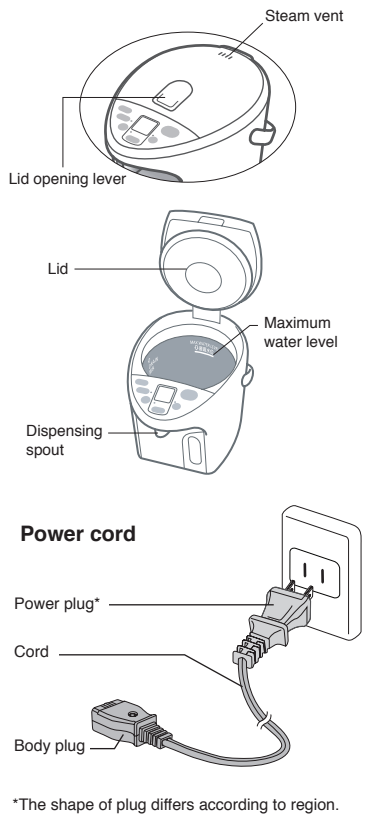
Table of Contents

Important Safeguards	4
Main Features	10
Safety Precautions	11
Part Names and Handling Instructions	14
Preparation before Using	15
How to Use	16
Convenient use methods.....	18
Care & Cleaning	20
Troubleshooting.....	22
Replacement of Parts.....	23
Specifications	Back cover

IMPORTANT SAFEGUARDS

When using electrical appliances, basic safety precautions should always be followed, including the following:

- 1. Read all instructions.**
- 2. Do not touch hot surfaces, especially the steam vent. Use handles or knobs.**
- 3. To protect against fire, electric shock and personal injury, do not immerse cord, plugs, or Thermo Pot in water or other liquid.**
Do not splash water or other liquid over them.
 - Do not pour water directly from the tap.
 - Do not put the unit in a sink or allow it to get wet.
 - Do not turn the unit upside down when the bottom is wet.
- 4. Close supervision is necessary when any appliance is used by or near children.**
 - Do not allow children and persons unfamiliar with the appliance to use it.
Do not leave the unit within the reach of infants.
 - You must pay special attention to prevent infants from putting the body plug into their mouth.
- 5. Unplug from outlet when not in use and before cleaning. Allow to cool before putting on or taking off parts, and before cleaning the appliance.**
 - When unplugging, pull by the power plug - not the cord.
- 6. Do not operate any appliance with a damaged cord or plug or after the appliance malfunctions, or has been damaged in any manner. Return appliance to the nearest authorized service center for examination, repair or adjustment.**
 - Never disassemble, repair, or modify the unit.
 - If the supply cord is damaged, it must be replaced by a special cord available from the manufacturer or its service agent.
- 7. The use of accessory attachments not recommended by the appliance manufacturer may result in fire, electric shock or personal injury.**
- 8. Do not use outdoors.**
- 9. Do not let cord hang over edge of table or counter, or touch hot surfaces.**
- 10. Do not place on or near a hot gas or electric burner, or in a heated oven.**
Do not place on unstable surfaces or surfaces that can be affected by heat, or near walls or furniture.
- 11. Extreme caution must be used when moving an appliance containing hot liquids.**
 - When carrying the unit, do not touch the lid opening lever.
- 12. Always attach plug to appliance first, then plug cord into the wall outlet.**
 - Make sure the power plug is correctly inserted in to the wall outlet when in use.
 - Do not connect or disconnect the power plug or the body plug with wet hands.
- 13. Use a single outlet that matches the power rating of the unit.**
- 14. Clean dust from the power plug or the body plug regularly.**
 - A build-up of dust on the plug will attract condensation, which could cause cable damage resulting in fire. Remove the plugs and clean them with a dry cloth.



15. Do not allow small metal parts near the body plug.
16. Only use the power cord designed specifically for the unit. Do not use a different cord and do not use this cord with any other device.
17. Do not let the unit fall over.
 - Do not lift, tilt, or shake the unit or carry it by the lid.
 - Even when the dispense key is locked, hot water may leak through the dispensing spout and the steam vent, causing burns, if the unit falls over or is tilted.
18. Close the lid securely, and not by force.
19. Do not throw away remaining hot water while the lid is attached.
20. When opening the lid, keep hands away from the steam.
21. Do not open the lid or dispense hot water while boiling.
22. Do not fill above maximum water level.
23. Do not block the steam vent.
24. Do not rotate the unit while dispensing hot water.
25. Do not use appliance for other than intended use.
 - Do not use to store ice. Condensation will occur, creating a potential source of electric shock and malfunction.
 - Do not heat tea bags, tea leaves, milk, alcohol or anything other than water. Such items may spurt out and cause burns. The water tube may also get clogged, the inner container may burn or corrode, and the fluororesin insulating coating may peel off.

SAVE THESE INSTRUCTIONS

Notes:

- A. A short cord is provided to reduce the risk of entanglement or tripping over a longer cord.
- B. Extension cords are available and may be used if care is exercised in their use.
- C. If extension cord is used,
 - 1) the marked electrical rating of the extension cord should be at least as great as the electrical rating of the appliance, and
 - 2) the cord should be arranged so that it will not drape over the countertop or tabletop where it can be pulled on by children or tripped over unintentionally.
- D. This appliance has a polarized plug (one blade is wider than the other). As a safety feature, this plug will fit in a polarized outlet only one way. If the plug does not fit fully in the outlet, reverse the plug. If it still does not fit, contact a qualified electrician.
Do not modify the plug in any way.

Main Features

Tasty

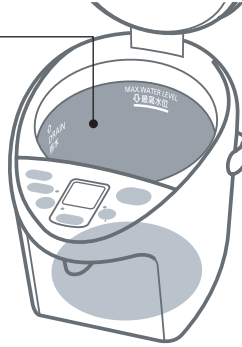
Boiling with diamond fluorine and BINCHO charcoal.

- Particles of diamond and ground BINCHO charcoal are mixed with fluorine and used for inner container. Color, taste and aroma of tea can be maintained.

Healthy tea mode

(How to use, refer to P.19)

- Boiled water is alkalified, and promotes easy extraction of tea component such as catechin.



Convenient

Hot water is dispensed in 4 levels

(How to use, refer to P.17)

- Dispense volume of hot water varies depending on degree of pressing and dispensing time.

Cordless dispensing of hot water

(How to use, refer to P.17)

- Hot water can be dispensed even if cord is removed or during a power failure/interruption.



Economy use

4 Timer selections

4 / 6 / 8 / 10 hour Timer can be selected.

(See "Setting the timer" on P.19)

Energy saving

Heater is controlled to suit the purpose of use. Power is saved automatically by only boiling during dispensing hours and cutting the heater at all other times.

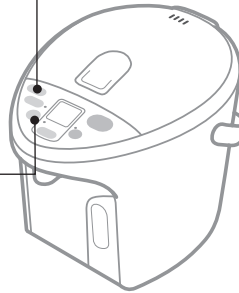
3 Keep-warm temperature selections

208 / 190 / 180 keep-warm temperature can be selected.

(See "Keep-warm function" on P.19)

U-VIP Keep-warm

The heat insulator maintains the hot water temperature, saving electricity.



Safety Precautions

Please observe these precautions fully

For safety and in order to prevent property damage and hazards to users and others, please read the following instructions strictly.

■ The signals indicate harm and damage when the product is used wrongly.



WARNING

Indicating "it may cause severe injuries and death."



CAUTION

Indicating "the user may get injured or the product may cause property damage."

■ The symbols indicate specified items that must be followed.



This symbol indicates prohibition.



This symbol indicates mandatory.



WARNING

To Prevent Burns



This appliance is not intended for use by persons (including children) with reduced physical, sensory or mental capabilities, or lack of experience and knowledge, unless they have been given supervision or instruction concerning use of the appliance by a person responsible for their safety. Children should be supervised to ensure that they do not play with the appliance.

Do not let the unit fall over. Do not lift, tilt or shake the unit or carry it by the lid.

Even when the dispense key is locked, hot water may leak through the dispensing spout and the steam vent, causing burns, if the unit falls over or is tilted.

Do not pour in water above the maximum water level indication line. If the appliance is overfilled, boiling water may be ejected.

Hot water can spill causing burns.

Do not close the lid by force.

Hot water can spill causing burns.

Do not boil anything other than water.

Do not heat tea bags, tea leaves, milk, alcohol or anything other than water which may cause it to spurt out hot liquid or steam and cause burns.

The water tube may also get clogged, the inner container may burn or corrode, and the fluoro-resin insulating coating may peel off.

Do not block the steam vent.

Hot water can overflow causing burns.

Do not dump the remaining hot water while the lid is attached.

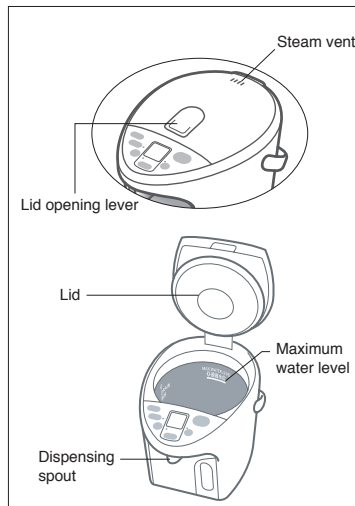
If the lid comes off, hot water may splash causing burns.

Do not touch the steam vent.

This may cause burns. Take special care to prevent infants from touching the steam vent.

Close the lid securely.

If the unit topples, hot water may spill out causing burns.



Safety Precautions

Please observe these precautions fully

WARNING

Power Cord



Never do anything that might cause damage to the cord, power plug or body plug, such as damage them, modify them, place hot objects near to them, bend them, twist them, stretch them, place heavy objects on them, or bundle them together.

If the unit is used when damaged, electrical short circuit or fire may result.

- If the supply cord is damaged, it must be replaced by a special cord available from the manufacturer or its service agent.

Do not connect or disconnect the power plug or the body plug with wet hands. This may result in electric shock.

Do not allow infants access the body plug.

You must pay special attention to prevent infants from putting the body plug into their mouth. This may result in electric shock or injury.

Do not place small metal parts near the body plug.

This may result in electric shock, electrical short circuit or fire.



Make sure the power plug is correctly inserted into the wall outlet.

If the plug is inserted improperly it may cause electric shock or generate heat resulting in fire.

- Do not use a damaged plug or a connection in a loose outlet.

Clean dust from the power plug or the body plug regularly.

A build-up of dust on the plug will attract condensation, which could cause cable damage and the deterioration of insulation resulting in fire.

- Remove the plugs and clean them with a dry cloth.

Use a dedicated outlet that matches the power rating of the unit.

Heat generated when plugging in multiple appliances into one outlet may result in fire.

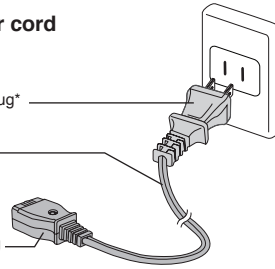
Power cord

Power plug*

Cord

Body plug

*The shape of plug differs according to region.



During use



Do not immerse the unit in water or splash water over it.

- Do not supply water directly from the tap or place the unit in a sink where the bottom may get wet.
- Do not turn the unit upside down when the bottom is wet. It may cause a short circuit and may result in electric shock. If water overflows from the pot and it enters the electrical parts built into the main unit, it may cause a malfunction.

Never disassemble, repair or modify the unit.

Any attempt to do so may cause the unit to operate abnormally and may result in fire or injury.

- If in need of repair (except for the replacement parts), please contact an authorized Service Center.

Do not use to store ice.

Condensation will occur, creating a potential source of electric shock and malfunction.



CAUTION

To Prevent Burns



Do not place the unit on an unstable surface.
The appliance may topple over causing burns.

Do not open the lid or dispense hot water while boiling.
Splashing hot water or steam may cause burns.

Do not rotate the unit while dispensing hot water.
Splashing hot water may cause burns.

Do not touch the hot parts of the unit during use or shortly after use.
This may cause burns.



When carrying the unit, do not touch the lid opening lever.
The lid may open causing burns and other injury.

Wait until the unit is cooled down before maintenance.
A hot appliance may cause burns.
● When disposing hot water, be careful not to get burned.

When opening or closing the lid, keep hands away from the steam.
Steam can cause burns.

Power Cord



Do not use a different cord and do not use this cord with any other device.
(Do not use a power cord other than the one designed specifically for the unit.)
It may cause a malfunction or fire.



When the unit is not in use, unplug the power plug from the wall outlet.
Deteriorating insulation may result in electric shock and/or fire.

When unplugging the unit, pull by the power plug - not the cord.
Electric shock and short circuit may result in fire.

During use



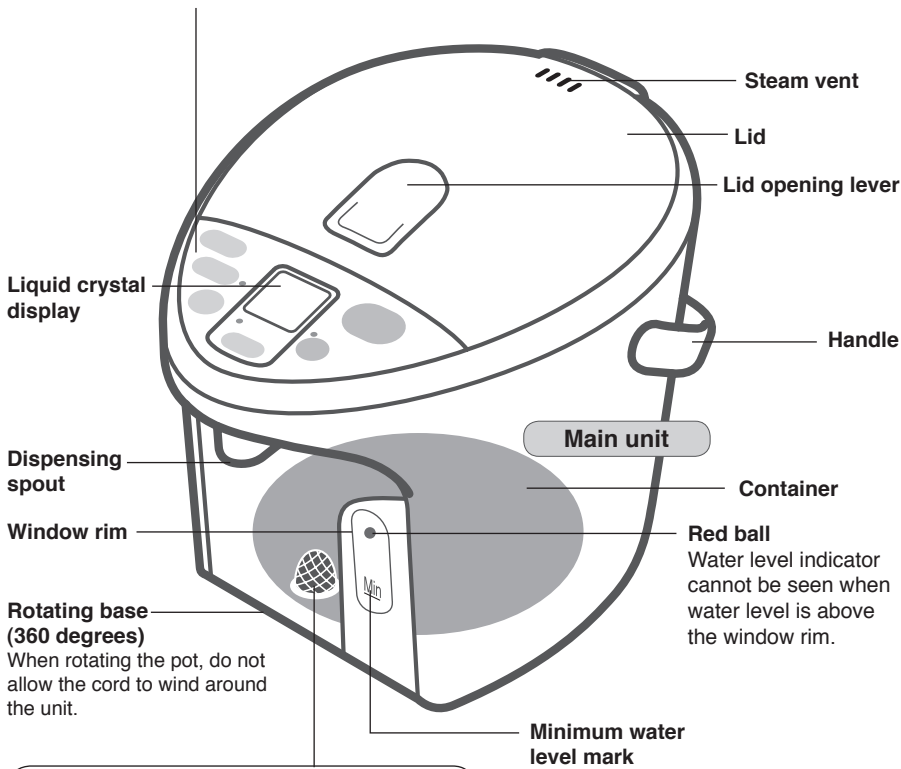
Do not use the unit on surfaces that can be affected by heat for a long time.
The unit may get discolored or break.

Do not place near walls or furniture.
Steam and heat could damage walls and furniture, causing a change in color and shape.

Part Names and Handling Instructions

Operation panel

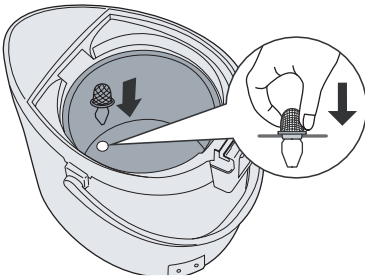
If the protective film is still covering the surface of the operation panel, peel it off before using the operation panel.



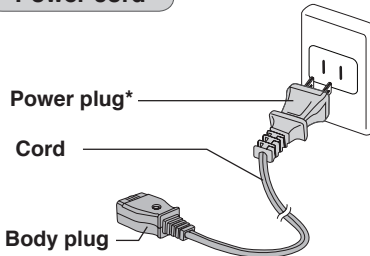
Mesh filter

(Replaceable part)

It may have come off from the bottom of the container. Push it completely into the correct position. (See P.23)



Power cord



*The shape of plug differs according to region.

Preparation before using

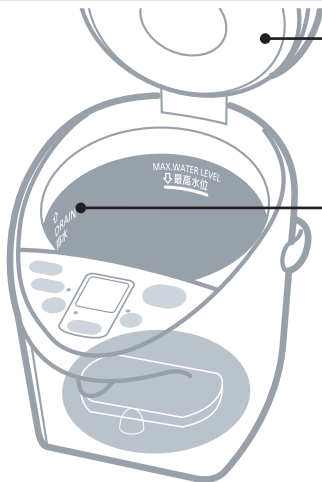
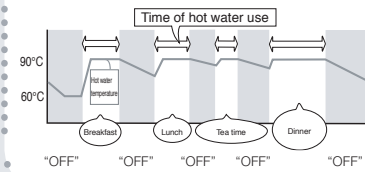
Energy Saving Timer

Economy use

Auto save power (⇒ P.18)

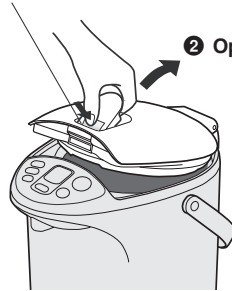
- Control heater per use method. Heat during the period of hot water supply, and automatically cut off heater beyond the period of hot water supply to save the warm-keeping power.

- From the beginning of use, save "the period of hot water supply".
- Within the first week for use, automatically raise water temperature to warm-keeping temperature based on "the period of hot water supply". One week later, automatically heat water according to all of the "period of hot water supply" of the previous week.



How to Remove the Lid

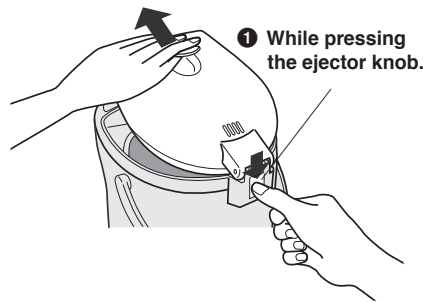
- 1 Press the depression, open the lid and lift up the knob.



- 2 Open the lid.

How to close : Press down on lid until it clicks.

- 2 Pull it up diagonally.



- 1 While pressing the ejector knob.

How to set : Insert the lid at an angle.

Before you use this pot for the first time

Boil water in it to clean the thermo pot container and the sections through which the hot water is dispensed.

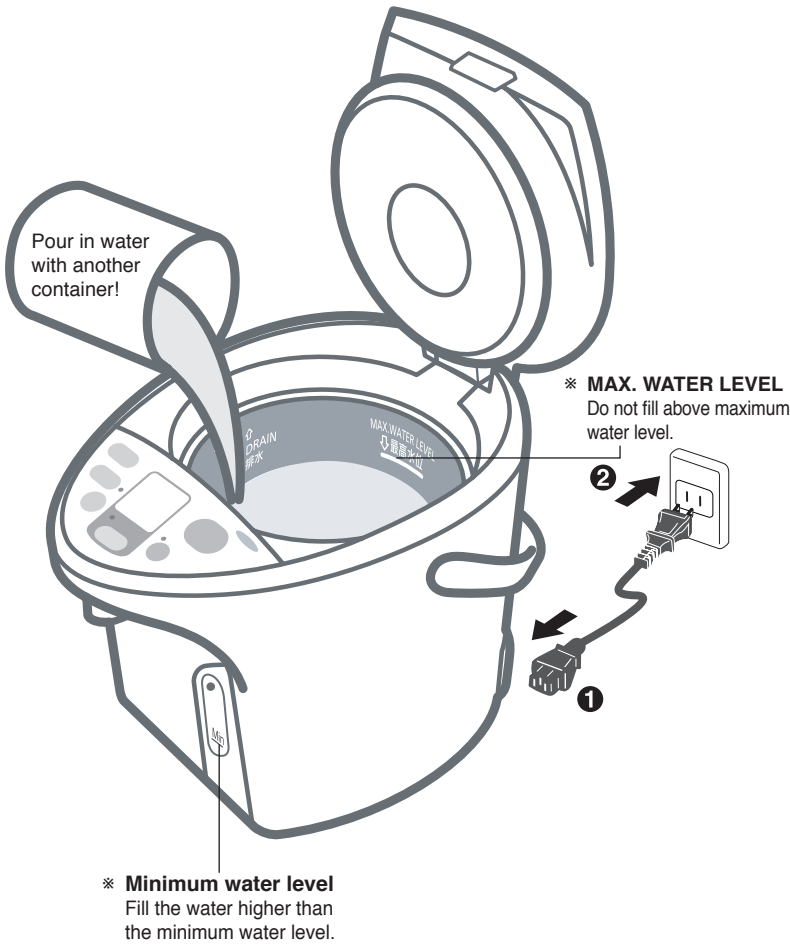
- 1 Boil some water.
- 2 Dispense the hot water.
- 3 Empty the container via "DRAIN" mark.

Preparation before using


How to Use

Boiling water

Dispense



Long Boil: To reduce the chlorine in the water

Press  key to make the indicator light flash.

(Press one time while water is being boiled, and)
(press twice while water is being kept warm.)

Extends the boiling time by about 6 minutes to reduce the chlorine in the water by about 80%.

- Press  key again to boil.

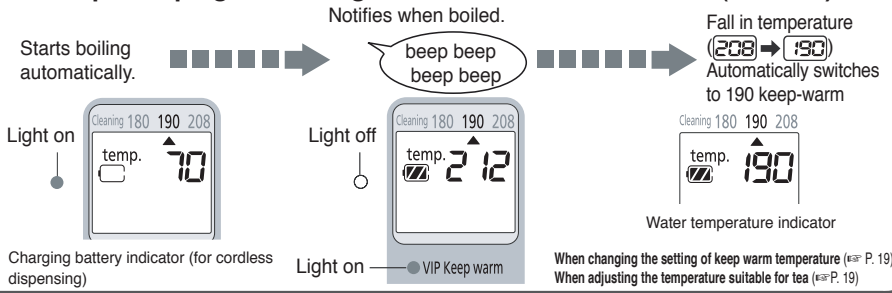
Reboil: Or keeping water warm

There may be a case where boiling does not start automatically.



Press one time and it will light up.

Connect the power plug after filling with water and close the lid. (① → ②)



Dispensing speed of hot water varies depending on degree of pressing and dispensing time.

	Dispensing period (Amount of time to press continuously)		
	Less than 5 seconds	From 5 to 12 seconds	More than 12 seconds
Press slightly	LEVEL [1 bar]		
Press strongly	LEVEL [2 bars]	LEVEL [3 bars]	LEVEL [4 bars]

※ Be careful of hot water splashing if pressed too strongly

With cordless dispensing, and before the water boils, there are only two speeds



- ※1 Full water volume may not be indicated if dispensed frequently.
- Indication lights off and cannot dispense hot water after 8-10 hours even if not dispensed.

Automatically locked in 10 seconds after dispensing is finished.

Charging battery indicator. (for cordless dispensing)

Guideline for dispensing volume

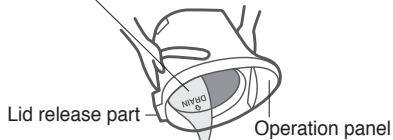
Battery charge volume	Dispensing volume
	Approx. 3L or more (4.0L type) Almost full volume (3.0L types) ※ 1
	1.5L or less

Water temperature falls about 194°F(90°C) in 3 hours after boiling. (3.0L type) at room temperature 68°F(20°C)

※ Temperature falls quicker if water volume is less.

When the unit is not in use

Unplug, and remove the lid. Pour out any remaining hot water slowly via the **DRAIN mark.**



⚠ Cautions

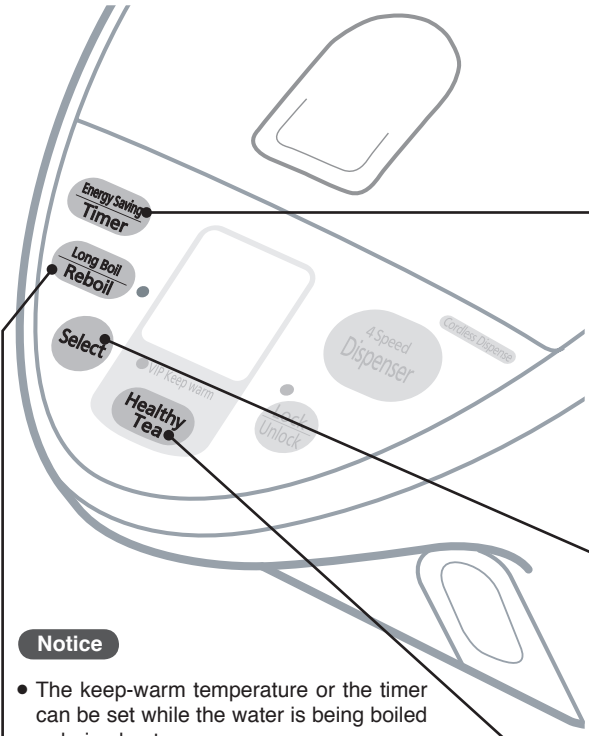
- Do not pour out water too quickly. If water is splashed over lid release section or operation panel, it may cause a malfunction.
- Do not leave water standing in the container. It may cause the container to corrode or smell.

Convenient use methods

Timer

Energy Saving

Convenient use methods



When the unit will not be used for a short time, such as when you go out for a day...

Setting the timer

- While setting the timer, the electrification of heater stops.

Save Energy Setting

- Power is saved automatically by only boiling during dispensing hours and cutting the heater at all other times.
- This is recommended if dispense time is regularly fixed.

Keep-warm Function

- It is ideal to use 180 keep-warm for making green tea.
- Energy can be saved if keep-warm temperature is lower.
- Approx. 176°F(80°C) of water is the most suitable for natural leaf tea.

Notice

- The keep-warm temperature or the timer can be set while the water is being boiled or being kept warm.
- After power is restored in the event of a power and display failure, the keep-warm temperature will be automatically set to 190, even if the timer or the "208" or "180" keep-warm function was previously selected.

Reboil

- It is ideal to use boiling water for making coffee / green tea / instant cup noodles etc.

Time required for the reboil procedure
 From 208 keep-warm : approx. 4-5 min.
 From 190 keep-warm : approx. 6-7 min.
 From 180 keep-warm : approx. 8.5-11 min.
 (Amount of water: Maximum)
 (Room temperature: 68°F(20°C))

Press the **Long Boil Reboil** key to reboil water that is being kept warm.



After a few minutes, water will be boiled.

- The keep-warm temperature setting is left unchanged.

Make the water optimal for tea. (Healthy tea mode)



Keep-warm Function

Reboil

Healthy Tea

When the water will be boiled 8 hours later

8h

Remaining time will be indicated on 1 hour basis.

To cancel the timer press the **Energy Saving Timer** key again

8 hours later, timer will go off and water starts boiling

When the water is brought up to boiling temperature, keep-warm at the settled temperature.

If set up "Energy saving"



Boiling started before dispensing time and kept at preset temperature.



"OFF" is displayed when not dispensed.

"OFF" lights off.

Caution

While Energy saving is set, boiling starts automatically at dispensing time. Circuit breaker may be tripped if used together with other equipment in a same line.

Each time the **Energy Saving Timer** key is pressed the light will shift to the next choice.

4h → 6h → 8h → 10h
 ↑ Cancel ← Energy saving
 (Will return to the temperature indication)

Each time the **Select** key is pressed, "▲" mark will shift to the next choice and change the keep-warm temperature.

Cleaning 180 190 208
 ▲ ← ← ← ▲ → → → ▲

Cleaning 180 190 208

▲
190

Time required to reach the settled keep-warm temperature

190 → 180 keep-warm : approx. 2-4 hour
 208 → 190 keep-warm : approx. 0.5-2.5 hour
 (Amount of water: Maximum
 Room temperature: 68°F(20°C)
 Previous keep-warm setting: 190)

After a short time, water will be kept warm at approx. 176°F(80°C)

Press **Healthy Tea**

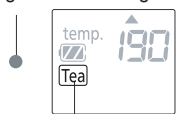


For notification when boiled

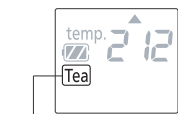
(Setting of keep warm temperature does not vary.)

beep beep
beep beep

Long Boil/Reboil: Light on



Blink



Light on
● VIP Keep-warm

Time for boiling

After filled water : approx. 32 - 38 min.
 From 208 keep warm : approx. 13 - 14 min.
 From 190 keep warm : approx. 16.5 - 17.5 min.
 From 180 keep warm : approx. 18.5 - 20.5 min.

(Amount of water: Maximum
 Room temperature: 68°F(20°C))

Notice

Setting is erased when water is added while **Tea** lights on. (**Tea** lights off)
 Setting will be erased when **Energy Saving Timer**, **Long Boil/Reboil** and **Healthy Tea** tea buttons are pressed while **Tea** blinks.

Caution

A lot of steam may occasionally be released

Care & Cleaning

Daily Maintenance

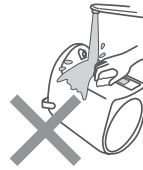
Clean with Citric Acid

⚠ Cautions Before cleaning, be sure to disconnect the plug from outlet, dispense water and allow the unit to cool .

Main unit and lid

Clean with a damp, well-wrung cloth.

- Do not wet or soak the main unit in water. If water enters the main unit from the bottom or from the dispensing spout, it can get into the electrical components in the main unit and may cause a malfunction.
- Do not use detergents. (They may leave an odor.)
- Do not use benzine or thinner. (They may damage the surface.)



Inner container

Clean with a wet sponge.

- Do not use abrasives such as polishing powder, a scrub brush or a nylon brush. They may damage the fluororesin finish of the inner container.



About "Scale"

While you are using this unit, minerals contained in the water (like calcium) can get stuck on the inner container or on the mesh filter. This is called "scale", and it is harmless.

- Milky-white gritty surface (caused by calcium)
- White or glittering floating material (crystals of minerals)
- Discoloration in the finish like dark brown, gray, or green areas (metallic ion formed on the fluororesin covering)

This is not discoloration or corrosion of the inner container itself, nor is it flakes from the fluororesin covering.



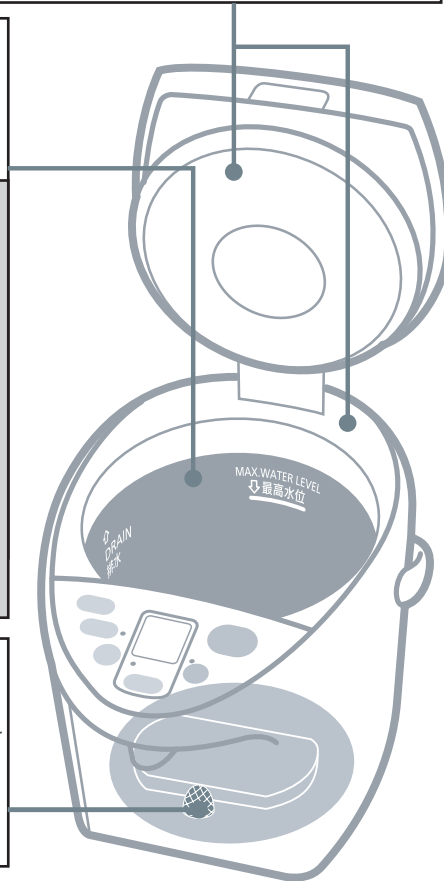
Clean the inner container using citric acid. (See P.21)

Mesh filter

Clean the filter with a brush.

When filter is clogged, water does not flow smoothly.

- * After cleaning the filter, be sure to reattach it to the inner container.



Before storing the unit

- Dry it thoroughly.
- Put it into a plastic bag and seal the bag.

Removing scale. (Once every two or three months)

The citric acid is available from an authorized dealer. (Model No: SAN-80N)

* Follow the directions for cleaning printed on the citric acid package.

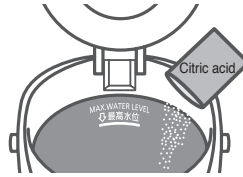
* Since the citric acid used for cleaning is a food additive, it is harmless to humans.

How to clean with citric acid

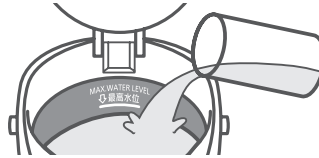
1 Make sure that the mesh filter is attached to the container.

2 Put citric acid in the inner container.

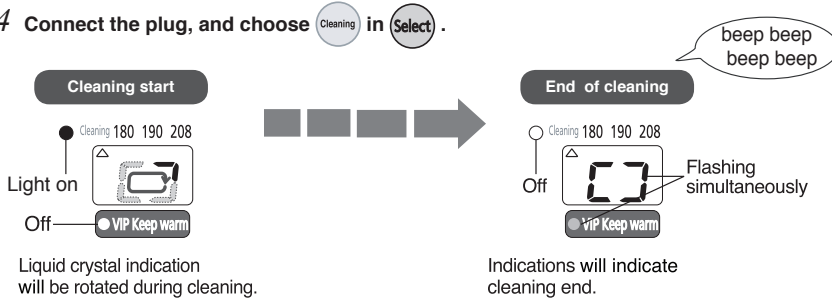
- Amount of citric acid to be used at one time:
80 g (two packages) or seven level tablespoons.



3 Add water to the maximum water level mark, and mix the citric acid and water well. Close the lid.



4 Connect the plug, and choose **Cleaning** in **Select**.



5 Unplug, remove the lid and empty the hot water via the “DRAIN” mark.

6 Refill with water and boil it to remove the smell of the citric acid or lemons. Then throw the hot water away in the same manner as 5.

- To remove any discoloration from the area above the maximum water level, rub the inside lightly with a wet non-abrasive sponge.
- If the discoloration cannot be removed by rubbing, clean the inner container several times using citric acid or lemons.
- When washed without removing charcoal filter, wash the active charcoal filter, fix it in the inner container and throw out the initial boiled water before use.

⚠ Cautions

- Make sure to only use citric acid for thermo pot washing.
- Do not fill with water above maximum water level.
- Fill the container only with tap water (do not fill with hot water). Hot water may spout out causing burns.

Troubleshooting

Before calling a service supplier,
please check the following possible causes/solutions.

If...	Possible cause	Solution
White or glittering flakes floating in the hot water.	<ul style="list-style-type: none"> The cause of this is "scale". (See P.20) It is not flakes of fluororesin. * Water with a large content of minerals in it such as mineral water or ionised water, is more likely to cause a scale or white layer in the hot water. 	<ul style="list-style-type: none"> Clean the inner container with a wet sponge. (See P.20) If the "scale" still remains, clean with citric acid. (See P.21)
Boiling sounds become louder.	<ul style="list-style-type: none"> When "scale" has adhered, boiling sounds become louder. 	
Hot water has odors of chlorine.	<ul style="list-style-type: none"> Odors of chlorine remain depending on the amount of chlorine in tap water. 	<ul style="list-style-type: none"> Press the "Long Boil/Reboil" key to reduce the chlorine. (See P.16)
Hot water has an unpleasant odor.	<ul style="list-style-type: none"> When the unit is new, resin used in the manufacturing may give off a mild odor. This will disappear with use. If the unit is placed on surfaces such as a vinyl sheet, the odor may be carried over into the water. 	
Hot water comes out by itself.	<ul style="list-style-type: none"> Water has been added above maximum water level. 	<ul style="list-style-type: none"> Lower the water level.
Hot water does not flow out smoothly.	<ul style="list-style-type: none"> The mesh filter may be clogged with "scale". (See P.20) 	<ul style="list-style-type: none"> Clean the filter with a brush. If the "scale" cannot be removed, replace the filter. (See P.23)
Hot water does not dispense.	<ul style="list-style-type: none"> The automatic lock has been engaged. 	<ul style="list-style-type: none"> Press the "Lock/Unlock" key.
Lamp blinks while buzzer sounds (Power supply stops) <div style="margin-top: 10px;"> </div>	No-water boiling prevention function <ul style="list-style-type: none"> To prevent failure by overheating, this is activated when no water remains. Is water filled higher than water supply level ? Is lid left open when water is filled ? 	<ul style="list-style-type: none"> Fill the water higher than water supply level, close the lid and press .
	<ul style="list-style-type: none"> It may light on: <ul style="list-style-type: none"> when hot water is added. depending on filling method of water. 	<ul style="list-style-type: none"> Press .
	<ul style="list-style-type: none"> Is citric acid settled at the bottom of container while citric acid washing ? 	<ul style="list-style-type: none"> Once plug is disconnected, mix with chopsticks and wash after citric acid is distributed. (See P.21)


If boiled empty, odor is caused or the color of fluorine resin changes.

The unit doesn't turn on .

- You poured in water directly from a tap.
- You put the unit on the sink.
- You turned the unit upside down with its bottom wet.
- You washed the unit in water.

• If the electric components get wet, the unit must be repaired. Contact the store where you purchased the unit for repair.

- If the problem cannot be resolved, or if you think something is still wrong with the unit, disconnect the plug, reconnect after 30 seconds and operate it again.
- Inside lid may turn yellow, but operation will not be affected.
- "Clickety-clack" sound caused when open and close the lid is the sound caused by the valve swing to prevent the hot water run off.
- Outside body becomes 113°F(45°C) while warm keep if the room temperature is high.

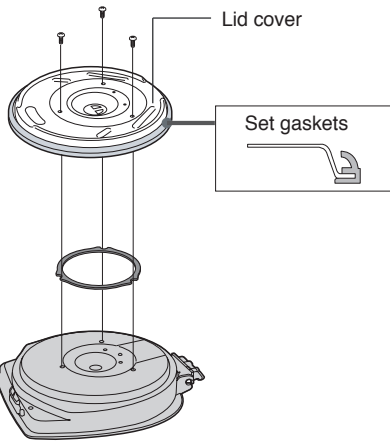
The indicator lights flash alternately and displays .

• This is a malfunction of the sensor. Contact the retailer where you purchased the unit.

Replacement of Parts

Rubber gasket set

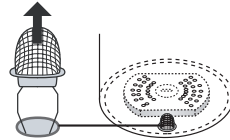
Replace gaskets if they crack, lose their pliancy or, for any other reasons which allow steam to escape from between the container and the lid.



Remove lid, unscrew 3 tapping screws and remove the lid cover.
Exchange the gaskets and then place the lid cover back and secure with the tapping screws.

Mesh filter

Replace the filter if foreign materials which clog the filter cannot be removed even after you scrub with a cleaning brush, etc.



Consumable parts are available from an authorized dealer.

Part name	Part No.
Rubber gasket set	APH65-613-0S
Mesh filter	APB97-480-0U

Specifications

		NC-HU401P	NC-HU301P
Power		120V a.c.	
Power consumption		925 W	
Power consumption while keep warm *1 (per hour)	208 warm keeping	21 Wh	20 Wh
	190 warm keeping	18 Wh	17 Wh
	180 warm keeping	15 Wh	14 Wh
Dimensions (approx.) (where handle is turned.)	Width	9.6 in (24.5 cm)	9.6 in (24.5 cm)
	Depth	12.8 in (32.6 cm)	12.8 in (32.6 cm)
	Height	13.3 in (33.8 cm)	11.3 in (28.9 cm)
Weight (approx.)		7.3 lb (3.3 kg)	6.8 lb (3.1 kg)
Rated capacity		4.2 qt (4.0 L)	3.2 qt (3.0 L)
Cord length		39.4 in (1.0 m)	
Motor pump		Power consumption 1.5 W/Rated time 3 min.	
Overheating prevention unit		Thermal fuse	
Boiling time *2 (approx.)		29.0 min.	23.0 min.
Cleaning time with citric acid		42.0 min.	36.0 min.

*1 : Full of water, where room temperature is 68°F(20°C).

*2 : Full of water, where room and water temperature are 68°F(20°C).

- Prescribed performance may not be maintained in particular areas such as highland or extremely cold region.
- Drain water if not used such as during winter. Remaining water may freeze and damage parts.

規格

		NC-HU401P	NC-HU301P
電源		交流 120伏	
耗電量		925瓦	
保溫 *1 時的耗電量 (每小時)	208 保溫	21 瓦 / 時	20 瓦 / 時
	190 保溫	18 瓦 / 時	17 瓦 / 時
	180 保溫	15 瓦 / 時	14 瓦 / 時
尺寸(大約) (轉動把手的地方。)	寬	9.6" (24.5 厘米)	9.6" (24.5 厘米)
	深	12.8" (32.6 厘米)	12.8" (32.6 厘米)
	高	13.3" (33.8 厘米)	11.3" (28.9 厘米)
重量(大約)		約7.3 英鎊 (3.3 公斤)	約6.8 英鎊 (3.1 公斤)
額定容量		約4.2 誇脫 (4.0 公升)	約3.2 誇脫 (3.0 公升)
電線長度		39.4" (1.0 米)	
電動泵		耗電量1.5 瓦/額定時間3分鐘	
過熱保護組件		熱熔絲	
煮沸時間 *2 (大約)		29.0 分鐘	23.0 分鐘
使用檸檬酸的清理時間		42.0 分鐘	36.0 分鐘

*1 : 68°F(20°C) 室溫以下盛滿水。

*2 : 68°F(20°C) 室溫的水溫,盛滿水。

- 所描述的性能可能無法在高地或極度寒冷等特定地區保持。
- 沒有使用時,例如在冬季時把水排出。請記住,水可能會結冰和損壞零件。

Spécifications

		NC-HU401P	NC-HU301P
Alimentation		120V a.c.	
Consommation		925 W	
Consommation électrique pendant le maintien au chaud *1 (par heure)	Maintien au chaud à 208	21 Wh	20 Wh
	Maintien au chaud à 190	18 Wh	17 Wh
	Maintien au chaud à 180	15 Wh	14 Wh
Dimensions (env.) (où la poignée est tournée)	Largeur	24,5 cm (9,6 po)	24,5 cm (9,6 po)
	Profondeur	32,6 cm (12,8 po)	32,6 cm (12,8 po)
	Hauteur	33,8 cm (13,3 po)	28,9 cm (11,3 po)
Poids (env.)		3,3 kg (7,3 lb)	3,1 kg (6,8 lb)
Capacité nominale		4,0 L (4,2 qt)	3,0 L (3,2 qt)
Longueur du cordon		1,0 m (39,4 po)	
Pompe motrice		Consommation électrique 1,5 W / temps nominal de 3 min.	
Unité de protection contre la surchauffe		Fusible thermique	
Temps d'ébullition *2 (environ)		29,0 min.	23,0 min.
Temps de nettoyage avec de l'acide citrique		42,0 min.	36,0 min.

*1 : Rempli d'eau, où la température ambiante est de 68°F (20°C).

*2 : Rempli d'eau, où la température ambiante et de l'eau est de 68°F (20°C).

- Les caractéristiques indiquées peuvent être altérées dans des régions particulières telles qu'en haute altitude ou dans un froid intense.
- Videz l'eau si elle n'est pas utilisée comme en hiver par exemple. L'eau restante peut geler et endommager les pièces.

Panasonic Home Appliances (Thailand) Co., Ltd.

USA : <http://www.panasonic.com>
CANADA : <http://www.panasonic.ca>

PZ05A6281
PHAT0810-1