

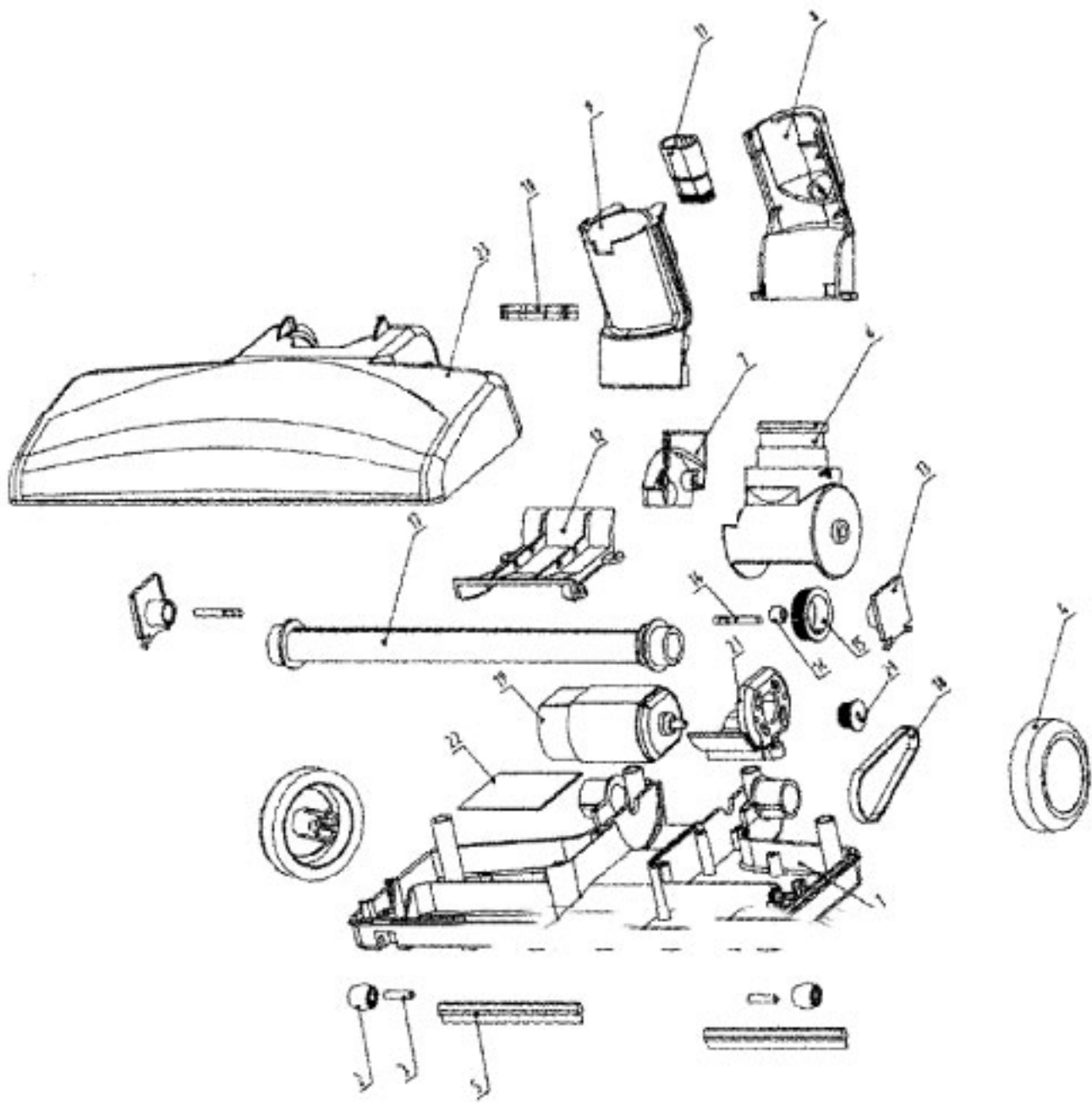
Model Number: S2220---

BOM/Serial #: S2220---

Graphic Title: MAINHOUSING, HOSE, MOTORHOUSING

| Image | Key | Part Number | Description                      | Substitution | Qty. |
|-------|-----|-------------|----------------------------------|--------------|------|
| 1     | 1   | 59136060    | UPPER HDLE-S2200                 |              | 1    |
| 1     | 1   | 59136115    | Handle-AG-S2201                  |              | 1    |
| 1     | 1   | 59136161    | Handle Assm-S2220                |              | 1    |
| 1     | 2   | -----       | NOT REQUIRED PART OR SEE NOTE    |              | 1    |
| 1     | 3   | 59136011    | CORD HOOK-S2200                  |              | 1    |
| 1     | 3   | 59136103    | Cord Hook-AG-S2201               |              | 1    |
| 1     | 3   | 59136152    | Cord Hook-S2220                  |              | 1    |
| 1     | 4   | 59136108    | R Air Outlet Grid                |              | 1    |
| 1     | 4   | 59136155    | Air Outlet Grid-R                |              | 1    |
| 1     | 4   | 59136009    | RIGHT AIR OUTLET GRID            |              | 1    |
| 1     | 5   | 59136022    | AIR OUTLET FILTER-S2             |              | 1    |
| 1     | 6   | 59136052    | PWR CORD W/PROTECTOR             |              | 1    |
| 1     | 7   | -----       | NOT REQUIRED PART OR SEE NOTE    |              | 1    |
| 1     | 8   | 59136107    | L Air Outlet Grid                |              | 1    |
| 1     | 8   | 59136156    | Air Outlet Grid-L                |              | 1    |
| 1     | 8   | 59136010    | LEFT AIR OUTLET GRID             |              | 1    |
| 1     | 9   | 59136158    | Fr Cover - S2220                 |              | 1    |
| 1     | 9   | 59136154    | Rear Cvr-Lwr-C <sup>G</sup> GRID |              | 1    |
| 1     | 9   | 59136114    | Middle Hsg-S2201                 |              | 1    |
| 1     | 9   | 59136112    | Front Cover-S2201                |              | 1    |
| 1     | 9   | 59136006    | PCB/Switch/Noz Wirin             |              | 1    |
| 1     | 9   | 59136159    | Middle Hsg-S2220                 |              | 1    |
| 1     | 9   | 59136162    | Power Nozzle-S2220               |              | 1    |
| 1     | 9   | 59136105    | Rear Cover-Lwr Hdl               |              | 1    |
| 1     | 9   | 59136059    | FINGER BOLT-UPP HDL              |              | 1    |
| 1     | 9   | 59136064    | Owner Manual-S2220               |              | 1    |
| 1     | 10  | 59136035    | PRINTED CIRCUIT BOARD            |              | 1    |
| 1     | 11  | 59136057    | WASHERS-S2200                    |              | 1    |
| 1     | 12  | 59136015    | SCREW                            |              | 1    |
| 1     | 13  | 59136015    | SCREW                            |              | 1    |
| 1     | 14  | 59136013    | MTR FIX RING/SMALL               |              | 1    |
| 1     | 15  | 59136024    | MTR SOUND INSULATION             |              | 1    |
| 1     | 16  | 59136012    | MTR SEAL/CHAMBER SEA             |              | 1    |
| 1     | 17  | 59136061    | PWR CORD FIXING BRD              |              | 1    |
| 1     | 18  | 59136015    | SCREW                            |              | 1    |

| Image | Key | Part Number | Description                   | Substitution | Qty. |
|-------|-----|-------------|-------------------------------|--------------|------|
| 1     | 19  | 59136051    | POWER CORD PROT               |              | 1    |
| 1     | 20  | 59136023    | MOTOR-S2200                   |              | 1    |
| 1     | 21  | 59136055    | PRIMARY BAG FILTER            |              | 1    |
| 1     | 22  | 59136056    | FRT COVER-S2200               |              | 1    |
| 1     | 23  | 59136015    | SCREW                         |              | 1    |
| 1     | 24  | 59136054    | DUST BIN ASSY-S2200           |              | 1    |
| 1     | 24  | 59136109    | Finger Bolt-AG                |              | 1    |
| 1     | 24  | 59136157    | Finger Bolt-S2220             |              | 1    |
| 1     | 25  | -----       | NOT REQUIRED PART OR SEE NOTE |              | 1    |
| 1     | 26  | -----       | NOT REQUIRED PART OR SEE NOTE |              | 1    |
| 1     | 27  | -----       | NOT REQUIRED PART OR SEE NOTE |              | 1    |
| 1     | 28  | 59136014    | MOTOR SEAL - S2200            |              | 1    |
| 1     | 29  | 59136058    | MIDDLE HSG W/GAS-S22          |              | 1    |
| 1     | 30  | 59136007    | REAR COVER/LOWER HANDLE       |              | 1    |
| 1     | 31  | 59136015    | SCREW                         |              | 1    |
| 1     | 32  | 59136045    | FRT SEALING/DIRT CUP          |              | 1    |
| 1     | 33  | 59136049    | FLR NOZZLE BRUSH ONLY         |              | 1    |
| 1     | 33  | 59136026    | FLR NOZZLE COMP-S220          |              | 1    |
| 1     | 40  | 59136028    | OWNERS MANUAL-S2200           |              | 1    |



**Model Number: S2220---**  
**BOM/Serial #: S2220---**  
**Graphic Title: POWEREDNOZZLE**

| Image | Key | Part Number | Description                   | Substitution | Qty. |
|-------|-----|-------------|-------------------------------|--------------|------|
| 1     | 1   | 59136166    | Base Assem-S2220              |              | 1    |
| 1     | 1   | 59136162    | Power Nozzle-S2220            |              | 1    |
| 1     | 2   | 59136174    | Front Wheel-S2220             |              | 1    |
| 1     | 3   | 59136075    | Front Wheel Shaft             |              | 1    |
| 1     | 4   | ----        | NOT REQUIRED PART OR SEE NOTE |              | 1    |
| 1     | 5   | ----        | NOT REQUIRED PART OR SEE NOTE |              | 1    |
| 1     | 6   | 59136170    | Nozzle Connector              |              | 1    |
| 1     | 7   | ----        | NOT REQUIRED PART OR SEE NOTE |              | 1    |
| 1     | 8   | ----        | NOT REQUIRED PART OR SEE NOTE |              | 1    |
| 1     | 9   | ----        | NOT REQUIRED PART OR SEE NOTE |              | 1    |
| 1     | 10  | ----        | NOT REQUIRED PART OR SEE NOTE |              | 1    |
| 1     | 11  | ----        | NOT REQUIRED PART OR SEE NOTE |              | 1    |
| 1     | 12  | 59136169    | Air Inlet Cover               |              | 1    |
| 1     | 13  | 59136163    | Agitator-S2220                |              | 1    |
| 1     | 14  | ----        | NOT REQUIRED PART OR SEE NOTE |              | 1    |
| 1     | 15  | ----        | NOT REQUIRED PART OR SEE NOTE |              | 1    |
| 1     | 16  | ----        | NOT REQUIRED PART OR SEE NOTE |              | 1    |
| 1     | 17  | ----        | NOT REQUIRED PART OR SEE NOTE |              | 1    |
| 1     | 18  | 59136167    | Belt-S2220                    |              | 1    |
| 1     | 19  | 59136165    | Motor-S2220                   |              | 1    |
| 1     | 20  | ----        | NOT REQUIRED PART OR SEE NOTE |              | 1    |
| 1     | 22  | 59136168    | Motor Fxg Cushion             |              | 1    |
| 1     | 23  | 59136171    | Hood-S2220                    |              | 1    |
| 1     | 24  | 59136172    | Screw-ST3*12                  |              | 1    |
| 1     | 24  | 59136176    | NOZZLE PCB - S2220            |              | 1    |
| 1     | 24  | 59136173    | Screw-PBT3*8                  |              | 1    |