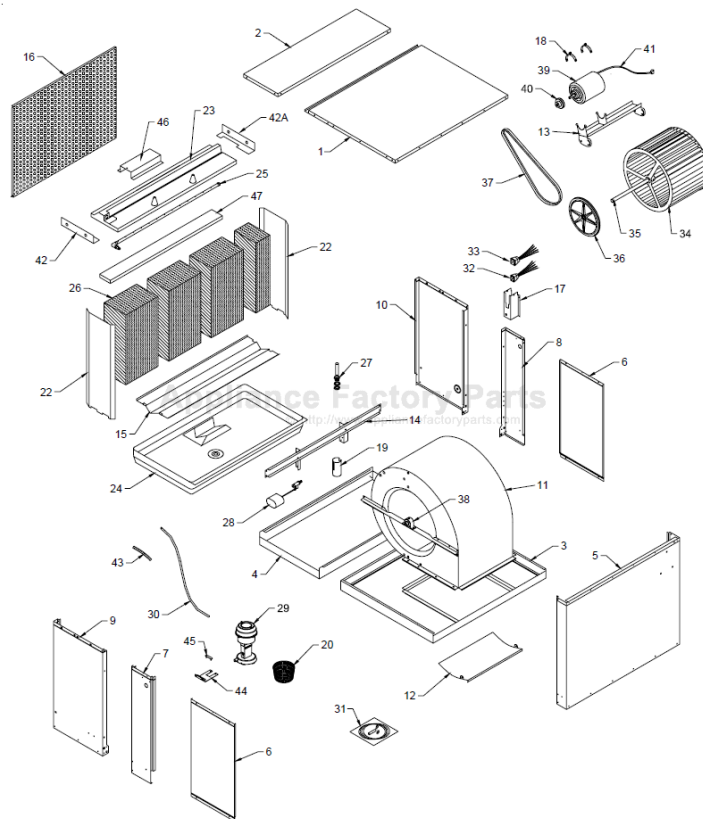


This Owner's Manual is provided and hosted by [Appliance Factory Parts](http://ApplianceFactoryParts.com).



CHAMPION ADA50 Owner's Manual

[Shop genuine replacement parts for CHAMPION ADA50](#)

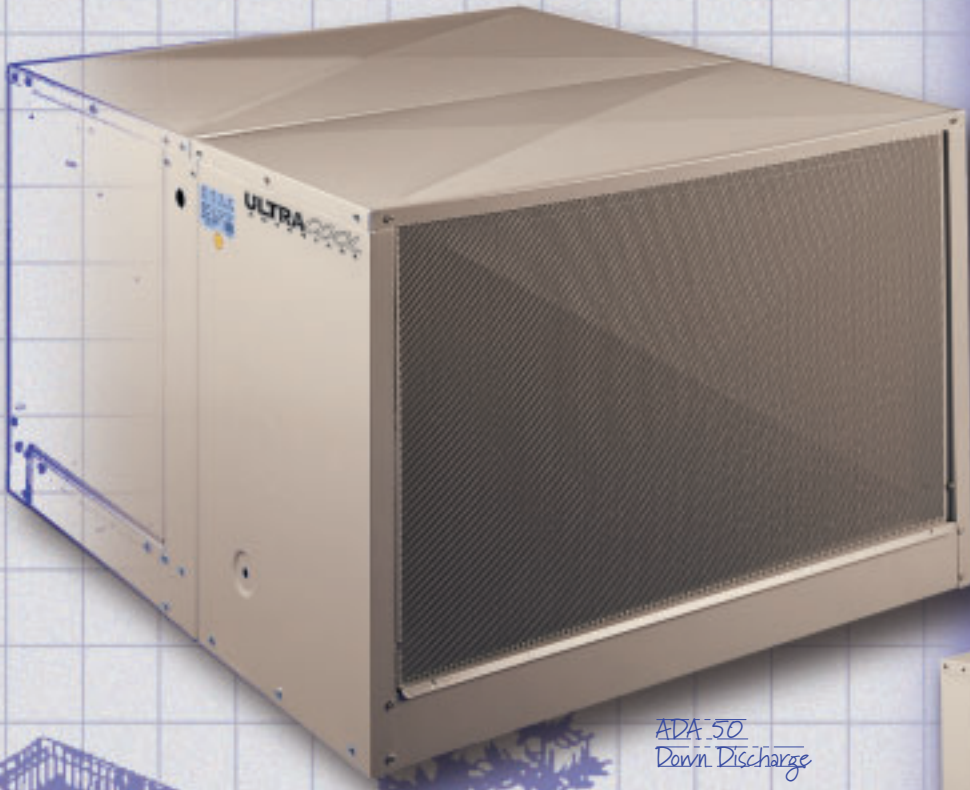


[Find Your CHAMPION Evaporative Cooler Parts - Select From 79 Models](#)

----- Manual continues below -----

A D V A N T A G E

ULTRACOOOL



ADA 50
Down Discharge

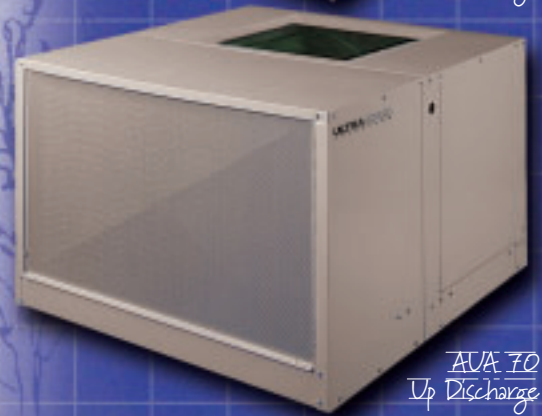
RESIDENTIAL

EVAPORATIVE

AIR COOLERS



ASA 35
Side Discharge

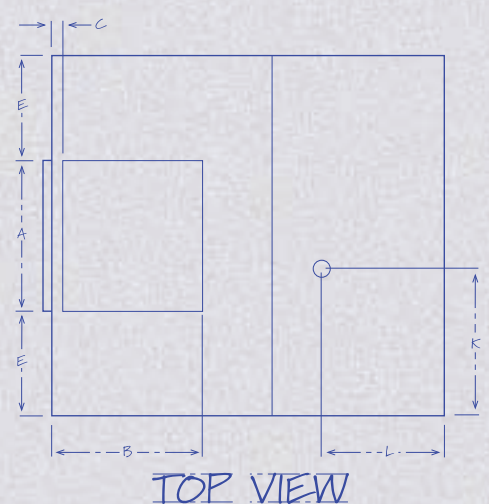
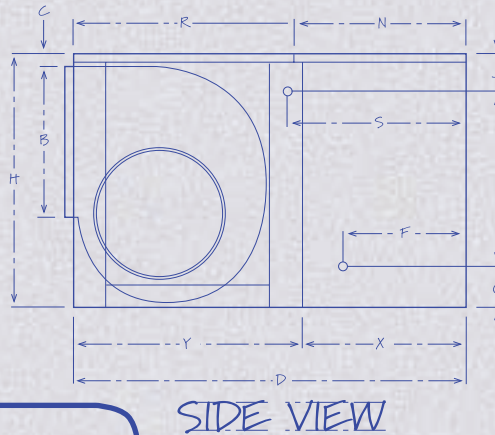
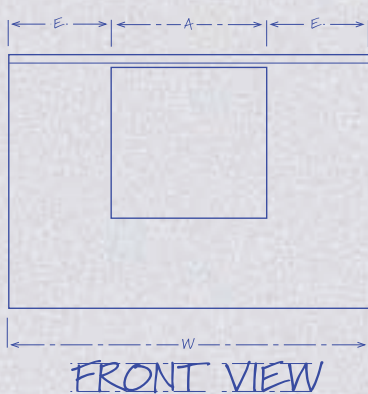
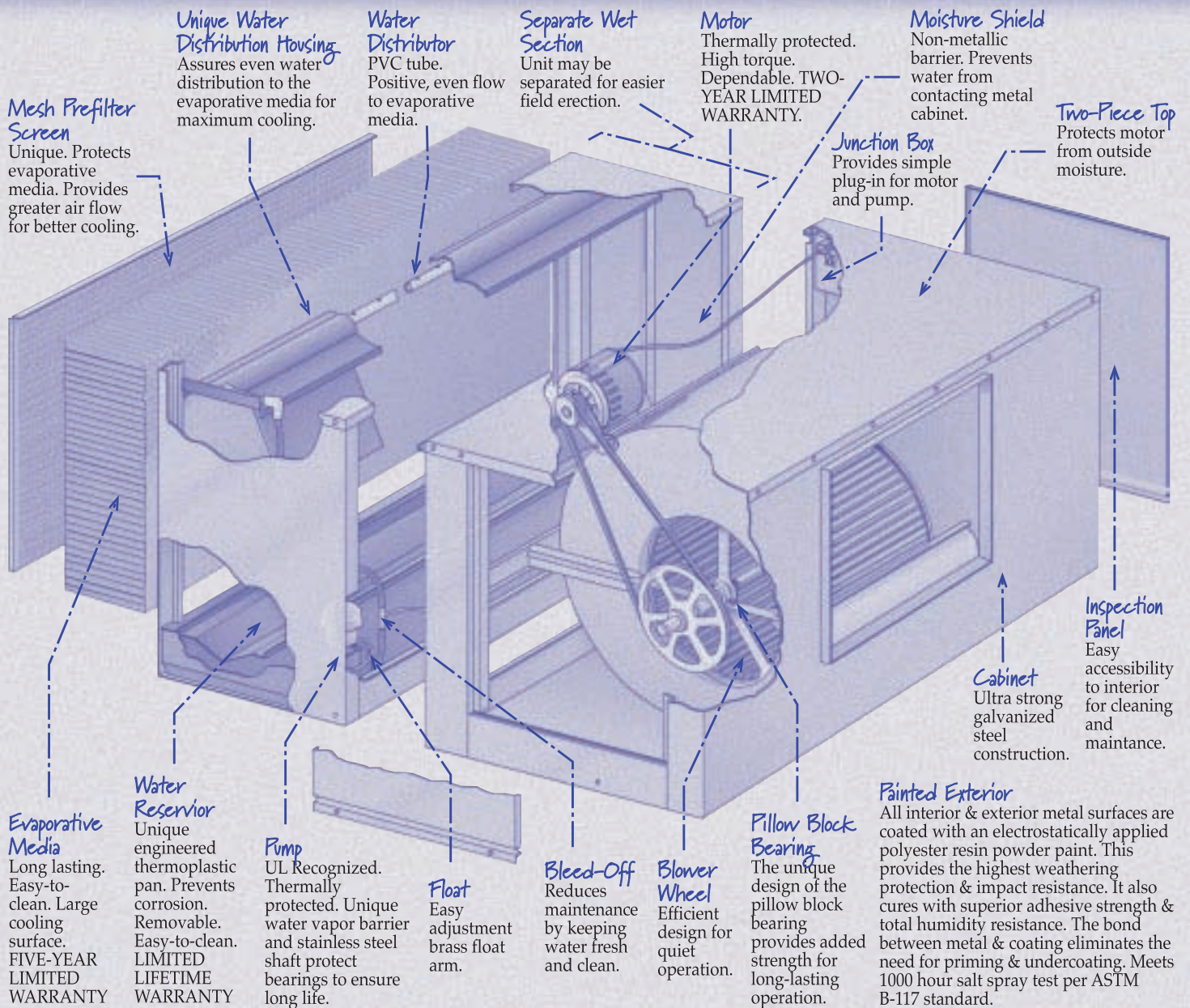


AUA 70
Up Discharge



CHAMPION
COOLER

STANDARD FEATURES



DIMENSIONS

Match letters on illustrations to Cabinet Dimensions in the Specification Tables on next page.

SPECIFICATIONS

CABINET DIMENSIONS*

MODEL NO.	GENERAL DIMENSIONS			DUCT				WATER SERVICE LOCATION		ELECTRICAL SERVICE LOCATION		DRAIN LOCATION		BLOWER WHEEL			BELT LENGTH	WEIGHT		MODULE LENGTH		TOP PAN LENGTH	
				OPENING		LOCATION												OPER.	SHIP.	X	Y	R	N
	H	W	D	A	B	C	E	F	G	S	J	K	L	DIA.	WIDTH	SHAFT							
ADA35 ASA35	22 ⁹ / ₁₆	34	40	13 ⁵ / ₈	13 ³ / ₈	1	10 ³ / ₁₆	14 ⁷ / ₁₆	5 ¹ / ₄	20 ¹ / ₂	3 ⁵ / ₈	17	14 ⁵ / ₈	12 ⁷ / ₈	12 ¹ / ₈	1	43	187	130	17 ¹⁵ / ₁₆	22	-	-
						1 ⁷ / ₈											46						
ADA50 ASA50 AUA50	28	42	45	17 ³ / ₄	17 ³ / ₄	1 ¹ / ₂	12 ¹ / ₈	13	5 ³ / ₄	20 ³ / ₈	3 ⁹ / ₁₆	17	14 ¹ / ₁₆	16	16 ³ / ₄	1	52 ⁺	252	179	18 ¹ / ₄	26 ³ / ₄	25 ⁷ / ₈	19 ¹ / ₁₆
																	57					25 ⁷ / ₈	19 ¹ / ₁₆
																	51					32 ³ / ₁₆	12 ³ / ₄
ADA5012 ASA5012	28	42	49	17 ³ / ₄	17 ³ / ₄	1 ¹ / ₂	12 ¹ / ₈	17	5 ³ / ₄	24 ³ / ₈	3 ⁹ / ₁₆	17	18 ¹ / ₁₆	16	16 ³ / ₄	1	52 ⁺	272	192	22 ¹ / ₄	26 ³ / ₄	25 ⁷ / ₈	23 ¹ / ₁₆
																	57						
ADA70 ASA70 AUA70	34 ⁵ / ₈	42	48	19 ³ / ₄	19 ³ / ₄	1 ¹ / ₂	11 ¹ / ₈	13	5 ³ / ₄	20 ³ / ₈	3 ⁹ / ₁₆	17	14 ¹ / ₁₆	20	16 ³ / ₄	1	64	294	215	18 ¹ / ₄	29 ³ / ₄	28 ⁷ / ₈	19 ¹ / ₁₆
																	67					28 ⁷ / ₈	19 ¹ / ₁₆
																	67					35 ³ / ₁₆	12 ³ / ₄
ADA7012 ASA7012	34 ⁵ / ₈	42	52	19 ³ / ₄	19 ³ / ₄	1 ¹ / ₂	11 ¹ / ₈	17	5 ³ / ₄	24 ³ / ₈	3 ⁹ / ₁₆	17	18 ¹ / ₁₆	20	16 ³ / ₄	1	64	321	235	22 ¹ / ₄	29 ³ / ₄	28 ⁷ / ₈	23 ¹ / ₁₆
																	67						

*All dimensions in inches. † 3/4 H.P. requires a 53" belt.

ELECTRICAL SPECIFICATIONS*

CFM**** INCHES STATIC PRESSURE

MODEL NO.	INDUSTRY STANDARD RATING	H.P.	SPEEDS**	PHASE	VOLTS**	AMPS***	0'	0.1'	0.2'	0.3'	0.4'	0.5'	0.6'
ADA/ASA 35	3000 3500	1/3 1/2	1 OR 2	1	115	8.3 10.9	2022 2315	1871 2178	1738 2061	1607 1947	1470 1834	1311 1714	1107 1581
ADA/ASA/ AUA 50	4000 4400 5000	1/3 1/2 3/4	1 OR 2	1	115	8.3 10.9 14.9	2873 3321 3788	2650 3110 3630	2390 2910 3450	2060 2650 3260	1806 2400 3020	1600 2130 2806	1370 1940 2570
ADA/ASA 5012	4000 4400 5000	1/3 1/2 3/4	1 OR 2	1	115	8.3 10.9 14.9	2750 3149 3606	2566 2993 3472	2323 2803 3317	1997 2564 3135	1629 2266 2918	1313 1944 2661	1039 1648 2379
ADA/ASA/ AUA 70	5400 6000 7000	1/2 3/4 1	1 OR 2	1	115	10.9 14.9 17.1	3987 4564 5024	3750 4350 4820	3510 4130 4630	3270 3940 4450	3055 3730 4280	2610 3580 4100	2210 3180 3900
ADA/ASA 7012	5400 6000 7000	1/2 3/4 1	1 OR 2	1	115	10.9 14.9 17.1	3922 4488 4941	3685 4279 4747	3462 4087 4572	3212 3888 4394	2898 3662 4208	2471 3392 3996	2002 3049 3749

*All dimensions in inches. **Motors shipped separately. ***Blower motor (high speed) and pumps. ****Cubic feet per minute. CFM ratings are based on test data to AMCA (Air Movement and Control Association) standard 210 by an independent AMCA approved laboratory.

OPTIONAL THERMOSTAT ACCESSORY

SELECTING AN ULTRACOOOL COOLER



STANDARD FEATURES

- Large LED readout is easy to read
- Easy 4-wire hook up makes installation quick and simple
- Durable rain-proof control box ensures safety
- Thermostat controlled dump cycle adds convenience
- Dump cycle control is compatible with any pump!
- Two-stage operation provides better comfort and even temperatures
- Easy to program and operate

Contact your local Champion dealer today for more information on why an UltraCool Advantage Evaporative Cooler should be your First Choice. Only Choice.

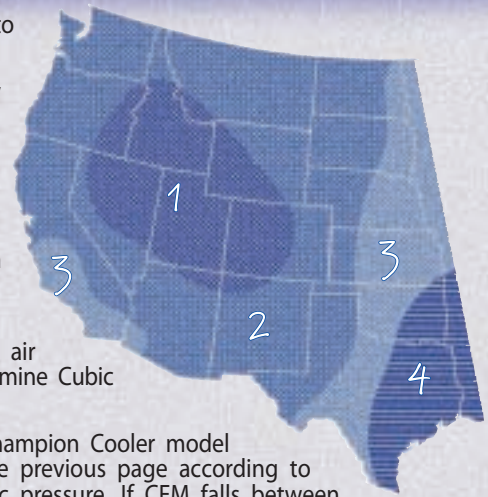
1. Consult zone map to find correct zone.

2. Consult table below to find correct "Minutes per Air Change" for your zone.

3. Determine area to be cooled in cubic feet (building length x width x height).

4. Divide cubic feet (step 3) by minutes per air change (step 2) to determine Cubic Feet per Minute (CFM).

5. Select the correct Champion Cooler model in the data table on the previous page according to CFM and expected static pressure. If CFM falls between models, choose the larger model.



MINUTES PER AIR CHANGE		ZONE			
INTERIOR HEAT LOAD	EXTERIOR HEAT LOAD	1	2	3	4
HIGH	EXPOSED	2	1.5	1.3	.7
HIGH	INSULATED	3	2	1.5	1
NORMAL	EXPOSED	3	2	1.5	1
NORMAL	INSULATED	4	3	2	1.3

• **INTERIOR HEAT LOAD:** High means places with unusual heat sources from hot equipment or processes, crowded conditions, etc. Normal means no unusual heat sources - typical home or office.

• **EXTERIOR HEAT LOAD:** Exposed means walls, roof exposed to sun, poor insulations, etc. Insulated means walls and roof well insulated and/or shaded.

EXAMPLE - A house in Phoenix, AZ, 40 feet long by 30 feet wide with 8-foot ceiling. Well insulated, no unusual heat sources.

1. $30 \times 40 \times 8 = 9,600$ cubic feet

2. Zone 2

3. Minutes per Air Change = 3

4. $9,600 \div 3 = 3,200$ CFM

5. Referring to CFM table inside this brochure, cooler model ADA50 with a 3/4 h.p. motor is indicated, assuming a typical static pressure of .2" W.G.



 Crafted With Pride In The USA

Designed with You in Mind!

CHAMPION COOLERS

5800 Murray, Little Rock, AR 72209 800-643-8341 www.championcooler.com

Catalog No. CUCB-Sept. 2005