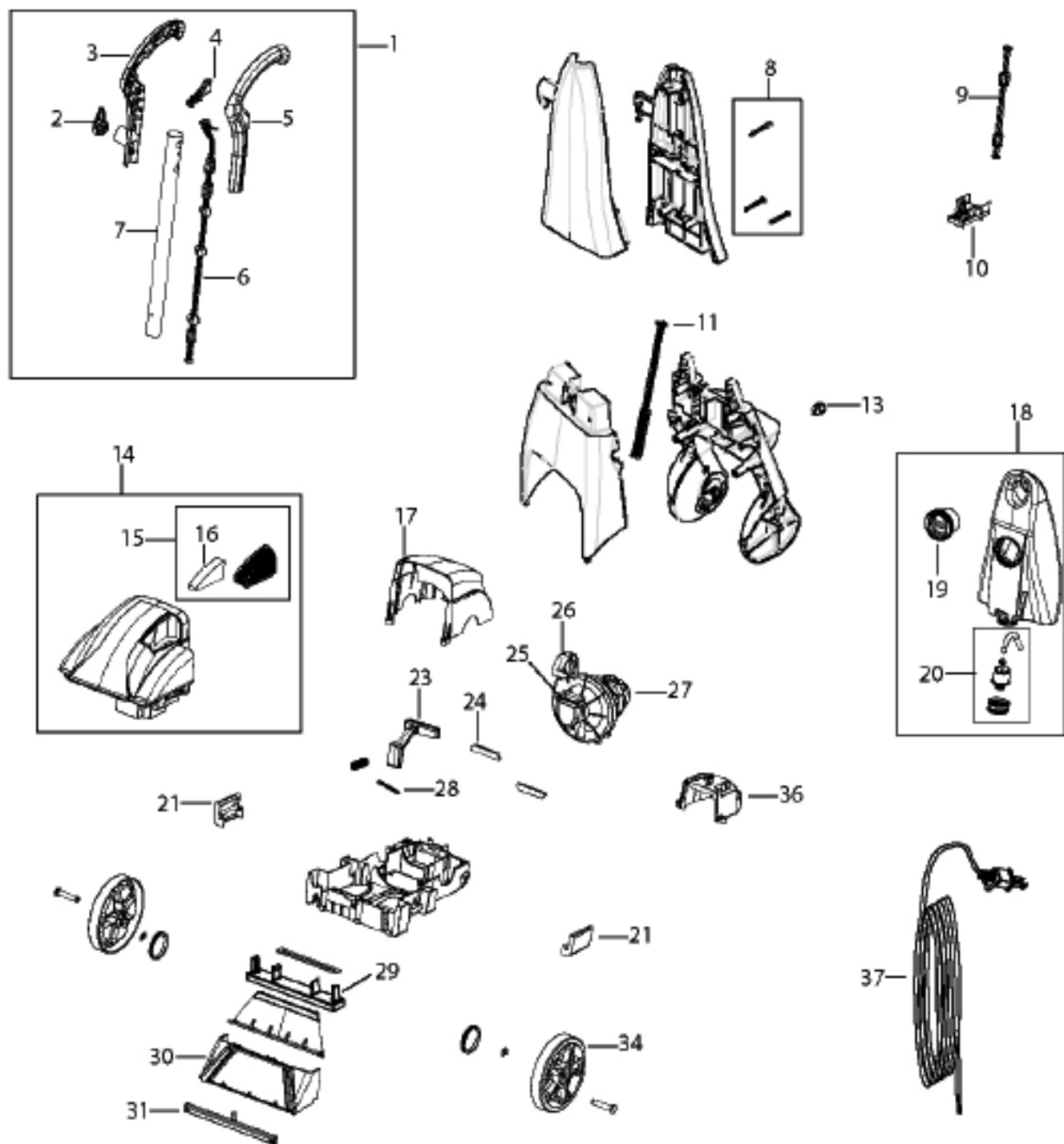


QUICKSTEAMER

Model 1960



Lightweight Deep Cleaner

Quicksteamer 1960 Series

KEY PART NO	DESCRIPTION
1 2035601	HANDLE ASSY W/ CORD WRAP
2 2041107	CORD WRAP
3 2041104	HANDLE - RT SIDE
4 2041103	TRIGGER
5 2041108	HANDLE - LT SIDE
6 2041106	PUSH ROD - UPPER
7 6037806	TUBING
8 2035616	HANDLE SCREW KIT (2+1)
9 2041106	UPPER PUSH ROD
10 2041126	RECEIVER ASSY
11 2035614	PUSH ROD - LOWER
13 2041128	ON/OFF SWITCH
14 6037816	DIRTY WATER TANK - TEAL
14 2035604	DIRTY WATER TANK w/ PANEL & FILTER - DUSK
15 6037823	EXHAUST VENT PANEL W/ FILTER - TEAL
15 2035609	EXHAUST VENT PANEL W/ FILTER - DUSK
16 6037824	FOAM FILTER
17 2041125	REAR COVER
18 6037813	CLEAN WATER TANK - WHITE - 19603
18 2035603	CLEAN WATER TANK - DUSK - 1960W
19 2041112	FORMULA MEASURING CUP
20 2041111	CAP AND INSERT
21 6037820	TANK LATCHES - TWO
23 2041114	DETENT LEVER
24 0106357	REAR MOTOR SUPPORT
25 2041122	MOTOR INTAKE GASKET
26 6037825	MOTOR OUTLET GASKET
27 6037807	COMPLETE MOTOR ASSY
28 2041115	METAL DETENT DOWEL
29 2035602	BRUSH - CROSS ACTION - ORANGE/WHITE
30 6037800	FRONT NOZZLE ASSY
31 2035615	SPRAY BAR - ORANGE
34 6037802	WHEEL
36 2041113	MOTOR COVER
37 6037803	POWER CORD
xx 2035600	USER'S GUIDE