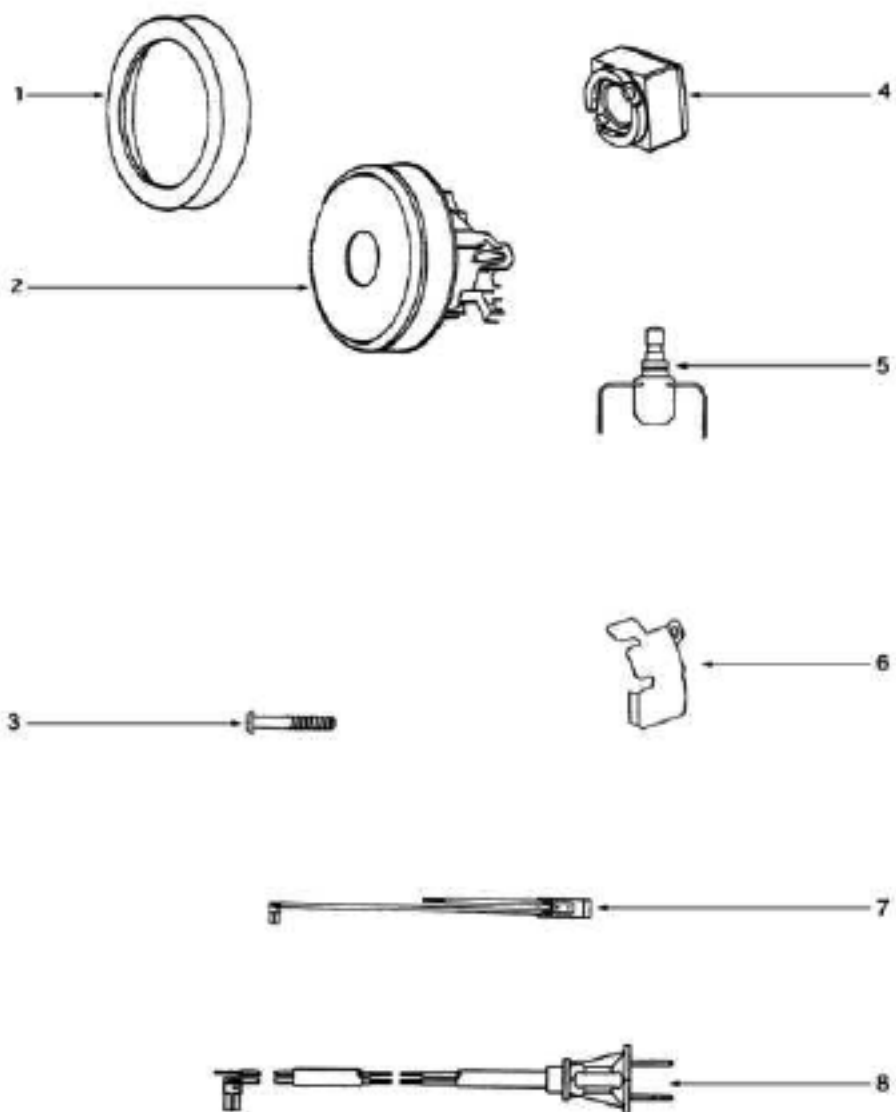


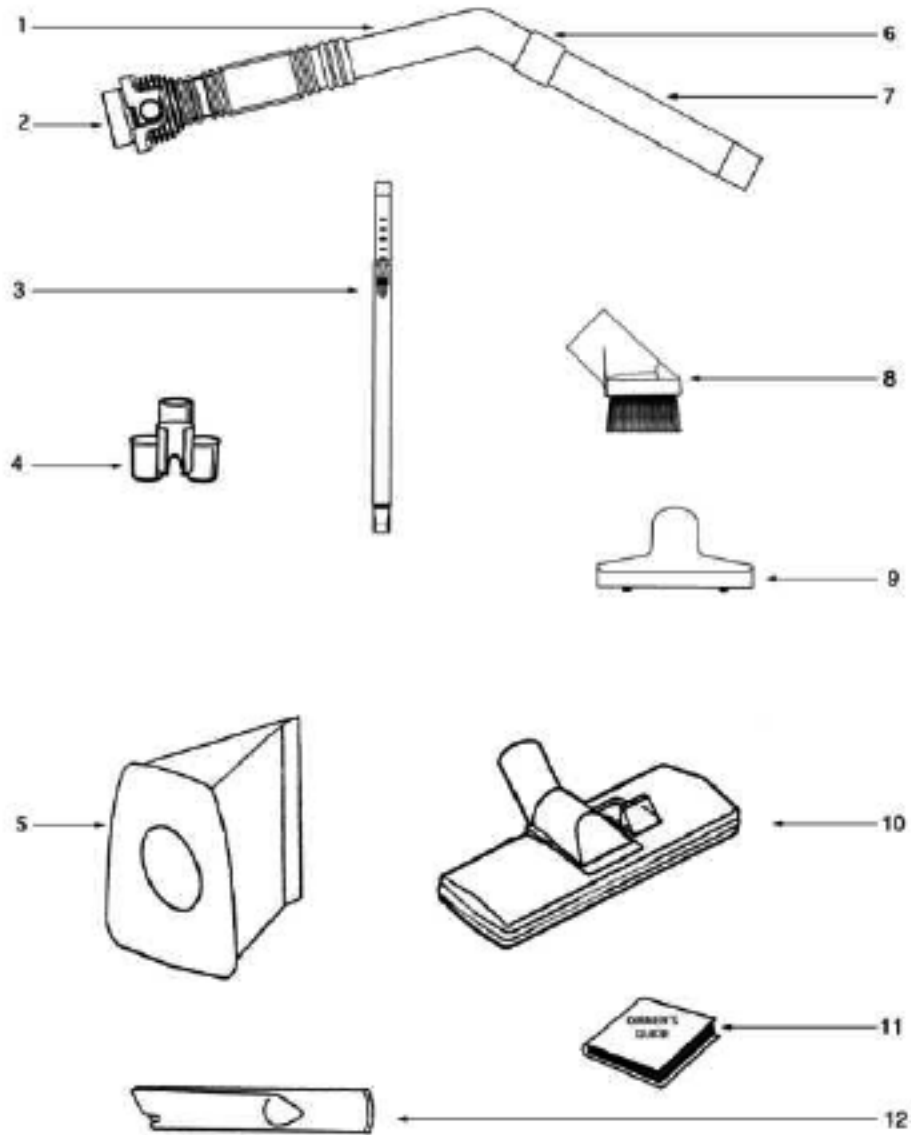
Canister - S3881B-1

| Ref # | Part | Description | Comments | Qty |
|-------|-------------|---------------------------|----------|-----|
| 1 | 60487-26 | HOUSING ASSEMBLY - PACKAG | | |
| 2 | 59046-1 | GASKET - FRONT COVER | | |
| 3 | 38956-1SV | FRONT COVER ASSEMBLY | | |
| 4 | 38805-1 | CASTER ASSEMBLY | | |
| 5 | 37409-1 | WHEEL - CASTER | | |
| 6 | 28008B-3 | REAR HOUSING ASSEMBLY | | |
| 7 | 15409A-119N | WHEEL - REAR | | |
| 8 | 27964-119N | EXTENSION TUBE | | |
| 9 | 38333 | FILTER | | |



Motor - S3881B-1

| Ref # | Part | Description | Comments | Qty |
|-------|----------|---------------------------|----------|-----|
| 1 | 75079 | GASKET - MOTOR MOUNTING | | |
| 2 | 62392 | MOTOR ASSEMBLY - PACKAGED | | |
| 3 | 60610 | SCREW PKG | | |
| 4 | 75027 | BUSHING - MOTOR | | |
| 5 | 28304A-2 | SWITCH - PUSHBUTTON | | |
| 6 | 39028 | SHIELD - WIRE | | |
| 7 | 39408-8 | THERMOSTAT & TERMINAL ASS | | |
| 8 | 39585-10 | SUPPLY CORD & TERMINAL AS | | |



Accessories - S3681B-1

| Ref # | Part | Description | Comments | Qty |
|-------|------------|---------------------------|--------------------|-----|
| 1 | 60289-1 | HOSE ASSEMBLY - CARTONED | | |
| 2 | 15355-119N | COUPLING - HOSE | | |
| 3 | 72953 | STEEL TELESCOPIC WAND SET | | |
| 4 | 54610 | CLIP & TOOL | | |
| 5 | 60295A | PAPER BAG PKG ASSY (3MM) | | |
| 6 | 37653-3 | BLEEDER | | |
| 7 | 26193-3 | CURVED HANDLE ASSEMBLY | | |
| 8 | 60290-1 | DUSTING BRUSH - PACKAGED | | |
| 9 | 38284-3 | UPHOLSTERY NOZZLE ASSEMBL | | |
| 10 | 38702-2 | COMB. FLOOR & WALL BRUSH | | |
| 11 | 75328 | | | |
| 12 | 27237-3 | TOOL - CREVICE | | |
| 13 | 38353 | STRAP & PIN ASSEMBLY | Item not pictured. | |