

This Owner's Manual is provided and hosted by [Appliance Factory Parts](http://www.appliancefactoryparts.com).



PANASONIC MC-CG301 Owner's Manual

[Shop genuine replacement parts for PANASONIC
MC-CG301](#)

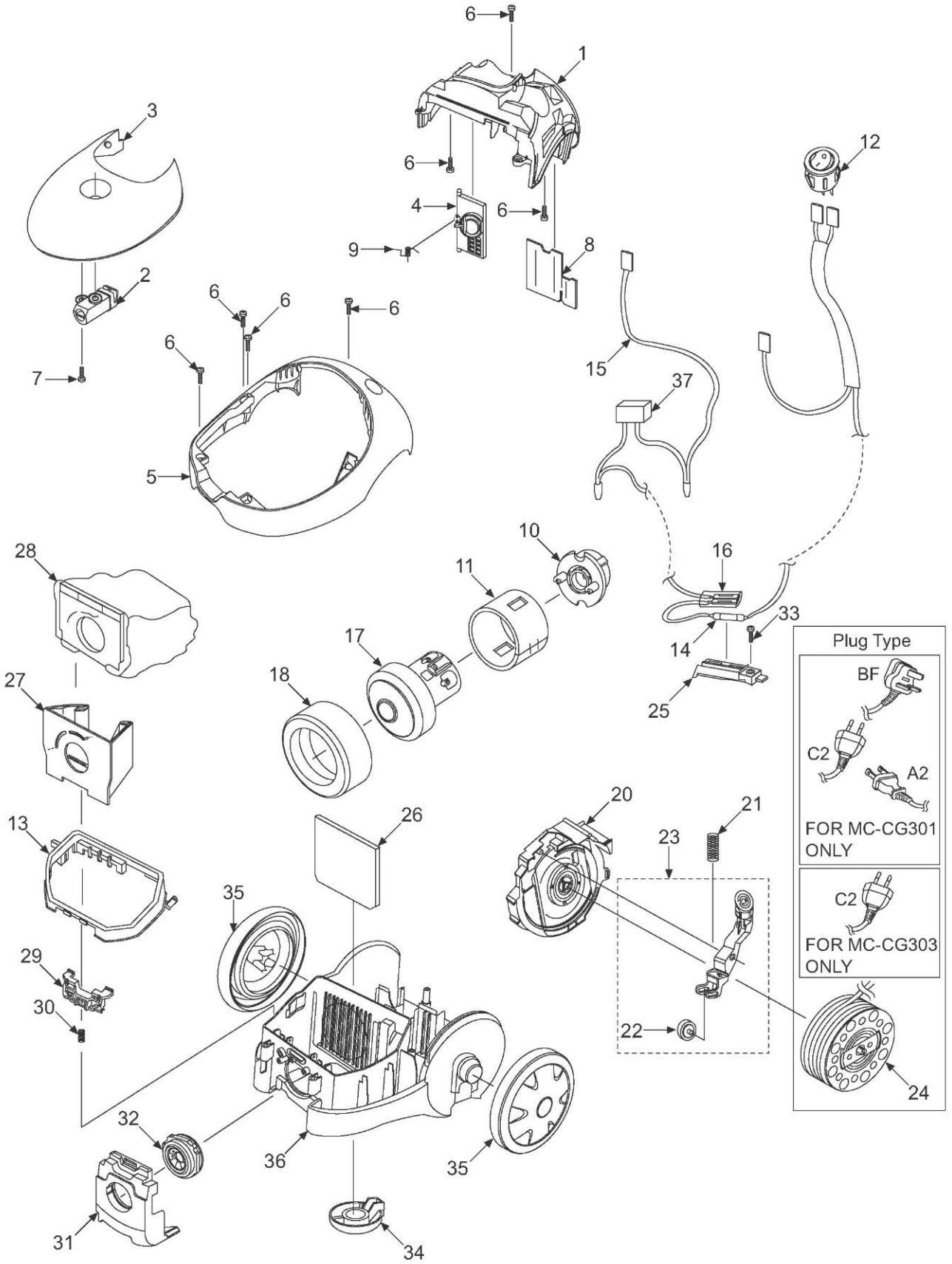


[Find Your PANASONIC Vacuum Cleaner Parts - Select From 605 Models](#)

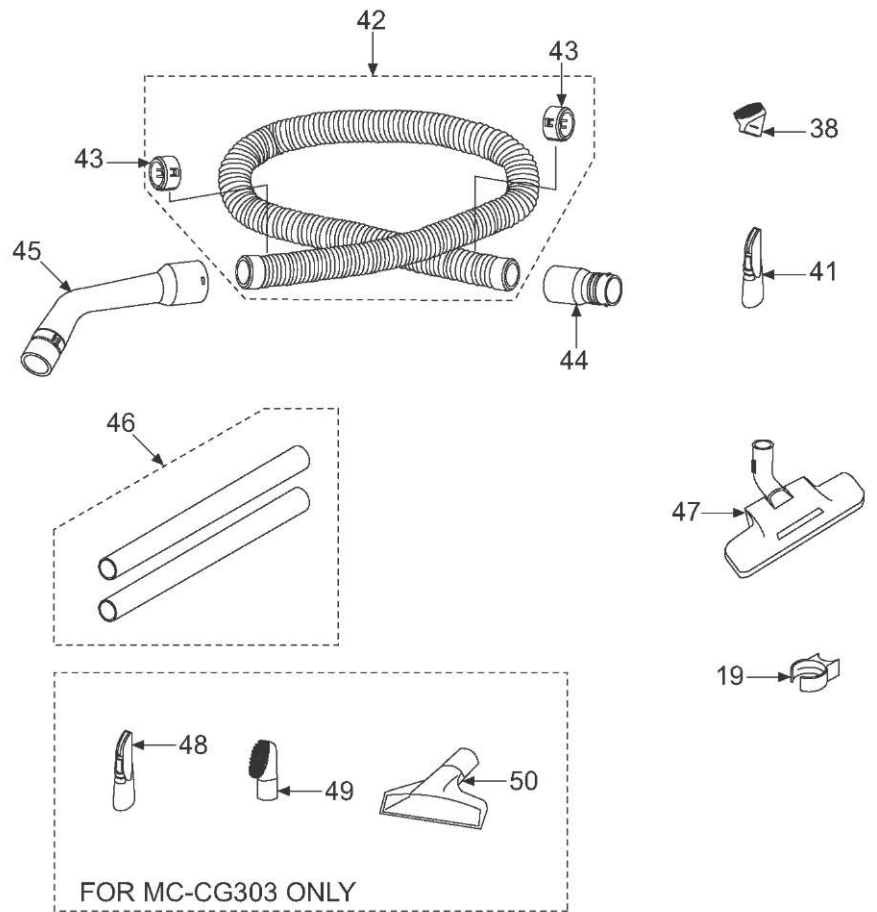
----- Manual continues below -----

8 Exploded View and Replacement Parts List

8.1. Exploded View



8.2. Attachment Exploded View



8.4. Replacement Parts List

Safety	Ref. No.	Part No.	Part Name & Description	Qty	Remarks
			EXPLODED VIEW		
	1	YMV02AAQ0R0	UPPER BODY	1	
	2	YMV98MAR000	INDICATOR UNIT	1	
	3	YMV92L9L000	DUST COVER UNIT	1	
	4	YMV29LAR000	AIR OUTLET COVER	1	
	5	YMV01BAR000	HANDLE	1	
	6	XTN4+16BFJ	PAN TAP SCREW	7	
	7	XTN4+12BFJ	PAN TAP SCREW	1	
	8	YMV30L9L000	OUTLET FILTER	1	
	9	YMC33LDD100	BLOWER COVER SPRING	1	
	10	YMC03FSG000	MOTOR SUPPORT RUBBER REAR	1	
	11	YMV99GAR000	NOISE SUPPRESSOR UNIT	1	
	12	YMV01E9L00U	SWITCH	1	
	13	YMV66KAR000	DUST COVER PACKING	1	
&	14	YMV13WAR000	FUSE	1	
&	15	YMV67VAR000	LEAD WIRE B UNIT	1	
&	16	YMV20WAR000	THERMAL PROTECTOR	1	
	17	YMV92FAR00C	FAN MOTOR UNIT	1	
	18	YMV02FAR000	MOTOR SUPPORT RUBBER FRONT	1	
	19	YMV76P9L000	CREVICE HOLDER	1	MALAY-SIA ONLY (MC-CG301)
&	20	YMV96AAR000	BODY PARTITION UNIT	1	
&	21	YMC71NJW000	BRAKE BUTTON SPRING	1	
&	22	YMC93N6K000	BRAKE UNIT	1	
&	23	YMV94NAR000	BRAKE LEVER UNIT	1	
&	24	YMC99NYX3 0V	CORD REEL UNIT	1	BF - MALAY-SIA AND HONG KONG (MC-CG301)
&	24	YMC99NYX4 00	CORD REEL UNIT	1	C2 - VIET-NAM (MC-CG301)
&	24	YMV99NYX3 0B	CORD REEL UNIT	1	A2 - THAI-LAND (MC-CG301)
A	24	YMV99NAR00S	CORD REEL UNIT	1	C2 - SINGAPORE (MC-CG301)
A	24	YMV99NAR009	CORD REEL UNIT	1	C2 - INDIA (MC-CG303)
	25	YMV29FAQ000	HOLDER	1	
	26	YMC30KAR000	FILTER	1	
	27	P-14005	PAPER BAG	1	MALAY-SIA, HONG KONG AND SINGAPORE (MC-CG301) (PAPER DUST BAG)

Safety	Ref. No.	Part No.	Part Name & Description	Qty	Remarks
	28	YMC99KYX000	CLOTH BAG UNIT	1	VIET-NAM AND THAI-LAND (MC-CG301) (MC-CG303) (CLOTH DUST BAG)
	29	YMC23KLE100	BAG CLAMPER	1	
	30	YMC46HFF000	BAG CLAMPER SPRING	1	
	31	YMV01HAR000	FRONT COVER	1	
	32	YMV50KAR000	VALVE GROMMET	1	
	33	XTN4+10FFJ	PAN TAP SCREW	1	
	34	YMC95C7K16 0	CASTER UNIT	1	
	35	YMV01CAQ000	WHEEL	2	
	36	YMV03AAR000	LOWER BODY	1	
	37	YMV46FAR000	CAPACITOR	1	
	38	YMC88RYX090	DUSTING BRUSH A	1	MALAY-SIA ONLY (MC-CG301)
	41	YMV60RXQ190	CREVICE NOZZLE A	1	(MC-CG3 03)
	41	YMV60R9L000	CREVICE NOZZLE B	1	MALAY-SIA ONLY (MC-CG301)
	42	YMC86QYX090	HOSE UNIT	1	(HOSE ASSEMBLY)
	43	YMC24POR190	HOSE SUPPORTED	2	
	44	YMC02POR190	HOSE CONNECTION PIPE	1	(HOSE CONNECTION WAND)
	45	YMC98P4Y190	CURVE WAND UNIT	1	(CURVED WAND)
	46	YMC99P9L000	EXTENSION WAND ASSY	1	(EXTENSION WAND PLASTIC)
	47	YMV96QAR000	FLOOR NOZZLE UNIT	1	(AIR DUST CATCHER NOZZLE)
	48	YMV60RAR000	CRIVICE TOOL	1	
	49	YMV88R95090	DUST BRUSH UNIT B	1	(DUSTING BRUSH B)
	50	YMC68R86190	UPHOLSTERY NOZZLE	1	
			PACKING		
	P1	YMV61Z9L000	INDIVIDUAL CARTON	1	SINGAPORE, THAI-LAND AND VIET-NAM (MC-CG301)
	P1	YMV61Z9L00V	INDIVIDUAL CARTON	1	MALAY-SIA (MC-CG301)
	P1	YMV61Z9L00H	INDIVIDUAL CARTON	1	HONG KONG (MC-CG301)
	P1	YMV61Z9K009	INDIVIDUAL CARTON	1	(MC-CG3 03)

Ref. No.	Part No.	Part Name & Description	Qty	Remarks
P2	YMV46ZAR000	PARTITION BOARD	1	
P3	YMV01ZAR00V	INSTRUCTION BOOK	1	MALAY-SIA, THAI-LAND, SIN-GAPORE AND HONG KONG
P3	YMV01ZAR00B	INSTRUCTION BOOK	1	VIETNAM
P3	YMV01ZAR009	INSTRUCTION BOOK	1	INDIA
P4	YMV66ZBA000	ATM PROTECTOR	1	(MC-CG3 03)
P5	YMV54ZBA009	ATTACHMENT PART CASE	1	(MC-CG303) (ATTACHMENT BAG)

1 Specifications

Model	MC-CG301	MC-CG303
Power Source	AC220V~240V, 50Hz	
Power Source (Singapore)	AC230V~240V, 50Hz	-
Motor Power Max.	1400W	
Air Power	Paper : 350W	
Dust Capacity	Paper or Cloth Beg 1.2~1.4l	
Cord Length	5 meter	
Weight (Main Body)	3.3kg	
Dimension (WxLxH)	232mm x 325mm x 308mm	
Attachments	Floor Nozzle, Crevice Tool, Hose, Extension Wand, Curve Wand, Dusting Brush A, Hose Connecti	

2 Schematic Diagram

