

This Owner's Manual is provided and hosted by [Appliance Factory Parts](#).



# Proteam EVEREST/103244 Owner's Manual

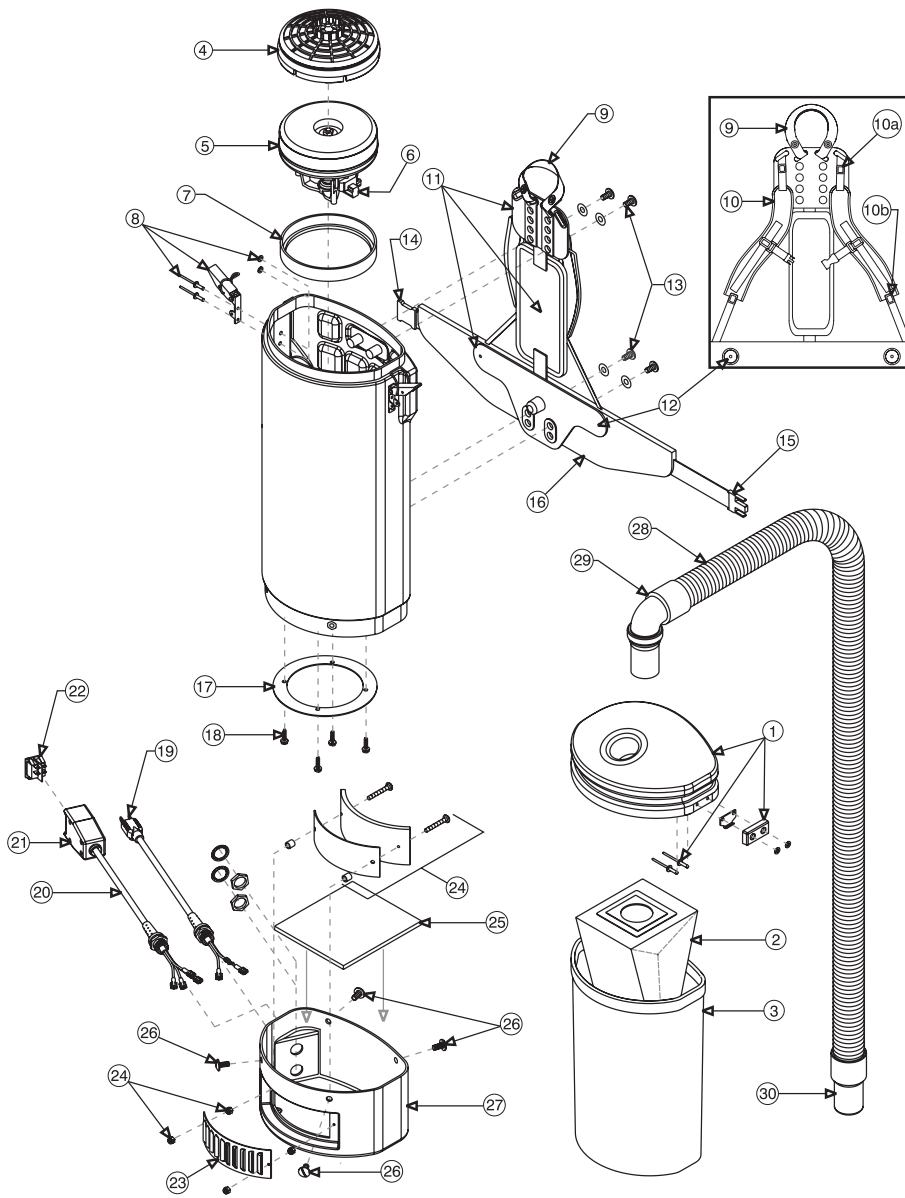
[Shop genuine replacement parts for Proteam  
EVEREST/103244](#)



[Find Your Proteam Vacuum Cleaner Parts - Select From 40 Models](#)

----- Manual continues below -----

# EVEREST ASSEMBLY



15701 Everest with commercial tools  
15703 Everest bags

Owner's Manual

# EVEREST P

ITEM	ORDER#	DESCRIPTION
1	103185	Lid Assembly: 1 Lid, 2 Latch 4 Washers
2	103191	580 sq. in. Intercept Micro F
3	103176	Cloth Filter
4	100030	Dome Filter w/Foam Media
	100343	Foam Media for Dome Filter
	101220	High Filtration Disc (Optional)
5	103329	1340 Watt Motor/Fan w/Crim
6	101720	Replacement Carbon Brush S
7	103236	Motor Seal
8	103270	Draw Latch Assembly: 1 Latch
9	101737	Carry Handle w/Rivet and Wa
10	100356	Shoulder Strap Assembly: 2 S
10a	100358	Shoulder Strap Plastic Adjust
10b	100357	Shoulder Strap Plastic Adjust
11	103257	Backplate Assembly (2 Pieces
12	100375	Barrel Nut Connection Set fo
13	100716	Backplate (Black) Connection
14	100363	Waist Belt Keeper
15	100364	Waist Belt Latch
16	100359	Waist Belt
	103166	Two-piece Backplate System (9,10,10a,10b,11,12,13,14,1
17	102181	Motor Plate
18	100378	Motor Plate Connection Scre
19	103334	Power Cord (18" 16/3) Asser
20	101610	Switch Cord Assembly Comp
	101714	Switch Cord w/Crimps
21	101472	Switch Box w/Velcro® and S
22	100743	Double Pole On/Off Switch
23	102052	Exhaust Louver
24	103274	Sound/Exhaust Assembly: 2 M
25	102510	Acoustic Insulator, Felt, Large
26	103275	Bottom Cap Screw Kit: 4 Scr
27	103169	Bottom Cap (Black)
28	103048	Static Dissipating Hose w/Cu
29	101928	Replacement Cuff w/Swivel E
30	100694	Replacement Swivel Cuff (Bl
	101678	50' Extension Cord (Not sho

Owner's Manual