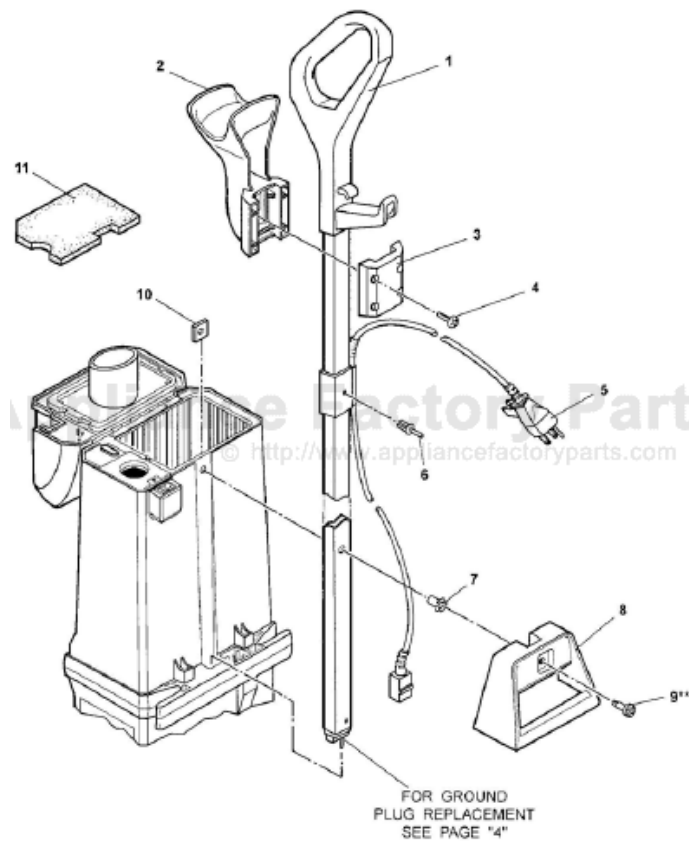


This Owner's Manual is provided and hosted by [Appliance Factory Parts](http://www.appliancefactoryparts.com).



Proteam U139H Owner's Manual

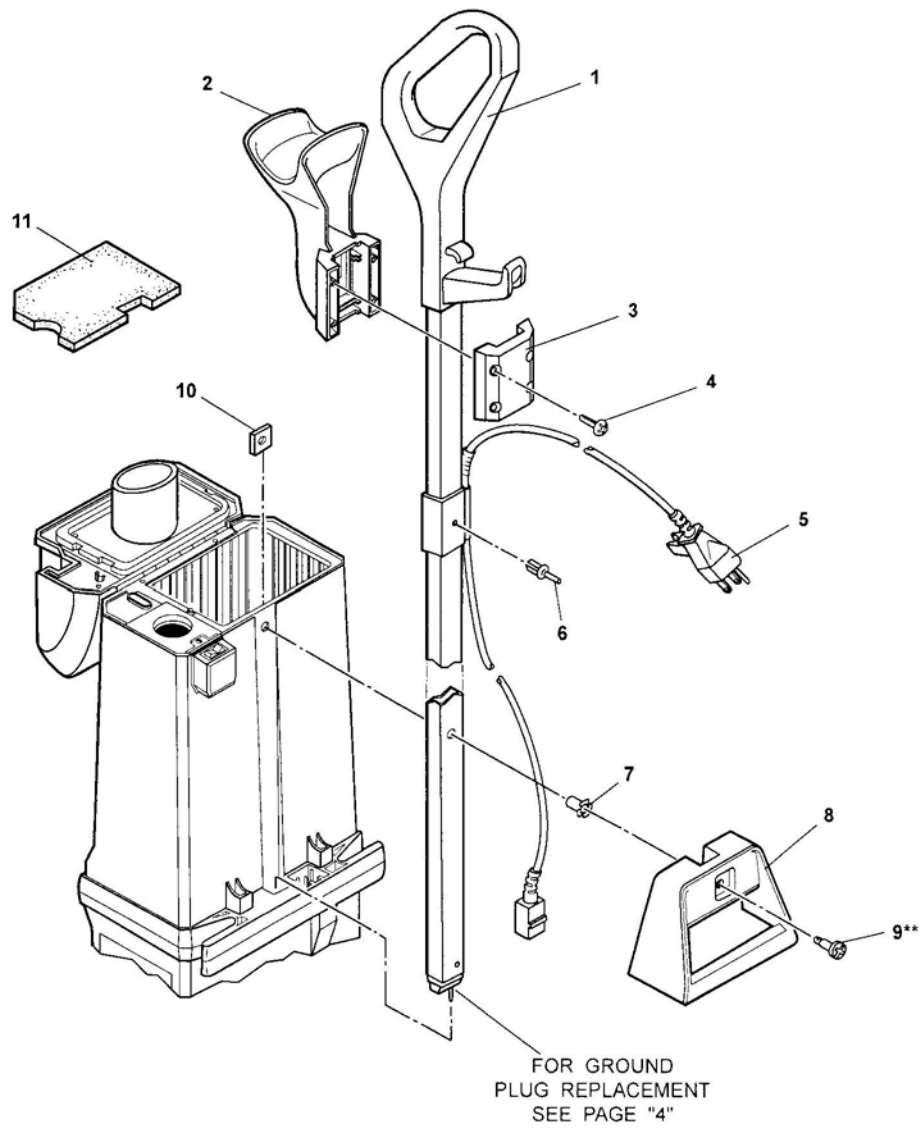
[Shop genuine replacement parts for Proteam U139H](#)



[Find Your Proteam Vacuum Cleaner Parts - Select From 40 Models](#)

----- Manual continues below -----

HANDLE ASSEMBLY

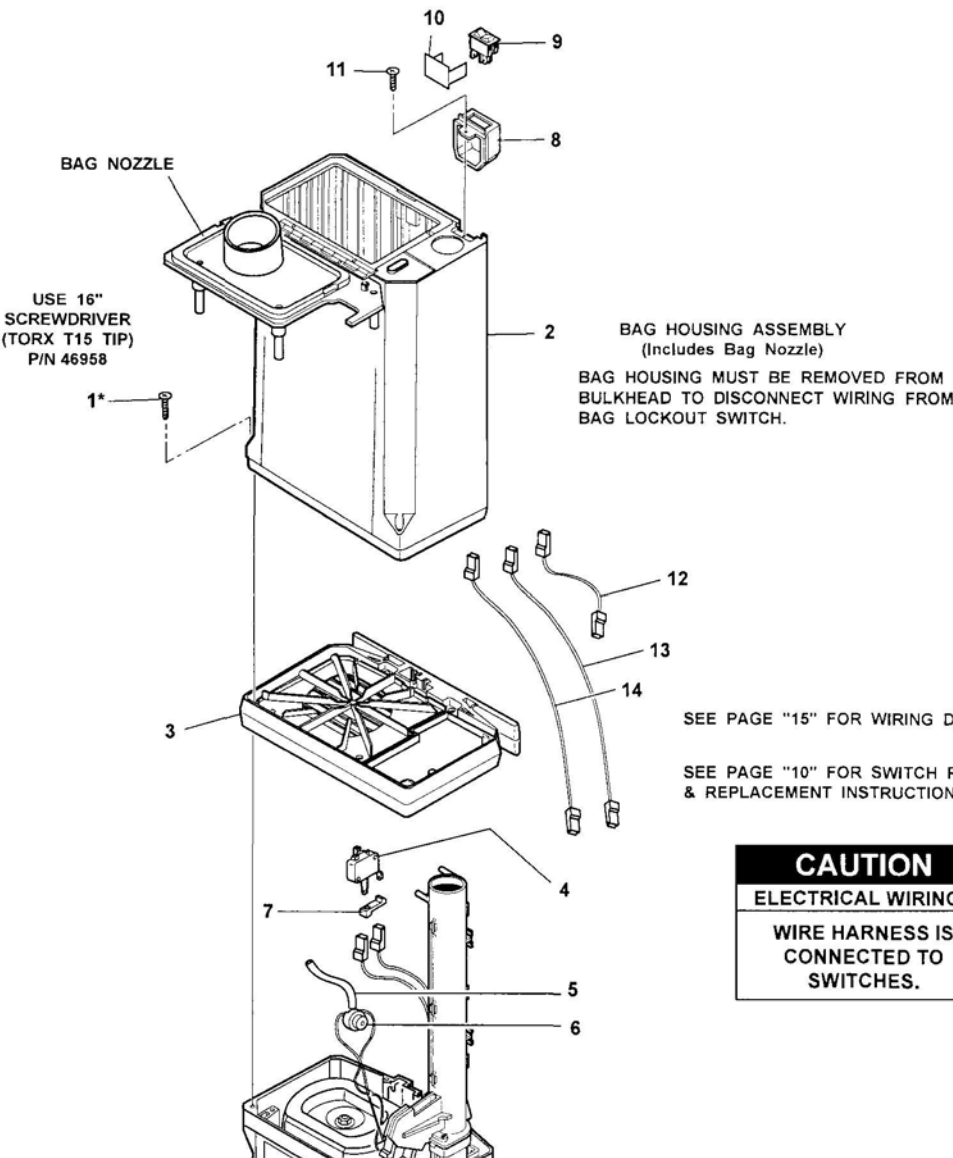


ITEM	PART No.	QTY.	DESCRIPTION
1	47887	1	HANDLE ASSEMBLY (W/O Cord)
2	48217	1	HOSE/TOOL HOLDER (Front)
3	48218	1	HOSE / TOOL HOLDER (Rear)
4	43785....		
5	PV-46953	1	CORD 50 ^{FT} (W/O Handle)
6	45383	1	RIVET
7	46998	1	HANDLE BUSHING
8	47292	1	CARRY HANDLE
9	43786	1	
10	43218	1	NUT PLATE
11	43762	1	MOTOR FILTER

****TIGHTENING TORQUE FOR SCREWS**

ITEM 9 20 TO 25 IN./LBS.

BAG HOUSING



USE 16"
SCREWDRIVER
(TORX T15 TIP)
P/N 46958

BAG NOZZLE

BAG HOUSING ASSEMBLY
(Includes Bag Nozzle)

BAG HOUSING MUST BE REMOVED FROM
BULKHEAD TO DISCONNECT WIRING FROM
BAG LOCKOUT SWITCH.

SEE PAGE "15" FOR WIRING DIAGRAM.

SEE PAGE "10" FOR SWITCH REMOVAL
& REPLACEMENT INSTRUCTIONS.

<p>CAUTION</p> <p>ELECTRICAL WIRING !</p> <p>WIRE HARNESS IS CONNECTED TO SWITCHES.</p>
--



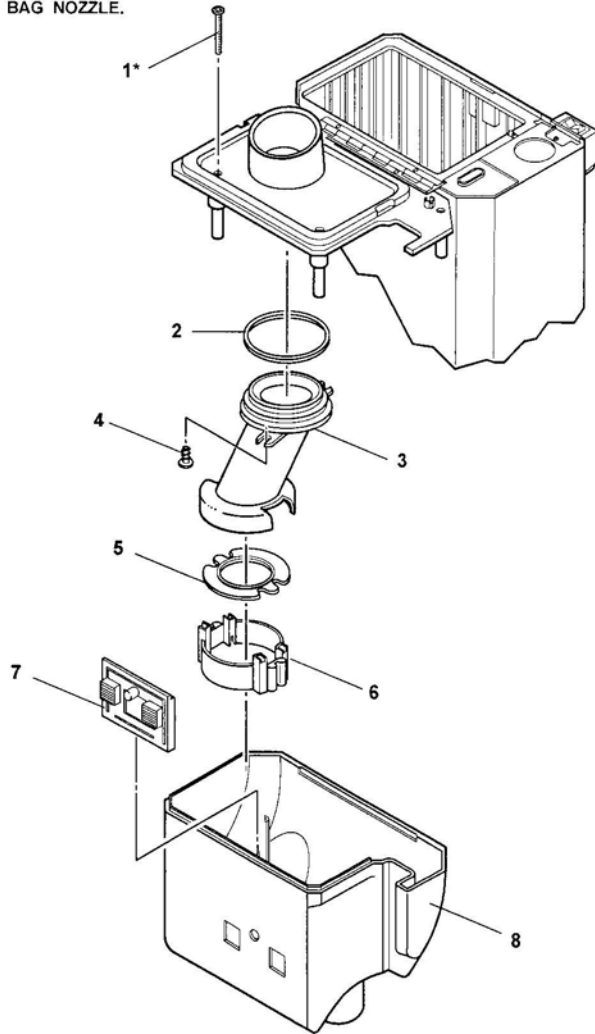
16" SCREWDRIVER - TORX T15 TIP
P/N 46958

*TIGHTENING TORQUE FOR SCREWS

ITEM 1 10 TO 12 IN./LBS.

BAG COVER REMOVAL

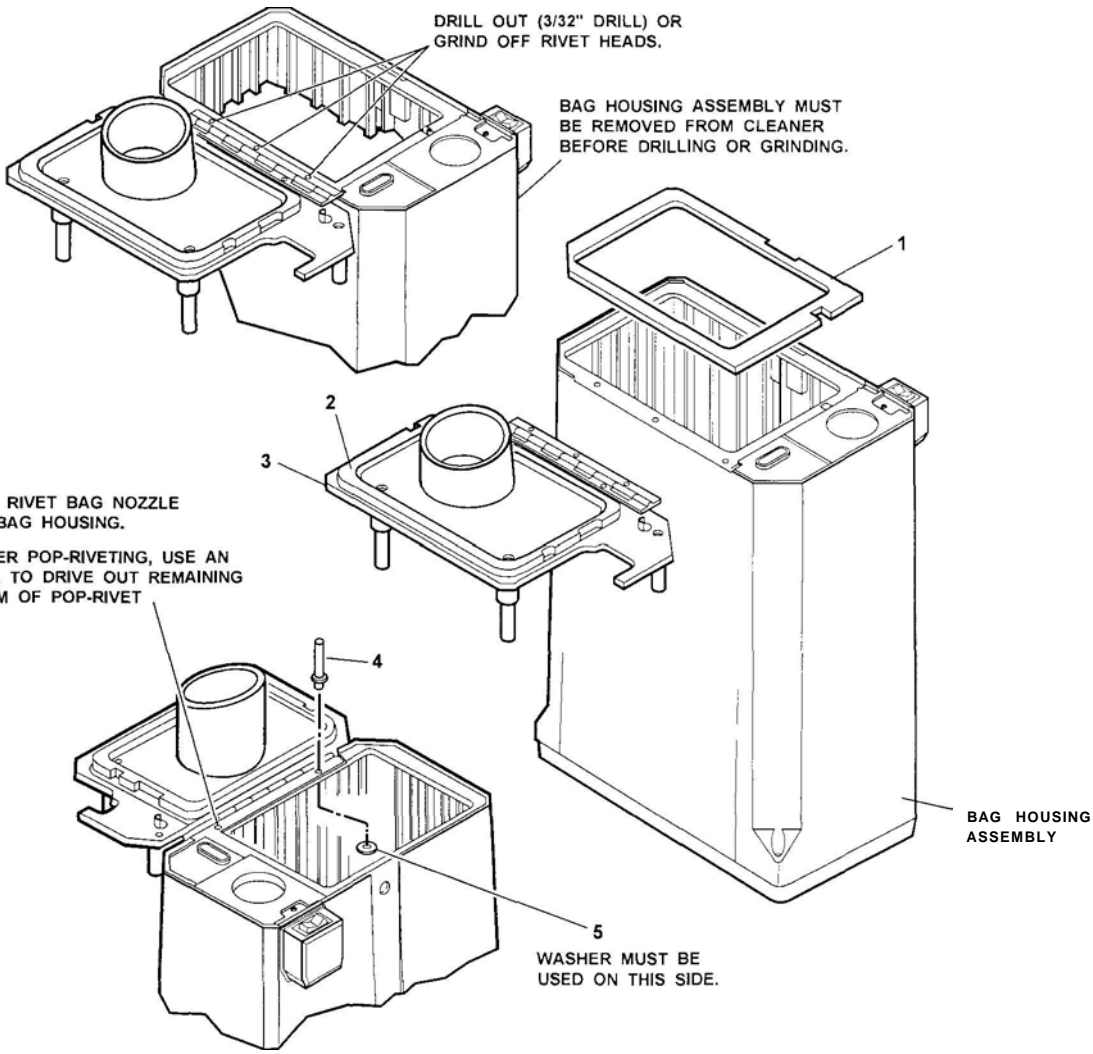
TO REMOVE BAG COVER, REMOVE THE FOUR (4) SCREWS HOLDING BAG COVER TO BAG NOZZLE.



*TIGHTENING TORQUE

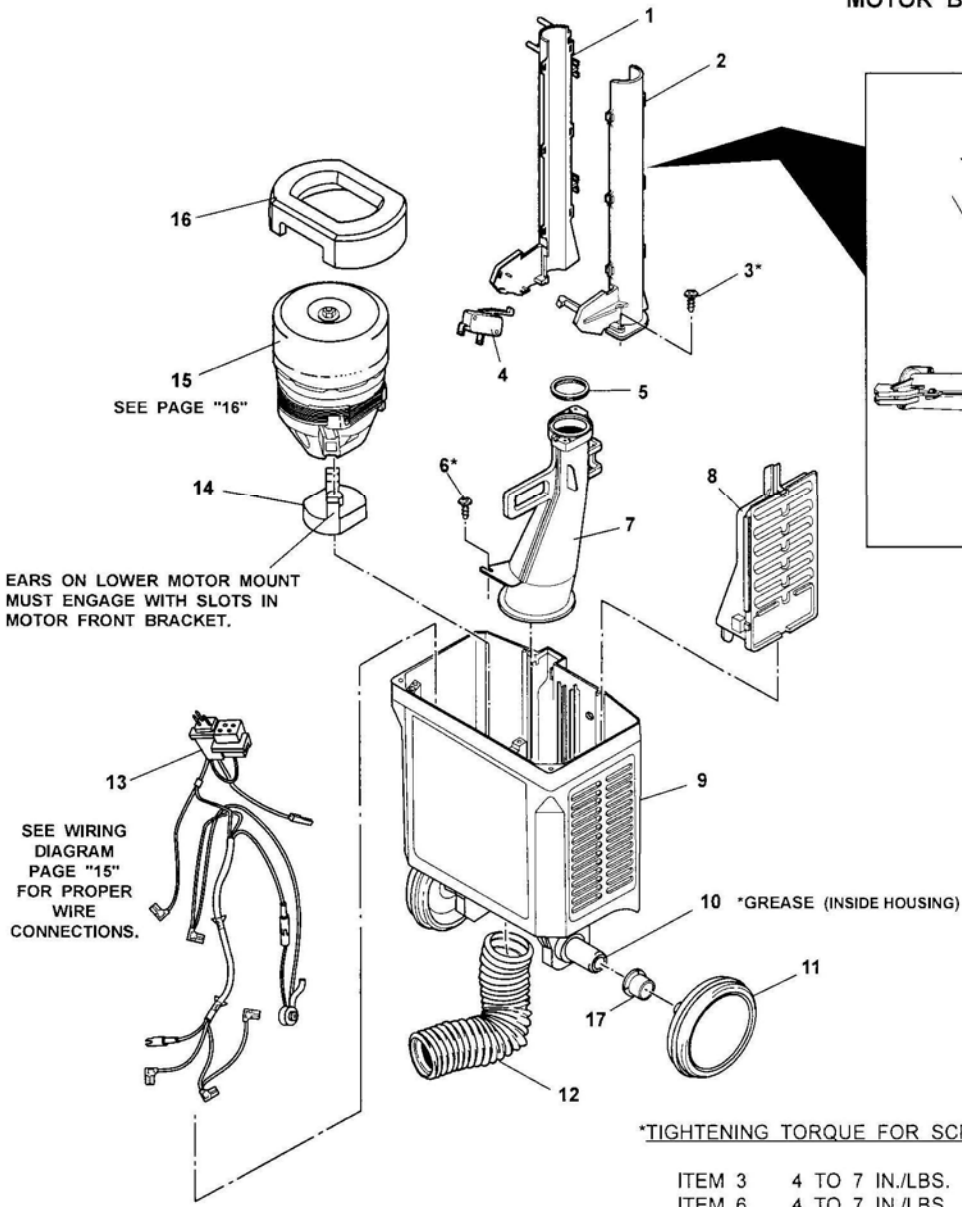
ITEM 1	4 N·m
ITEM 4	4 N·m

REPLACING BAG NOZZLE

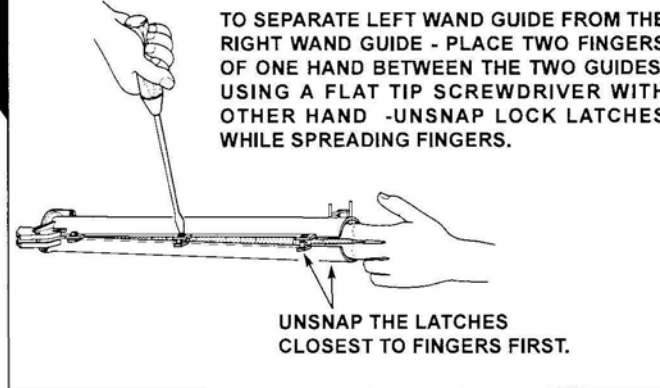


ITEM	PART No.	QTY
1	47864	1
2	47864	1
3	47836	1
4	1/8" x 3/8" LONG	3
5	13345	3

MOTOR BODY HOUSING



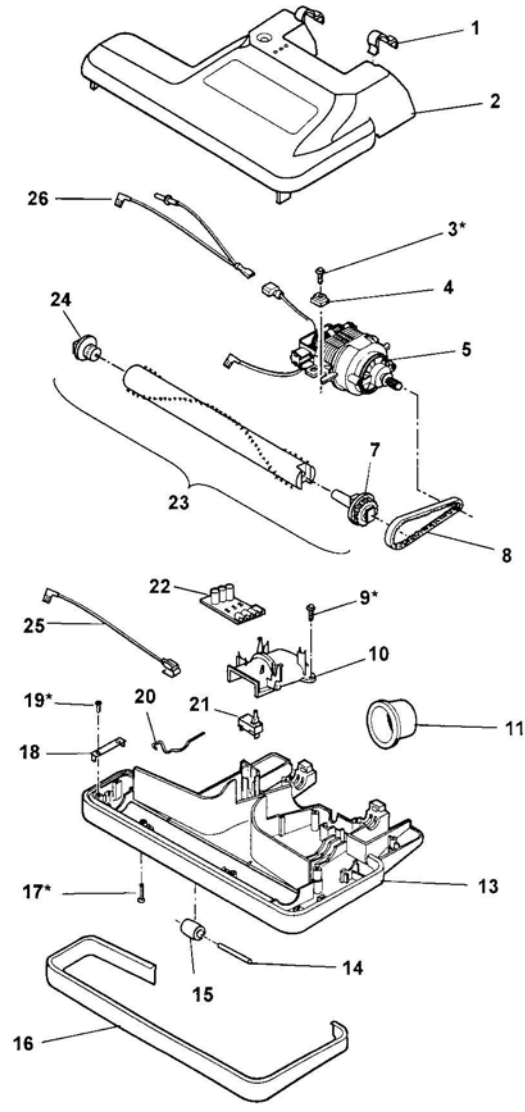
SEPARATION INSTRUCTIONS:



ITEM	SERVICE No.	QTY.
1	47839	1
2	47840	1
3	11006	2
4	47830	1
5	47844	1
6	11006	2
7	47838	1
8	47874	1
9	48272	1
10	13349	"A/R
11	43586	2
12	46941	1
13	NLA	1
14	47611	1
15	47829	1
16	43232	1
17	48445	2

"A/R-A S REQ (GREASE)

LOWER BASE UNIT



ITEM

- 1.....
- 2.....
- 3.....
- 4.....
- 5.....
- 7.....
- 8.....
- 9.....
- 10....
- 11....
- 13....
- 14....
- 15....
- 16....
- 17....
- 18....
- 19....
- 20....
- 21....
- 22....
- 23....
- 24....
- 25....
- 26....

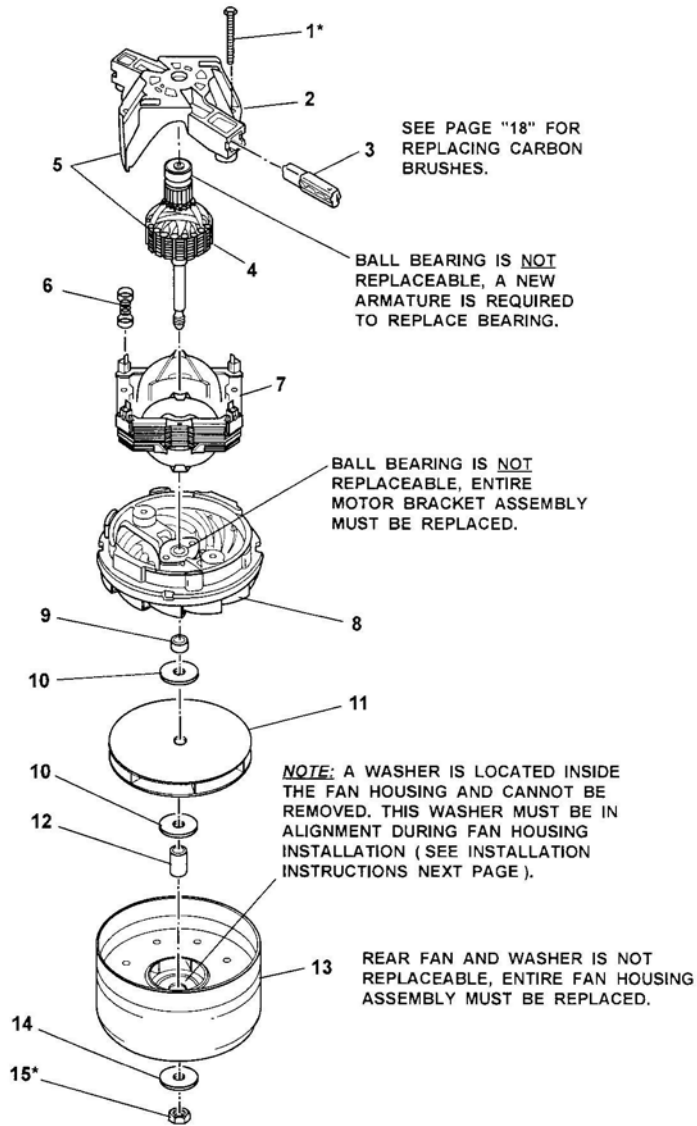
PART No.	QTY.	DESCRIPTION
43238	2	DETENT SPRING
48529	1	BASE COVER
13287	2	SCREW (Motor)
45191	2	ISOLATOR GROMMET
48539	1	MOTOR UNIT ASSEMBLY
45121	1	PULLEY ASSEMBLY
48359	1	MOTOR BELT (3/8" Wide)
13287	2	SCREW (Nozzle Cover)
48448	1	NOZZLE COVER
45143	1	HOSE SLEEVE
48507	1	BASE
45125	2	FRONT ROLLER SHAFT
43941	2	FRONT ROLLER
48508	1	BUMPER
47118	9	SCREW (Base)
46935	2	RETAINER (Brush Bearing)
13268	4	SCREW (Brush Bearing)
46930	2	WIRE FORM
46931	1	PERFORMANCE INDICATOR (SPI Board)
45853	1	CIRCUIT BREAKER
48509	1	BRUSH ASSEMBLY (W/ Brush Bearing & Pulley)
45124	1	BRUSH BEARING
48495	1	LEAD ASSEMBLY (SPI Board to Circuit Breaker)
48510	1	LEAD ASSEMBLY (W/Mate-N-Lok)

***TIGHTENING TORQUE FOR SCREWS**

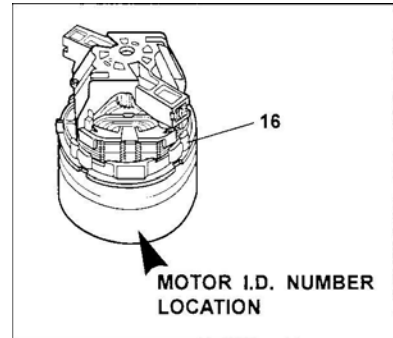
ITEM 3	18 TO 22 IN./LBS.
ITEM 9	18 TO 22 IN./LBS.
ITEM 17	18 TO 22 IN./LBS.
ITEM 19	10 TO 14 IN./LBS.

CLEANER MOTOR

(I.D. 6500-290)



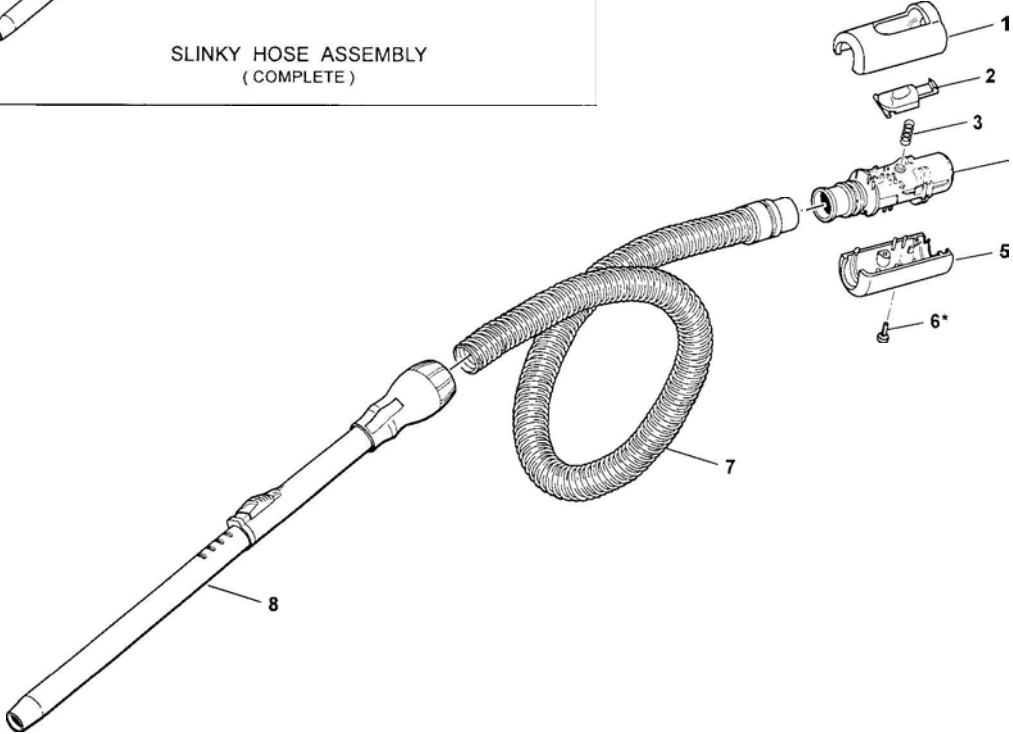
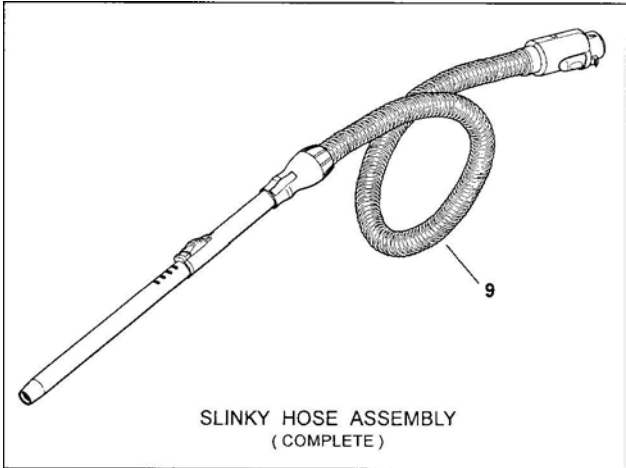
ITEM	SERVICE No.	QTY.	
1	47872	2	S
2	47873	1	F
3	47857	2	C
4	ORDER ITEM 5	1	A
5	47856	1	A
6	43489		E
7	47858	1	S
8	47871	1	M
9	45268	1	F
10	45267		V
11	43252	1	F
12	45269	1	F
13	45266	1	F
14	13295	1	V
15	13341	1	M
16	47829	1	M



*TIGHTENING

ITEM 1
ITEM 1

SLINKY HOSE

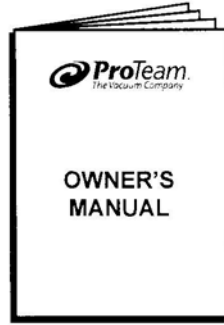
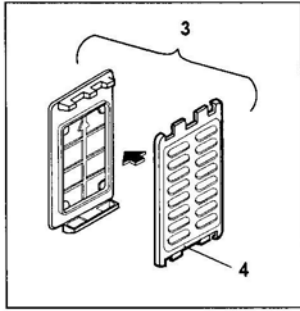
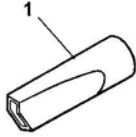


ITEM	SERVICE No.	QTY.	DESCRIPTION
1	48213	1	HOSE SLEEVE (Upper)
2	47100	1	LATCH (Hose Latch)
3	46076	1	SPRING
4	48212	1	TUBE SUPPORT (Slinkv Hnc:p1
5	48214	1	HOSE SLEEVE (Lower)
6	46746	1	SCREW (Torx - Hose Sleeve)
7	48211	1	SLINKY HOSE
8	48215	1	EXTENSION WAND ASSEMBLY
9	48210	1	SLINKY HOSE ASSEMBLY

*TIGHTENING TORQUE FOR SCREWS

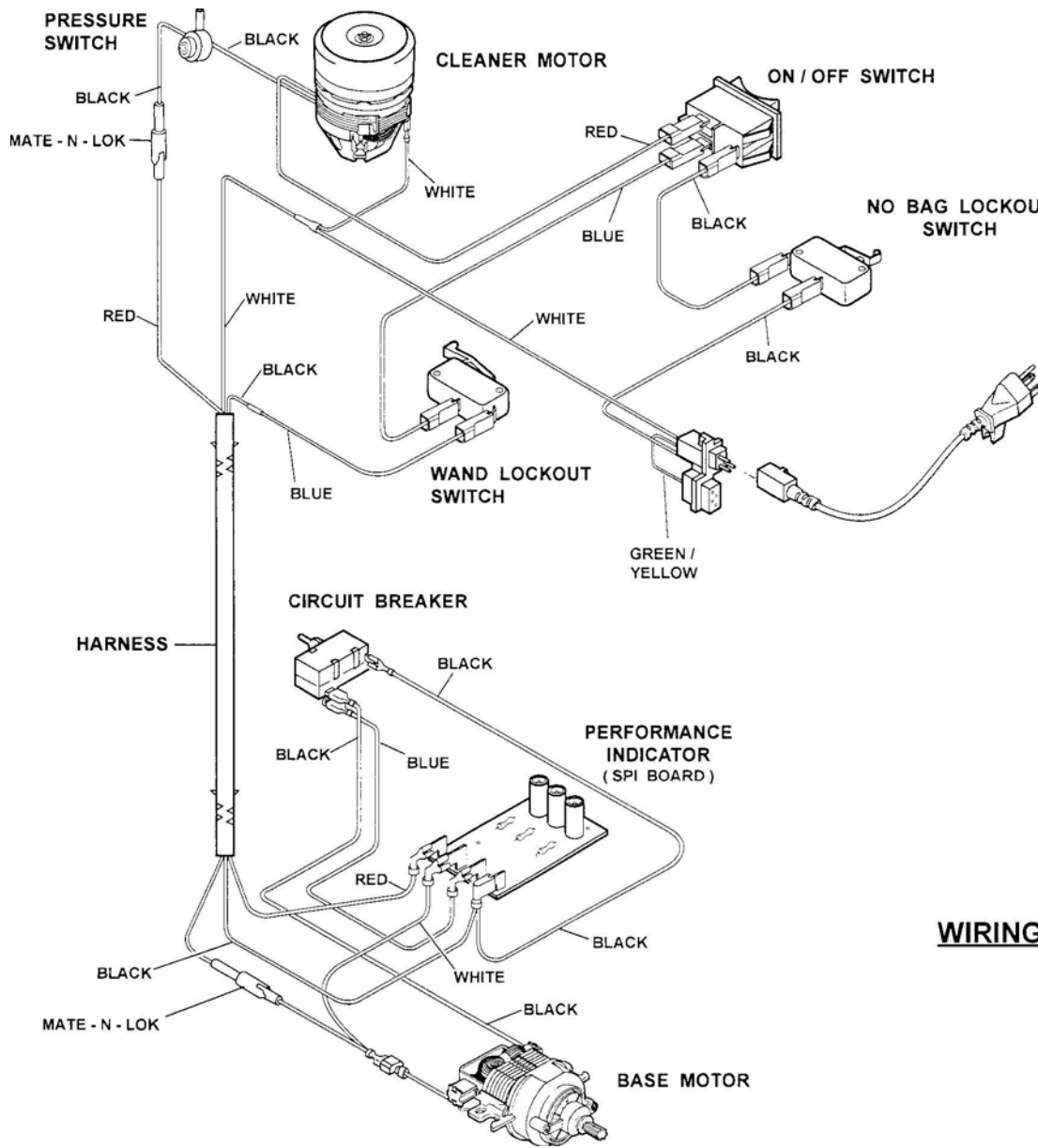
ITEM 6 4 TO 7 IN./LBS.

OPTIONAL ACCESSORIES



5

ITEM	PART No.	QTY.	DE
1	47982	1	NA
2	48139	1	CC
3	48367	1	AF
4	48368	2	RE
5	48530	1	OV



WIRING