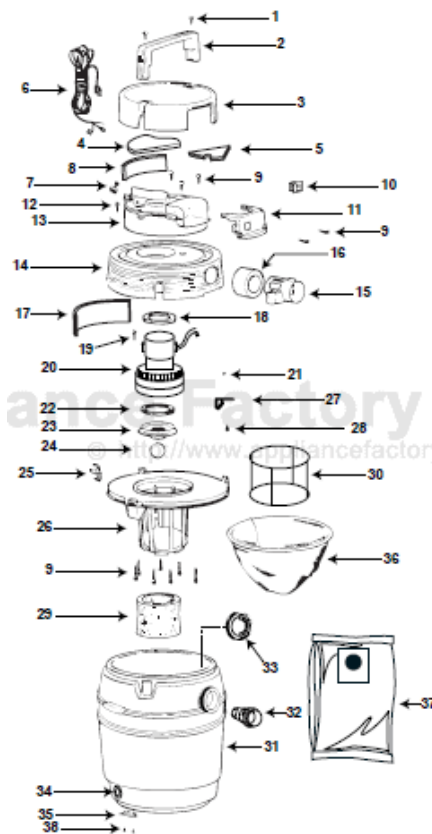


This Owner's Manual is provided and hosted by Appliance Factory Parts.



Shop Vac 950A Owner's Manual

[Shop genuine replacement parts for Shop Vac 950A](#)

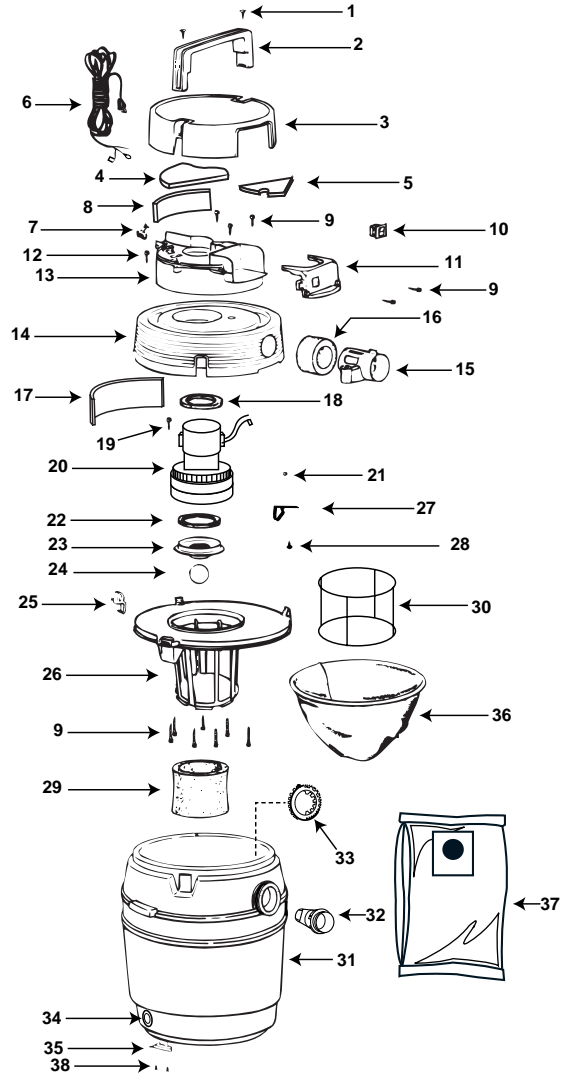


[Find Your Shop Vac Vacuum Cleaner Parts - Select From 487 Models](#)

----- Manual continues below -----

Model 950A

Catalog 950-20-10
(16 Gal.)



ITEM	DESCRIPTION	PART NO.
1	1/4" x 1", type BT Truss head slotted screw	15083-99-1
2	Handle	21303-01-1
3	Motor housing cover	21314-01-8
4	Foam insert	21321-00-5
5	Foam insert	21320-00-7
6	Power cord	04290-96-1
7	Strain relief bushing	34002-99-8
8	Foam insert	21324-00-9
9	#10 x 3/4" Screw hex head type AB	15039-99-3
10	Switch	82303-04-1
11	Electrical panel	21352-01-8
12	#10 x 3" slotted hex head type BT screw	15058-99-3
13	Upper housing	21396-01-5
14	Lower housing	21397-02-1
15	Exhaust cage	21309-00-0
16	Exhaust sleeve foam	21318-00-1
17	Foam insert	21325-00-6
18	Upper motor gasket	20700-00-1
19	Ground Screw	17008-99-6
20	Motor	13496-97-1
21	Wire nut	05001-99-5
22	Lower motor gasket	20716-00-7
23	Grid plate	88607-00-7
24	Ball float	00811-00-0
25	Latch	85501-62-3
26	Lid cage assembly	89855-31-6
27	Filter frame clips	99384-00-0
28	Screw #10 x 1/2" hex head	15061-99-7
29	Foam sleeve	90585-62-1
30	Full filter frame	30037-00-6
31	16 Gal. tank assembly (includes 3 brackets & 6 screws)	84991-97-5
32	Inlet fitting	64510-71-2
33	Inlet lock ring	64511-71-0
34	Drain plug cap	10620-20-1
35	Tank bracket assy.	42099-96-0
36	Full polyester filter	90638-00-8
37	High efficiency collection filter bag	91907-10-5
38	Screw #10 x 1" hex head	15096-99-3

Limited One-Year Warranty

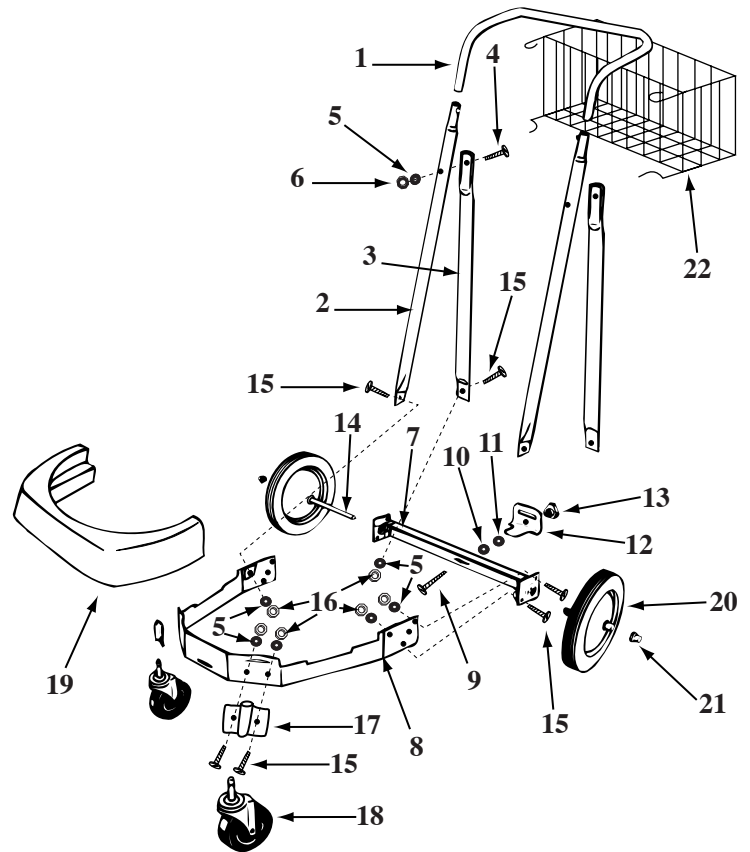
Shop-Vac Corporation warrants all Industrial, Commercial, and Contractor vacuum cleaners for one year from date of purchase to correct by repair or parts replacement without charge any product defect due to faulty material or workmanship, provided that the vacuum cleaner is not used for rental service.

Standard Accessories:

- 10' (3.05 m) x 1 1/2" (3.81 cm) Hose
- (2) 1 1/2" (3.81 cm) Metal extension wands
- 14" (35.56 cm) Metal master nozzle
- 14" (35.56 cm) Squeegee shoe
- 14" (35.56 cm) Brush shoe
- 14" (35.56 cm) Rug shoe
- 1 1/2" (3.81 cm) Crevice tool
- 1 1/2" (3.81 cm) Round brush
- 6" (15.24 cm) Utility nozzle



ITEM	DESCRIPTION	PART NO.
1	Handle (14")-10 Gal. (16")-20 Gal.	20855-02-9 20855-03-7
2	Handle upright	20856-01-9
3	Handle brace	20857-01-7
4	1/4 - 20 x 1 1/4" Hex head machine screw (Black)	09074-99-8
5	1/4" External tooth lockwasher	23010-99-4
6	1/4 - 20 Hex nut (Black)	13035-99-3
7	Rear dolly frame (14")-10 Gal. (16")-20 Gal.	20832-00-2 20837-00-1
8	Main dolly frame (14")-10 Gal. (16")-20 Gal.	20831-00-4 20836-00-3
9	5/16 -18 x 2 1/2" Hex head bolt	09073-99-0
10	5/16" - Split lockwasher	02005-99-9
11	5/16 - 18 Hex nut	13003-99-1
12	Tank retainer bracket	20853-00-8
13	Threaded knob	23301-00-5
14	Axle (14")-10 Gal. (16")-20 Gal.	24406-00-1 24407-00-9
15	1/4 - 20 x 5/8" Hex head machine screw	09028-99-4
16	1/4 - 20 Hex nut	13001-99-5
17	Caster socket	75400-01-0
18	Caster	67729-00-4
19	Bumper (14")-10 Gal. (16")-20 Gal.	87810-01-6 87811-01-4
20	10" Wheel (25.4cm) Black Grey	24205-00-7 24207-00-3
21	Cap nut	43002-99-7
22	*Metal accessory basket (14")-10 Gal. (16")-20 Gal.	99358-01-2 99358-02-0



*Optional

Dolly Assembly Instructions

Tools required:

(2) 1/2 inch open end wrenches, (2) 7/16 inch open end wrenches, or a socket set and a hammer.

1. Insert 2 1/2 inch long bolt through center hole in rear frame, attach split lockwasher, nut and tighten securely.
2. Attach handle brace to back of rear frame with 5/8 inch long machine screws, lockwashers, and nuts. (Finger tighten only.)
3. Position main frame inside rear frame. Attach (2) 5/8 inch long machine screws, lockwashers and nuts in both sides. Tighten securely.
4. Attach handle uprights, inside main frame (make sure buttons at top face inward) using 5/8 inch long machine screws, lockwashers and nuts. (Finger tighten only.) Align holes at top of handle braces with holes in handle uprights. Attach with 1 1/4 inch long machine screws, lockwashers and nuts. (Tighten securely.)
5. Go back and tighten machine screws at bottom of uprights and braces.
6. Attach caster sockets (open end down) to front of main frame using 5/8 inch long machine screws, lockwashers and nuts. Insert casters into sockets.
7. Attach handle onto uprights by pushing down and holding buttons in on uprights.
8. Place tank retaining bracket through slot and bolt in rear frame and screw on knob.
9. Slide bumper down over main dolly frame until it bottoms out.
10. Place axle upright on a hard surface and hammer on (1) cap nut. Place (1) wheel on axle and slide down to cap nut. Slide axle through rear of frame and slide on other wheel. Before assembling cap nut on other end of axle, be certain dolly is assembled correctly. (You may place tank on dolly and tighten knob of retaining bracket to be sure of correct assembly.)
11. After ensuring dolly is assembled correctly remove tank and place dolly on side with installed cap nut on hard surface and hammer second cap nut on axle.