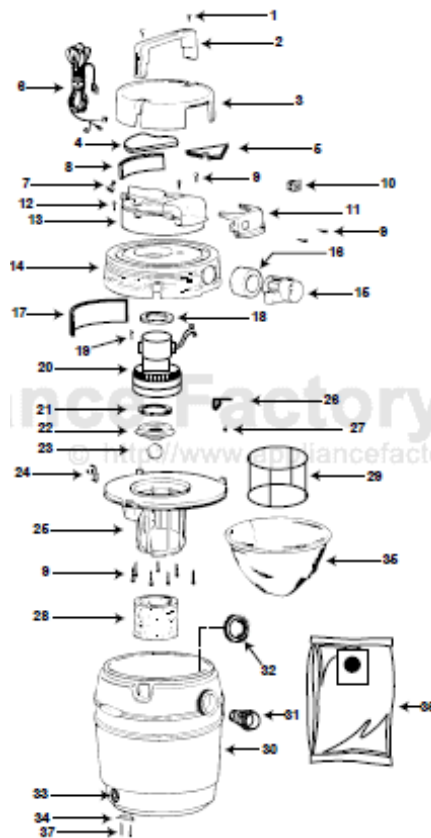


This Owner's Manual is provided and hosted by Appliance Factory Parts.



Shop Vac 950B Owner's Manual

[Shop genuine replacement parts for Shop Vac 950B](#)

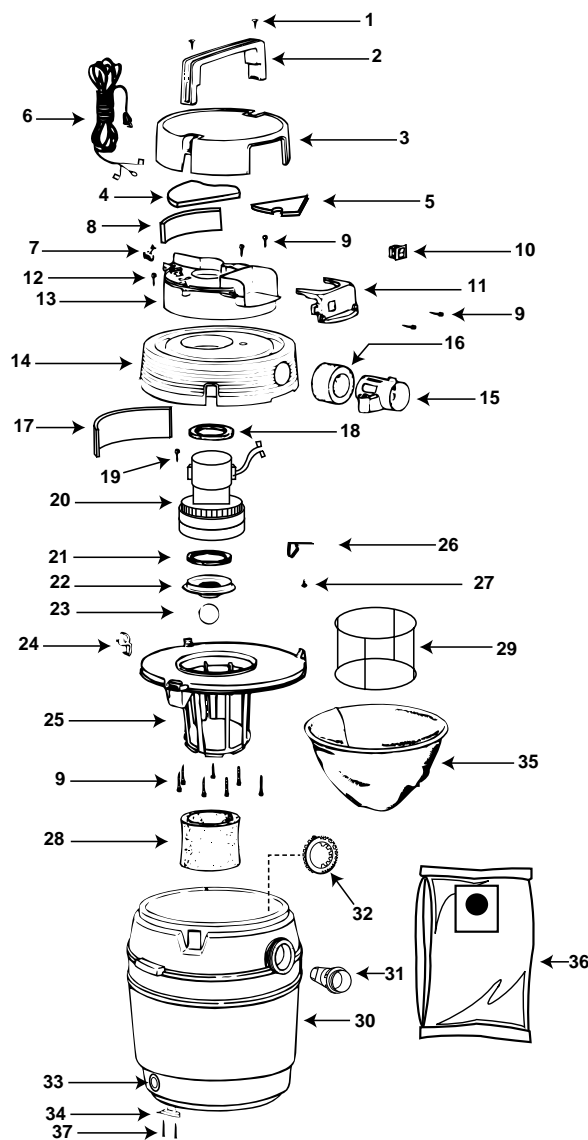


[Find Your Shop Vac Vacuum Cleaner Parts - Select From 487 Models](#)

----- Manual continues below -----

Model 950B

Catalog 950-20-10
(16 Gal.)



ITEM	DESCRIPTION	PART NO.
1	1/4" x 1", type BT Truss head slotted screw	15083-99-1
2	Handle	21303-01-1
3	Motor housing cover	21314-01-8
4	Foam insert	21321-00-5
5	Foam insert	21320-00-7
6	Power cord	04247-96-1
7	Strain relief bushing	34002-99-8
8	Foam insert	21324-00-9
9	#10 x 3/4" Screw hex head type AB	15039-99-3
10	Switch	82319-00-5
11	Electrical panel	21340-01-3
12	#10 x 3" slotted hex head type BT screw	15058-99-3
13	Upper housing	21396-11-4
14	Lower housing	21397-02-1
15	Exhaust cage	21309-00-0
16	Exhaust sleeve foam	21318-00-1
17	Foam insert	21325-00-6
18	Upper motor gasket	20700-00-1
19	Ground Screw	17008-99-6
20	Motor	13496-97-1
21	Lower motor gasket	20716-00-7
22	Grid plate	88607-00-7
23	Ball float	00811-00-0
24	Latch	85501-01-3
25	Lid cage assembly	89855-51-4
26	Filter frame clips	99384-00-0
27	Screw #10 x 1/2" hex head	15061-99-7
28	Foam sleeve	90585-62-1
29	Full filter frame	30037-00-6
30	16 Gal. tank assembly (includes 3 brackets & 6 screws)	84991-97-5
31	Inlet fitting	64510-10-0
32	Inlet lock ring	64511-00-9
33	Drain cap	10620-20-1
34	Tank lip	20839-00-7
35	Full polyester filter	90638-00-8
36	High efficiency collection filter bag	91907-10-5
37	Screw #10 x 1" hex head	15096-99-3

Standard Accessories:

- 10' (3.05 m) x 1 1/2" (3.81 cm) Hose
- (2) 1 1/2" (3.81 cm) Metal extension wands
- 14" (35.56 cm) Deluxe master nozzle
- 14" (35.56 cm) Double-blade squeegee insert
- 14" (35.56 cm) Floor brush insert
- 14" (35.56 cm) Carpet insert
- 1 1/2" (3.81 cm) Crevice tool
- 1 1/2" (3.81 cm) Round brush
- 6" (15.24 cm) Utility nozzle

Limited One-Year Warranty

Shop-Vac Corporation warrants all Industrial, Commercial, and Contractor vacuum cleaners for one year from date of purchase to correct by repair or parts replacement without charge any product defect due to faulty material or workmanship, provided that the vacuum cleaner is not used for rental service.

SC87518-21