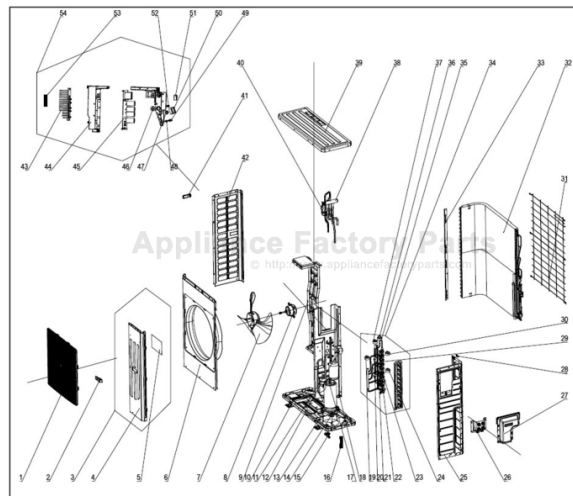


This Owner's Manual is provided and hosted by [Appliance Factory Parts](http://ApplianceFactoryParts.com).



COMFORT-AIRE A-VFH42PB-1 Owner's Manual

[Shop genuine replacement parts for COMFORT-AIRE
A-VFH42PB-1](#)



[Find Your COMFORT-AIRE HVAC Parts - Select From 1486 Models](#)

----- Manual continues below -----

Comfort-Cire®

Century®

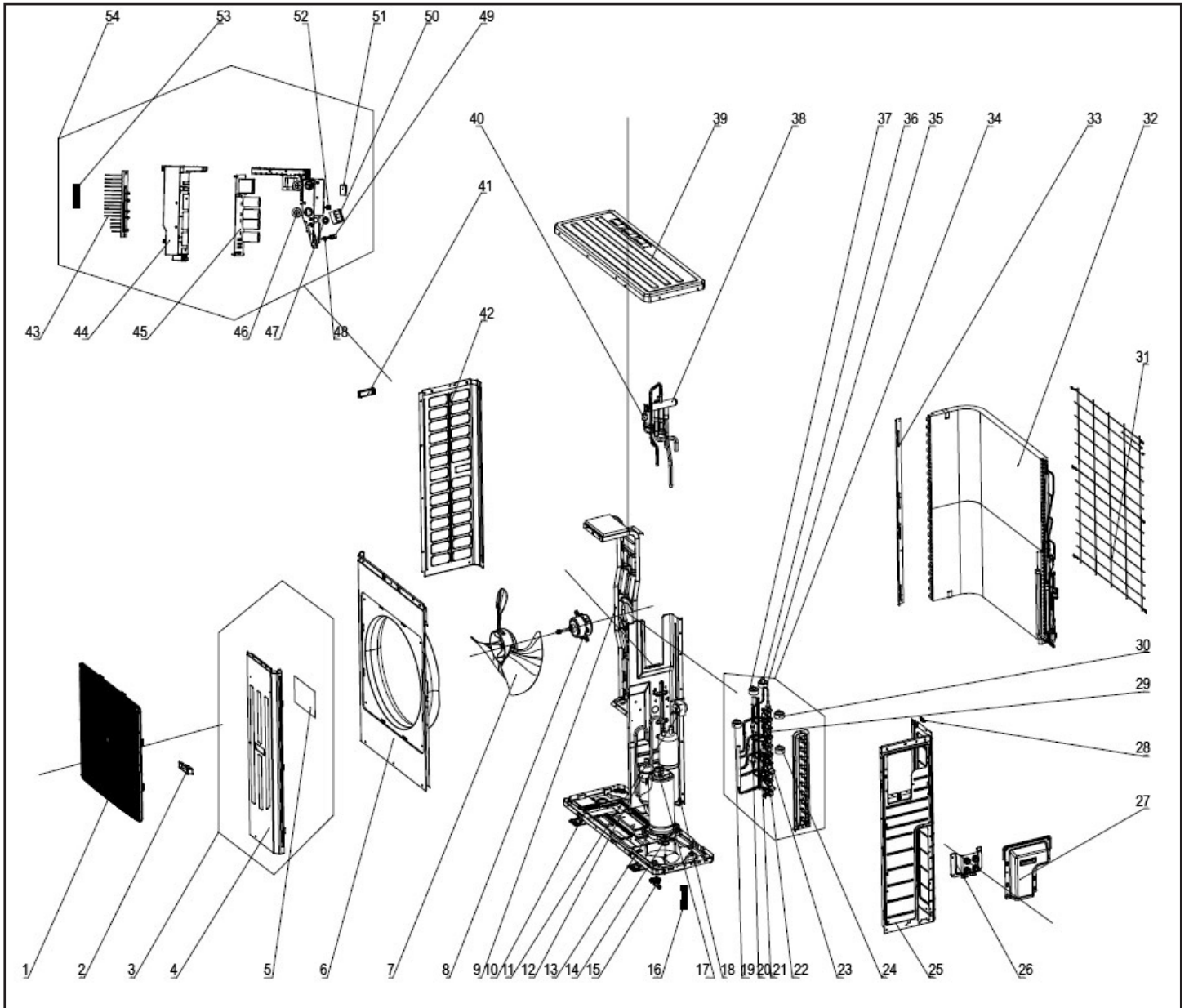
MARS®
Delivering Confidence

REPLACEMENT PARTS LIST

InverterFlex Series®
Outdoor Ductless Mini-Split

A-VFH42PB-1

EXPLODED VIEW



REPLACEMENT PARTS

Location	Part Name	Quantity	Part No.
1	Front Grill	1	01574106
2	Handle	1	26235253
3	Front Side Plate Sub-Assembly	1	01305508
4	Front Side Plate	1	01305065P
5	Insulated Board (Cover of Electric Box)	1	20113003
6	Cabinet	1	01435007P
7	Axial Flow Fan	1	10335010
8	Fan Motor	1	1570280201
9	Motor Support Assy	1	01805200256
10	Electrical Heater	1	765100047
11	Reactor	1	43130186
12	Compressor	1	00205200003
13	Electrical Heater (Compressor)	1	7651873209
14	Compressor Gasket	3	76713066
15	Drainage Joint	1	26113009
16	Sensor Sub-Assembly	1	39004100007G
17	Compressor Overload Protector (External)	1	0183031
18	Bolt	2	70210051
19	Electric Expand Valve Fitting	1	4304413222
20	Strainer A	2	07210022
21	Bidirection Strainer	1	07220016
23	Cut off Valve	1	071302391
24	Electric Expand Valve Fitting	1	4304413234
25	Right Side Plate	1	0131410002701P
26	Wiring Cover Sub-Assembly	1	01264100034
27	Handle Assembly	1	02204100008
28	Wiring Clamp	1	26115004
29	Cut off Valve	1	07130239
30	Electric Expand Valve Fitting	1	4304413208
31	Rear Grill	1	01574100007
32	Condenser Assembly	1	01124100116_L61437
33	Condenser Support Plate	1	01895309
34	Valve Support Assembly	1	030163000008
35	Electric Expand Valve Fitting	1	4304413237
36	Electronic Expansion Valve Assembly	1	030174000020
37	Electric Expand Valve Fitting	1	4304413235
38	4-Way Valve Assembly	1	04045200070
39	Top Cover Sub-Assembly	1	01264100028
40	Pressure Protect Switch	1	4602000902
41	Left Handle	1	26235401
42	Left Side Plate	1	01305064P
43	Radiator	1	49018000077
44	Electric Box	1	26904100013
45	Main Board	1	30228000025
46	Cable Cross Loop	2	76510021
47	Magnetic Ring	4	49010109
48	Insulation Gasket	1	70410006
49	Wire Clamp	1	71010005
50	Terminal Board	1	42018094
51	Terminal Board	5	420111041
52	Wire Clamp	5	71010003
53	Sensor Sub-Assembly	1	39004100006G
54	Electric Box Assembly	1	01395200377_L61437

Due to ongoing product improvements, specifications and dimensions are subject to change and correction without notice or incurring obligations. Determining the application and suitability for use of any product is the responsibility of the installer. Additionally, the installer is responsible for verifying dimensional data on the actual product prior to beginning any installation preparations.

Incentive and rebate programs have precise requirements as to product performance and certification. All products meet applicable regulations in effect on date of manufacture; however, certifications are not necessarily granted for the life of a product. Therefore, it is the responsibility of the applicant to determine whether a specific model qualifies for these incentive/rebate programs.

Comfort-Cire®  **Century**®

1900 Wellworth Ave., Jackson, MI 49203 • Ph. 517-787-2100 • www.marsdelivers.com

