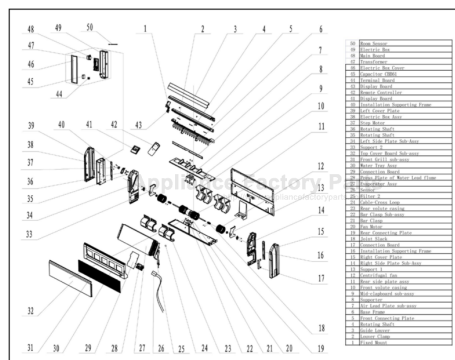


This Owner's Manual is provided and hosted by [Appliance Factory Parts](#).



COMFORT-AIRE B-VFH24UA-1 Owner's Manual

[Shop genuine replacement parts for COMFORT-AIRE
B-VFH24UA-1](#)



[Find Your COMFORT-AIRE HVAC Parts - Select From 1486 Models](#)

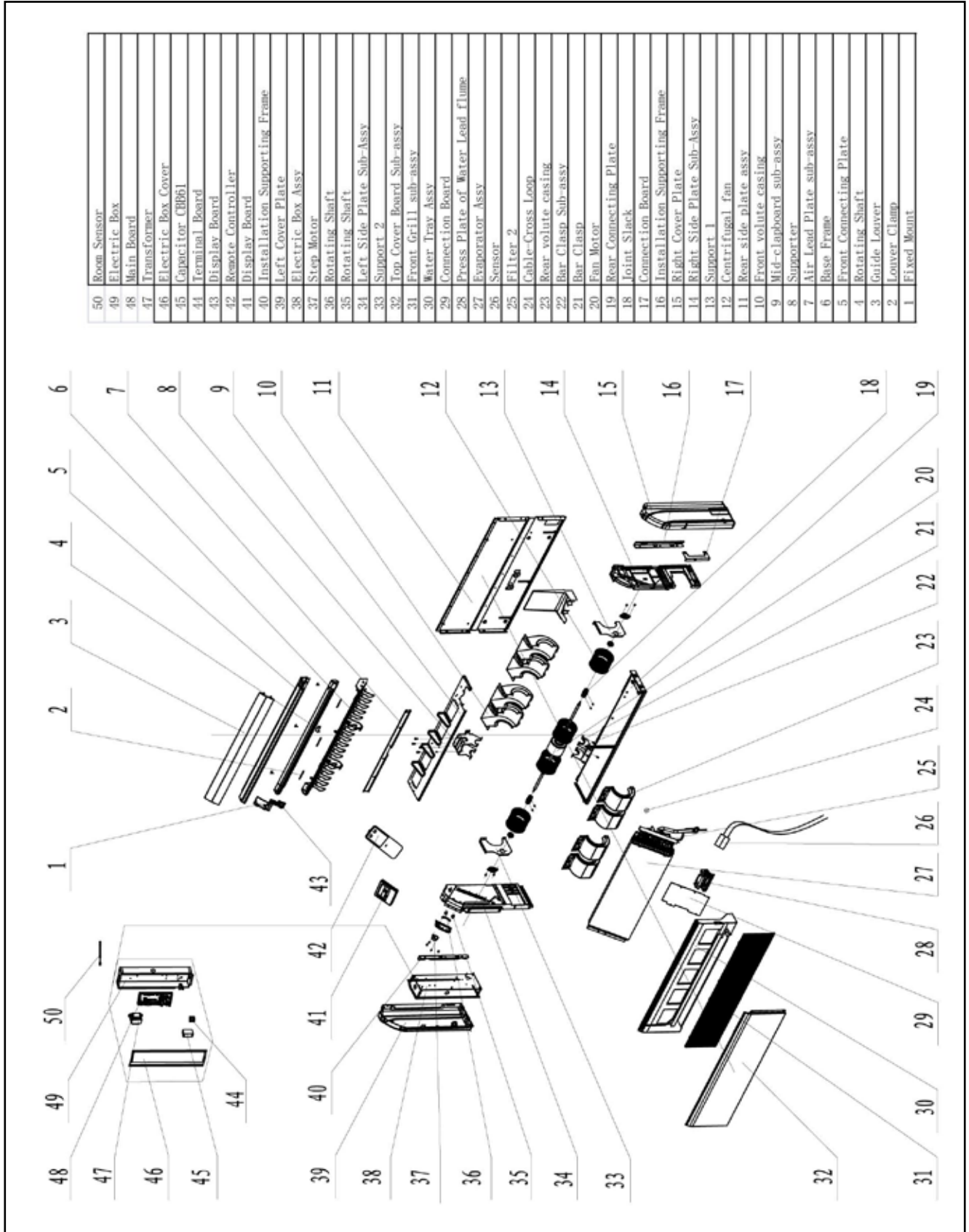
----- Manual continues below -----

HEAT CONTROLLER

**REPLACEMENT
PARTS LIST**

**InverterFlex Series®
Floor & Ceiling Console Mini-Split
B-VFH24UA-1
Heat Pumps**

EXPLODED VIEW



REPLACEMENT PARTS

Location	Part Name	Quantity	Part No.
1	Fixed Mount	1	26909426R
2	Louver Clamp	2	26112127
3	Guide Louver	2	10619403
4	Rotating Shaft	4	26909430
5	Front Connection Plate	1	01349414P
6	Base Frame	1	26909448
7	Induced air plate subassembly	1	02229418
8	Supporter	1	01805288
9	Mid Clapboard Sub-assy	1	01249427
10	Front Volute Casing	4	26905205
11	Rear Side Plate Assy	1	01319440
12	Centrifugal Fan	4	10425200
13	Support 1	1	01809417
14	Right Side Plate Sub-Assy	1	01319429
15	Right Cover Plate	1	26909444
16	Installation Supporting Frame	1	01809402
17	Connection Board	1	02229406
18	Joint Slack	2	73018731
19	Rear Connection board	1	01349422
20	Fan Motor	1	15709409
21	Bar Clasp	1	70818405
22	Bar Clasp sub-assy	1	70815201
23	Rear Volute Casing	4	26905206
24	Cable Cross Loop	1	76514201
25	Strainer	1	07212001
26	Temperature Sensor	1	3900019822
27	Evaporator Assy	1	01029474
28	Plate Board of Water Releasing Flume	1	26909442
29	Connection Board	1	02229428
30	Water Tray Assy	1	01289404
31	Front Grill sub-assy	2	01579403
32	Top Cover Board Sub-assy	1	01269409
33	Support 2	1	01809418
34	Left Side Plate Sub-Assy	1	0131942801
35	Rotating Shaft	1	26909412
36	Rotating Shaft	1	26909413
37	Stepping Motor	1	1521240206
38	Electric Box Assy	1	02404654
39	Left Cover Plate	1	26909443
40	Installation Supporting Frame	1	01809401
41	Display Board	1	30296317_L08294
42	Remote Controller	1	305100501_L08294
43	Display Board	1	30294220
44	Terminal Board	1	420111041
45	Capacitor CBB61	1	33010027
46	Electric Box Cover	1	01429420
47	Transformer	1	43110257
48	Main Board	1	30226350
50	Temperature Sensor	1	390001978G

Due to ongoing product improvements, specifications and dimensions are subject to change and correction without notice or incurring obligations. Determining the application and suitability for use of any product is the responsibility of the installer. Additionally, the installer is responsible for verifying dimensional data on the actual product prior to beginning any installation preparations.

Incentive and rebate programs have precise requirements as to product performance and certification. All products meet applicable regulations in effect on date of manufacture; however, certifications are not necessarily granted for the life of a product. Therefore, it is the responsibility of the applicant to determine whether a specific model qualifies for these incentive/rebate programs.

HEAT CONTROLLER

1900 Wellworth Ave., Jackson MI 49203 • Ph. 517-787-2100 • www.heatcontroller.com

A  Company