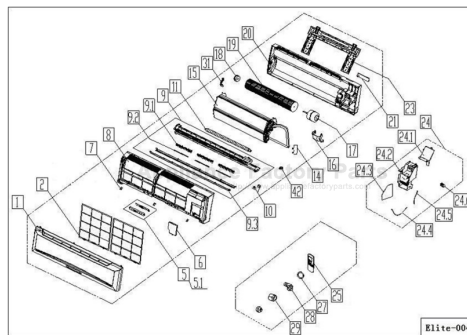


This Owner's Manual is provided and hosted by [Appliance Factory Parts](#).



COMFORT-AIRE B-SMH12SC Owner's Manual

[Shop genuine replacement parts for COMFORT-AIRE
B-SMH12SC](#)



[Find Your COMFORT-AIRE HVAC Parts - Select From 1486 Models](#)

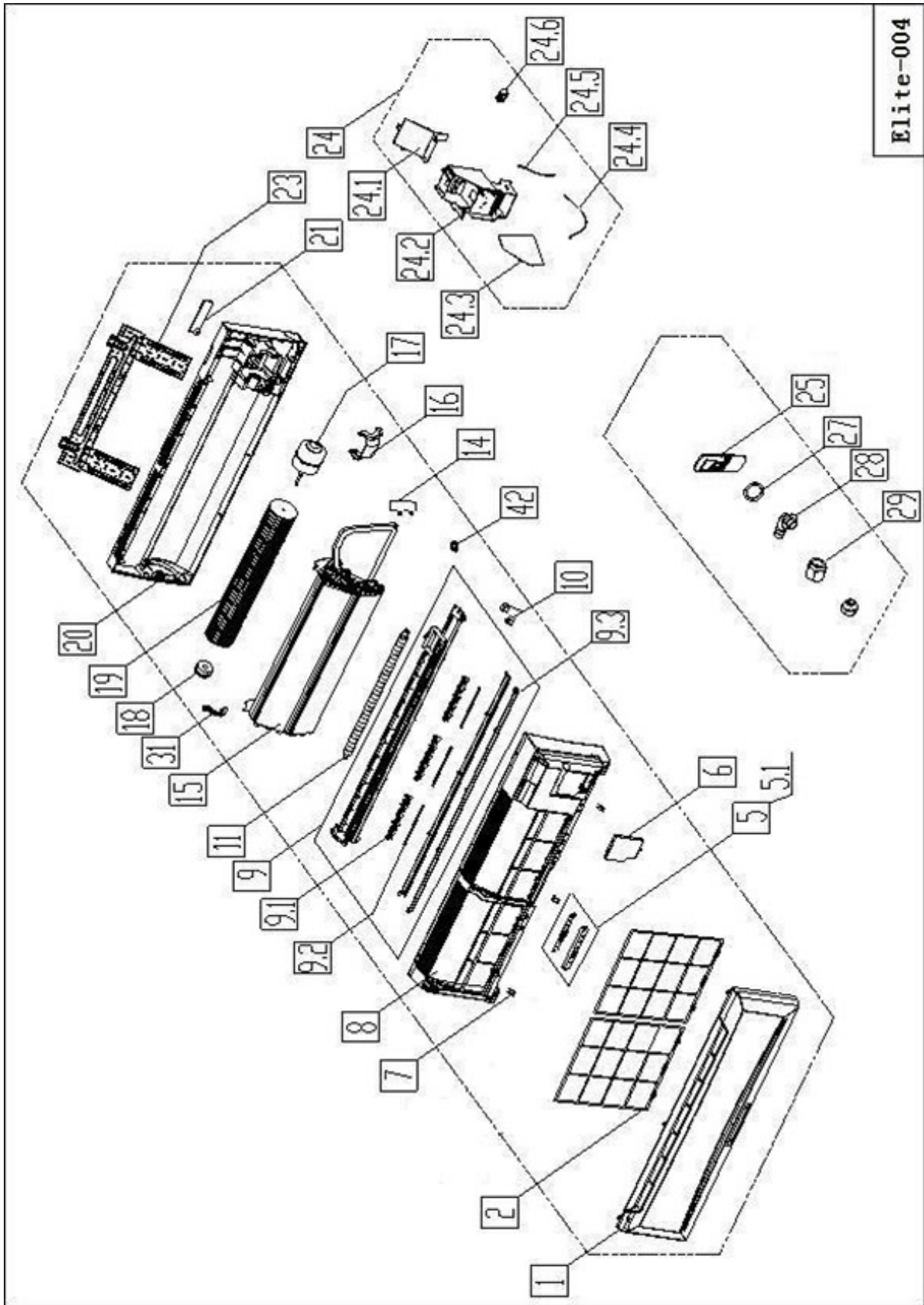
----- Manual continues below -----

HEAT CONTROLLER

**REPLACEMENT
PARTS LIST**

**Single Zone Heat Pump
Ductless Mini-Splits
B-SMH12SC
Indoor Evaporator**

EXPLODED VIEW



REPLACEMENT PARTS

| Location | Part Name | Quantity | Part No. |
|----------|--|----------|--------------|
| 1 | Panel assembly | 1 | 2011327A1861 |
| 2 | Air filter | 2 | 201130290162 |
| 5 | Display box assembly | 1 | 203332790077 |
| 5.1 | Display board assembly | 1 | 201332790089 |
| 6 | Cover of indoor electronic control box | 1 | 201130290288 |
| 7 | Screw cap | 3 | 201132790396 |
| 8 | Panel frame assembly | 1 | 201132790398 |
| 9 | Air outlet assembly | 1 | 201132790397 |
| 9.1 | Vertical vane | 12 | 201130290212 |
| 9.2 | Louver holder | 3 | 201130210066 |
| 9.3 | Horizontal louver | 1 | 201132790582 |
| 9.3 | Horizontal louver | 1 | 201132790581 |
| 10 | Louver motor | 1 | 202400200025 |
| 11 | Drain hose | 1 | 201101020038 |
| 14 | Waterproof board | 1 | 201130310350 |
| 15 | Evaporator assembly | 1 | 201532890111 |
| 16 | Fan motor cover | 1 | 201132800135 |
| 17 | Asynchronous motor | 1 | 202400300045 |
| 18 | Bearing base | 1 | 202732400001 |
| 19 | Cross flow fan | 1 | 201100200014 |
| 20 | Chassis assembly | 1 | 201132800120 |
| 21 | Pipe clamp board | 1 | 201130100204 |
| 23 | Installation plate | 1 | 201232400000 |
| 24 | Electronic control box assembly | 1 | 203332590054 |
| 24.1 | Cover of electronic control box | 1 | 201132800161 |
| 24.2 | Electronic control box | 1 | 201130210069 |
| 24.3 | Main control board assembly | 1 | 201332590287 |
| 24.4 | Indoor temperature sensor assembly | 1 | 202432390005 |
| 24.5 | Pipe temperature sensor assembly | 1 | 202301300584 |
| 24.6 | Terminal strip | 1 | 202301400064 |
| 25 | Remote Controller | 1 | 203355091202 |
| 27 | Seal ring | 1 | 202720090001 |
| 28 | Drain connecter | 1 | 201101020011 |
| 29 | Nut | 1 | 201600320002 |
| 29 | Nut | 1 | 201600320000 |
| 31 | Fixing board of bear | 1 | 201130510515 |
| 42 | Fix clamp of temperature sensor | 1 | 201102000305 |

Due to ongoing product improvements, specifications and dimensions are subject to change and correction without notice or incurring obligations. Determining the application and suitability for use of any product is the responsibility of the installer. Additionally, the installer is responsible for verifying dimensional data on the actual product prior to beginning any installation preparations.

Incentive and rebate programs have precise requirements as to product performance and certification. All products meet applicable regulations in effect on date of manufacture; however, certifications are not necessarily granted for the life of a product. Therefore, it is the responsibility of the applicant to determine whether a specific model qualifies for these incentive/rebate programs.

HEAT CONTROLLER

1900 Wellworth Ave., Jackson MI 49203 • Ph. 517-787-2100 • www.heatcontroller.com

A  Company