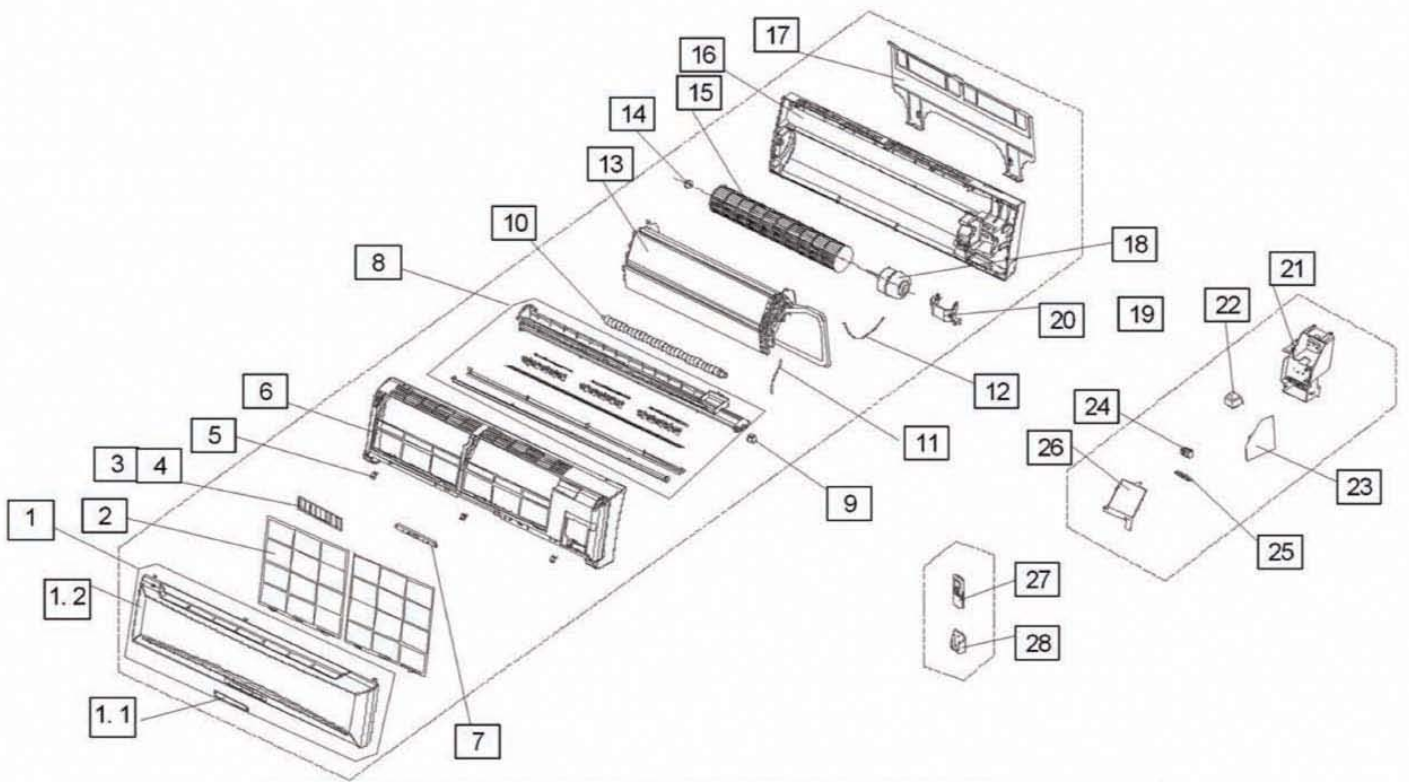


HEAT CONTROLLER, INC.

**REPLACEMENT  
PARTS**

**“S” Series Mini-Split  
Version B**

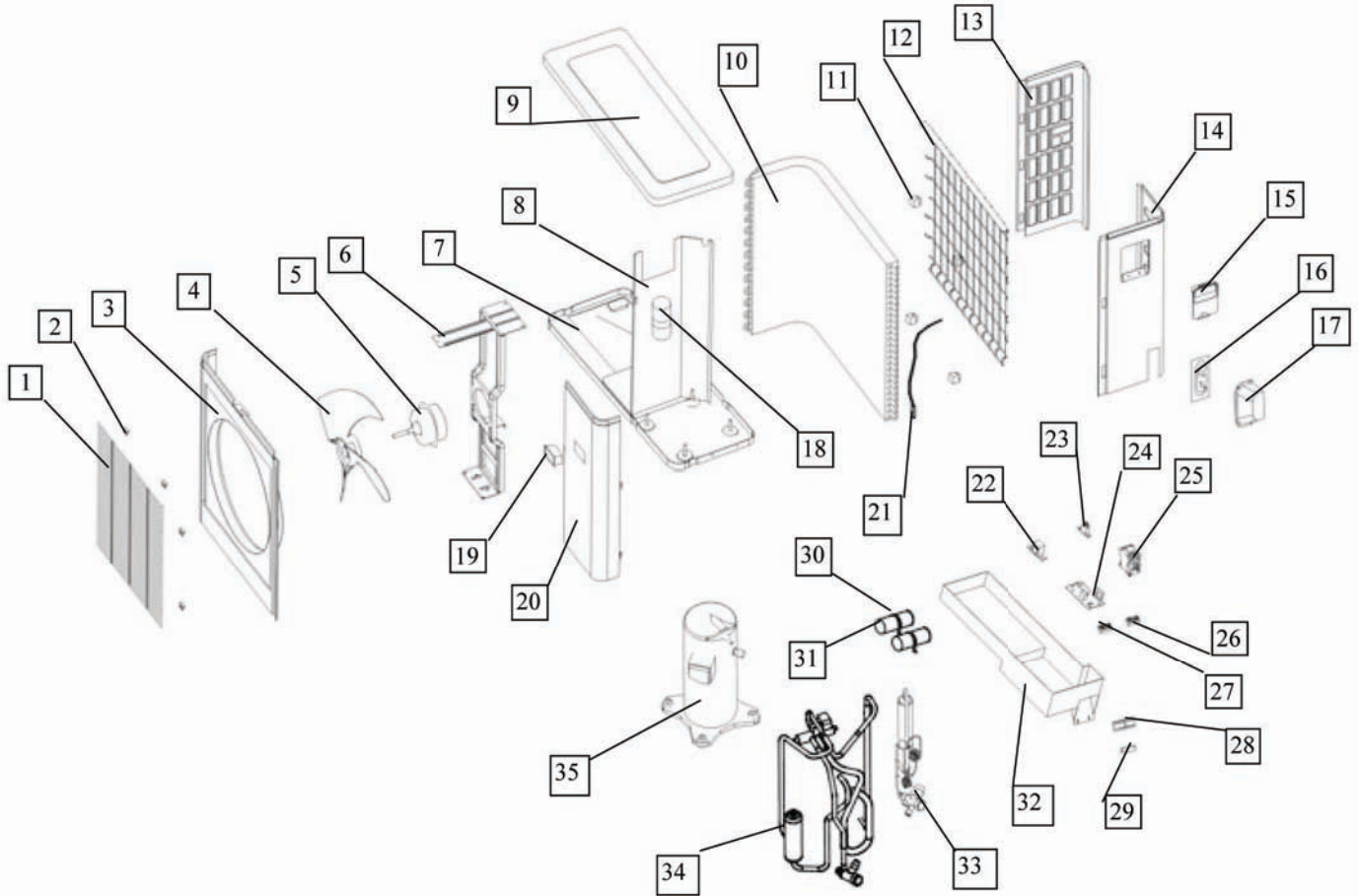
**SMH24SB-1**



No.	Part Name	Quantity	Part Number	BOM code
1	Front panel	1	10312122438	201133190011
1.1	Indicator for LED	1	10312122507	201130790210
1.2	Panel Ass'y	1	10312122506	201133190010
2	Air filter	2	15030111003	201130790202
3	Air cleaner	1	10336111051	201130790130
4	Air cleaner holder	1	10336111052	201130790129
5	Screw cap	4	10336111003	201130790131
6	Panel frame	1	15030111004	201130790207
7	Display board assy	1	15030121003	203330790014
8	Air out frame assy	1	15030111006	201130790206
9	Louver motor	1	10105111047	202400200004
10	Drain hose	1	31607111010	201130000011
11	Indoor temp sensor	1	10312122433	202432390005
12	Evaporator temp sensor	1	11612121059	202432390004
13	Evaporator	1	15030111011	201530790075
14	Bearing holder	1	10336111037	201101090004
15	Cross flow fan, assy	1	10336111036	201100290011
16	Chassis	1	15030111010	201130790205
17	Installation plate	1	10336111042	201230790026
18	Fan motor	1	10321111067	202400410650
19	Corner board for chassis	1	15030111014	201130790204
20	Motor cover l	1	10321111068	201133090035
21	E-Parts box	1	10312122435	201133090113
22	Transformer	1	10118121232	202300990003
23	Main control board	1	10312122437	201333090027
24	Wire joint, 4p	1	10609111006	202301450105
25	Power cord clamp	1	10336111056	201130790120
26	Cover for E-parts box	1	10312122436	201133090112
27	Remote Controller (FAHRENHEIT)	1	10321121031	203355090263
28	Holder for remote controller	1	10718121009	201131390022
29	Connection pipe for drainage	1	11609121003	201101020011
30	Sealing ring	1	31009321021	202720090001
31	Copper nut, TLM-B02	1	10909121013	201600320001
32	Copper nut, TLM-D04	1	11324113804	201600320003

No.	Part Name	Quantity	Part Number	BOM Code
27	Remote Controller (CELSIUS)	1	15007121004	203355090179





No.	Part Name	Quantity	Sale code	BOM code
1	Front net	1	10321111044	201235390011
2	Clamp for front net	8	10112121801	201135110801
3	Front clapboard	1	10336121801	201245320937
4	Propeller fan	1	10336111801	201100300202
5	Fan motor	1	10321111818	202400430113
6	Holder for fan motor	1	10336121802	201235490027
7	Chassis	1	10336111820	201245300260
8	Separating board	1	50224123803	201245320908
9	Cover	1	10336121803	201245320936
10	Condenser	1	10336111837	201538090003
11	Underlay for rear net	4	10118121818	202745500001
12	Rear net	1	10224121813	201145320902
13	Left clapboard	1	10224121828	201245300063
14	Rear right clapboard	1	10318121016	201235490047
15	Big handle	1	10309121003	201235290217
16	Installation plate for valves	1	11426432807	201245370923
17	Water collector	1	10336111804	201135490001
18	Refrigerant container	1	10924121861	201601000127
19	Small handle	1	10224121809	201145400003
20	Front right clapboard	1	10224121825	201245320903
21	Condenser temp sensor	1	11442122804	202441200200
22	Transformer	1	11018121010	202300900080
23	Fan motor capacitor	1	10718121804	202401100404
24	Main control board	1	15024121801	201335490110
25	Contactor	1	10121121806	202300850004
26	Wire joint for multiplexer	2	10121121809	202301450035
27	Wire joint	1	10309121011	202301450099
28	Clamp for wiring	1	10118121823	201245400027
29	Washer for wire joint	1	10112121817	201135000004
30	Capacitor clamp	2	31116313015	201200100009
31	Compressor capacitor	2	10118121820	202401090017
32	Installation board for E-parts	1	10318121017	201235490050
33	Liquid pipe valve,assy	1	10312121554	201638090086
	Liquid pipe valve	1	10336111827	201600740297
	4-way valve,assy	1	10312121555	201638090085
34	Gas pipe valve	1	10321111821	201600720397
	4-way valve	1	12812121801	201600690011
35	Compressor	1	10321111822	201400630510
36	Copper nut, TLM-D04	1	11324113804	201600320003
37	Copper nut, TLM-B02	1	10909121013	201600320001

**Design, materials, performance data and components  
subject to change without notice.**

## **HEAT CONTROLLER, INC.**

1900 Wellworth Ave Jackson, Michigan 49203 • Ph. 517-787-2100 • Fax 517-787-9341

**THE QUALITY LEADER IN CONDITIONING AIR**

**[www.heatcontroller.com](http://www.heatcontroller.com)**