

This Owner's Manual is provided and hosted by [Appliance Factory Parts](#).



COMFORT-AIRE REG-81M Owner's Manual

[Shop genuine replacement parts for COMFORT-AIRE
REG-81M](#)



[Find Your COMFORT-AIRE Air Conditioner Parts - Select From 599 Models](#)

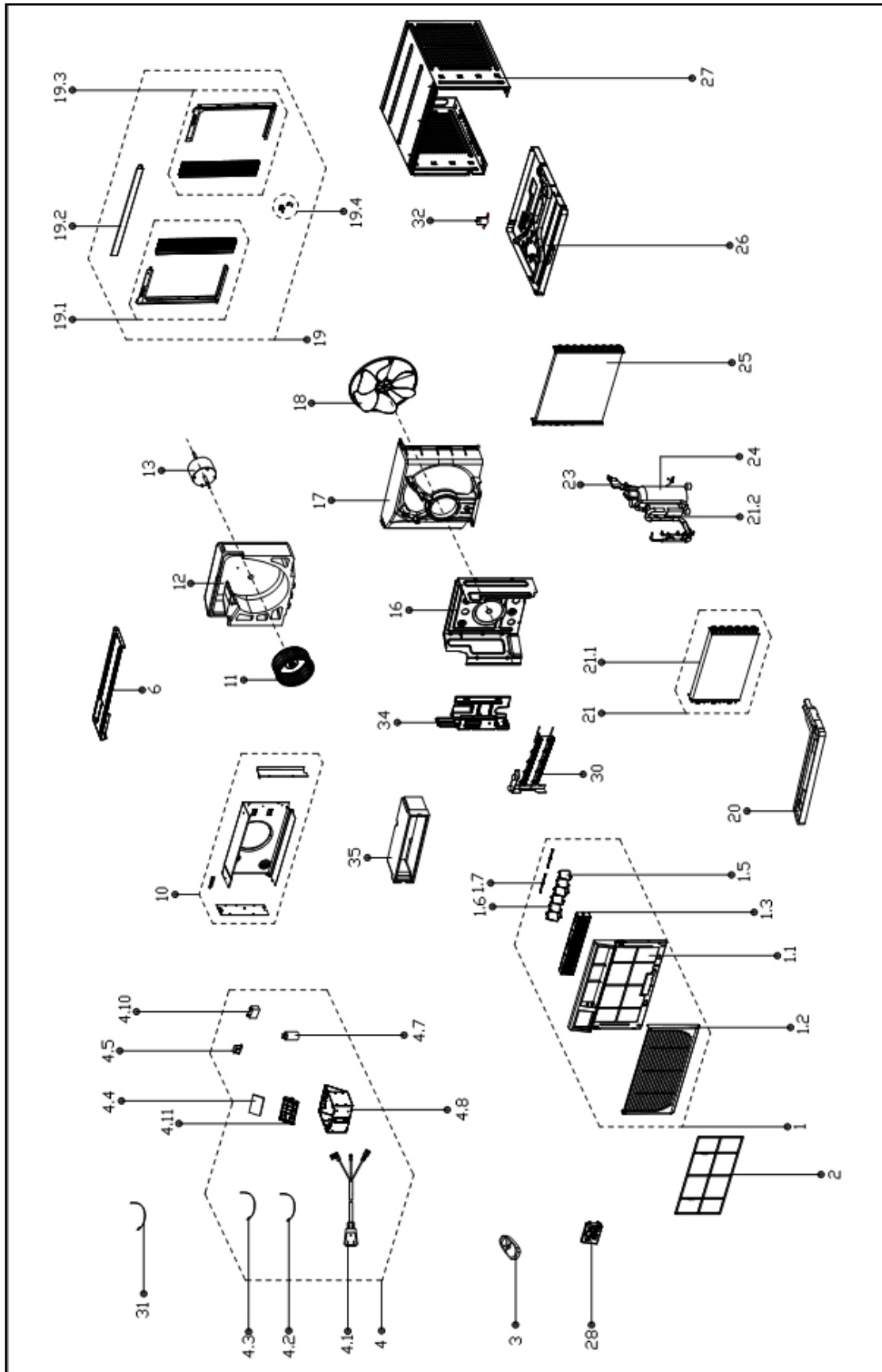
----- Manual continues below -----

HEAT CONTROLLER

**REPLACEMENT
PARTS LIST**

**Room Air Conditioner with R-410A:
REG-81M**

EXPLODED VIEW



REPLACEMENT PARTS

Location	Part Name	Quantity	Part No.
1	Panel assembly	1.0	12120300A00817
1.1	Panel frame	1.0	12120300A00779
1.2	Panel	1.0	12120300000060
1.3	Air Out Frame	1.0	12120300A00609
1.5	Louver	4.0	12120300000720
1.6	Louver	2.0	12120300000755
1.7	Louver Holder	2.0	12120300000990
2	Filter	1.0	12100204000202
3	Remote controller	1.0	17317000A03529
4	E-Parts Box Assembly of Upper Air-out Window Series - E-Parts	1.0	17220300000735
4.1	Power Supply Cable Subassembly	1.0	17401202000044
4.3	Temperature Sensor	1.0	11201007000126
4.4	Main Control Board Subassembly(Sticker)	1.0	17120300000425
4.5	Power Transformer	1.0	11203103000120
4.7	Dual Capacitor	1.0	17400104000003
4.8	Structure Subassembly of Electrical Control Box	1.0	12220300000510
4.10	Combined Capacitor	1.0	17400104000003
4.11	Mounting rack of main control panel	1.0	12120300000521
6	Front clapboard	1.0	12220300000525
10	Air inlet aperture board subassembly	1.0	12220300000546
11	Centrifugal Fan	1.0	12100103000091
12	Rear Air Duct Foam Subassembly	1.0	12820300000051
13	Single-phase Asynchronous Motor	1.0	11002012004748
16	Front Boarding assembly	1.0	12220300000571
17	Rear barrier Subassembly	1.0	12120300000567
18	Axial fan	1.0	12100105000081
19	Installing Accessories	1.0	12020300000013
19.1	Left shutter frame Subassembly	1.0	12120300001293
19.2	Upper Shutter Frame	1.0	12220300000894
19.3	Right Shutter Frame Subassembly	1.0	12120300001359
19.4	Installing Screw Bag of Accessories	1.0	12020300000023
20	Drain Pan	1.0	12820300000058
21	Evaporator assembly Gas valve assembly	1.0	15820300000055
21.1	Evaporator	1.0	15820300000477
24	Fixed speed rotary compressor	1.0	11103010001443
25	Condenser Assembly	1.0	15820300000625
26	Chassis Assembly	1.0	12220300000423
27	Floor Assembly	1.0	12220300000819
28	Structure Subassembly of Display Box	1.0	17220300A01677
30	Electric Heater Assembly	1.0	17402004000032
32	Thermal drain valve	1.0	17400510000001
34	Front left Boarding	1.0	12220300000580
35	Front Air Duct Foam	1.0	12820300000072
30	Display label	1	16020300A03764

Due to ongoing product improvements, specifications and dimensions are subject to change and correction without notice or incurring obligations. Determining the application and suitability for use of any product is the responsibility of the installer. Additionally, the installer is responsible for verifying dimensional data on the actual product prior to beginning any installation preparations.

Incentive and rebate programs have precise requirements as to product performance and certification. All products meet applicable regulations in effect on date of manufacture; however, certifications are not necessarily granted for the life of a product. Therefore, it is the responsibility of the applicant to determine whether a specific model qualifies for these incentive/rebate programs.

HEAT CONTROLLER

1900 Wellworth Ave., Jackson MI 49203 • Ph. 517-787-2100 • www.heatcontroller.com

A  Company