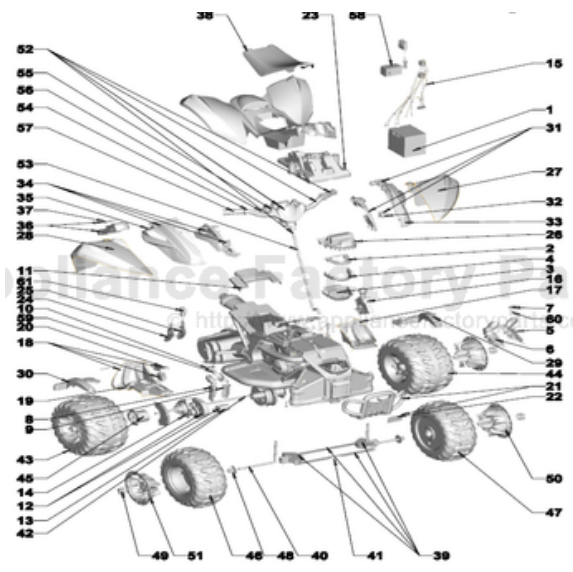


This Owner's Manual is provided and hosted by [Appliance Factory Parts](#).



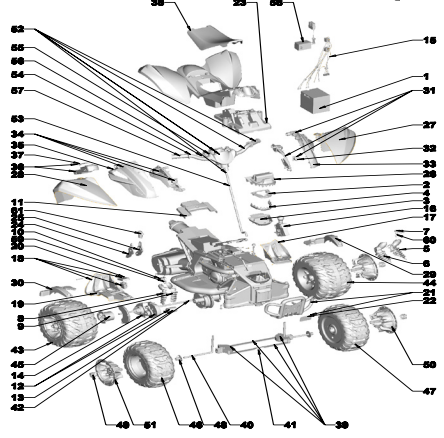
FISHER PRICE N3088 Owner's Manual

[Shop genuine replacement parts for FISHER PRICE
N3088](#)



[Find Your FISHER PRICE Ride On Parts - Select From 999 Models](#)

----- Manual continues below -----



N0457 (CAN # N3088)
 A. T. Rex
 12 Volt Advanced Series

Age Range: 3+
 Weight Limit: 65lbs
 Surfaces: Ultimate Terrain
 Speed: 2.5 MPH Forward/Reverse
 5.0 MPH Forward

Colors: Orange Body, Black Wheels
 Intro: 2008

Suggested Retail: \$315.99
 Box Dimensions: 31.5" x 31.75" x 46", 55lb
 Warranty: One Year Vehicle
 Six Months Battery



Item	Part #	Description	QTY	Item	Part #	Description	QTY
1	00801-1460	12v Battery (1)	1	39	M7873-9199	STEERING LINKAGE ASSEMBLY	1
2	*SEE #3	LOWER TEETH RETAINER	1	40	M7873-4679	FRONT AXLE	2
3	3800-8821	LOWER TEETH BASE W/FRET	1	41	00801-1621	AXLE CAP RETAINER .437	2
4	M7873-2709	BOTTOM TEETH FOR AT REX	1	42	M7873-4629	REAR AXLE	1
5	M7873-4619	SPRING FOR AT REX	1	43	M7873-2759	RIGHT REAR WHEEL	1
6	*SEE # 5	SPRING FOR AT REX	1	44	M7873-2779	LEFT REAR WHEEL	1
7	M7873-2689	LEFT CLAW	1	45	74460-2249	WHEEL DRIVER TO RIB	2
8	*SEE # 5	SPRING FOR AT REX	1	46	M7873-2789	RIGHT FRONT WHEEL	1
9	*SEE # 5	SPRING FOR AT REX	1	47	M7873-2759	LEFT FRONT WHEEL	1
10	M7873-2699	RIGHT CLAW	1	48	B9785-2229	.437 BUSHING	2
11	N/A	PLATE ADAPTER	1	49	M7873-2519	CENTER HUBCAP	4
12	00968-2916	#7 MOTOR GEARBOX ASSM	2	50	M7873-2509	LEFT HUBCAP	2
13	00968-2705	MOTOR PINION	1	51	M7873-2569	RIGHT HUBCAP	2
14	00968-2807	#7 GEAR BOX (16 TOOTH) BLACK	1	52	N0457-9729	HANDLEBAR W/STREERING COLUMN	1
15	M7873-9759	MAIN WADNESS FOR AT REX	1	53	*SEE # 52	STEERING COLUMN	1
16	M7873-9359	SHIFTER ASSM.	1	54	*SEE # 52	HANDLEBAR	1
17	M7873-2459	LEFT FOOTREST	1	55	*SEE # 52	DASH REAR	1
18	M7873-9479	RIGHT FOOTREST W/ FOOTBOARD ASSM	1	56	N/A	DASH FRONT	1
19	*SEE # 18	RIGHT FOOTREST	1	57	J5248-2439	HANDGRIP	2
20	N/A	PEDAL	1	58	00801-1480	12V FUSED CHARGER W/PROBE	1
21	M7873-9539	BRUSHGUARD W/ LOGO FOR AT REX	1	59	N/A	LEFT CLAW SLEEVE	1
22	00801-1518	LARGE PW-EMBLEM	1	60	N/A	RIGHT CLAW SLEEVE	1
23	N/A	HEAD BASE	1	61	M7873-2239	CAP, HANDLE LEFT	1
24	*SEE # 31	LIFT HANDLE RIGHT	1	62	M7873-2249	CAP, HANDLE RIGHT	1
25	*SEE # 31	LIFT HANDLE LEFT	1				
26	N/A	UPPER TEETH	1				
27	N/A	LEFT FENDER	1				
28	N/A	RIGHT FENDER	1				
29	N/A	SUPPORT LEFT FENDER	1				
30	N/A	SUPPORT RIGHT FENDER	1				
31	3800-8837	LIFT HANDLE ASSM.	2				
32	N/A	LENS/EYE	1				
33	N/A	HEAD LEFT	1				
34	N/A	RIGHT HEAD ASSM.	1				
35	N/A	HEAD RIGHT	1				
36	M7873-9349	SOUNDBOX	1				
37	N/A	BATTERY DOOR W/ SCREW	1				
38	M7873-2159	SEAT	1				

Item # and underlined parts are to be purchased and installed by Service Centers only. These items may not be sold directly to consumers by Service Centers or Fisher-Price.

4/3/2009 14:04