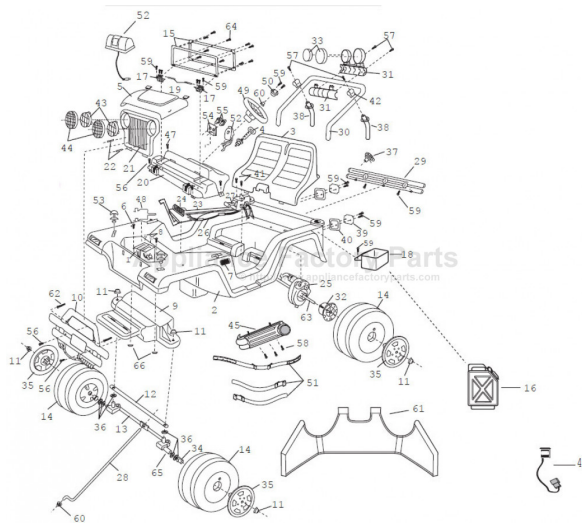


This Owner's Manual is provided and hosted by [Appliance Factory Parts](#).



# FISHER PRICE 78477-9993 Owner's Manual

[Shop genuine replacement parts for FISHER PRICE  
78477-9993](#)



[Find Your FISHER PRICE Ride On Parts - Select From 999 Models](#)

----- Manual continues below -----



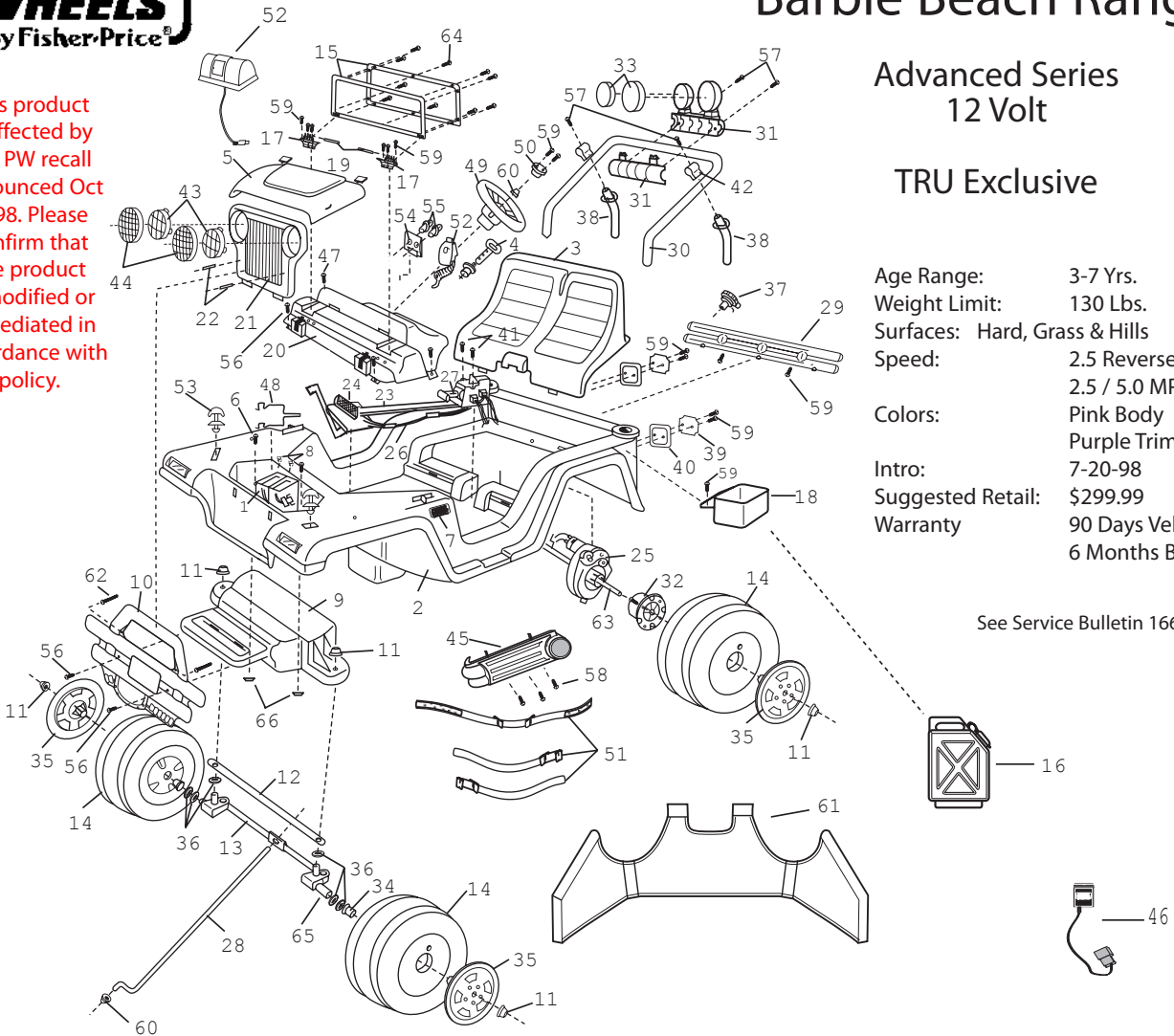
This product is affected by the PW recall announced Oct 1998. Please confirm that the product is modified or remediated in accordance with policy.

# 78477-9993 Barbie Beach Ranger

Advanced Series  
12 Volt

TRU Exclusive

Age Range: 3-7 Yrs.  
Weight Limit: 130 Lbs.  
Surfaces: Hard, Grass & Hills  
Speed: 2.5 Reverse  
2.5 / 5.0 MPH Forward  
Colors: Pink Body  
Purple Trim  
Intro: 7-20-98  
Suggested Retail: \$299.99  
Warranty: 90 Days Vehicle  
6 Months Battery



Rev. 06/3/08

Item No.	Description	Part No.	Qty.	Item No.	Description	Part No.	Qty.	Item No.	Description	Part No.	Qty.
1	*Battery	00801-0712	2	Bumper	N/A	78477-2039	1	Screw (Black/Blunt)	0801-0469	4	
2	Body (N/A)	78477-2109	1	30	Sport Bar	76960-9219	1	58	#8 x 3/4" Screw (Black)	0801-0223	6
3	Seat	78477-2309	1	31	KC™ Light Rack - Assembly	78477-9199	1	59	#8 x 1" Screw (Black) N/A	0801-0224	15
4	Key/Housing Assembly	78490-9369	1	32	Wheel Driver	74460-2249	2	60	.354 Cap Nut (Black)	0801-0604	2
5	Hood N/A	78477-6119	1	33	KC™ Light Cover	76960-2319	2	61	Canopy Assembly with Bag	78477-9599	1
6	5/16" x 51/2" Hex Bolt N/A	0801-0605	2	34	Axle Bushing	74550-2689	2	62	#8 x 4" Screw (Black) N/A	0801-0516	2
7	PW Emblem	74460-9069	2	35	Hubcap	74440-2579	4	63	Rear Axle	74440-4519	1
8	Thermal Fuse.	0801-0711	2	36	7/16" Washer	0801-0196	4	64	#8 x 1-1/4" Screw (Black) N/A	0801-0216	10
9	Front Module N/A	78477-2019	1	37	Gas Cap N/A	78477-2089	1	65	Front Axle	74440-4509	2
10	Brushguard N/A	78477-2189	1	38	Sport Bar Support	76960-2629	2	66	5/16" Hex Nyloc Nut N/A	0801-0193	2
11	.437 Cap Nut (White)	0801-0227	6	39	Taillight Lens Set	73233-2279	1	<b>PARTS NOT SHOWN</b>			
12	Cross Bar	74460-4419	1	40	Taillight Housing Set N/A	78477-2759	1		Label Main Sheet	78477-0310	1
13	Steering Linkage Assy.	74440-9419A	1	41	#8 x 7/8" Screw (Silver)	0801-0228	2		*Literature Bag N/A	78477-9019	1
14	Wheel, 14"	B2489-2459	4	42	Sport Bar Bracket Set	78477-2179	1		*Large Parts Bag	78477-9359	1
15	Windshield Set Front/Rear	N/A	1	43	Headlight Lens (Blue)	74450-2279	2		*Small Parts Bag N/A	78477-9249	1
16	Water Bottle with Cap	78608-2239	1	44	Headlight Lens Guard N/A	78477-2339	2		#7 Gearbox w/o Motor	<b>00968-2805</b>	<b>2</b>
17	Windshield Bracket N/A	78477-2639	2	45	Side Pipe Set N/A	78477-9049	1		Motor w/Pinion	<b>00968-2701</b>	<b>2</b>
18	Water Bottle Holder N/A	78477-2149	1	46	*12v Charger	00801-0973	1		Clip Adhesive	0801-0313	1
19	Hinge Pin	0801-0257	2	47	#10 x 1/2" Screw (Black N/A)	0801-0540	2		*Use & Care Manual	78477-0920	1
20	Dash N/A	78477-2689	1	48	*Battery Retainer	78490-4019	1		<b>Footswitch</b>	<b>00801-0933</b>	<b>1</b>
21	Grille N/A	78477-2849	1	49	Steering Wheel N/A	78477-2379	1		1/4" x 1-1/2" Roll Bar Screws (N/A)	0801-0467	2
22	Brushguard Spacer	78477-2069	2	50	Steering Wheel Cap	74460-2069	1		Brushguard Spacer Tube	74460-2069	2
23	Channel Cover	78477-2289	1	51	Seatbelt Set	76960-5339	1		*Hardware Bag		1
24	Footboard Assembly N/A	78477-9829	1	52	Siren/Microphone	78477-9449	1				
<b>25</b>	<b>*#7 Gearbox w/Motor</b>	<b>00968-2905</b>	<b>2</b>	53	Hood Latch	76960-9419	2				
<b>26</b>	<b>*Harness Assembly</b>	<b>78490-9799</b>	<b>1</b>	54	Knob Plate N/A	78477-2719	1				
27	Shifter Assembly	N/A	1	55	Dash Knob	74550-2719	2				
28	Steering Column	74460-4129	1	56	#10 x 1" Screw (Black)	0801-0220	4				
29			Rear	57	#6 x 1-1/2"						

\*See Service Bulletin 166

N/A = Not Available

**Bold and Underlined parts are to be purchased and installed by Service Centers only. These items may not be sold directly to consumers by Service Centers or Fisher-Price.**