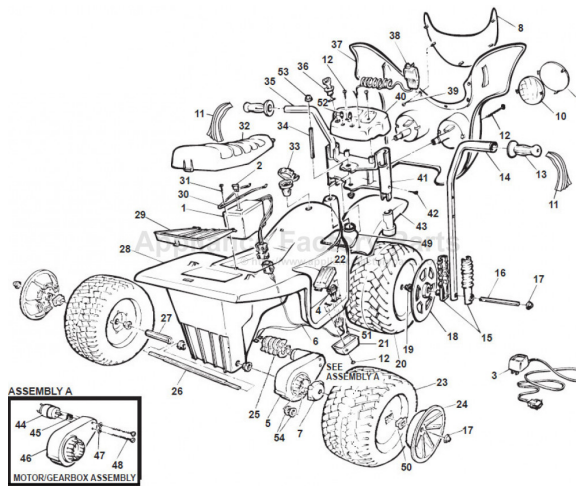


This Owner's Manual is provided and hosted by [Appliance Factory Parts](#).



FISHER PRICE 74850-9993 Owner's Manual

[Shop genuine replacement parts for FISHER PRICE
74850-9993](#)



[Find Your FISHER PRICE Ride On Parts - Select From 999 Models](#)

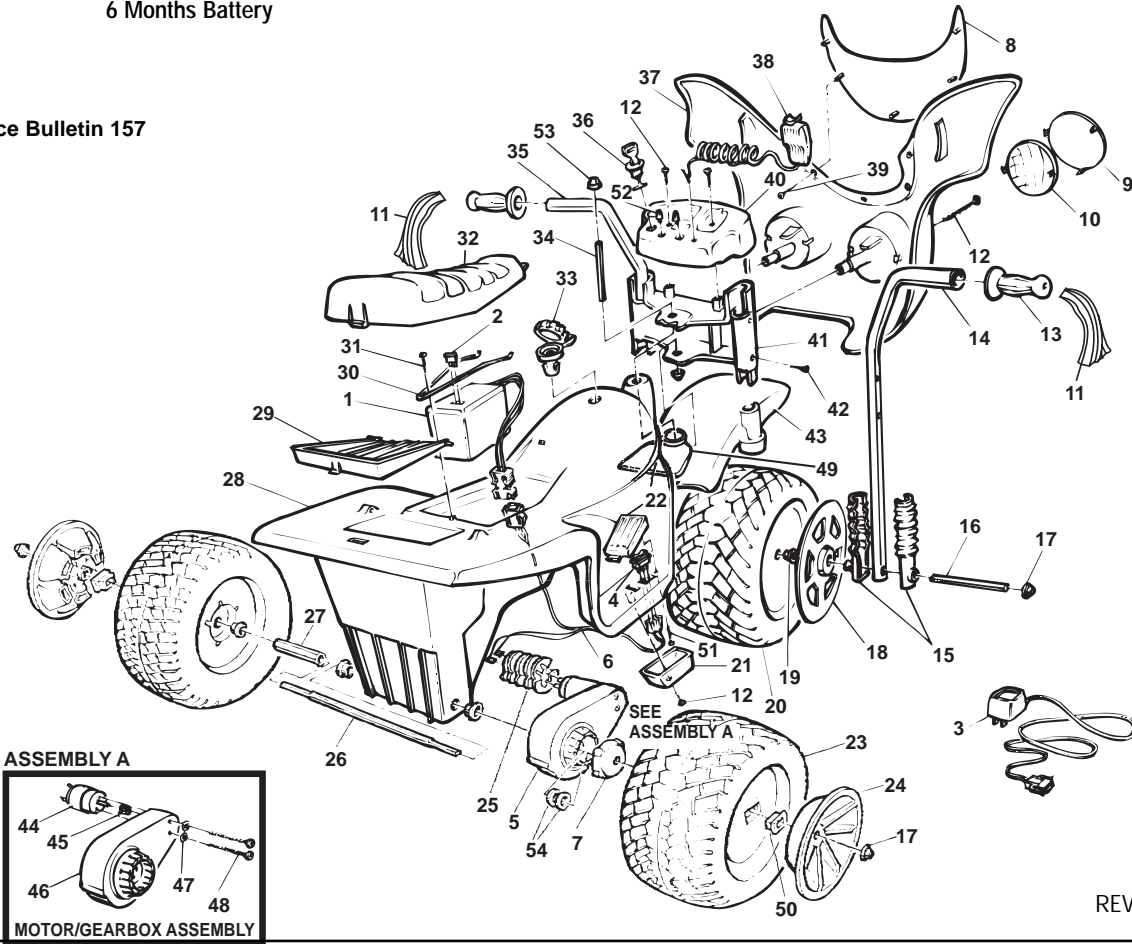
----- Manual continues below -----

Age Range: 1-1/2 TO 4 Yrs.
 Weight Limit: 50 Lbs.
 Surfaces: Hard
 Speed: 2.5 MPH Forward
 Colors: Yellow Body & Fairing
 Pink Wheels & Seat
 Blue Hubcaps & Trim
 Intro: 1993
 Warranty: 90 Days Vehicle
 6 Months Battery

74850-9993 / 84850 Minnie Mobile

6 Volt

Service Bulletin 157



REV. 09/11/03

Item No.	Description	Part No.	Qty.	Item No.	Description	Part No.	Qty.	Item No.	Description	Part No.	Qty.
1	Battery	00801-1234	1	23	Rear Wheel subs to wht N/A	78470-2459	2	46	3A Gearbox & Insert	74580-9269	1
2	25 Amp Fuse	0801-0151	1	24	Rear Hubcap N/A			47	Star Washer N/A	0801-0330	2
3	Charger	00801-0975	1		(subs to Lavender)	78470-2589	2	48	Motor Bolt	0801-0269	2
4	*Foot Switch	75527-2709	1	25	Motor Cover	74750-2359	1	49	Flex Plate N/A	74510-2159	1
5	3A Motor/Gearbox Assy	74780-9509	1	26	Rear Axle	74510-4549	1	50	Rectangular Wheel		
6	Wiring Harness N/A	76112-9799	1	27	Axle Spacer Tube N/A	74510-4449	1		Bushing	77410-2679	2
7	Driver N/A	77410-2239	1	28	Body (N/A)	80005-0233	1	51	1" Screw N/A	0801-0273	1
8	Windshield N/A No sub	74510-2179	1	29	Trunk Lid N/A	80001-0327	1	52	Radio Knobs N/A	76115-2189	2
9	Outer Lens Set N/A	74510-9159	1	30	Battery Retainer	74510-4439	1	53	.354 Cap Nut (White)	0801-0548	2
10	Headlight Lens N/A	76871-2279	2	31	#8 x 7/8" Trusshead Screw	0801-0228	1	54	7/16" Washer	0801-0196	2
11	Tassel	73680-2129	2	32	Seat (Sub Lavender) N/A	78470-2309	1	PARTS NOT SHOWN			
12	1-1/2" Screw	0801-0308	2	33	Gas Cap (Sub Laven N/A	78470-2249	1	#6 - 20 x 1" Screw	N/A		
13	Handgrip (Yellow)	74504-2219	2	34	Pivot Pin N/A	74510-4429	1	for Swivel Bracket	0801-0254	1	
14	Right Handlebar N/A	74850-4429	1	35	Left Handlebar N/A	74850-4439	1	7/8" Screw for Flex Plate	0801-0228	2	
15	Shock Set N/A	80001-0328	2	36	Key Housing N/A	74550-2439	1	Handlebar Plugs N/A	74510-2169	4	
16	Front Axle	74510-4519	1	37	Windscreen (Yellow)N/A	80063-0108	1	Main Decal Sheet N/A	80017-0221	1	
17	.437 Cap Nut (White)	0801-0227	4	38	Microphone	74550-9479	1	Literature Bag (N/A)	80034-0476	1	
18	Front Hubcap N/A			39	3/8" Screw N/A	0801-0219	2	Adhesive Harness Clip N/A	0801-0313	1	
	(subs to Lavender)	78470-2579	2	40	Dash ((Sub Lavender) N/A	78470-2699	1	Headlight Decal (N/A)	80017-0047	1	
19	Wheel Spacer	74550-2689	5	41	Swivel Bracket N/A	74850-2129	1	Use & Care Manual N/A	74850-CCCC	1	
20	Front Wheel N/A	78470-2469	1	42	3/4 Screw	0801-0223	4				
	(subs to white 78470 wheel)			43	Fender (Sub Pink) N/A	78470-2259	1				
21	Footboard Cover	78470-2159	1	44	Motor w/Pinion	74590-9539	1				
22	Foot Pedal w/Spring Clip	80047-0007	1	45	Drive Gear	74550-2269	1				

Bold and Underlined parts are to be purchased and installed by Service Centers only. These items may not be sold directly to consumers by Service Centers or Fisher-Price.

* See Service Bulletin 157

N/A = Not Available

