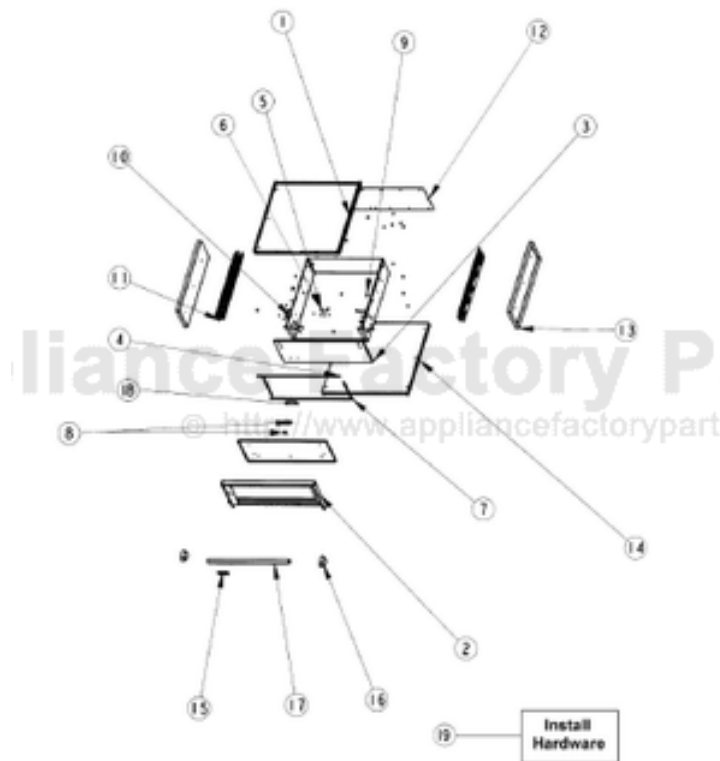


This Owner's Manual is provided and hosted by Appliance Factory Parts.



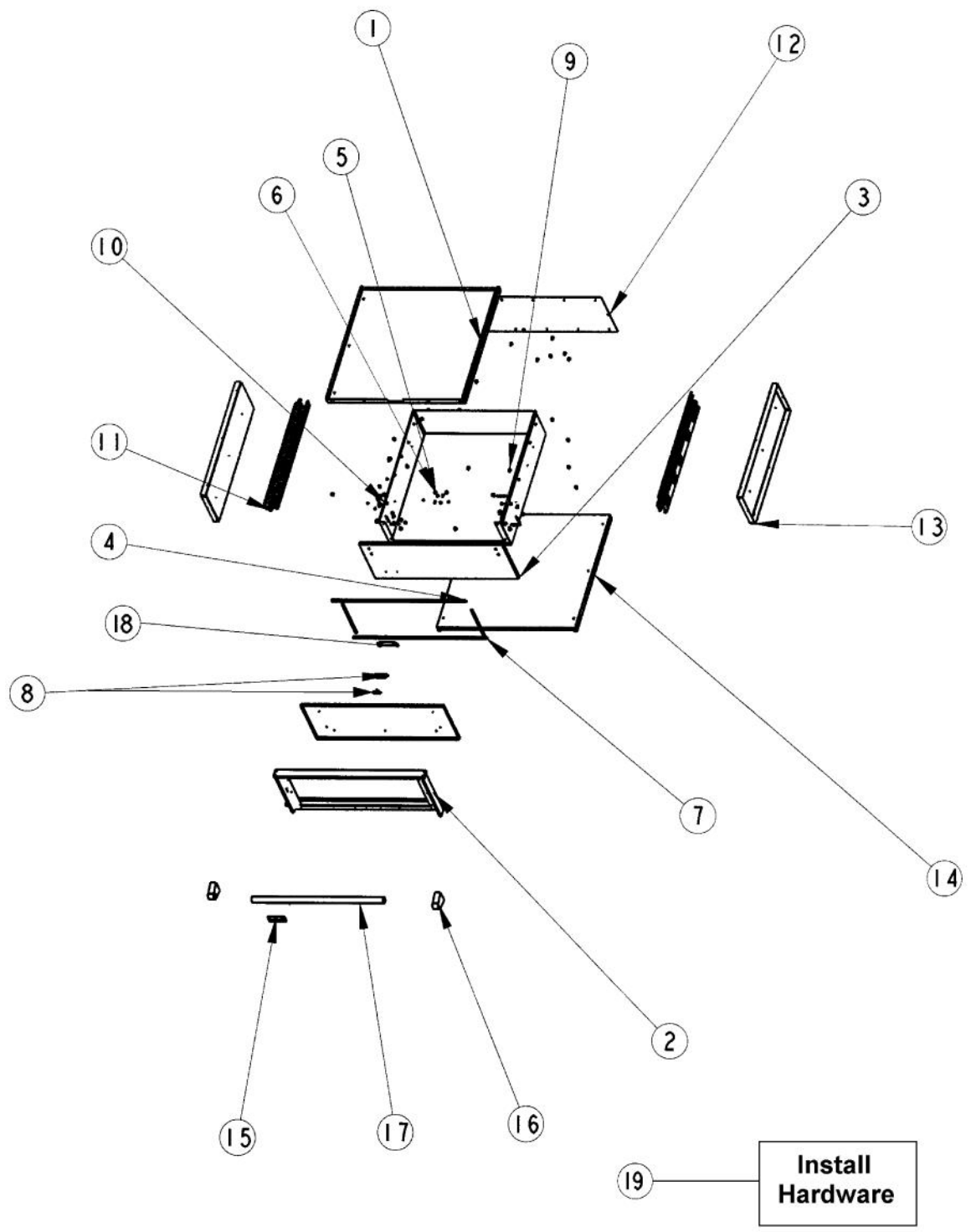
VIKING SD100 Owner's Manual

[Shop genuine replacement parts for VIKING SD100](#)

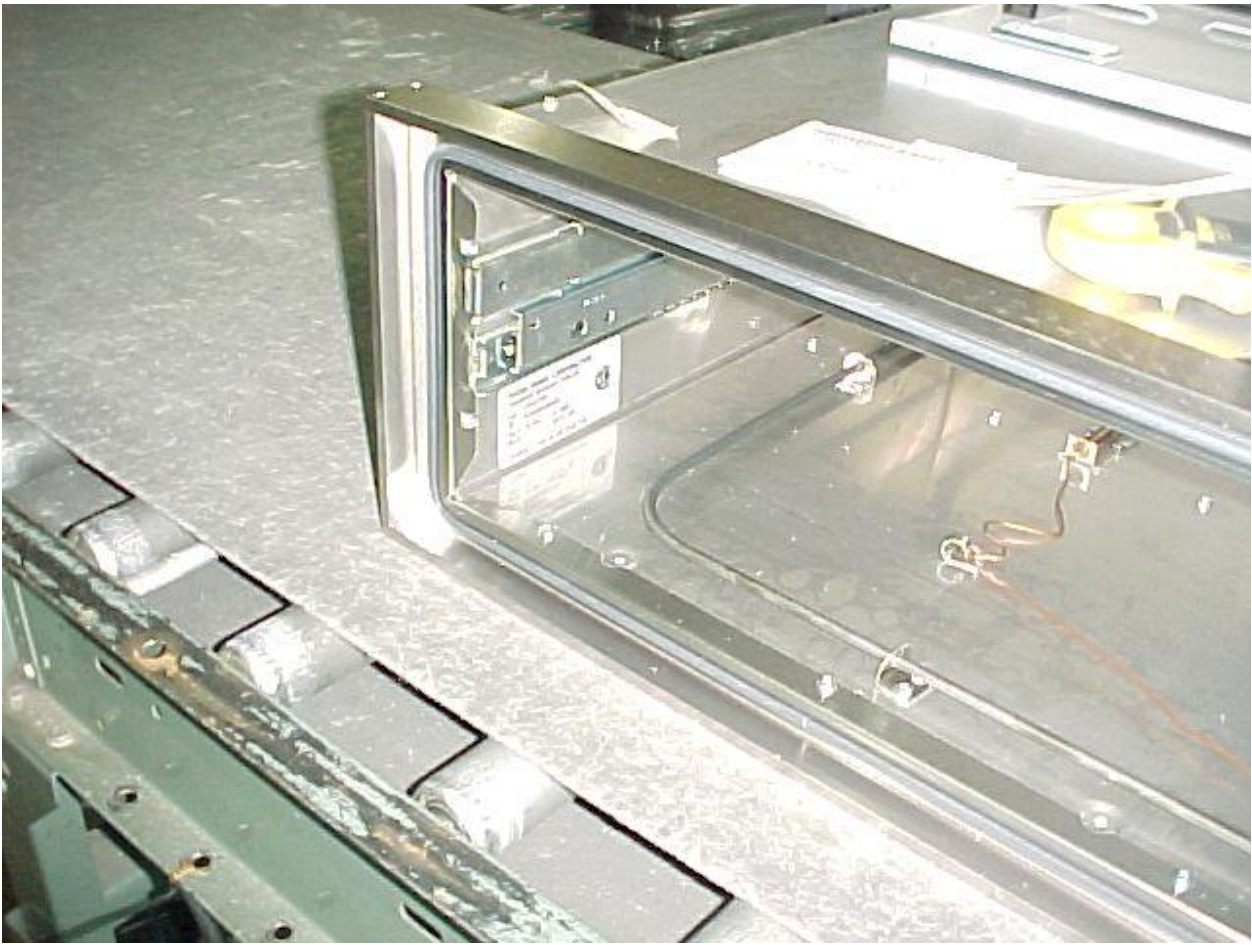


[Find Your VIKING Grill Parts - Select From 210 Models](#)

----- Manual continues below -----



Ref #	Part Number	Qty.	Description
1	G3107636		TOP ASSEMBLY (SD100TSS)
2	G3207639		TRIM ASSEMBLY 30 (SD100T)
3	G3207642SS		DRAWER ASSEMBLY 30 (SD100T) XSSX
	G3207642SSBR		DRAWER ASSEMBLY 30 (SD100T) SSBR
4	PB070142		GASKET 30`` (SD100T)
5	PD020119		8-32X3/8 PH CTR. MACH.SCREW S.S.
6	PD030098		8-32 HEX KEP NUT S.S.
7	PB070144		SIDE GASKET
8	PE050052		LATCH
9	PD020055		NO.10 X 1/2 PAN PHIL. TEK. SS
10	PD020120		8 X 1/2 TEK SHEET METAL SCREW
11	PC080010		SLIDE
12	B1007620		STORAGE DRAWER BACK PANEL 30``
13	B2007618		STORAGE DRAWER SIDE PANEL
14	B2007616		TOP/BOTTOM 30`` (SD100T)
15	PE030114		HANDLE 30 (SD100T)
	PE030114PVD		HANDLE - BR
16	PE030001		BRACKET, DOOR, HANDLE
	PE030001PVD		END CAP DOOR HANDLE XBR
17	PE010142		3 LOGO XBKXXCHROME
	PE010143		3 LOGO BK/BR
18	B2007622		LATCH BRACKET-STORAGE DRAWER
19	PD020080		NO.10 X 1 PH. TRUSS SMS XSSX(AD1820)
			INSTALL HARDWARE - QTY. 4



Ref #	Part Number	Qty.	Description
-------	-------------	------	-------------
