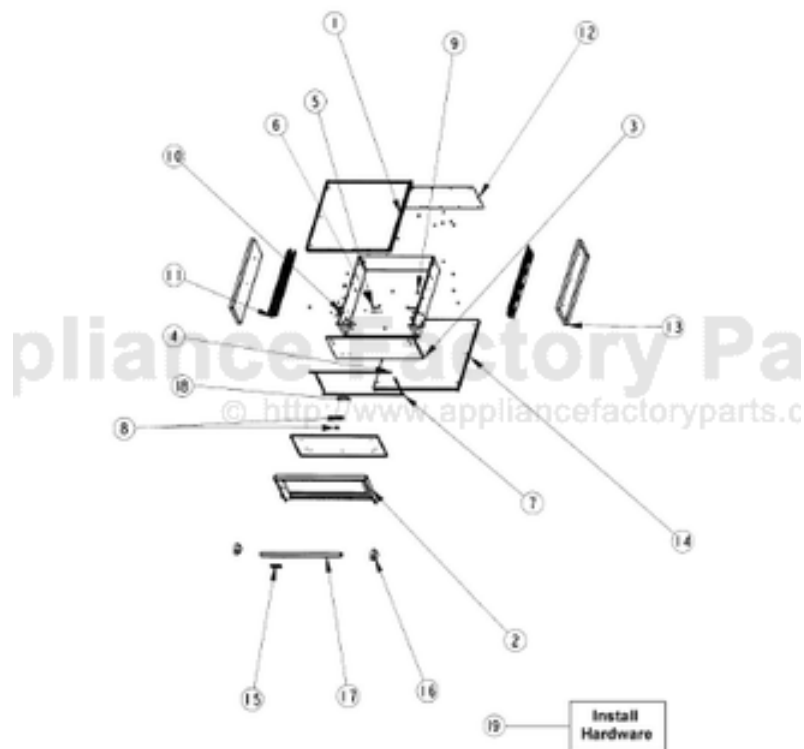


This Owner's Manual is provided and hosted by Appliance Factory Parts.



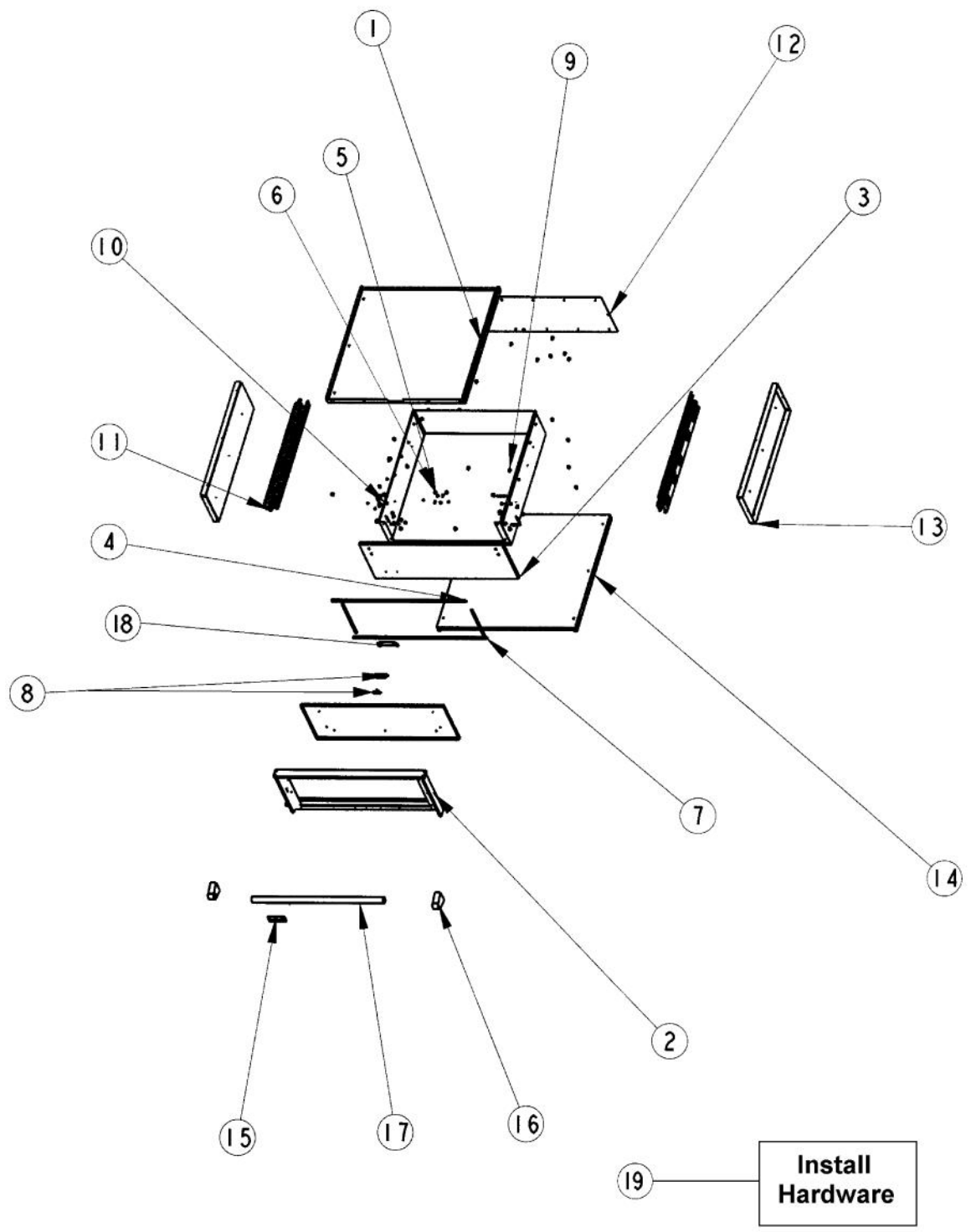
VIKING SD160 Owner's Manual

[Shop genuine replacement parts for VIKING SD160](#)

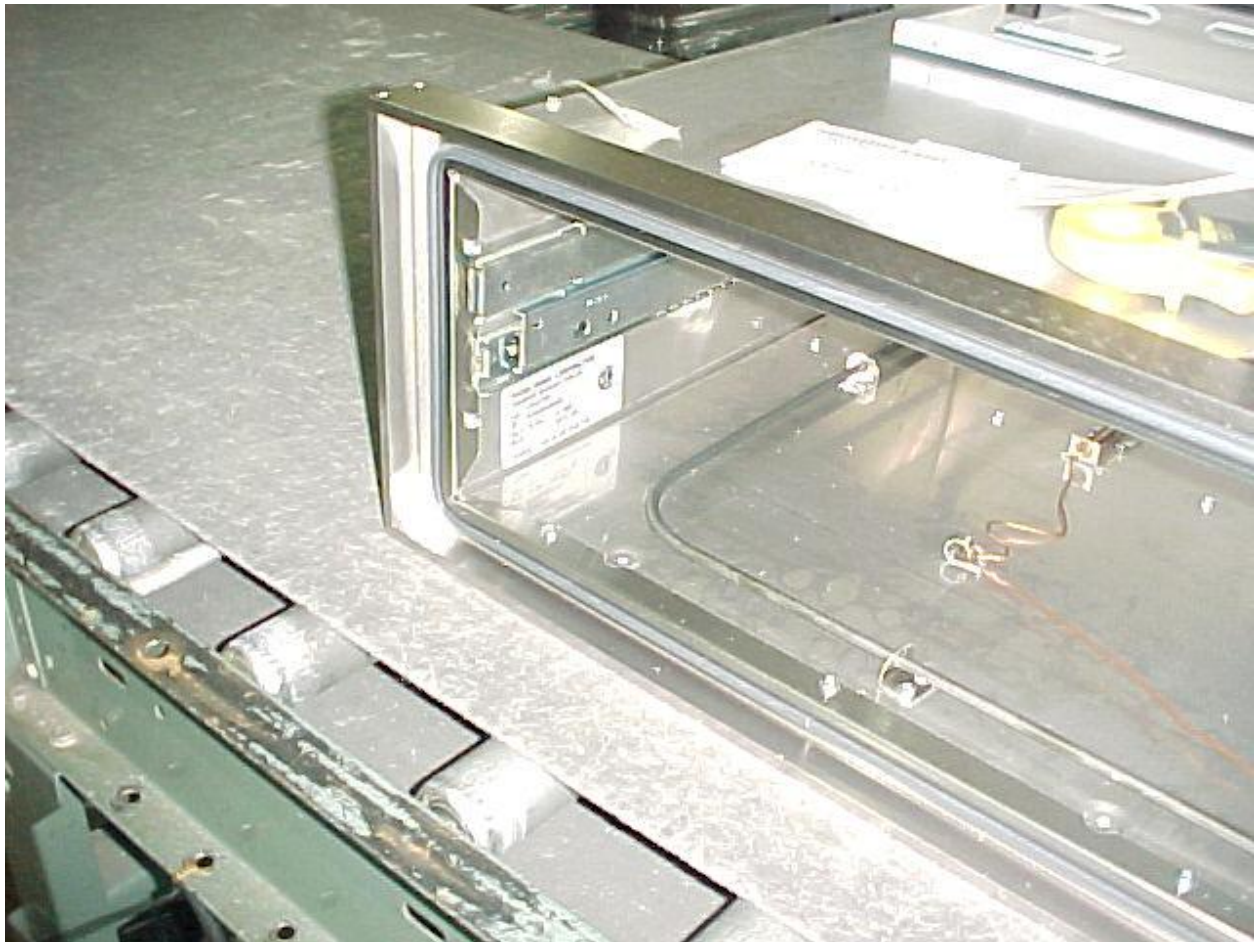


[Find Your VIKING Grill Parts - Select From 210 Models](#)

----- Manual continues below -----



Ref #	Part Number	Qty.	Description
1	G3107635		TOP ASSEMBLY (SD160TSS)
2	G3207638		TRIM ASSEMBLY 36 (SD160T)
3	G3207641SS		DRAWER ASSEMBLY 36 (SD160T) XSSX
	G3207641SSBR		DRAWER ASSEMBLY 36 (SD160T) SSBR
4	PB070141		GASKET 36`` (SD160TSS)
5	PD020119		8-32X3/8 PH CTR. MACH.SCREW S.S.
6	PD030098		8-32 HEX KEP NUT S.S.
7	PB070144		SIDE GASKET
8	PE050052		LATCH
9	PD020055		NO.10 X 1/2 PAN PHIL. TEK. SS
10	PD020120		8 X 1/2 TEK SHEET METAL SCREW
11	PC080010		SLIDE
12	B1007619		STORAGE DRAWER BACK PANEL 36``
13	B2007618		STORAGE DRAWER SIDE PANEL
14	B2007615		TOP/BOTTOM 36`` (SD160T)
15	PE030113		HANDLE 36 (SD160T)
	PE030113PVD		HANDLE - BR
16	PE030001		BRACKET, DOOR, HANDLE
	PE030001PVD		END CAP DOOR HANDLE XBR
17	PE010142		3 LOGO XBKXXCHROME
	PE010143		3 LOGO BK/BR
18	B2007622		LATCH BRACKET-STORAGE DRAWER
19	PD020080		NO.10 X 1 PH. TRUSS SMS XSSX(AD1820) INSTALL HARDWARE - QTY. 4



Ref #	Part Number	Qty.	Description
-------	-------------	------	-------------
