

This Owner's Manual is provided and hosted by [Appliance Factory Parts](#).



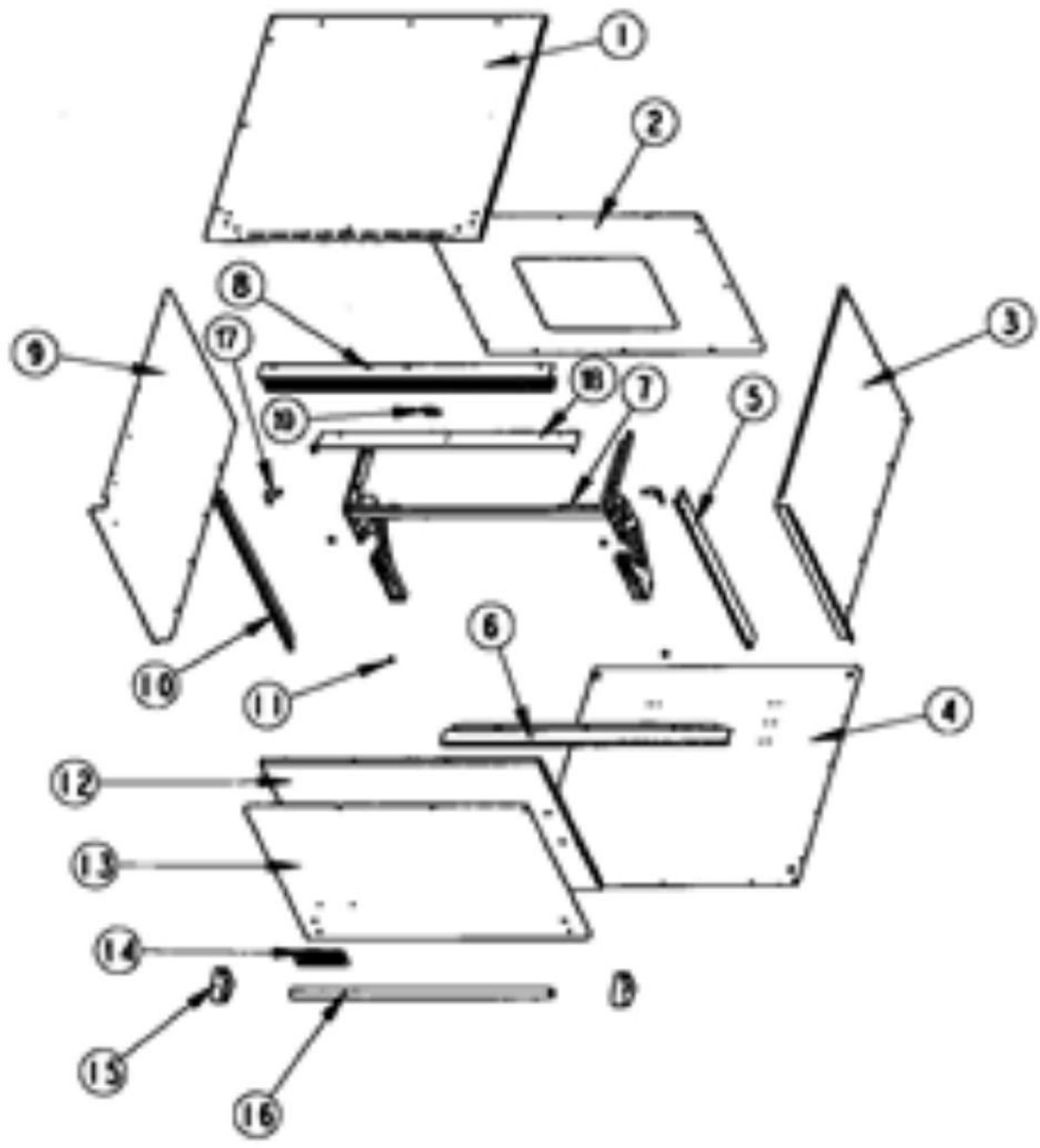
VIKING VMWC101 Owner's Manual

[Shop genuine replacement parts for VIKING VMWC101](#)



[Find Your VIKING Microwave Parts - Select From 37 Models](#)

----- Manual continues below -----



Ref #	Part Number	Qty.	Description
1	B2005636		CABINET TOP-30 (VMWC)
2	B2005635		CABINET BACK 30 (VMWC)
3	B2005626		CABINET SIDE RH (VMWC171)
4	B2005634		MAIN BTM 30 VMWC
5	PE040105		SIDE TRIM- RH (VMWC)
6	PE040107		BTM TRIM (VMWC101)
7	PC020027		UP-SWING HINGE (VMWC101)
8	PE040077		TOP TRIM (VMWC100)
9	B2005627		CABINET SIDE LH (VMWC171)
10	PE040106		SIDE TRIM - LH (VMWC)
11	PD040004		GROMMET BUMPER
12	B2005614		INSIDE DOOR SKIN 30
13	B2005613		OUTER DOOR SKIN 30
	C9005613AL		OUTER DOOR SKIN 30
	C9005613BK		OUTER DOOR SKIN 30
	C9005613BT		OUTSIDE DOOR SKIN - BT
	C9005613BU		OUTER DOOR SKIN 30
	C9005613CB		OUTSIDE DOOR SKIN - CB
	C9005613EP		OUTSIDE DOOR SKIN - EP
	C9005613FG		OUTER DOOR SKIN 30
	C9005613GG		OUTER DOOR SKIN 30
	C9005613LE		OUTSIDE DOOR SKIN - LE
	C9005613LN		OUTER DOOR SKIN 30
	C9005613MJ		OUTSIDE DOOR SKIN - MJ
	C9005613PL		OUTER DOOR SKIN 30
	C9005613SG		OUTER DOOR SKIN 30
	C9005613VB		OUTER DOOR SKIN 30
	C9005613WH		OUTER DOOR SKIN 30
14	PE010016		NAMEPLATE, LOGO, PRO
	PE010079		4.5 LOGO/VIKING PROF, BK/BR
	PE010017		LOGO (VGSO,VEDO,VGDO,VUD) XWH/CHR
	PE010080		4.5 LOGO/VIKING PROF XWH/BR
15	PE030001		BRACKET, DOOR, HANDLE
	PE030001PVD		END CAP DOOR HANDLE XBR
16	PE030086		SUB TO PE030064 - DR HANDLE - VMWC101
	PE030086PVD		SUB TO PE030012PVD -DR HND VMWC101
17	A2002247		TRIM CORNER BRKT (VGSO166)
18	A2003110		VENT-30" (VMWC)
19	A2003119		TOP TRIM BRKT (VMWC)
NI	PD020032		SRW-8(A)X3/8PH.WFR HD 7/16DIAXNICL
NI	PD020055		NO.10 X 1/2 PAN PHIL. TEK. SS
NI	G3205637AL		DOOR ASSY-30W XALX (VMWC)
	G3205637ALBR		DOOR ASSY-30W XALX XBRX (VMWC)
	G3205637BK		DOOR ASSY-30W XBKX (VMWC)
	G3205637BKBR		DOOR ASSY-30W XBKX XBRX (VMWC)
	G3205637BT		COMPLETE DOOR ASSY - BT
	G3205637BTBR		COMPLETE DOOR ASSY - BTBR
	G3205637BU		DOOR ASSY-30W XBUX (VMWC)
	G3205637BUBR		DOOR ASSY-30W XBUX XBRX (VMWC)
	G3205637CB		COMPLETE DOOR ASSY - CB
	G3205637CBBR		COMPLETE DOOR ASSY - CBBR
	G3205637EP		COMPLETE DOOR ASSY - EP
	G3205637EPBR		COMPLETE DOOR ASSY - EPBR
	G3205637FG		DOOR ASSY-30W XFGX (VMWC)
	G3205637FGBR		DOOR ASSY- 30 W XFGX XBRX
	G3205637GG		DOOR ASSY-30W XGGX (VMWC)
	G3205637GGBR		DOOR ASSY-30W XGGX XBRX (VMWC)
	G3205637LE		COMPLETE DOOR ASSY - LE
	G3205637LEBR		COMPLETE DOOR ASSY - LEBR
	G3205637LN		DOOR ASSY-30W XLNX (VMWC)

Ref #	Part Number	Qty.	Description
	G3205637LN		DOOR ASSY-30W XLNX (VMWC)
	G3205637LNBR		DOOR ASSY-30W XLNX XBRX (VMWC)
	G3205637MJ		COMPLETE DOOR ASSY - MJ
	G3205637MJBR		COMPLETE DOOR ASSY - MJBR
	G3205637PL		DOOR ASSY-30W XPLX (VMWC)
	G3205637PLBR		DOOR ASSY_30W XPLX XBRX (VMWC)
	G3205637SG		COMPLETE DOOR ASSY - SG
	G3205637SGBR		COMPLETE DOOR ASSY - SGBR
	G3205637SS		DOOR ASSY-30W XSSX (VMWC)
	G3205637SSBR		DOOR ASSY_30W XSSX XBRX (VMWC)
	G3205637VB		DOOR ASSY_30W XVBX (VMWC)
	G3205637VBBR		DOOR ASSY-30W XVBX XBRX (VMWC)
	G3205637WH		DOOR ASSY-30W XWHX (VMWC)
	G3205637WHBR		DOOR ASSY- 30W XWHX XBRX (VMWC)
NI	B2003126		TOP DOOR STOP - 30 (VMWC)
NI	010955-000		GREY 380 N PISTON (VMWC/DMWC)