

This Owner's Manual is provided and hosted by [Appliance Factory Parts](#).



LG LA096HNP Owner's Manual

[Shop genuine replacement parts for LG LA096HNP](#)



[Find Your LG Air Conditioner Parts - Select From 2328 Models](#)

----- Manual continues below -----

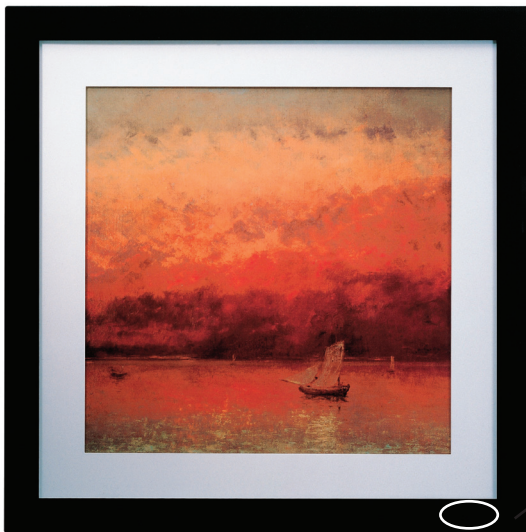
DEFINING COMMON ERROR CODES

Art Cool™ Gallery Single Zone Systems

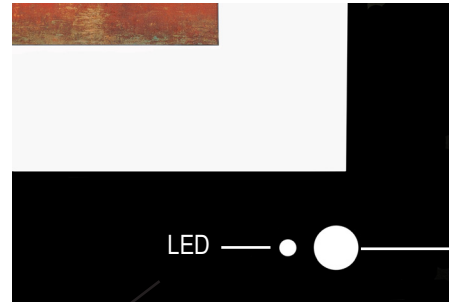
LA096HNP System (LAN096HNP Indoor Units / LAU096HNP Outdoor Units)

LA126HNP System (LAN126HNP Indoor Units / LAU126HNP Outdoor Units)

LAN096HNP and LAN126HNP Indoor Units



Location of light-emitting diode (LED) display



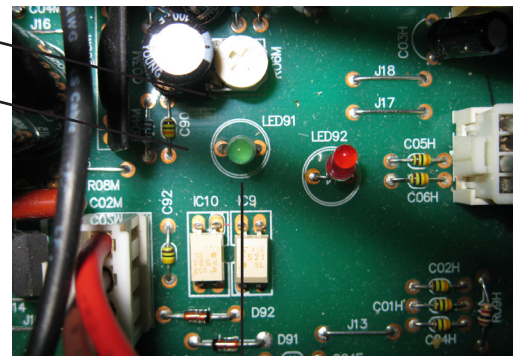
Infrared receiver
(does not indicate errors)

| Error Code | Description | No. of Times Indoor Unit LED Blinks |
|------------|---|-------------------------------------|
| 1 | Indoor unit thermistor is disconnected or is shorted out. | 1X |
| 2 | Outdoor unit thermistor is disconnected or is shorted out. | 2X |
| 5 | Communication failure from indoor unit to outdoor unit. | 5X |
| 9 | Indoor unit electrically erasable programmable read-only memory (EEPROM) error. | 9X |
| 10 | Indoor unit fan has locked up (fan motor operation failure). | 10X |

LAU096HNP and LAU126HNP Outdoor Units



Location of PCB LED: To access, remove outdoor unit cover, and then remove lid to PCB box.



LED1 (Green)

Random blinking of LED1 (Green) indicates normal communication between the outdoor unit PCB and the indoor unit PCB.

DEFINING COMMON ERROR CODES

Art Cool™ Gallery Single Zone Systems

LA096HNP System (LAN096HNP Indoor Units / LAU096HNP Outdoor Units)

LA126HNP System (LAN126HNP Indoor Units / LAU126HNP Outdoor Units)

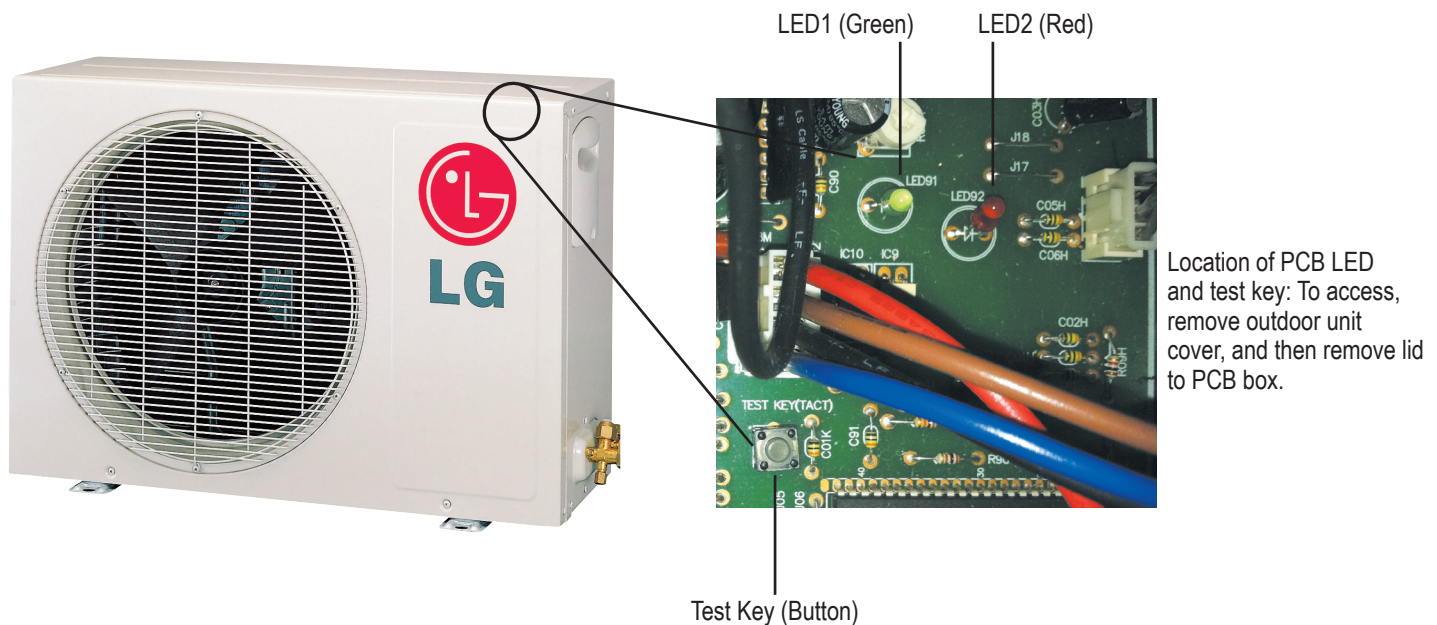
Test Mode Operation

LG non-inverter systems include a test mode that can be initiated by pressing the test key (button) on the outdoor unit PCB. Test mode can be used to verify individual component operation at any time. See table below for list of outdoor unit components tested. If system is functioning properly, the components will operate normally. If there are system errors, the components will not function.

| Sequence of Test Steps (Consecutive Button Pushes) | Outdoor Unit Component Tested | Indoor Unit Operation |
|--|--|------------------------------------|
| First | Initializes test button mode. Units do not operate. | |
| Second | Compressor and condenser fan. | Runs in Super High Fan Speed mode. |
| Third | Reversing valve (verify using line voltage at connector terminal). Red LED on PCB blinks. | Runs in High Fan Speed mode. |
| Fourth | Condenser fan, reversing valve, and crankcase heater. Green LED on PCB blinks. | Run in Medium Fan Speed mode. |
| Fifth | Fan (9,000 and 12,000 Btu/h capacity units). | Runs in Low Fan Speed mode. |
| Sixth | Fan (9,000 and 12,000 Btu/h capacity units). Red and green LEDs on PCB blink. | Runs in Super High Fan Speed mode. |
| Seventh | Resets for normal operation. Units will start after three (3) minutes. | |

⚠ Note:

- Resetting the power will terminate test button mode.
- Test button mode will self-terminate after 17 minutes of inactivity. System will then resume normal operation.



Refer to Service Manuals posted on www.lg-dfs.com to troubleshoot individual error codes.