

This Owner's Manual is provided and hosted by [Appliance Factory Parts](#).



MAJESTIC VWF18MOST Owner's Manual

[Shop genuine replacement parts for MAJESTIC
VWF18MOST](#)



[Find Your MAJESTIC Fireplace Parts - Select From 585 Models](#)

----- Manual continues below -----

VWF18MOST MASSIVE OAK SEE THROUGH LOGS

Installation Instructions

The information on this sheet supersedes the information listed in the VWF series Owner's Manual. Please keep this sheet with your Owner's Manual and Warranty Packet for future reference.

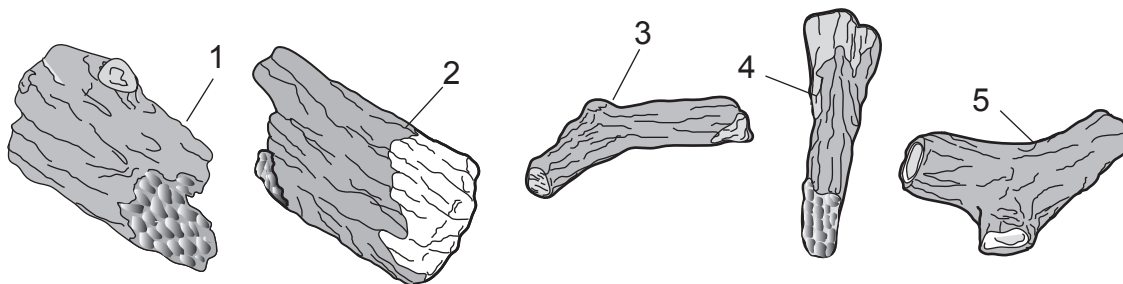
This log set for use only with the VWF series engine/grate. The log size must be the same as the engine/grate size.

WARNING

The positioning of the logs is critical to the safe and cleanest operation of this gas log set. Sooting and other problems may result if the logs are not properly positioned per these instructions.

Failure to position the parts in accordance with diagrams below or to not use only parts specifically approved for this log set may result in property damage or personal injury.

Item	Description	Qty	VWF18MOST
1	Bottom Left Front Log	2	27D7501
2	Bottom Right Front Log	2	57D7502
3	Left/Right Curved Log	2	27D8830
4	Top Left/Right Split/Char Log	2	27D8831
5	Curved Center Top Log	1	27D8829



MASSIVE OAK SEE THROUGH LOGS INSTALLATION SEQUENCE

1. Place bottom left front log (#1) and bottom right front log (#2) on front of grate. *See Figure 1.*
2. Place bottom left front log (#1) behind bottom right front log (#2) on back of grate. *See Figure 2.*
3. Place bottom right front log (#2) behind bottom left front log (#1) on back of grate. *See Figure 2.*

Continued

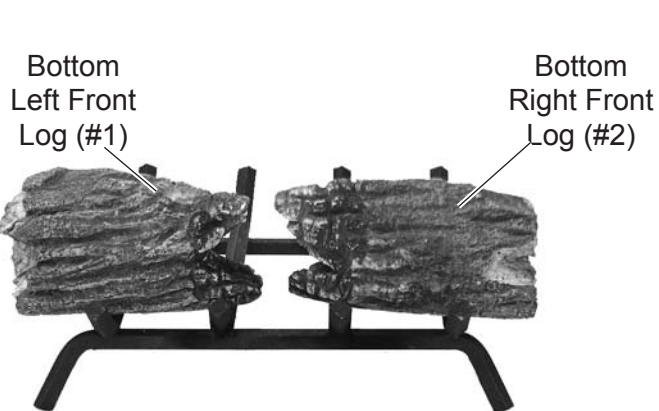


Figure 1 - Placing Left Front Log (#1) and Right Front Log (#2)

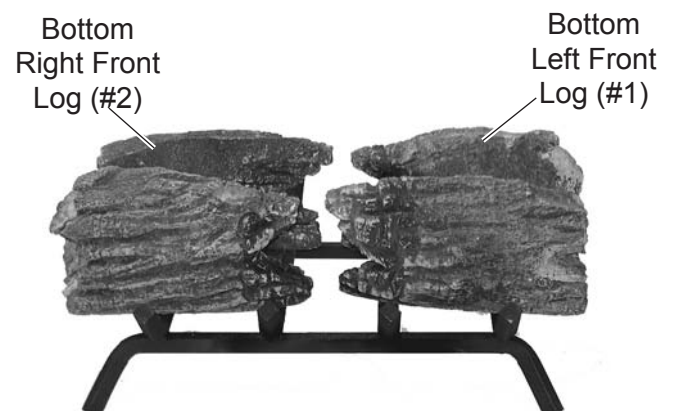


Figure 2 - Placing Left Front Log (#1) and Right Front Log (#2) behind Bottom Front Logs

MASSIVE OAK SEE THROUGH LOGS INSTALLATION SEQUENCE (continued)

4. Place left/right curved log (#3) on top of front and back bottom left logs. *See Figure 3.*
5. Place left/right curved log (#3) on top of front and back bottom right logs. *See Figure 4.*
6. Place left/right split charred log (#4) on top of front and back bottom left logs. *See Figure 5.*
7. Place left/right split charred log (#4) on top of front and back bottom right logs. *See Figure 6.*
8. Place top log (#5) on top of left/right charred logs. *See Figure 7.*

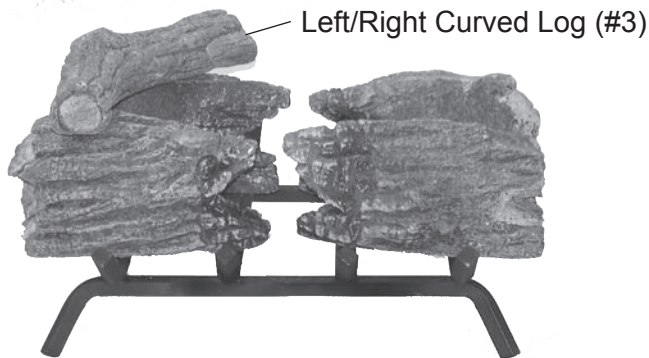


Figure 3 - Placing Left/Right Curved Log (#3) on Bottom Left Logs

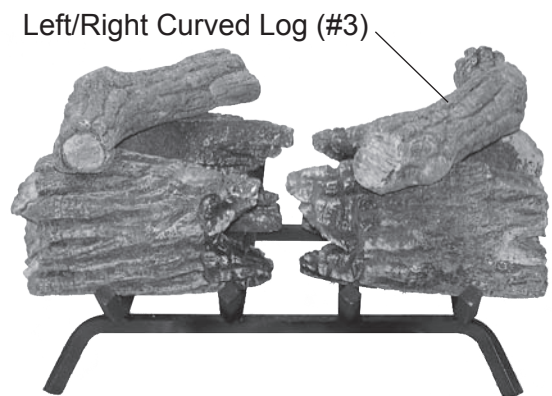


Figure 4 - Placing Left/Right Curved Log (#3) on Bottom Right Logs

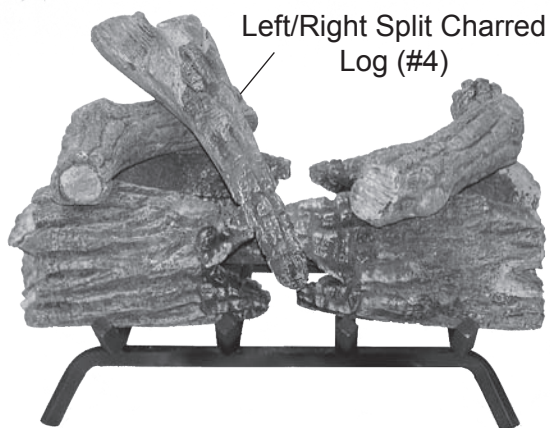


Figure 5 - Placing Left/Right Split Charred Log (#4) on Bottom Left Logs

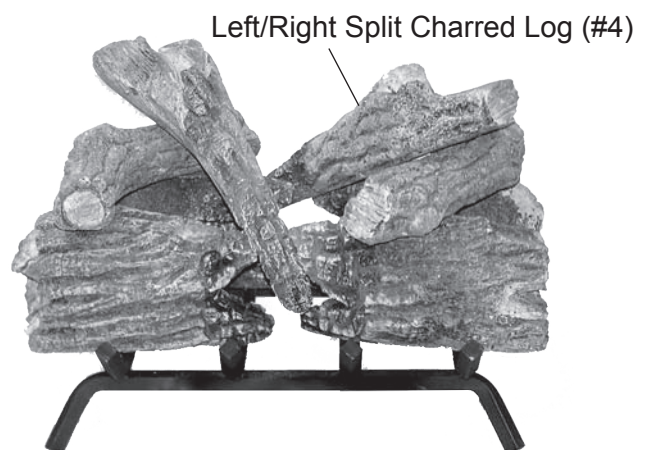


Figure 6 - Placing Left/Right Split Charred Log (#4) on Bottom Right Logs

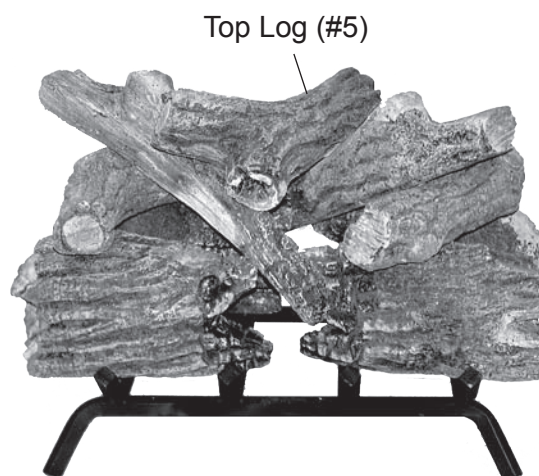


Figure 7 - Placing Top Log (#5) on Top of Left/Right Charred Logs