

Spare Parts Catalogue

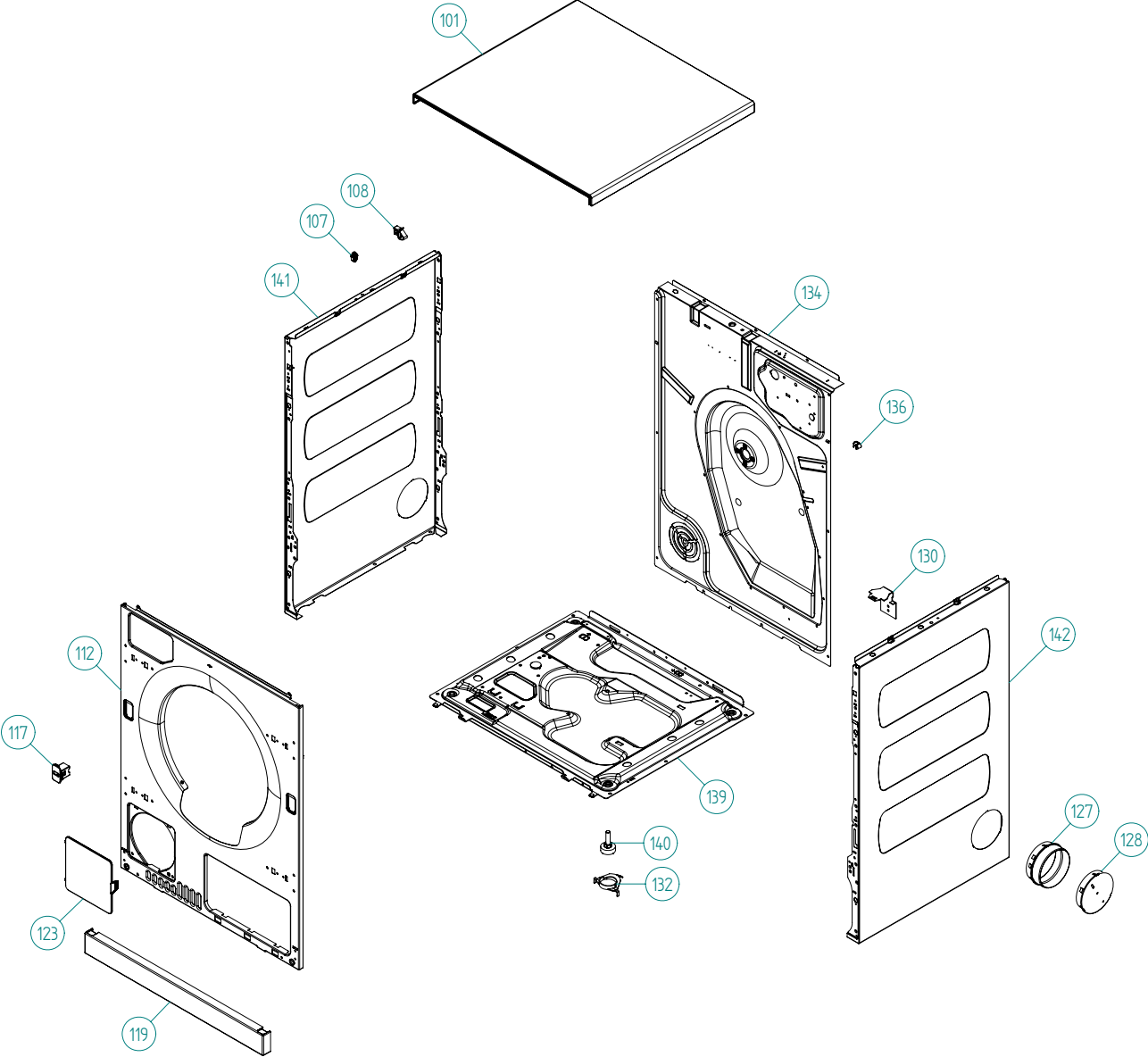
ASKO Tumble Dryers \ ASKO 700 Series
Type: TD60.2
Model: T783 US Stainless

Prod. No: 10778301

March 9th 2012

ASKO Appliances Inc.

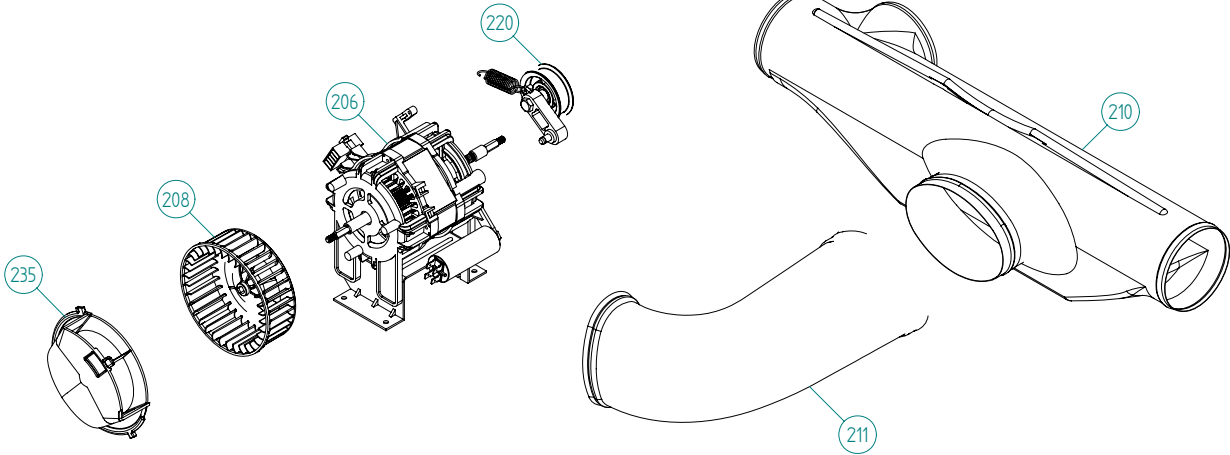
4001 E Plano Parkway #1004001 E Plano Parkway #100
Plano, Texas 75074



Outer Casing

ASKO, T783 US - Stainless (TD60.2)

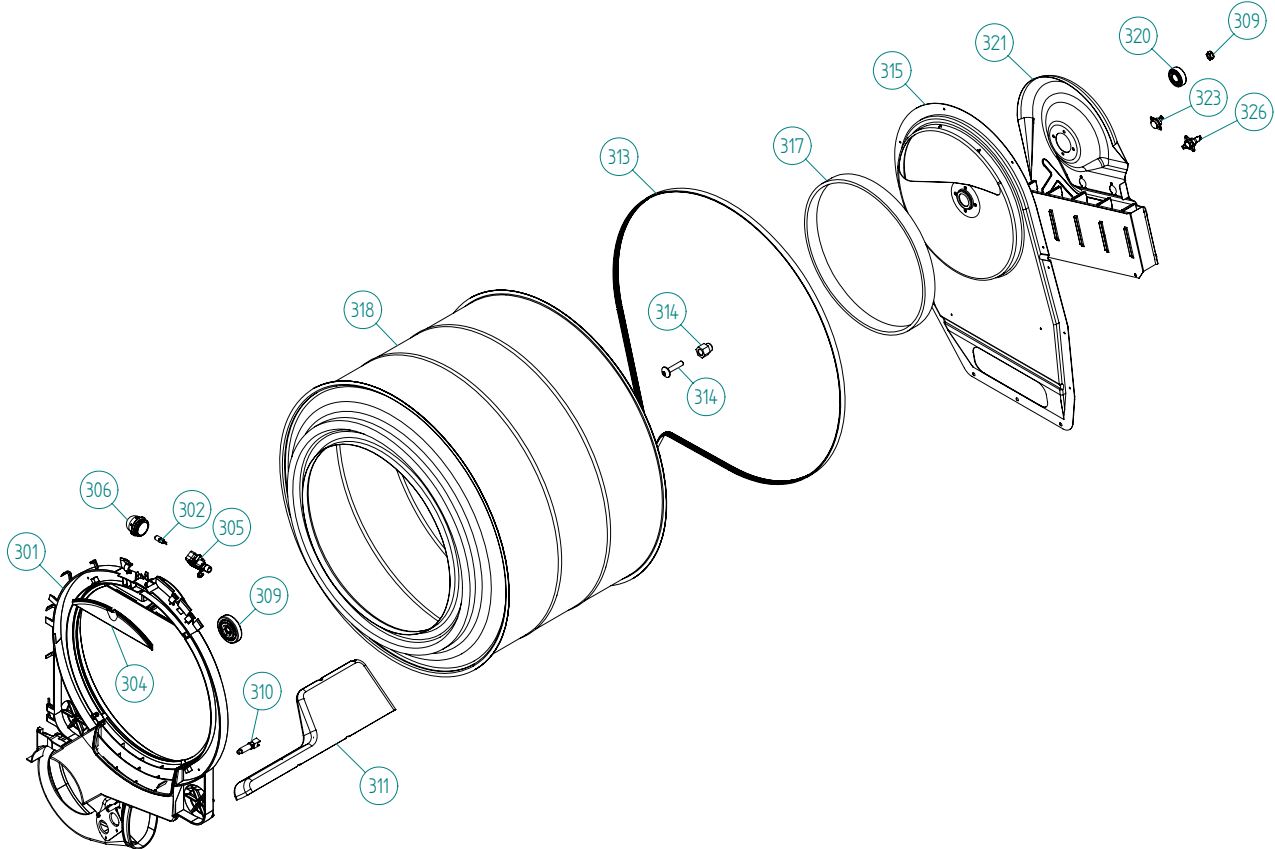
| Pos | Spare part No. | Description | Qty | Comment |
|-------|----------------|---------------------------------|---------|---------|
| 101 | 8061817-91 | TOP COVER FPR | 1 Pc's | |
| 101-a | 8902362 | Screw 20 Torx Self Tapping | 3 Pc's | |
| 101-b | 8901413 | Lock Washer laundry tops | 2 Pc's | |
| 106 | 8801175-91 | SIDE PLATE COMPL.LEFT TD20 EXH | 1 Pc's | |
| 107 | 8061763 | Clip Front Plate 600700s | 2 Pc's | |
| 108 | 8061916 | CABLE HOLDER WMD20 | 2 Pc's | |
| 112 | 8076031-91 | FRONT | 1 Pc's | |
| 112-a | 8902362 | Screw 20 Torx Self Tapping | 2 Pc's | |
| 112-b | 8900327 | Screw 20 Torx Self Tapping | 4 Pc's | |
| 117 | 8093526-81 | LOCK PUSH/PUSH | 1 Pc's | |
| 119 | 8076080-81 | PLINTH | 1 Pc's | |
| 123 | 8076075-81 | COVER FOR FAN HOUSING | 1 Pc's | |
| 127 | 8052641 | Collar Vent Exhaust TD | 1 Pc's | |
| 128 | 8052640-81-UL | Exhaust lid titanium | 2 Pc's | |
| 130 | 8053980 | Stacking Bracket All TDs | 2 Pc's | |
| 132 | 8064114 | Pair, Holders, TD Feet/Stacking | 1 Pc's | |
| 134 | 8079947 | REAR PANEL OUTER PUNCHED TD25 | 1 Pc's | |
| 134-a | 8902362 | Screw 20 Torx Self Tapping | 10 Pc's | |
| 136 | 8061915 | Cable Holder T700 | 1 Pc's | |
| 139 | 8061618 | BASE PAN WMD20 | 1 Pc's | |
| 140 | 8059334 | Leveling Leg Comp WMD 20 | 4 Pc's | |
| 141 | 8801175-91 | SIDE PLATE COMPL.LEFT TD20 EXH | 1 Pc's | |
| 141 | 8801176-91 | SIDE PLATE COMPL.RIGHT TD20EXH | 1 Pc's | |
| 142 | 8801176-91 | SIDE PLATE COMPL.RIGHT TD20EXH | 1 Pc's | |



Lower session

ASKO, T783 US - Stainless (TD60.2)

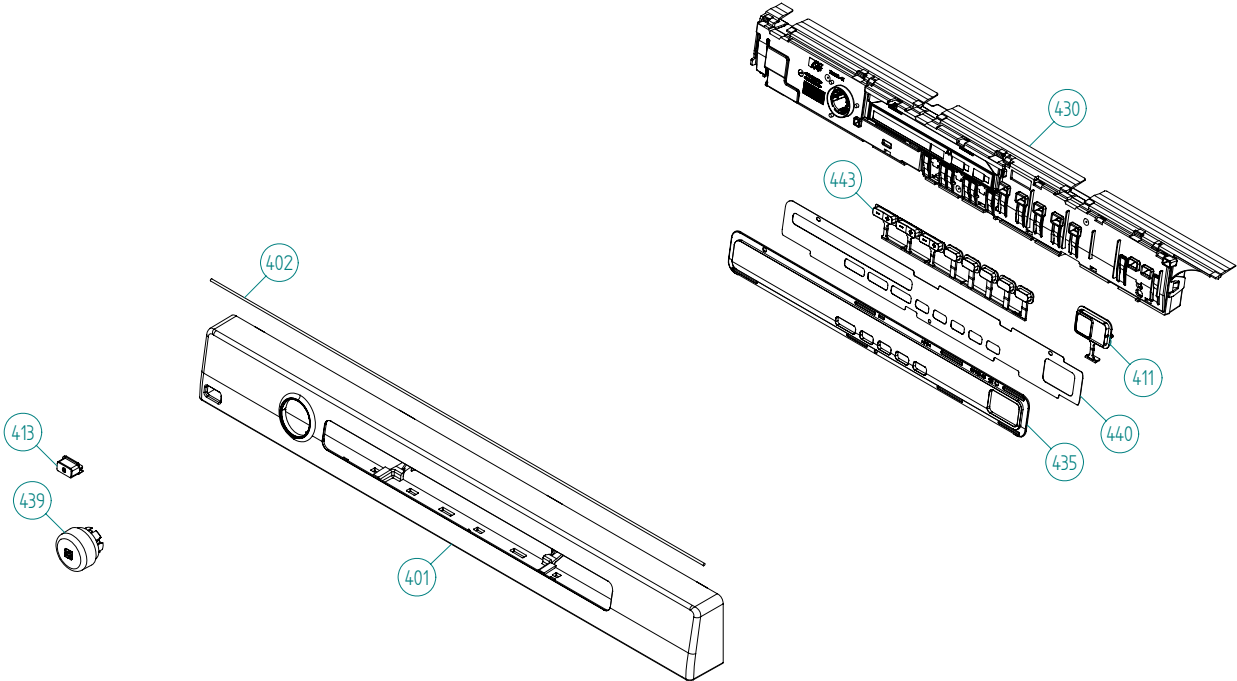
| Pos | Spare part No. | Description | Qty | Comment |
|-------|----------------|--------------------------------|--------|---------------|
| 206 | 8061895 | MOTOR COMPL. 60HZ TD20 | 1 Pc's | |
| 206-a | 8901969 | SCREW MRT-TT 5x12 FZB T20 | 4 Pc's | |
| 206-b | 8080119 | Capacitor 8UF 450V-Dryer Motor | 1 Pc's | |
| 206-c | 8054640 | CAPACITOR 4UF 400V | 1 Pc's | For ACC motor |
| 208 | 8065797 | Fan Impeller 120MM | 1 Pc's | |
| 210 | 8052638 | T-Tube w/o Recirc holes | 1 Pc's | |
| 211 | 8052639 | Exhaust Canal Bend | 1 Pc's | |
| 220 | 8801490 | Tension Wheel w/Belt & Spring | 1 Pc's | |
| 235 | 8077484-49 | COVER FOR FAN HOUSING | 1 Pc's | |



Cylinder and related parts

ASKO, T783 US - Stainless (TD60.2)

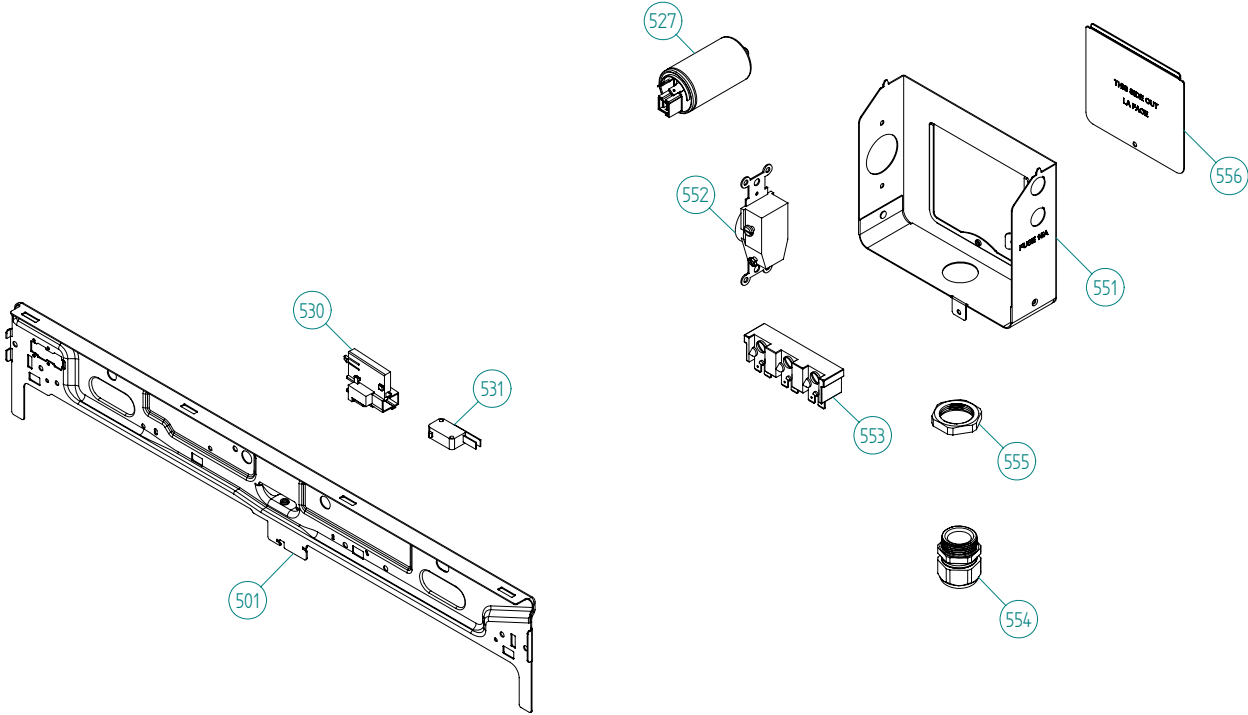
| Pos | Spare part No. | Description | Qty | Comment |
|-------|----------------|--------------------------------|--------|---------|
| 301 | 8801322 | Front Frame Compl TD60 | 1 Pc's | |
| 301-a | 8902066 | SCREW A2-PTK 35X14 WN1453 PF | 4 Pc's | |
| 302 | 8073830 | Halogen Lamp | 1 Pc's | |
| 304 | 8061932-49 | Lamp housing lid grey TD21 | 1 Pc's | |
| 305 | 8077518 | LAMP SOCKET | 1 Pc's | |
| 306 | 8061887 | Lamp Chimney | 1 Pc's | |
| 309 | 8052622 | Drum Roller Frt TD | 2 Pc's | |
| 309-a | 8901337 | Washer | 2 Pc's | |
| 309-b | 8901193 | Locking Nut | 2 Pc's | |
| 309-c | 8901028 | Screw | 2 Pc's | |
| 310 | 8083344 | THERMISTOR TD | 1 Pc's | |
| 311 | 8052589-49 | PADDLE TD | 2 Pc's | |
| 313 | 8801490 | Tension Arm w/Belt & Spring | 1 Pc's | |
| 314 | 8052632 | Bushing Rear Drum 03/05 TD | 1 Pc's | |
| 314-a | 8901130 | SCREW A4-MVBF M8X40 7,9-8,0 HG | 1 Pc's | |
| 315 | 8076335 | REAR PANEL INNER TD25 | 1 Pc's | |
| 317 | 8064440 | Felt sealing rear | 1 Pc's | |
| 318 | 8079449 | CYLINDER COMPL TD | 1 Pc's | |
| 318 | 8079493 | CYLINDER COMPL. TD | 1 Pc's | |
| 320 | 8004439 | Bearing Dryer Rear Panel All | 1 Pc's | |
| 321 | 8079288 | HEATING ELEMENT 3000W | 1 Pc's | |
| 321-a | 8900369 | Screw T25 | 2 Pc's | |
| 321-b | 8901415 | LOCK WASHER AZ 5.3 GALV | 2 Pc's | |
| 323 | 8079291 | THERMISTOR | 1 Pc's | |
| 323-a | 8900327 | Screw 20 Torx Self Tapping | 1 Pc's | |
| 326 | 8079737 | THERMOSTAT 150C UL | 1 Pc's | |



Control Panel

ASKO, T783 US - Stainless (TD60.2)

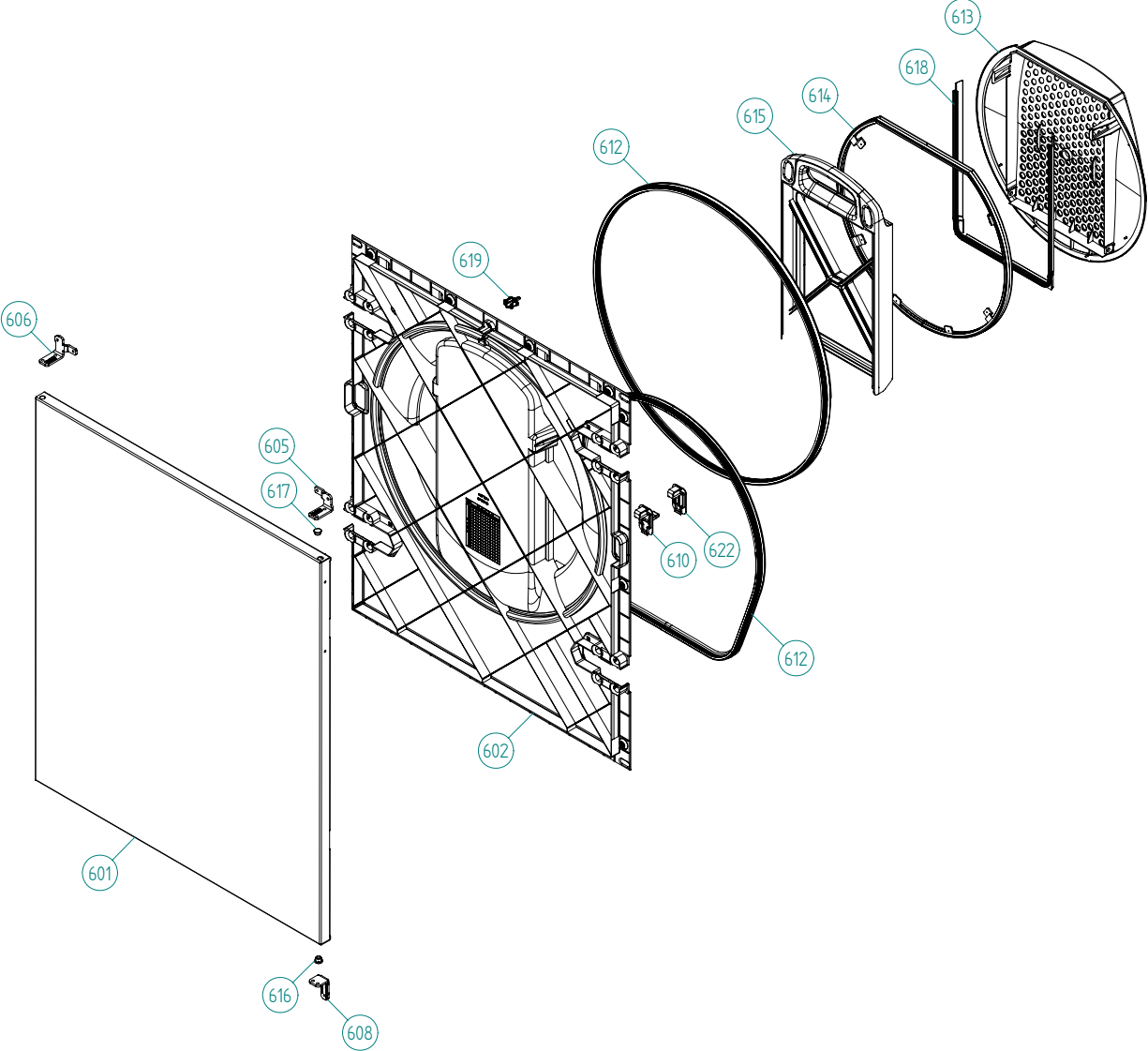
| Pos | Spare part No. | Description | Qty | Comment |
|------------|-----------------------|--------------------------------|------------|----------------|
| 401 | 8083062-81-UL | PANEL ASKO T783 | 1 Pc's | |
| 402 | 8079749 | Rubber Seal-Cntrl Panel to Brd | 1 Pc's | |
| 411 | 8081749-81 | PUSHBUT. START/STOP PRINTED TD | 1 Pc's | |
| 413 | 8081710-81 | PUSHBU. MAINSWITCH WMD60.2 UL4 | 1 Pc's | |
| 430 | 8080604 | CONTROL UNIT TD60.2 | 1 Pc's | |
| 435 | 8081805 | LENS 5-OPTIONS TD60.2 | 1 Pc's | |
| 440 | 8082160-81 | DECOR PLATE 5-OPTIONS TD60.2 | 1 Pc's | |
| 441 | 8082163-33 | ASKO A | 1 Pc's | |
| 442 | 8082421-81-UL | KNOB ASKO WMD60.2 COMPL. UL4 | 1 Pc's | |
| 443 | 8081527-81 | KEY SET 8-BUTTONS | 1 Pc's | |



Upper session

ASKO, T783 US - Stainless (TD60.2)

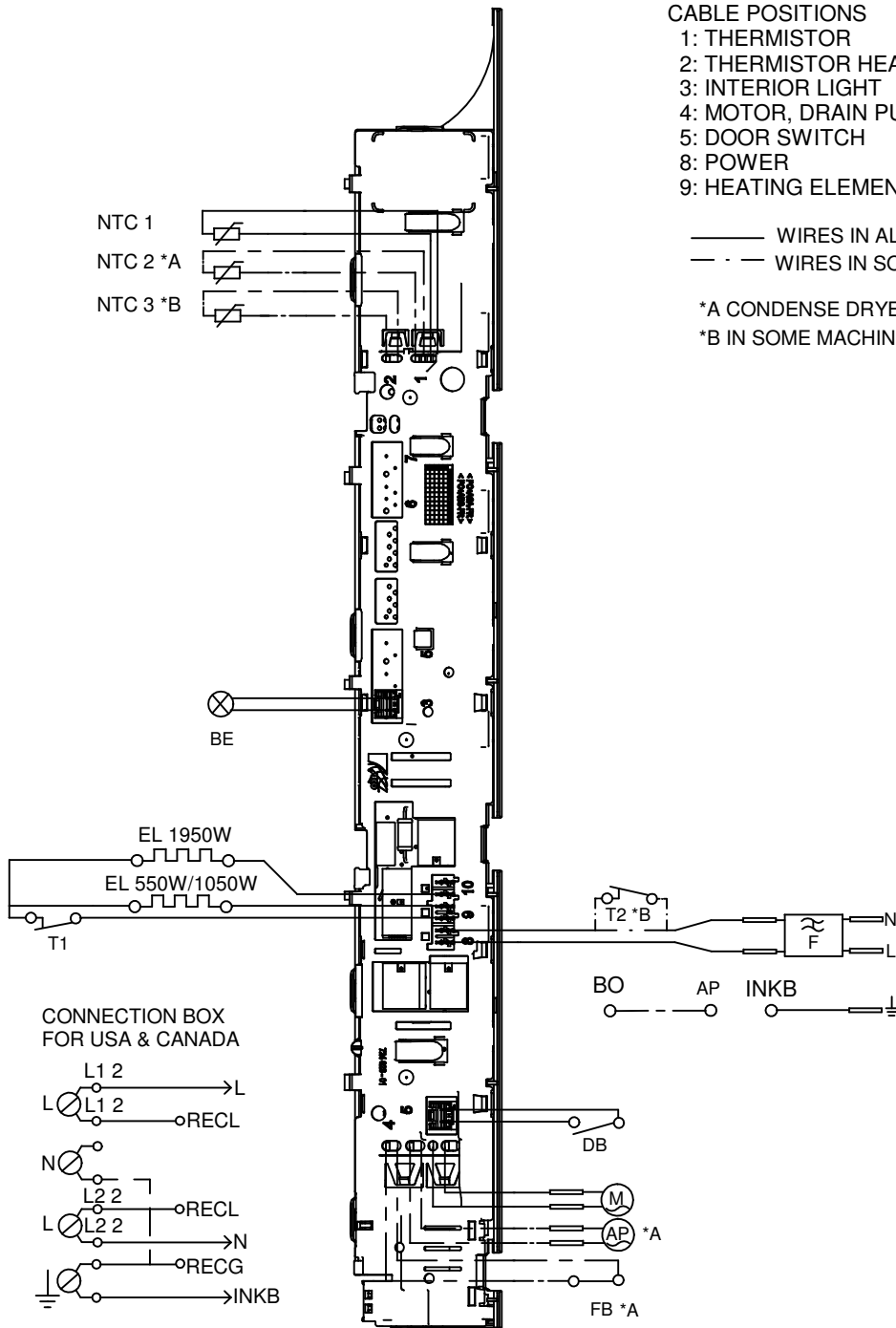
| Pos | Spare part No. | Description | Qty | Comment |
|-------|----------------|----------------------------|--------|---------|
| 501 | 8076029 | FRONTBEAM | 1 Pc's | |
| 501-a | 8902362 | Screw 20 Torx Self Tapping | 2 Pc's | |
| 501-b | 8901413 | Lock Washer laundry tops | 2 Pc's | |
| 527 | 8076202 | EMC-FILTER WITH INDUCTOR | 1 Pc's | |
| 527-a | 8901155 | Nut | 1 Pc's | |
| 527-b | 8901419 | Lock Washer | 1 Pc's | |
| 529 | 8079837 | CABLE SET T TD UL4 | 1 Pc's | |
| 529 | 8079842 | CABLE SET MO TD UL4 | 1 Pc's | |
| 529 | 8079845 | CABLE SET Thermistor TD60 | 1 Pc's | |
| 529 | 8083020 | CABLE SET BE TD UL4 | 1 Pc's | |
| 529 | 8083027 | CABLE SET EL TD UL4 | 1 Pc's | |
| 529 | 8082567 | CABLE SET P TD UL4 | 1 Pc's | |
| 529 | 8083019 | CABLE SET LB TD UL4 | 1 Pc's | |
| 530 | 8077519 | BRACKET FOR DOOR SWITCH | 1 Pc's | |
| 531 | 8073836 | MICROSWITCH DOOR | 1 Pc's | |
| 551 | 8076324 | Connection box T711 | 1 Pc's | |
| 552 | 8061455 | Receptacle 05 WMD Connect | 1 Pc's | |
| 553 | 8061891 | Terminal Block DryerTD 20 | 1 Pc's | |
| 554 | 8060462 | Grommet | 1 Pc's | |
| 554 | 8078291 | GROMMET 94793 | 1 Pc's | |
| 555 | 8060463 | Lock Nut | 1 Pc's | |
| 556 | 8063756 | Cover Terminal block T700s | 1 Pc's | |
| 556-a | 8901097 | Screw Terminal | 1 Pc's | |



Outer Door

ASKO, T783 US - Stainless (TD60.2)

| Pos | Spare part No. | Description | Qty | Comment |
|-------|----------------|------------------------------|--------|---------|
| 601 | 8076033-91 | OUTER DOOR FPR | 1 Pc's | |
| 601-a | 8900352 | Screw Access Panel 05/06 | 6 Pc's | |
| 602 | 8083557-49 | DOOR INNER PART | 1 Pc's | |
| 602-a | 8902068 | Screw | 5 Pc's | |
| 605 | 8077599-81 | HINGE UPPER R | 1 Pc's | |
| 605-a | 8900327 | Screw 20 Torx Self Tapping | 3 Pc's | |
| 605-b | 8901097 | Screw Terminal | 1 Pc's | |
| 605-c | 8061804 | HINGE PIN | 1 Pc's | |
| 606 | 8079489-81 | HINGE UPPER L | 1 Pc's | |
| 606-a | 8900327 | Screw 20 Torx Self Tapping | 3 Pc's | |
| 606-b | 8901097 | Screw Terminal | 1 Pc's | |
| 606-c | 8061804 | HINGE PIN | 1 Pc's | |
| 608 | 8076032-81 | HINGE DOOR LOWER | 1 Pc's | |
| 608-a | 8901097 | Screw Terminal | 2 Pc's | |
| 608-b | 8061804 | HINGE PIN | 1 Pc's | |
| 610 | 8077485-49 | LOCK CATCH | 1 Pc's | |
| 612 | 8077494 | DOOR SEALING OUTER | 1 Pc's | |
| 612 | 8082978 | DOOR SEALING TD60 | 1 Pc's | |
| 613 | 8079750-49 | Filter Holder Complete | 1 Pc's | |
| 614 | 8065274 | Filter Bracket Seal TD | 1 Pc's | |
| 615 | 8077490-49 | LINT FILTER COMPL. | 1 Pc's | |
| 616 | 8061865-81 | Hinge Bearing 700 Series | 2 Pc's | |
| 617 | 8061953-81 | door plug titanium | 1 Pc's | |
| 618 | 8079247 | SEALING FILTER BRACKET INNER | 1 Pc's | |
| 619 | 8077488-49 | DOOR PIN | 1 Pc's | |
| 622 | 8076079-49 | COVER FOR LOCK/LOCK HOOK | 1 Pc's | |
| 622 | 8076079-81 | COVER FOR LOCK/LOCK HOOK | 1 Pc's | |



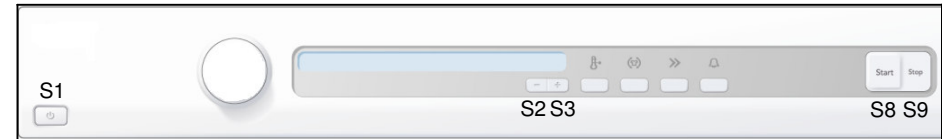
- CABLE POSITIONS**
- 1: THERMISTOR
 - 2: THERMISTOR HEATER
 - 3: INTERIOR LIGHT
 - 4: MOTOR, DRAIN PUMP, FLOAT SWITCH
 - 5: DOOR SWITCH
 - 8: POWER
 - 9: HEATING ELEMENT

—— WIRES IN ALL MACHINES
 - - - WIRES IN SOME MACHINES

*A CONDENSE DRYER
 *B IN SOME MACHINES

RESISTANCES AT ROOM TEMPERATURE (CA. 20°C/68°F)
 VALUES WITH +/-10% ARE REGARDED AS NORMAL
 COMPONENT

- F: RADIO INTERFERENCE SUPPRESSION FILTER 680K Ohm
- NTC 1: THERMISTOR 1 4 - 6 K Ohm
- NTC 2: THERMISTOR 2: 4 - 6 K Ohm
- NTC 3: THERMISTOR 3: 12 - 8 K Ohm
- AP: DRAIN PUMP: 111 Ohm
- EL: HEATING ELEMENT 550W 91.4 Ohm
- EL: HEATING ELEMENT 1050W 45.3 Ohm
- EL: HEATING ELEMENT 1950W 20.5 Ohm
- MO: MOTOR
- T1: THERMOSTAT, OVERHEATING (HEATER)
- T2: THERMOSTAT, FAN HOUSING
- FB: FLOAT SWITCH
- DB: DOOR SWITCH
- BE: INTERIOR LIGHT



SERVICE MENU

- TURN OFF POWER (S1)
- WAIT FOR AT LEAST 5 SEC
- HOLD S2 OR S3
- TURN ON POWER (S1)
- PRESS S2 OR S3 3 TIMES TO ENTER SERVICE MENU

- PRESS STOP (S9) TO CHANGE MENU STEP
- ROTATE DIAL TO CHANGE IN STEP
- PRESSING START (S8) STORES AND EXITS SERVICE MENU

- STEP 1: PRODUCT DATA
- STEP 2: FAILURE DATA
- STEP 3: COMPONENT TEST

TOTAL RESET

- TURN OFF POWER (S1)
- WAIT FOR AT LEAST 5 SEC
- HOLD STOP (S9)
- TURN ON POWER (S1)

CIRCUIT DIAGRAM TD60.2

80 807 13 - 01

This document must not be copied without our written permission, and the contents thereof must not be imparted to a third party nor be used for any unauthorized purpose. Contravention will be prosecuted.
 Asko Cylinda AB