

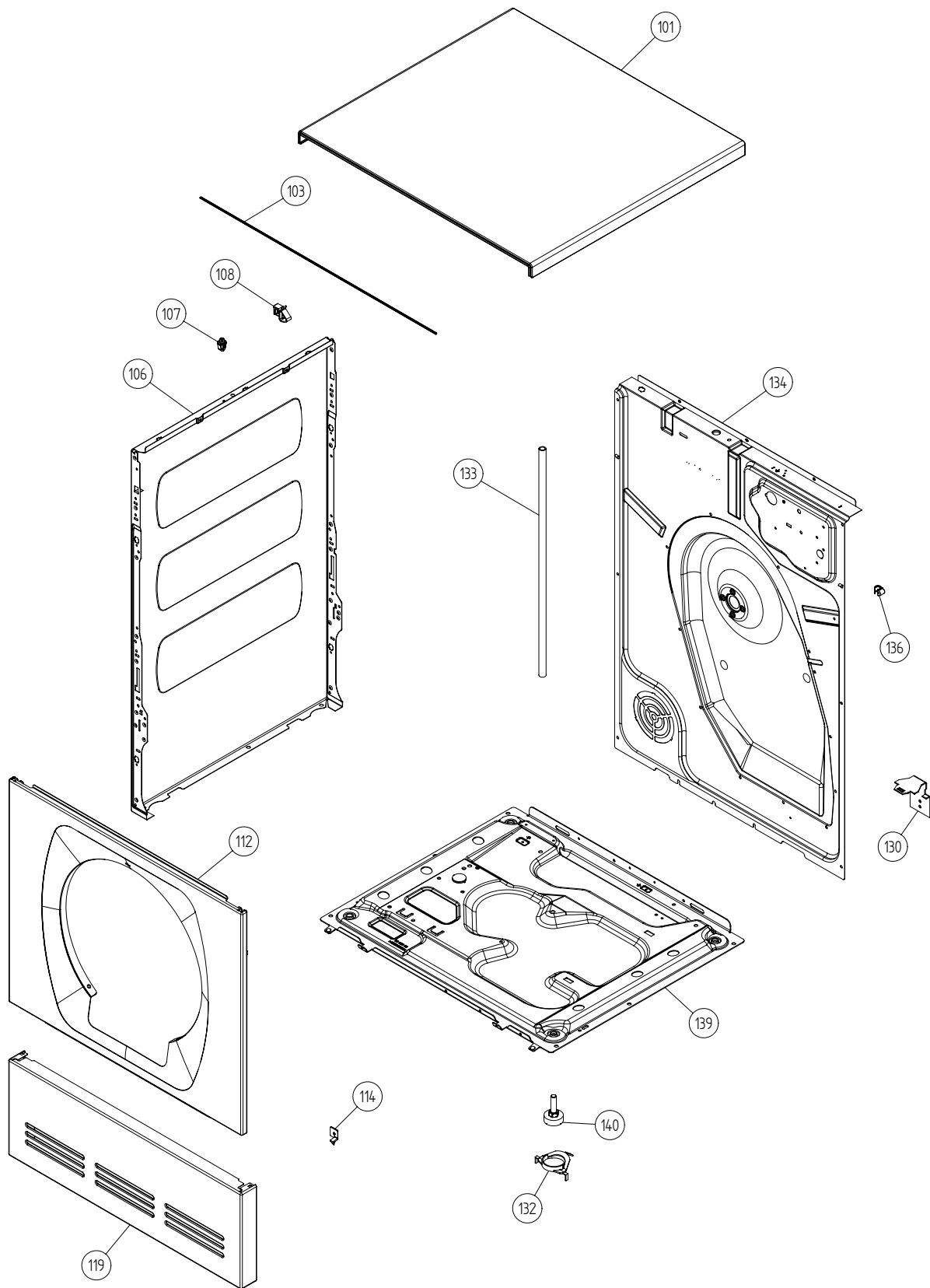
Spare Parts Catalogue

Dryers \ 700 Series
Type: TD25.3
Model: T712C US White

Prod. No: 10771210
January 9th 2007

AM Appliances Group

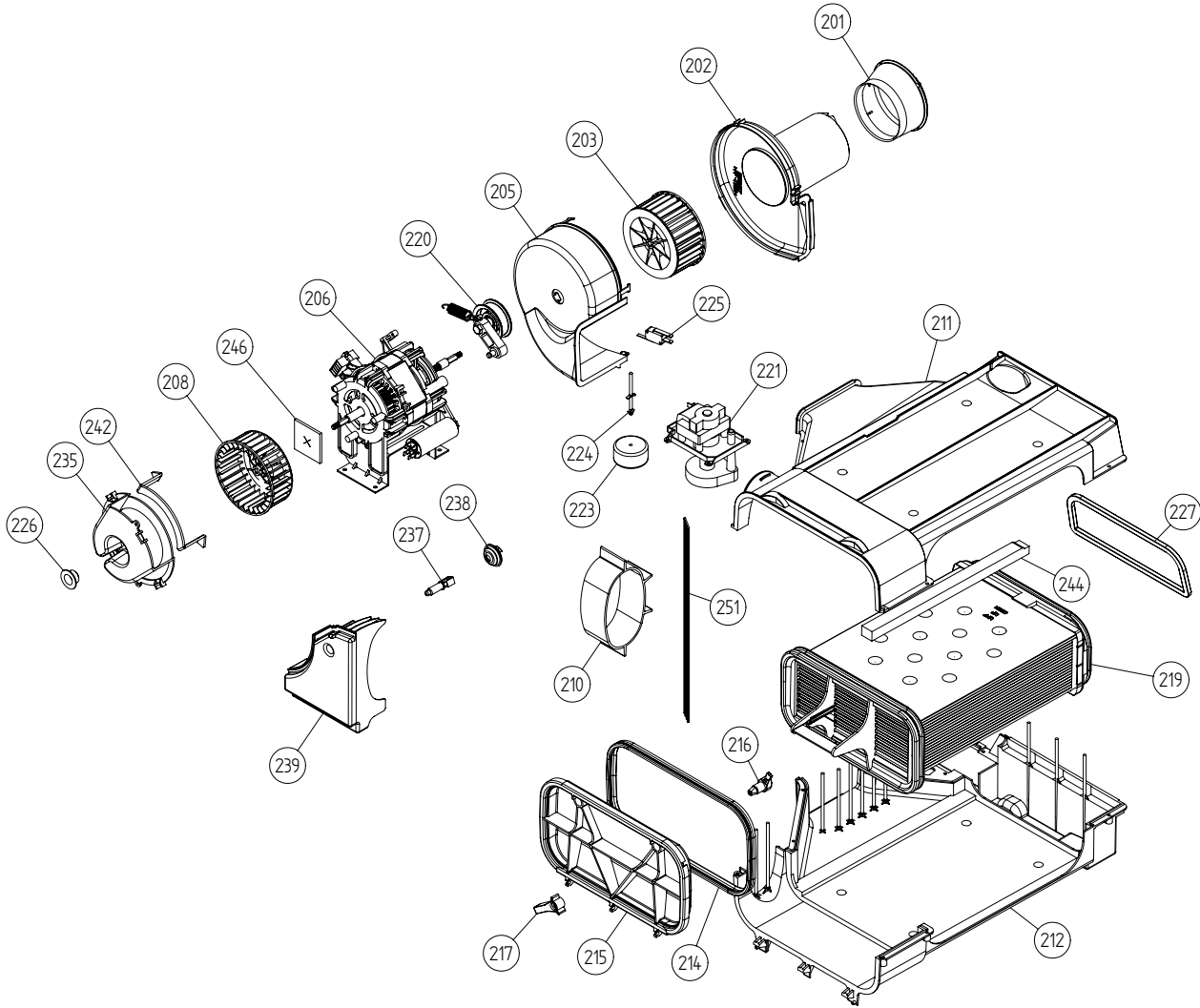
P.O. Box 851805 • Richardson • TX 75085-1805
789 N. Grove Road • Suite 103 • Richardson • TX 75081



Outer Casing

ASKO, T712C US - White (TD25.3)

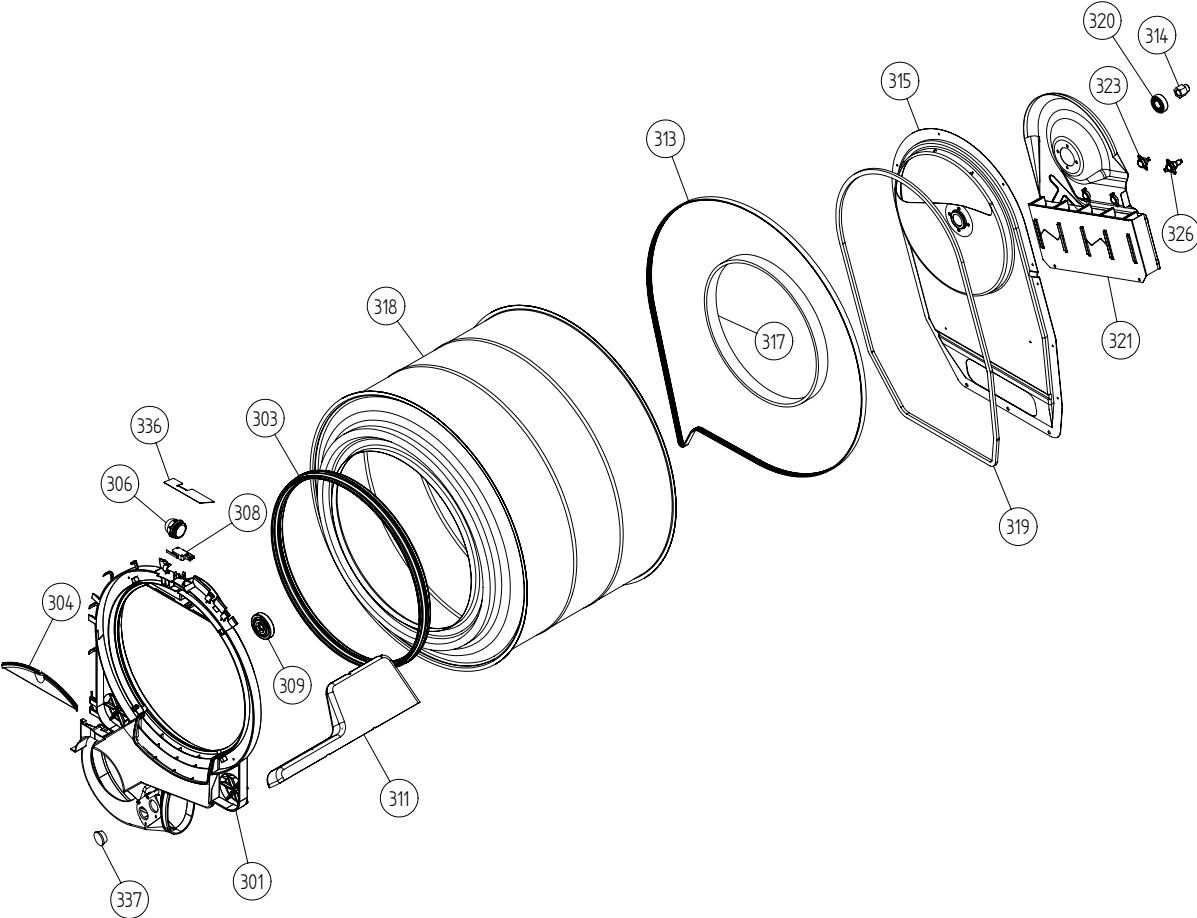
Pos	Spare part No.	Description	Qty	Comment
101	8061817-0	Top White W600s T700s	1 Pc's	
101-a	8900338	Screw 20 Torx Self Tapping	3 Pc's	
101-b	8901413	Lock Washer laundry tops	2 Pc's	
103	8064062	Top Cover Strip	1 Pc's	
106	8801174-0	Side Panel Washer 600s	2 Pc's	
107	8061763	Clip Front Plate 600700s	2 Pc's	
108	8061916	CABLE HOLDER WMD20	3 Pc's	
112	8061847-0	Front Plate 700 Series	1 Pc's	
112-a	8900338	Screw 20 Torx Self Tapping	2 Pc's	
112-b	8901413	Lock Washer laundry tops	2 Pc's	
114	8064177	Hook Lower Pane	2 Pc's	
114-a	8900338	Screw 20 Torx Self Tapping	2 Pc's	
119	8801247-0	Lower Cover w/Holes	1 Pc's	
130	8053980	STACKING Bracket ALL TDs Mus	2 Pc's	
132	8064114	Holder Dryer Feet Stacking	1 Pc's	
133	8054733	Rubber Hose Accy Drain Cond	1 Pc's	
134	8076336	REAR PANEL OUTER TD25	1 Pc's	
136	8061915	Cable Holder T700	1 Pc's	
139	8061618	BASE PAN WMD20	1 Pc's	
140	8059334	Leveling Leg Comp WMD 20	4 Pc's	



Lower Section

ASKO, T712C US - White (TD25.3)

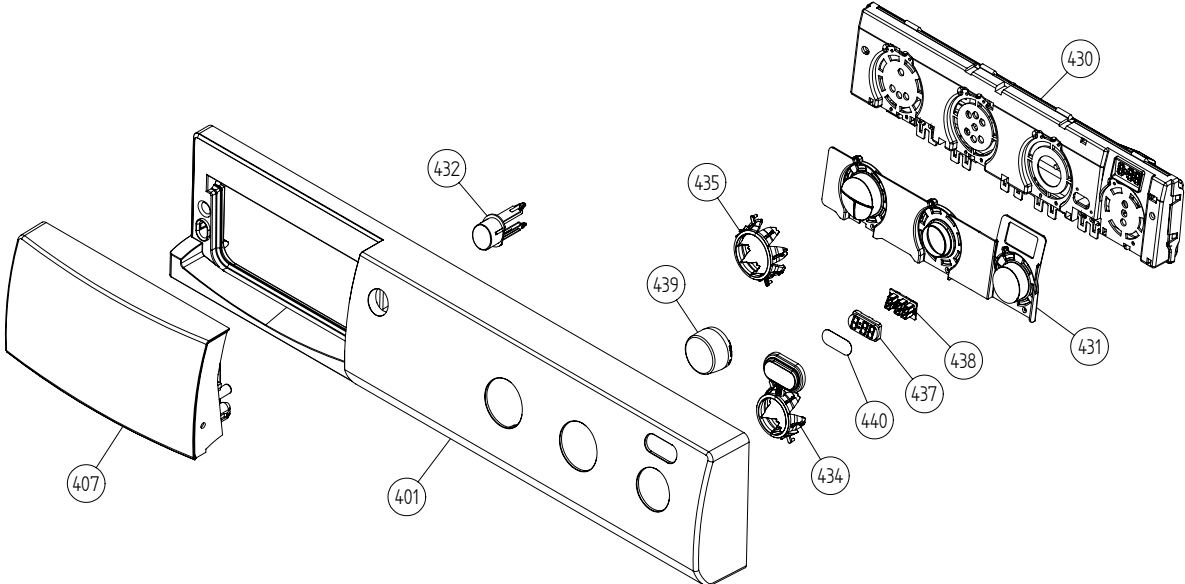
Pos	Spare part No.	Description	Qty	Comment
201	8061940	Air Canal	1 Pc's	
202	8052637	ExFan Inlet	1 Pc's	
203	8061960	Fan Impeller 700 Series	1 Pc's	
205	8052636	ExFan Motor	1 Pc's	
206	8061895	MOTOR COMPL. 60HZ TD20	1 Pc's	
206-a	8901969	Screw	4 Pc's	
206-b	8054268	Capacitor Dryer Motor 02/05	1 Pc's	
208	8055200	Blower Dryer Front All	1 Pc's	
208-a	8901192	Locking Nut WM 03/05	1 Pc's	
210	8058671	AIR HOSE	1 Pc's	
211	8080061	CONDENSER HOUSE UPPER /2 UL4	1 Pc's	
211	8077412	CONDENSER HOUSE UPPER UL4	1 Pc's	
211-a	8902087	Screw Plastic Housing 20 Torx	7 Pc's	
212	8080060	CONDENSER HOUSE LOWER /2 UL4	1 Pc's	
212	8052575	Condenser House Lower	1 Pc's	
212-a	8902087	Screw Plastic Housing 20 Torx	3 Pc's	
214	8052644	Seal Cond Door	1 Pc's	
215	8053112	Cover Cond House	1 Pc's	
216	8052606	LOCK HOOK	2 Pc's	
217	8052605	LOCK KNOB	2 Pc's	
217-a	8902099	Screw	2 Pc's	
219	8063752	CONDENSER SET COMPLETE	1 Pc's	
220	8801058	TENSION ARM Repl.by 8801214	1 Pc's	
221	8801194	Drain Pump Condenser 03/05 TD	1 Pc's	
221-a	8902087	Screw Plastic Housing 20 Torx	3 Pc's	
223	8053056	Float Condenser Dryers	1 Pc's	
224	8053098	Float Pin	1 Pc's	
225	8076103	MICROSWITCH FLOAT TD25	1 Pc's	
226	8061949	Plug Fan TD700 Series	1 Pc's	
227	8059711	Sponge Rubber Strip	1 Pc's	
235	8076330-0	FAN CASING LID UL4	1 Pc's	
235-a	8902042	Screw Protective Cover Dryer	2 Pc's	
237	8076224	THERMISTOR TD25	2 Pc's	
238	8076365	GROMMET THERMISTOR	1 Pc's	
239	8077102-49	Guard Fan 700 Series	1 Pc's	
239-a	8902042	Screw Protective Cover Dryer	2 Pc's	
242	8064184	SEALING COVER FAN HOUSE	1 Pc's	
244	8063905	SEALING STRIP CONDENSER SET	2 Pc's	
246	8058323	SHAFT SEAL DRYER	1 Pc's	
251	8079494	SEALING STRIP PUSH FIT	1 Pc's	



Cylinder and related parts

ASKO, T712C US - White (TD25.3)

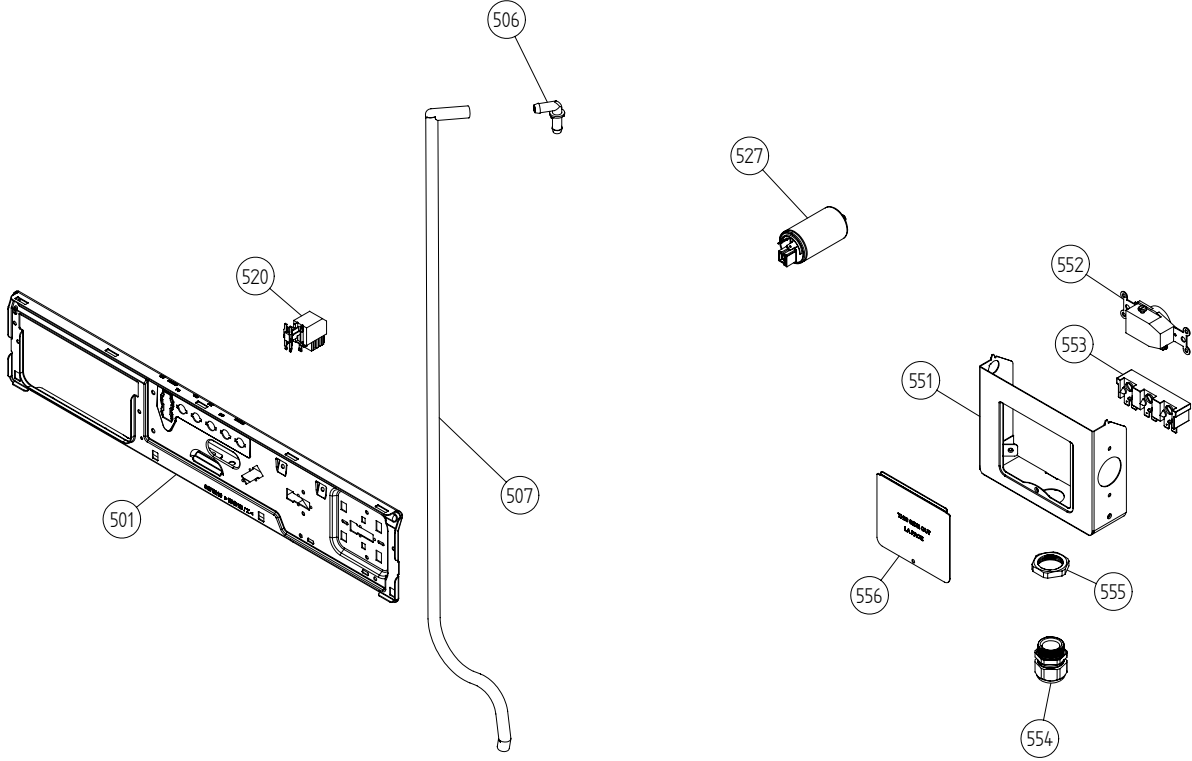
Pos	Spare part No.	Description	Qty	Comment
301	8801310	FRONT FRAME CPL TD25 NEW SEAL.	1 Pc's	
301	8801299	FRONT FRAME COMPL. TD20/21/25	1 Pc's	
301-a	8902066	Screw	4 Pc's	
303	8078539	FELTSEALING FRONT SAWN	1 Pc's	
303	8061821	Front Felt Seal T700	1 Pc's	
304	8061932-49	Lamp housing lid grey TD21	1 Pc's	
306	8061887	Lamp Chimney	1 Pc's	
308	8076104	DOOR SWITCH TD	1 Pc's	
309	8052622	Drum Roller Frt TD	2 Pc's	
309-a	8901337	Washer	2 Pc's	
309-b	8901193	Locking Nut	2 Pc's	
309-c	8901028	Screw	2 Pc's	
311	8052589-49	PADDLE TD	2 Pc's	
311	8052589	Paddle	2 Pc's	
311-a	8902099	Screw	5 Pc's	
313	8065710	sub to 8801267	1 Pc's	
314	8052632	Bushing Rear Drum 03/05 TD	1 Pc's	
314-a	8901130	SCREW A4-MVBF M8X40 7,9-8,0 HG	1 Pc's	
315	8076335	REAR PANEL INNER TD25	1 Pc's	
317	8064440	Felt sealing rear	1 Pc's	
318	8079449	CYLINDER COMPL. TD	1 Pc's	
318	8079493	CYLINDER COMPL. TD	1 Pc's	
319	8059712	Rubber Strip	1 Pc's	
320	8004439	Bearing Dryer Rear Panel All	1 Pc's	
321	8076226	HEATING ELEMENT 2500W TD25	1 Pc's	
323	8079200	THERMOSTAT 135C TD	1 Pc's	
326	8079737	THERMOSTAT 150C UL	1 Pc's	
336	8064187	GUARD, DOOR SWITCH	1 Pc's	
337	8076705	PLUG FOR THERMISTOR HOLE	2 Pc's	



Control panel

ASKO, T712C US - White (TD25.3)

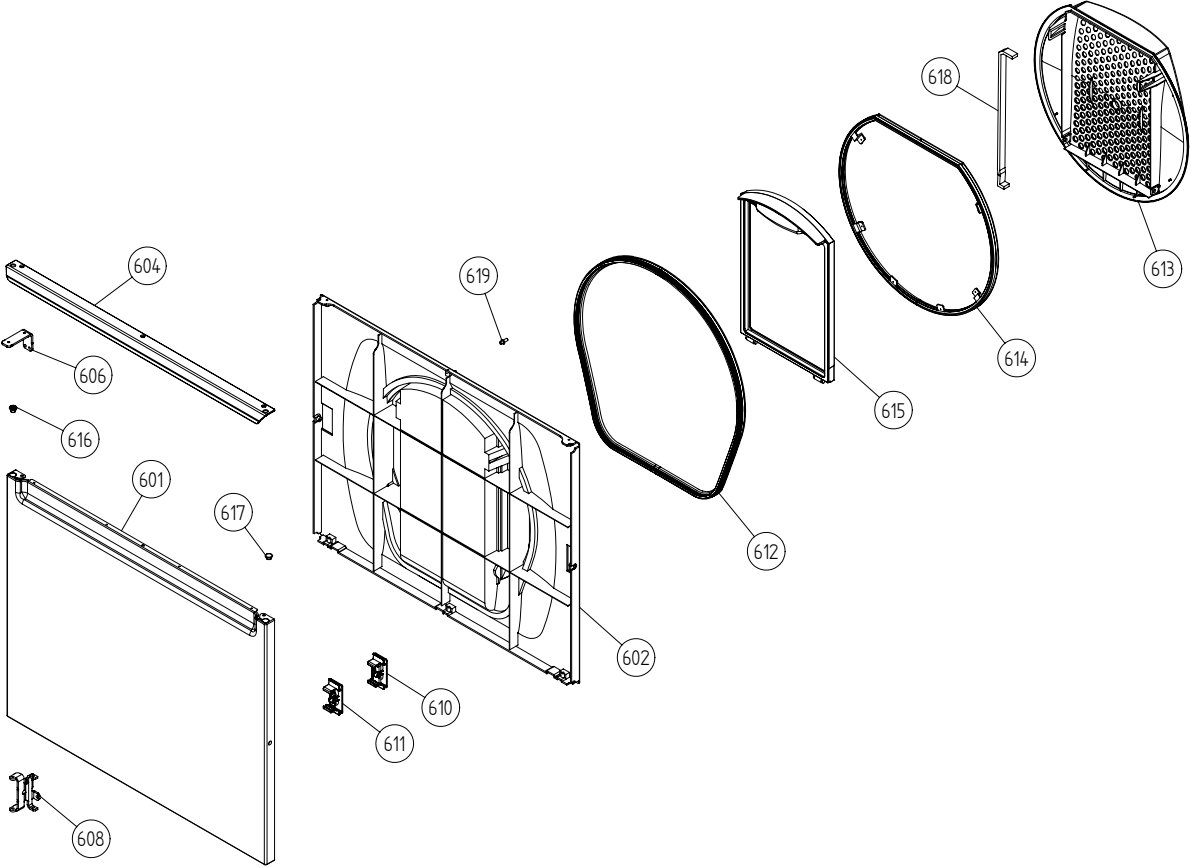
Pos	Spare part No.	Description	Qty	Comment
401	8079323-0-UL	PANEL W.HANDLE T712C ASKO US	1 Pc's	
403	8079788	LABEL PROG.INFO. TD25 US/CA	1 Pc's	
407	8061846-0-UL	Discontinued	1 Pc's	
430	8077132	CONTROL UNIT TD25.3 UL4	1 Pc's	
431	8079278-85	PUSHBUTTONS PRINTED TD25 VAR.3	1 Pc's	
432	8076364-85	PUSHBUTTON MAINSWITCH WMD25	1 Pc's	
434	8076235	LENS START/STOP WMD25	1 Pc's	
435	8076236	LENS 8 SEGMENT WMD25	2 Pc's	
437	8076685	LIGHT SCREENING LENS 7-SEGMENT	1 Pc's	
438	8076684	LENS 7-SEGMENT WMD25	1 Pc's	
439	8077334-8599UL	KNOB COMPL. SILV./TRANSP. UL4	1 Pc's	
440	8077396	DECOR PLATE WMD25	1 Pc's	
464	8077636	CABLE SET DOOR SWITCH	1 Pc's	
465	8076231	CABLE SET MOTOR,PUMP,FLOAT TD	1 Pc's	
466	8076232	CABLE SET THERMISTORS TD	1 Pc's	
467	8076229	CABLE SET HEATER TD	1 Pc's	
490	8079320	INSTRUCT. T712C ENGLISH US/CA	1 Pc's	
490	8079321	INSTRUCT. T712C FRENCH US/CA	1 Pc's	
490	8079322	INSTRUCT. T712C SPANISH US/CA	1 Pc's	



Upper Section

ASKO, T712C US - White (TD25.3)

Pos	Spare part No.	Description	Qty	Comment
501	8076210	BEAM FRONT WMD25	1 Pc's	
501-a	8900338	Screw 20 Torx Self Tapping	2 Pc's	
501-b	8901413	Lock Washer laundry tops	2 Pc's	
501-c	8902087	Screw Plastic Housing 20 Torx	2 Pc's	
506	8054072	NIPPLE WATER HOSE	1 Pc's	
507	8054732	Rubber Hose	1 Pc's	
520	8073782	MAIN PUSH SWITCH	1 Pc's	
527	8076202	EMC-FILTER WITH INDUCTOR	1 Pc's	
527	8076225	EMC-FILTER Repl.by 8076202	1 Pc's	
527-a	8901155	Nut	1 Pc's	
527-b	8901419	Lock Washer	1 Pc's	
551	8076324	Connection box T711	1 Pc's	
552	8061033	Subs to 8061455	1 Pc's	
553	8061891	Terminal Block DryerTD 20	1 Pc's	
554	8078291	GROMMET 94793	1 Pc's	
554	8060462	Grommet	1 Pc's	
555	8060463	Lock Nut	1 Pc's	
556	8063756	Cover Terminal block T700s	1 Pc's	
556-a	8901097	Screw Terminal	1 Pc's	



Outer Door

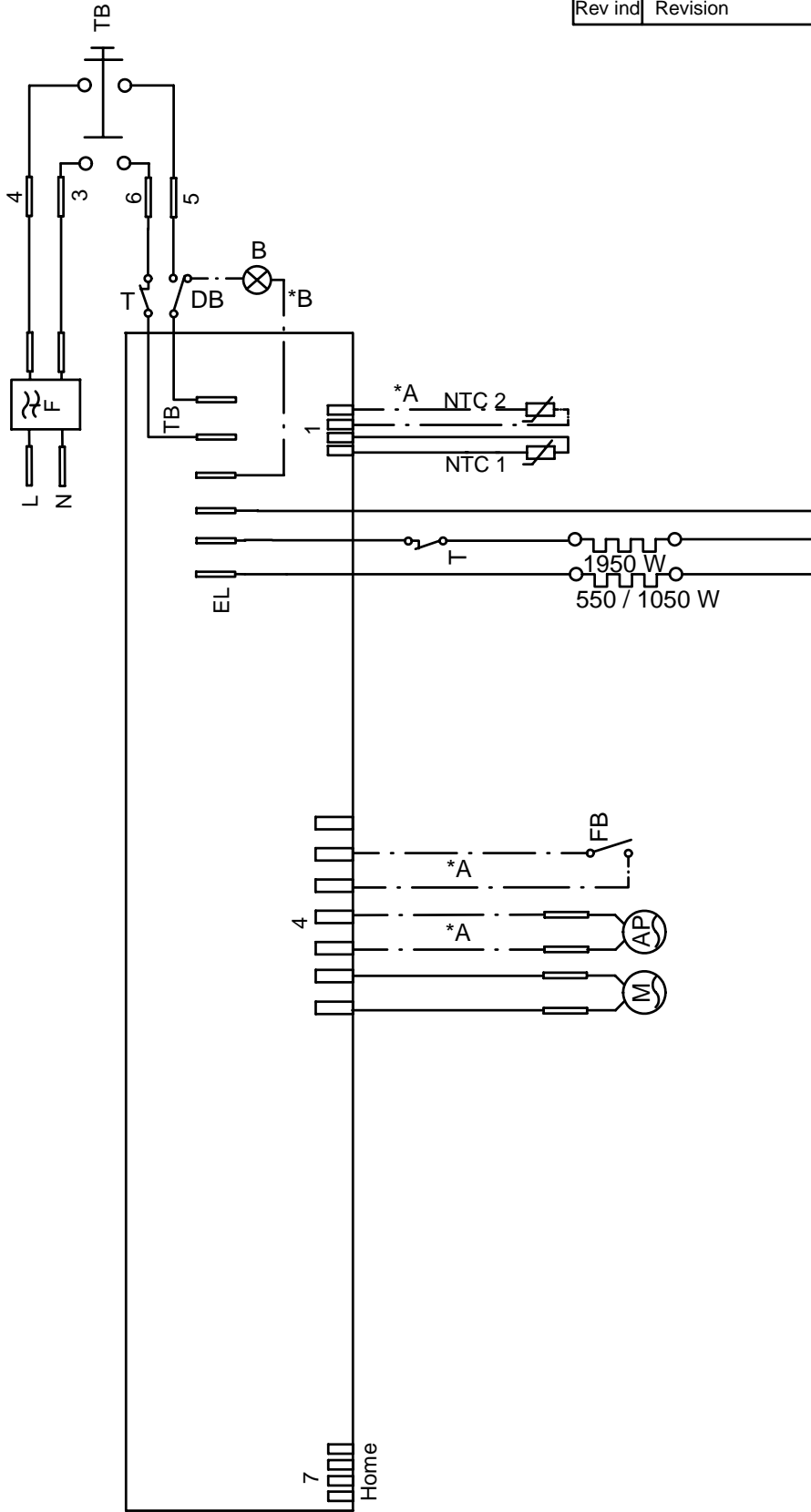
ASKO, T712C US - White (TD25.3)

Pos	Spare part No.	Description	Qty	Comment
601	8061733-0	Outer Door 600/700 Series	1 Pc's	
602	8061810	Inner Door Dryer T700 Series	1 Pc's	
602-a	8902068	Screw	5 Pc's	
604	8061813-0	Door Handle T700	1 Pc's	
606	8061803-0	Hinge Pin Upper compl 700s	1 Pc's	
606	8061805-0	hinge T711	1 Pc's	
606	8061805	SUB TO 80618050 hinge T711	1 Pc's	
606-a	8901097	Screw Terminal	2 Pc's	
606-b	8901619	Pop Rivet Det Comp	1 Pc's	
608	8061807-0	Lower Hinge Lower Compl	1 Pc's	
608	8061806-0	hinge lower T711	1 Pc's	
608-a	8900338	Screw 20 Torx Self Tapping	2 Pc's	
608-b	8901097	Screw Terminal	1 Pc's	
610	8061878	Magnet Door T700s	1 Pc's	
611	8061886	Lock Holder T700 Series	1 Pc's	
612	8061815	Seal Dryer Door T700s	1 Pc's	
613	8065840	Filter Holder Compl	1 Pc's	
614	8065274	Filter bracket T711	1 Pc's	
615	8061812	Double Lint filter 700s	1 Pc's	
616	8061865-0	Bushing Hinge Pin T700s	2 Pc's	
617	8061953-0	Door Plug T700s	1 Pc's	
618	8801250	Kit sealing strip/filter hold	1 Pc's	
619	8064240	Pin Door Switch Dryer	1 Pc's	

This document must not be copied without our written permission, and the contents thereof must not be imparted to a third party nor be used for any unauthorized purpose. Contraception will be prosecuted. ASKO CYLINDA AB

S:\UWVMD25\1_Tryckunderlag\Kopplingschema\8076101 Kopplingschema TD25\8076101 Circuit diagram TD25-b.dft , pema , 2005-04-12 15:50:48

Rev ind	Revision	Appd	Year	Week
---------	----------	------	------	------



AP: DRAIN PUMP
 EL: HEATING ELEMENT
 F: FILTER
 NTC: THERMISTOR
 TB: MAIN SWITCH
 FB: FLOAT SWITCH
 DO: DOOR SWITCH
 T: THERMOSTAT
 M: MOTOR
 B: INTERIOR LIGHT

—— WIRES IN ALL MACHINES
 - - - INTERNAL CONNECTION
 - · - WIRES IN SOME MACHINES

*A CONDENSE DRYER
 *B WITH INTERIOR LIGHT

Pos.	Qty	Part No.	Name of item	Material
Material		Dens.Kg/dm3	Dimensions, Type, etc.	
Scale		Gen.tolerance	Description(ENG) CIRCUIT DIAGRAM TD25	
Designed by Pema		Gen.tol.Angle	Description(SE) KOPPLINGSSCHEMA TD25	
Released by		Iss by Dept	Year	Week
ASKO CYLINDA		UT	03	28
			80 761 01	b
			Rev Ind	Replace
				Project
				TD25