

This Owner's Manual is provided and hosted by [Appliance Factory Parts](http://www.appliancefactoryparts.com).



FANTECH FTC463276 Owner's Manual

**[Shop genuine replacement parts for FANTECH
FTC463276](#)**



[Find Your FANTECH Fan Parts - Select From 108 Models](#)

----- Manual continues below -----

SER 200 Fresh Air Appliance

Item #: 463276



AHRI CERTIFIED



Technical parameters

| Product | |
|------------------------|-----------------------------|
| Voltage (nominal) | 120 V |
| Frequency | 60 Hz |
| Phase(s) | 1~ |
| Input power | 240 W |
| Input current | 2.3 A |
| Air flow | max 186 cfm |
| Static pressure | 0.4 in.wg |
| Certificate | CSA |
| Exchanger | |
| Exchanger type | Energy recovery (synthetic) |
| Dimensions and weights | |
| Weight | 52.4 lb |
| Used for | |
| Installation placement | Horizontal |

Description

- Airflow up to 187 cfm @ 0.4" Ps serves 2 to 5 bedroom homes
- Removable screw terminal for easy connection
- Compatible with Fantech's low-voltage controls
- Three speed ventilation control
- Washable electrostatic filters
- Optional drain line
- Anti-microbial material
- Withstands freezing
- AHRI certified (energy recovery core)

Application

Fantech's SER 200 is an Energy Recovery Ventilator designed for higher static pressure applications.

How it works

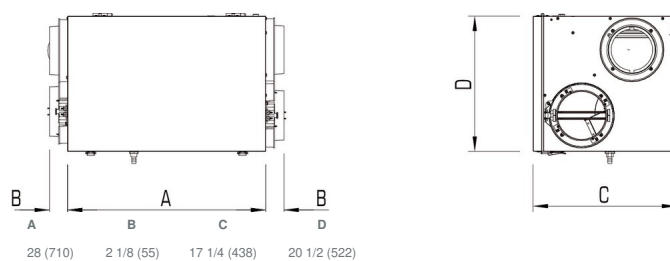
The unit brings a continuous supply of fresh air into a home while exhausting an equal amount of contaminated air. The energy recovery core at the center of the unit transfers...

[Find more details in our online catalogue](#)

Performances

| | Speed | Supply Temperature | | Net Airflow | | Consumed Power W | Net Effectiveness | | |
|---------|--------|--------------------|-----|-------------|-----|---------------------|-------------------|----------|---------|
| | | °F | °C | cfm | L/s | | Sensible % | Latent % | Total % |
| Heating | Low | 35 | 1.7 | 100 | 47 | 146 | 74 | 59 | 69 |
| | Medium | 35 | 1.7 | 150 | 71 | 200 | 70 | 52 | 63 |
| | High | 35 | 1.7 | 200 | 94 | 253 | 66 | 46 | 59 |
| Cooling | Low | 95 | 35 | 100 | 47 | 146 | 74 | 55 | 63 |
| | Medium | 95 | 35 | 150 | 71 | 200 | 70 | 48 | 56 |
| | High | 95 | 35 | 200 | 94 | 253 | 66 | 42 | 52 |

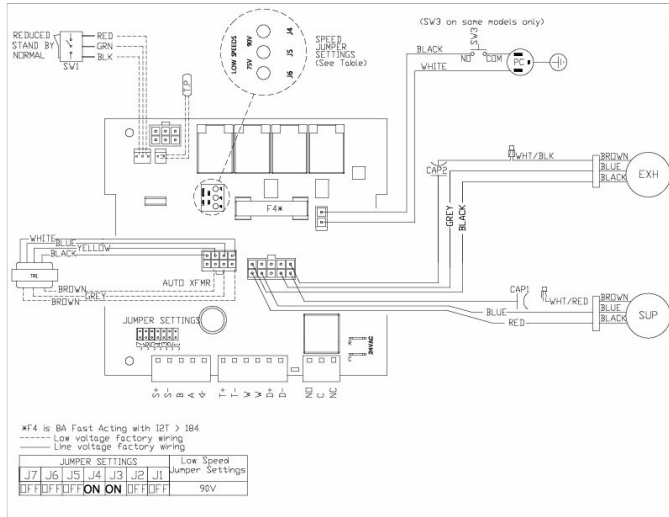
Dimensions



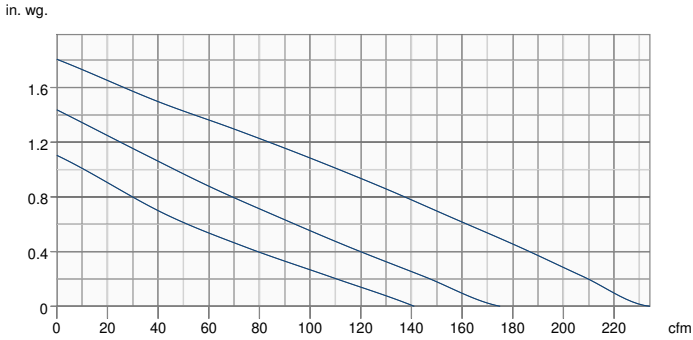
28 (710) 2 1/8 (55) 17 1/4 (438) 20 1/2 (522)

Dimensional information is in inches (mm)

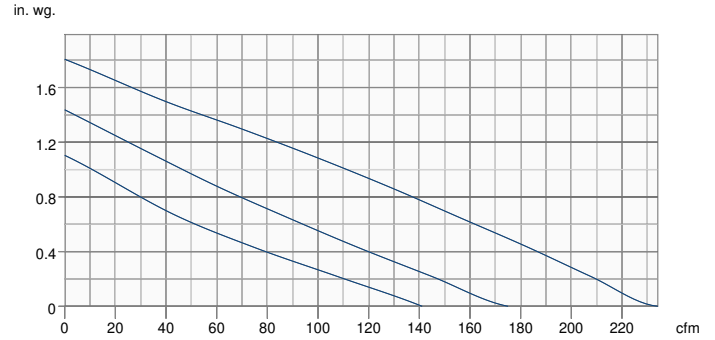
Wiring



Supply - Performance curve



Extract - Performance curve



| Unit | Supply | Extract |
|----------------------------|--------------------------|---------|
| Required air flow | - | - |
| Working air flow | - | - |
| Required external pressure | - | - |
| Working air pressure | - | - |
| Power | - | - |
| Current | - | - |
| Air density | 0.075 lb/ft ³ | |
| Fan control - RPM | - | - |

Accessories

ECO-Feel® Auto IAQ Control (414729)
 RTS-W Wireless Timer (414920)
 FIDT 6 Insulated Flex Duct (411064)
 Filter, MERV8, 200 cfm, Repl. kit (414922)
 MGE 6 Metal Exhaust Grill (411371)

ECO-Touch® Auto IAQ (414727)
 COM6P Supply and Exhaust Hoods (40222)
 ADC 6 Shut-off Damper w Motor (44967)
 MDEH1 Low Voltage Dehumidistat (40172)
 MGS 6 Metal Supply Grill (411242)

Documents

E400023 SHR200(R)-SER200 Dimensional Submittal.pdf
 445506 SER 200 IOM EN FR.pdf
 463276 SER200 Spare Parts List.pdf
 445527 SER200 Spec Sheet.pdf