

This Owner's Manual is provided and hosted by [Appliance Factory Parts](#).



FANTECH FTC463235 Owner's Manual

**[Shop genuine replacement parts for FANTECH
FTC463235](#)**



[Find Your FANTECH Fan Parts - Select From 108 Models](#)

----- Manual continues below -----

VER 100 Fresh Air Appliance

Item #: 463235

Variant : 120V 1~ 60Hz



Technical parameters

Product	
Voltage (nominal)	120 V
Frequency	60 Hz
Phase(s)	1~
Input power	168 W
Input current	1.4 A
Air flow	125 cfm
Air flow	max 125 cfm
Static pressure	4 in.wg
Certificate	CSA, HVI
Exchanger	
Exchanger type	Energy recovery (synthetic)
Dimensions and weights	
Weight	35.9 lb
Used for	
Installation placement	Vertical

Description

- For condos and 1-2 bedroom apartments or homes
- Removable screw terminal for easy connection
- Compatible with Fantech's low-voltage controls
- Three speed ventilation control
- Washable electrostatic filters
- Anti-microbial material
- Withstands freezing
- AHRI certified

Application

Fantech's VER 100 is a Fresh Air Appliance with energy recovery. It is designed for higher static pressure applications. The appliance provide up to 124 cfm of fresh air.

How it works

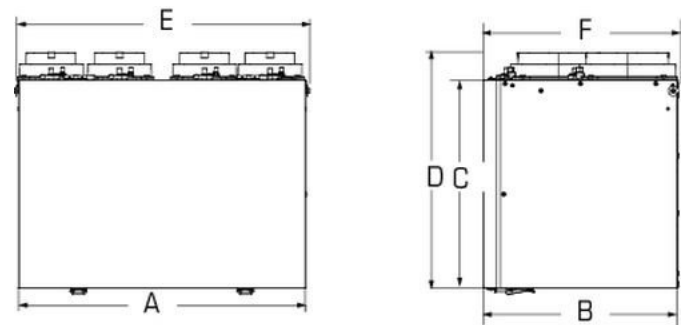
The unit brings a continuous supply of fresh air into a home while exhausting an equal amount of contaminated air. The energy recovery core at the center of the...

[Find more details in our online catalogue](#)

Performances

	Speed	Supply Temperature		Net Airflow		Net Effectiveness			
		°F	°C	cfm	L/s	W	%	%	%
Heating	Low	35	1.7	50	24	50	63	47	58
	Medium	35	1.7	75	35	92	61	44	55
	High	35	1.7	100	47	130	59	41	53
Cooling	Low	95	35	50	24	50	63	43	51
	Medium	95	35	75	35	95	60	40	48
	High	95	35	100	47	130	59	37	45

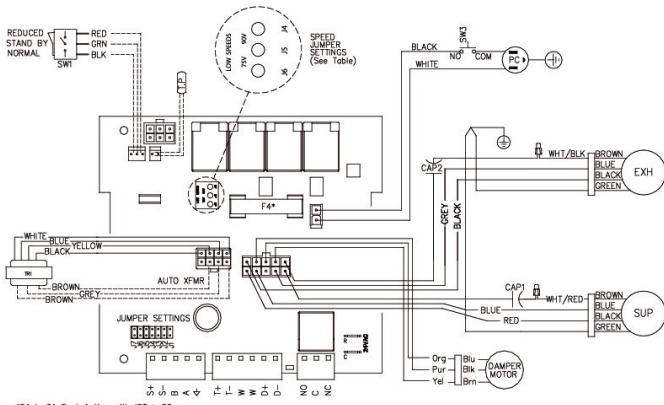
Dimensions



A	B	C	D	E	F	Duct size
21 1/2 (546)	14 1/2 (368)	15 5/8 (397)	17 8/9 (454)	22 1/2 (572)	15 (381)	5 (125) Oval

Dimensional information is in inches (mm)

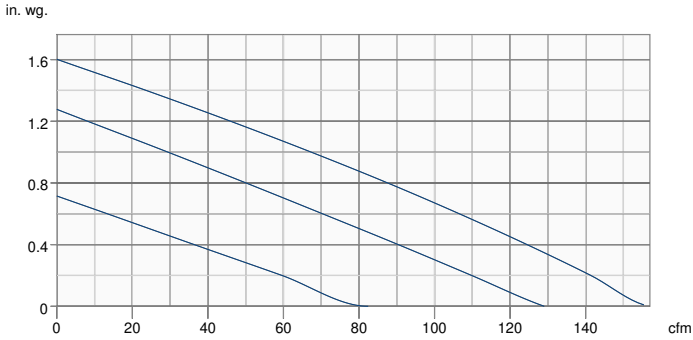
Wiring



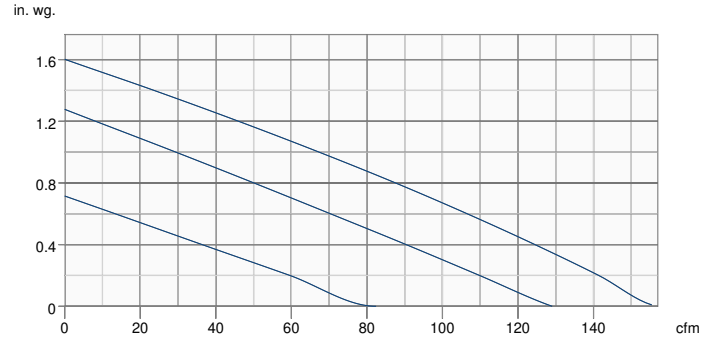
*F4 is 3A Fast Acting with I2T > 20
 ----- Low voltage factory wiring
 _____ Line voltage factory wiring

Model	JUMPER SETTINGS						Low Speed Jumper Settings
	J7	J6	J5	J4	J3	J2	
Flex100H	ON	OFF	OFF	OFF	OFF	OFF	OFF
VHR100R	ON	OFF	OFF	OFF	OFF	OFF	JP4 75V
VER100	OFF	OFF	OFF	ON	ON	OFF	JP4 190V

Supply - Performance curve



Extract - Performance curve



Unit	Supply	Extract
Required air flow	-	-
Working air flow	-	-
Required external pressure	-	-
Working air pressure	-	-
Power	-	-
Current	-	-
Air density	0.075 lb/ft³	
Fan control - RPM	-	-

Accessories

ECO-Feel® Auto IAQ Control (414729)
 RTS-W Wireless Timer (414920)
 FIDT 5 Insulated Flex Duct (411062)
 Filter,MERV6,100cfm,Repl.kit (414645)
 MGE 5 Metal Exhaust Grill (411370)

ECO-Touch® Auto IAQ (414727)
 COM5P Supply and Exhaust Hoods (40223)
 ADC 6 Shut-off Damper w Motor (44967)
 Filter,MERV8,100 cfm,Repl.kit (414923)
 MGS 5 Metal Supply Grill (411369)

Documents

428476 VER100 Spec Sheet.pdf
 428465 VER100 IOM EN FR.pdf
 940452 VER100 Spare Part List.pdf