

This Owner's Manual is provided and hosted by [Appliance Factory Parts](#).



FANTECH FTC463235 Owner's Manual

**[Shop genuine replacement parts for FANTECH
FTC463235](#)**



[Find Your FANTECH Fan Parts - Select From 108 Models](#)

----- Manual continues below -----

VER 100 Fresh Air Appliance

Top duct connection ERV, 105 cfm

Item #: 463235

Variant: 120V 1~ 60Hz



- For condos and 1-2 bedroom apartments or homes
- Removable screw terminal for easy connection
- Compatible with Fantech's low-voltage controls
- Three speed ventilation control
- Washable electrostatic filters
- Anti-microbial material
- Withstands freezing
- AHRI certified

Application

Fantech's VER 100 is a Fresh Air Appliance with energy recovery. It is designed for higher static pressure applications. The appliance provide up to 124 cfm of fresh air.

How it works

The unit brings a continuous supply of fresh air into a home while exhausting an equal amount of contaminated air. The energy recovery core at the center of the unit transfers heat and moisture from incoming air to the outgoing air that was cooled and dried by the building's air conditioner.

Installation

The VER100 is easily installed with the supplied speed bracket.

Note: If you are using the appliance for a simplified installation, i.e. connecting appliance's supply air duct to a furnace's return air duct, the appliance must operate continuously. In case it is turned off, the furnace will continue to draw in outdoor air directly into the furnace without re-heating or re-cooling. If the appliance is installed such that the homeowner may turn it off during the cold or hot seasons, we recommend installing a motorized damper ADC between the appliance's supply air and the furnace's return air duct that closes when the appliance is not operating.

Technical parameters



Product		
Voltage (nominal)	120	V
Frequency	60	Hz
Phase(s)	1~	
Input power	168	W
Input current	1.4	A
Air flow	125	cfm
Air flow	max 125	cfm
Static pressure	4	in.wg
Certificate	CSA, HVI	

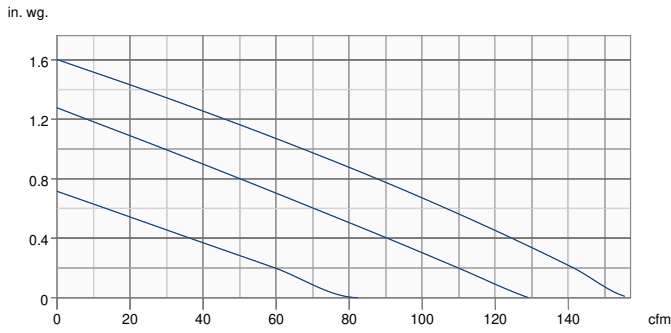
Exchanger		
Exchanger type	Energy recovery (synthetic)	

Dimensions and weights		
Weight	35.9	lb

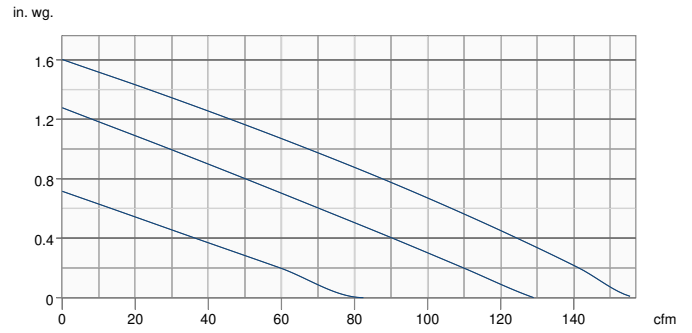
Used for		
Installation placement	Vertical	

Performance

Supply - Performance curve



Extract - Performance curve

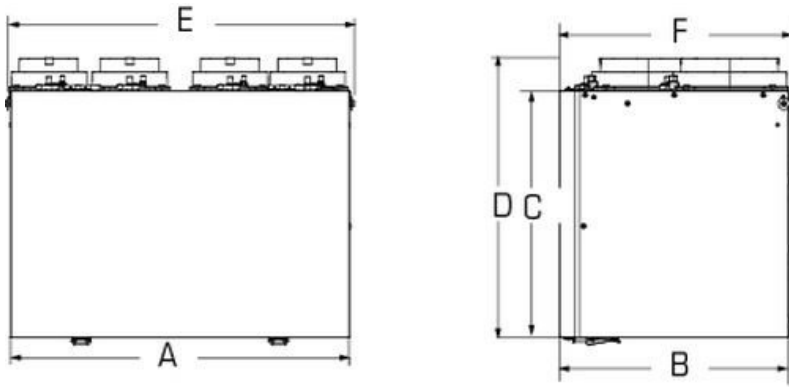


Unit	Supply	Extract
Required air flow	-	-
Working air flow	-	-
Required external pressure	-	-
Working air pressure	-	-
Power	-	-
Current	-	-
Air density	0.075 lb/ft ³	
Fan control - RPM	-	-

Performances

	Speed	Supply Temperature		Net Airflow		Net Effectiveness			
		°F	°C	cfm	L/s	Latent W	Total %	%	
Heating	Low	35	1.7	50	24	50	63	47	58
	Medium	35	1.7	75	35	92	61	44	55
	High	35	1.7	100	47	130	59	41	53
Cooling	Low	95	35	50	24	50	63	43	51
	Medium	95	35	75	35	95	60	40	48
	High	95	35	100	47	130	59	37	45

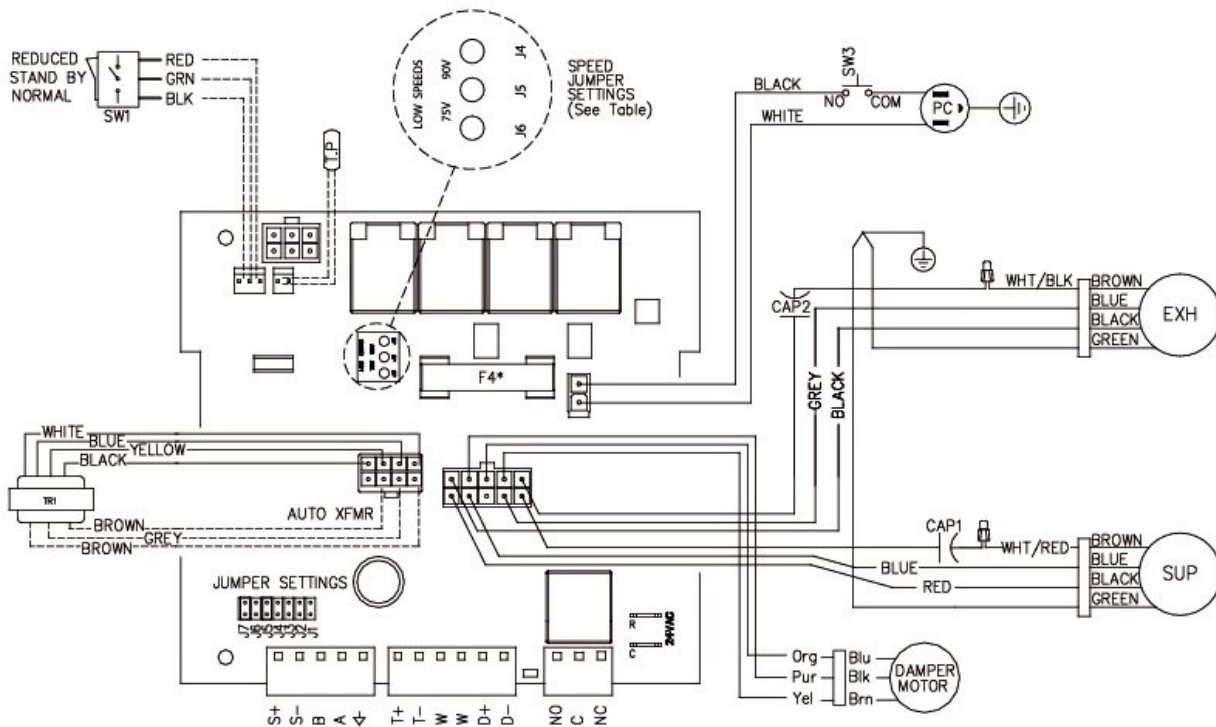
Dimensions



A	B	C	D	E	F	Duct size
21 1/2 (546)	14 1/2 (368)	15 5/8 (397)	17 8/9 (454)	22 1/2 (572)	15 (381)	5 (125) Oval

Dimensional information is in inches (mm)

Wiring



*F4 is 3A Fast Acting with I2T > 20
 ----- Low voltage factory wiring
 - - - - - Line voltage factory wiring

Model	JUMPER SETTINGS							Low Speed Jumper Settings	
	J7	J6	J5	J4	J3	J2	J1	JP4	Settings
Flex100H	ON	ON	OFF	OFF	OFF	OFF	OFF	JP4	75V
VHR100R	ON	OFF	OFF	OFF	OFF	OFF	OFF	JP4	90V
VER100	OFF	OFF	OFF	ON	ON	OFF	OFF	JP4	90V

Accessories

- ECO-Feel® Auto IAQ Control (414729)
- RTS-W Wireless Timer (414920)
- FIDT 5 Insulated Flex Duct (411062)
- Filter,MERV6,100cfm,Repl.kit (414645)
- MGE 5 Metal Exhaust Grill (411370)
- ECO-Touch® Auto IAQ (414727)
- COM5P Supply and Exhaust Hoods (40223)
- ADC 6 Shut-off Damper w Motor (44967)
- Filter,MERV8,100 cfm,Repl.kit (414923)
- MGS 5 Metal Supply Grill (411369)

Documents

- 428476 VER100 Spec Sheet.pdf
- 428465 VER100 IOM EN FR.pdf
- 940452 VER100 Spare Part List.pdf

Specification

Fans

Two (2) factory-balanced fans with backward curved blades. Motors come with permanently lubricated, sealed ball-bearings to guarantee long life and maintenance-free operation.

Energy Recovery Core

AHRI certified core made from water vapor transport durable polymer membrane that is highly permeable to humidity. The ERV core is freeze tolerant and water washable. Core dimensions are 8.4 x 8.4" (213 x 213 mm) with a 15" (381 mm) depth.

Defrost

A preset frost prevention sequence is activated at an outdoor air temperature of 14°F (-10°C) and lower. During the frost prevention sequence, the supply blower shuts down and the exhaust blower switches into high speed to maximize the effectiveness of the frost prevention strategy. The unit then returns to normal operation and continues cycle.

Serviceability

Core, filters, fans, drain pan and electrical panel can be accessed easily from the access panel. Core conveniently slides out with only 14" (432 mm) clearance.

Case

24 gauge galvanized pre-painted steel corrosion resistant

Insulation

Cabinet is fully insulated with 1" (25 mm) foil-face high density expanded polystyrene.

Filters

Two (2) washable electrostatic panel type air filters 8.5" (216mm) x 12.5" (318 mm) x 0.125" (3mm).

Controls

External three (3) position (Low/Stand By/Medium) rocker switch that will offer continuous ventilation. Fantech offers a variety of external controls. (see controls)

Installation

Unit is typically installed using supplied wall bracket.

Warranty

5 years on energy recovery core, 7 year on motors, and 5 year on parts.

Requirements and standards

- Complies with the UL 1812 requirements regulating the construction and installation of Heat Recovery Ventilators
- Complies with the CSA C22.2 no. 113 Standard applicable to ventilators
- Complies with the CSA F326 requirements regulating the installation of Heat Recovery Ventilators
- Technical data was obtained from published results of test relating to CSA C439 Standards
- Energy Recovery Core is ISO 846 certified for mold and bacteria resistance and AHRI certified (certificate #8931522)
- Technical data was obtained from published results of test relating to AHRI 1060 Standards