

This Owner's Manual is provided and hosted by [Appliance Factory Parts](#).



# FANTECH FTC463278 Owner's Manual

**[Shop genuine replacement parts for FANTECH  
FTC463278](#)**



**[Find Your FANTECH Fan Parts - Select From 108 Models](#)**

----- Manual continues below -----

# VER 200 Fresh Air Appliance

Item #: 463278

Variant : 120V 1~ 60Hz



## Technical parameters

Product	
Voltage (nominal)	120 V
Frequency	60 Hz
Phase(s)	1~
Input power	187 W
Input current	1.24 A
Air flow	max 170 cfm
Static pressure	0.4 in.wg
Certificate	CSA, AHRI
Exchanger	
Exchanger type	Energy recovery (synthetic)
Dimensions and weights	
Weight	52.9 lb
Used for	
Installation placement	Vertical

## Description

- For large apartments and 3 to 5 bedroom homes
- Removable screw terminal for easy connection
- Compatible with Fantech's low-voltage controls
- Three speed ventilation control
- Washable electrostatic filters
- Anti-microbial material
- Withstands freezing
- AHRI certified

## Application

Fantech's VER 200 is a Fresh Air Appliance with energy recovery. The product is designed for higher static pressure applications. Provides up to 200 cfm of fresh air.

## How it works

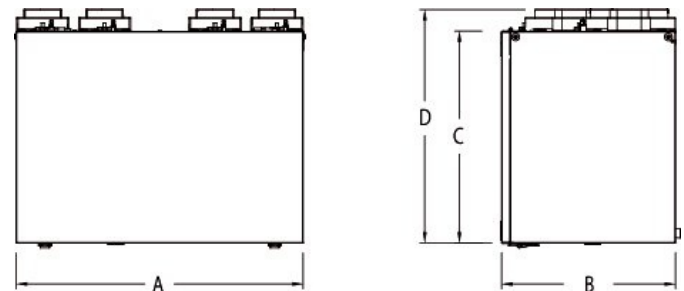
The unit brings a continuous supply of fresh air into a home while exhausting an equal amount of contaminated air. The energy recovery core at the center of the unit...

[Find more details in our online catalogue](#)

## Performances

	Speed	Supply Temperature		Net Airflow		Net Effectiveness			
		°F	°C	cfm	L/s	Latent W	Total %	%	
Heating	Low	35	1.7	90	42	68	75	61	70
	Medium	35	1.7	138	65	1274	71	54	64
	High	35	1.7	170	80	180	69	59	62
Cooling	Low	95	35	90	42	68	75	58	64
	Medium	95	35	138	65	124	71	50	58
	High	95	35	170	80	180	69	46	55

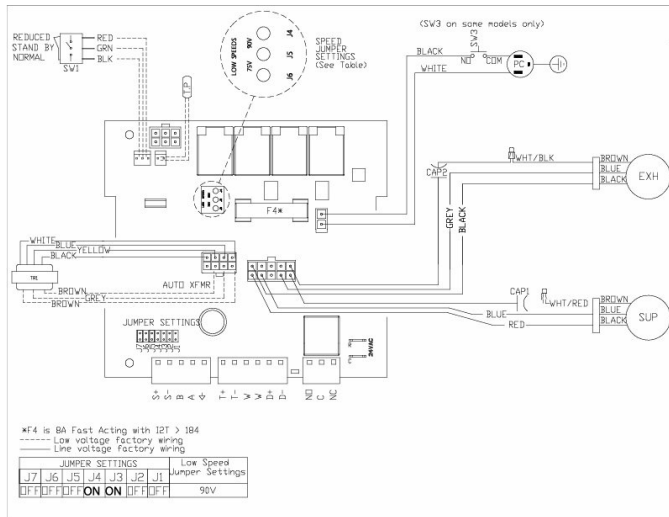
## Dimensions



A	B	C	D	Duct Size
28 (720)	17 (430)	20 1/2 (522)	22 11/16 (576)	6 (153)

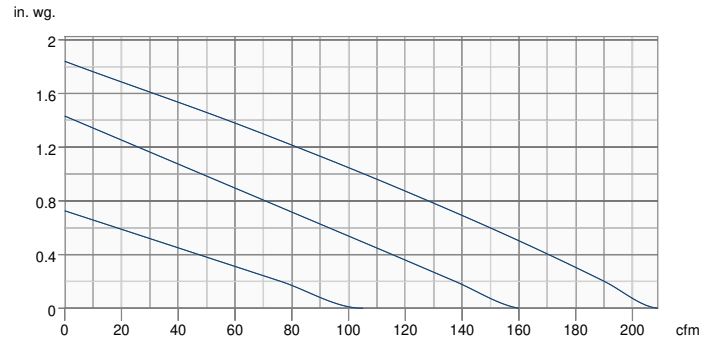
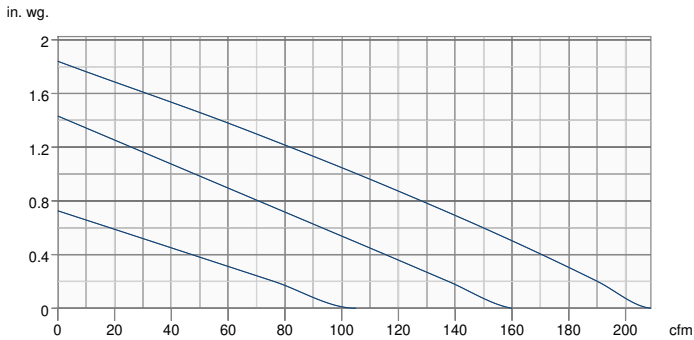
Dimensional information is in inches (mm)

## Wiring



## Supply - Performance curve

## Extract - Performance curve



Unit	Supply	Extract
Required air flow	-	-
Working air flow	-	-
Required external pressure	-	-
Working air pressure	-	-
Power	-	-
Current	-	-
Air density	0.075 lb/ft³	
Fan control - RPM	-	-

## Accessories

ECO-Feel® Auto IAQ Control (414729)  
 RTS-W Wireless Timer (414920)  
 FIDT 6 Insulated Flex Duct (411064)  
 ADC 6 Shut-off Damper w Motor (44967)  
 MGE 6 Metal Exhaust Grill (411371)

ECO-Touch® Auto IAQ (414727)  
 COM6P Supply and Exhaust Hoods (40222)  
 HS 6W External Louver Exhaust (45153)  
 Filter, MERV8, 200 cfm, Repl. kit (414922)  
 MGS 6 Metal Supply Grill (411242)

## Documents

445508 VER 200 IOM EN FR.pdf  
 463278 VER200 Spare Part List.pdf  
 445528 VER200 Spec Sheet.pdf