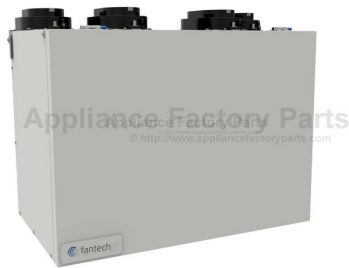


This Owner's Manual is provided and hosted by [Appliance Factory Parts](#).



# FANTECH FTC463278 Owner's Manual

**[Shop genuine replacement parts for FANTECH  
FTC463278](#)**



**[Find Your FANTECH Fan Parts - Select From 108 Models](#)**

----- Manual continues below -----

# VER 200 Fresh Air Appliance

Top duct connection ERV, 173 cfm

Item #: 463278

Variant: 120V 1~ 60Hz



- For large apartments and 3 to 5 bedroom homes
- Removable screw terminal for easy connection
- Compatible with Fantech's low-voltage controls
- Three speed ventilation control
- Washable electrostatic filters
- Anti-microbial material
- Withstands freezing
- AHRI certified

## Application

Fantech's VER 200 is a Fresh Air Appliance with energy recovery. The product is designed for higher static pressure applications. Provides up to 200 cfm of fresh air.

## How it works

The unit brings a continuous supply of fresh air into a home while exhausting an equal amount of contaminated air. The energy recovery core at the center of the unit transfers heat and moisture from incoming air to the outgoing air that was cooled and dried by the building's air conditioner.

## Installation

Four (4) hanging chains with springs are used to hang VER200 to ceiling joists. The hardware pack comes with the product. To mount product on a wall, the wall mount (#422998) is needed. Purchased separately.

**Note:** If you are using the appliance for a simplified installation, i.e. connecting appliance's supply air duct to a furnace's return air duct, the appliance must operate continuously. In case it is turned off, the furnace will continue to draw in outdoor air directly into the furnace without re-heating or re-cooling. If the appliance is installed such that the homeowner may turn it off during the cold or hot seasons, we recommend installing a motorized damper ADC between the appliance's supply air and the furnace's return air duct that closes when the appliance is not operating

## Technical parameters



Product		
Voltage (nominal)	120	V
Frequency	60	Hz
Phase(s)	1~	
Input power	187	W
Input current	1.24	A
Air flow	max 170	cfm
Static pressure	0.4	in.wg
Certificate	CSA, AHRI	

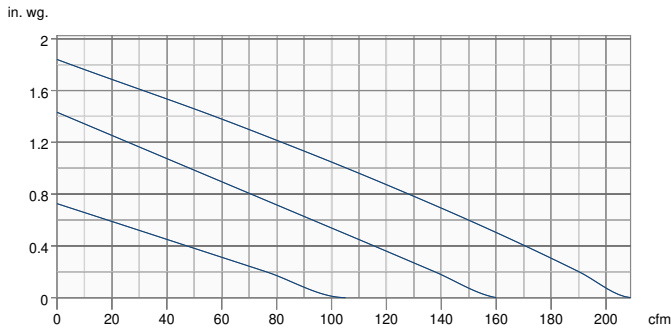
Exchanger		
Exchanger type	Energy recovery (synthetic)	

Dimensions and weights		
Weight	52.9	lb

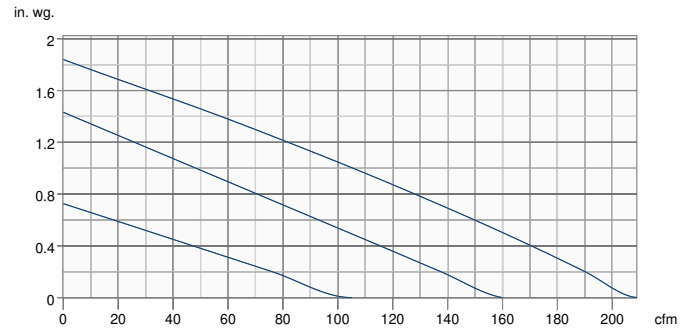
Used for		
Installation placement	Vertical	

# Performance

Supply - Performance curve



Extract - Performance curve

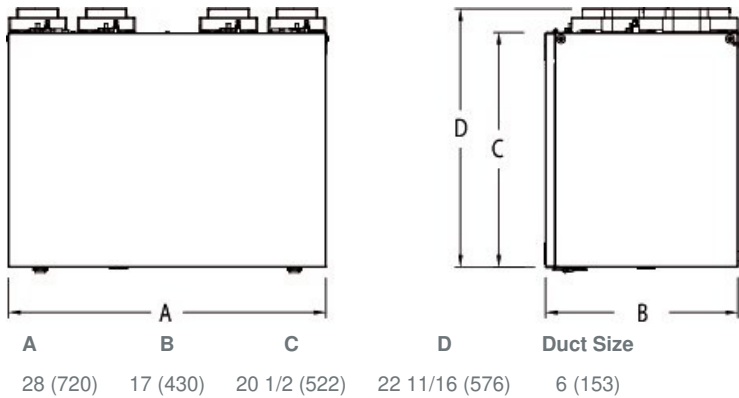


Unit	Supply	Extract
Required air flow	-	-
Working air flow	-	-
Required external pressure	-	-
Working air pressure	-	-
Power	-	-
Current	-	-
Air density	0.075 lb/ft <sup>3</sup>	
Fan control - RPM	-	-

## Performances

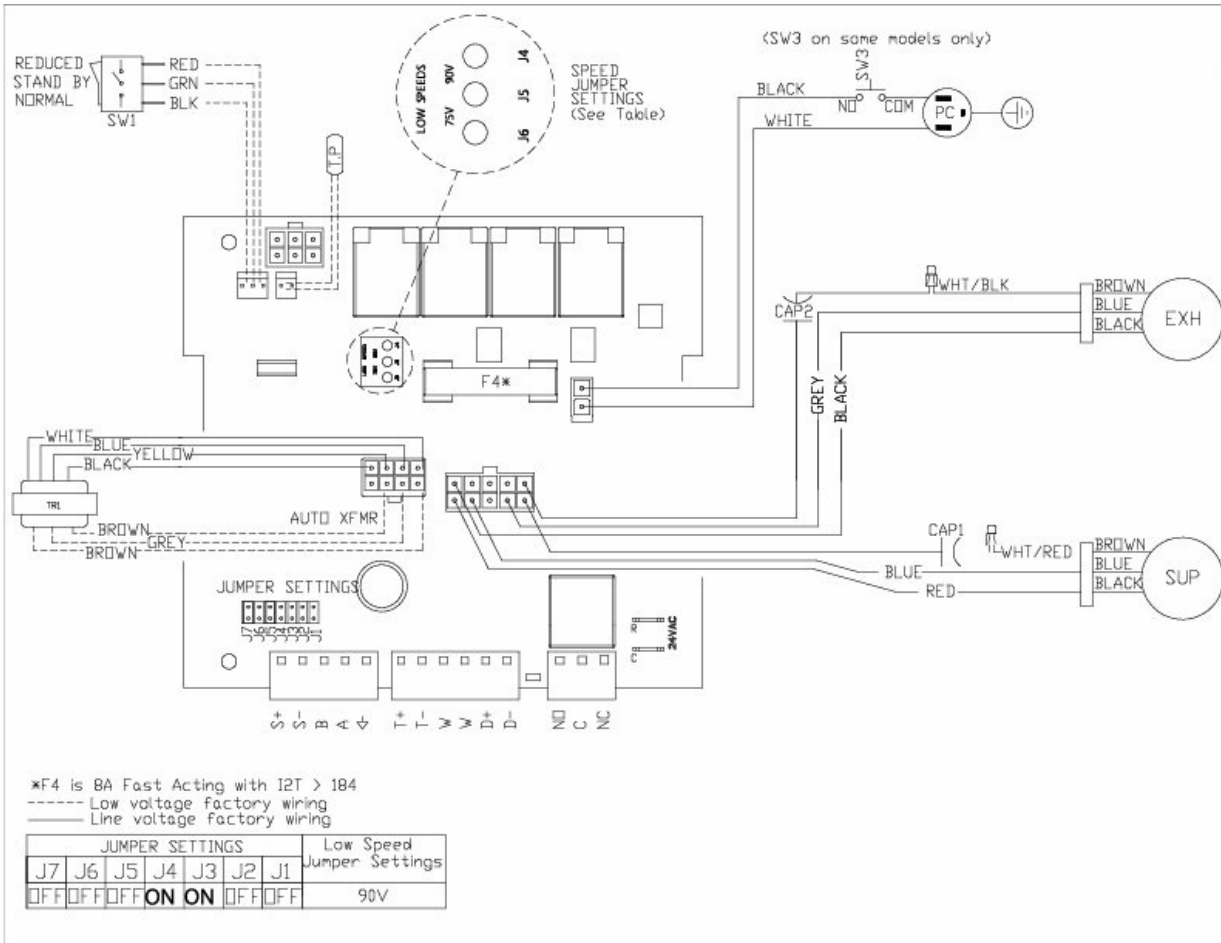
	Speed	Supply Temperature		Net Airflow		Net Effectiveness			
		°F	°C	cfm	L/s	Latent W	Total %	%	
Heating	Low	35	1.7	90	42	68	75	61	70
	Medium	35	1.7	138	65	1274	71	54	64
	High	35	1.7	170	80	180	69	59	62
Cooling	Low	95	35	90	42	68	75	58	64
	Medium	95	35	138	65	124	71	50	58
	High	95	35	170	80	180	69	46	55

## Dimensions



Dimensional information is in inches (mm)

# Wiring



## Accessories

- ECO-Feel® Auto IAQ Control (414729)
- RTS-W Wireless Timer (414920)
- FIDT 6 Insulated Flex Duct (411064)
- ADC 6 Shut-off Damper w Motor (44967)
- MGE 6 Metal Exhaust Grill (411371)
- ECO-Touch® Auto IAQ (414727)
- COM6P Supply and Exhaust Hoods (40222)
- HS 6W External Louver Exhaust (45153)
- Filter,MERV8,200 cfm,Repl.kit (414922)
- MGS 6 Metal Supply Grill (411242)

## Documents

- 445508 VER 200 IOM EN FR.pdf
- 463278 VER200 Spare Part List.pdf
- 445528 VER200 Spec Sheet.pdf

## Specification

### Fans

Two (2) factory-balanced fans with backward curved blades. Motors come with permanently lubricated, sealed ball-bearings to guarantee long life and maintenance-free operation.

### Energy Recovery Core

AHRI certified core made from water vapor transport durable polymer membrane that is highly permeable to humidity. The ERV core is freeze tolerant and water washable. Core dimensions are 11.4" x 11.4" (290 x 290 mm) with a 15" (381 mm) depth.

### Serviceability

Core, filters, fans and drain pan can be easily accessed through latched door. Core conveniently slides out on our new easy glide core guides. 17" (432 mm) of clearance is recommended for removal of core.

### Case

24 gauge galvanized pre-painted steel corrosion resistant

### Insulation

Cabinet is fully insulated with 1" (25 mm) high density expanded polystyrene.

### Filters

Two (2) washable electrostatic panel type air filters 11.75" (216mm) x 15" (380mm) x 0.125" (3mm).

### Controls

External three (3) position (Low/Stand By/Medium) rocker switch that will offer continuous ventilation. Fantech offers a variety of external controls. (see accessories)

### Warranty

5 years on energy recovery core, 7 year on motors, and 5 year on parts.

### Requirements and standards

Complies with the UL 1812 requirements regulating the construction and installation of Heat Recovery Ventilators

Complies with the CSA C22.2 no. 113 Standard applicable to ventilators

Complies with the CSA F326 requirements regulating the installation of Heat Recovery Ventilators

Energy Recovery Core is ISO 846 certified for mold and bacteria resistance and AHRI certified (certificate #8931522)

Technical data was obtained from published results of test relating to AHRI 1060 Standards

### Defrost

A preset frost prevention sequence is activated at an outdoor air temperature of 14°F (-10°C) and lower. During the frost prevention sequence, the supply blower shuts down and the exhaust blower switches into high speed to maximize the effectiveness of the frost prevention strategy. The unit then returns to normal operation and continues cycle.