

This Owner's Manual is provided and hosted by [Appliance Factory Parts](#).



FANTECH FTC99400 Owner's Manual

**[Shop genuine replacement parts for FANTECH
FTC99400](#)**



[Find Your FANTECH Fan Parts - Select From 108 Models](#)

----- Manual continues below -----

HERO 120H Fresh Air Appliance

Item #: 99400

Variant : 120V 1~ 60Hz



Description

- Up to 118 cfm of fresh air
- Integrated MERV8 fresh air filter
- 5" top-mounted duct connections
- Unobstructed front access
- Energy-efficient counter flow core
- Multiple speed operation

While natural infiltration of fresh air thru gaps and cracks in the building envelope offers a certain amount of fresh air, with most new homes this amount of air just is not sufficient. Properly sealed homes require mechanical ventilation to remove excess moisture, odors, and contaminants while providing fresh air for occupants and enhancing comfort.

HERO 120H fresh air appliance provides a controlled way of ventilating a home...
Find more details in our online catalogue

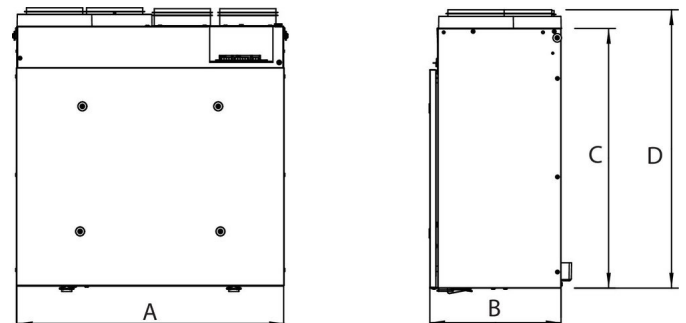
Technical parameters

Product	
Voltage (nominal)	120 V
Frequency	60 Hz
Phase(s)	1~
Input power	165 W
Input current	1.2 A
Air flow	max 119 cfm
Static pressure	0.3 in.wg
Certificate	CSA, HVI, ENERGY STAR
Exchanger	
Exchanger type	Heat recovery (aluminium)
Dimensions and weights	
Weight	41.3 lb
Used for	
Installation placement	Vertical

Performances

	Supply temperature	Net airflow	Consumed power	Sensible recovery efficiency	Adjusted sensible recovery efficiency	Latent recovery / moisture transfer	Apparent sensible effectiveness
	°F (°C)	cfm (L/s)	W	%	%		%
Heat input	32 (0)	70 (33)	60	80	86	0.01	89
	32 (0)	100 (47)	105	75	83	0.01	85
	32 (0)	117 (55)	160	70	79	0.02	81
	-13 (-25)	100 (32)	100	63	67	0.05	95

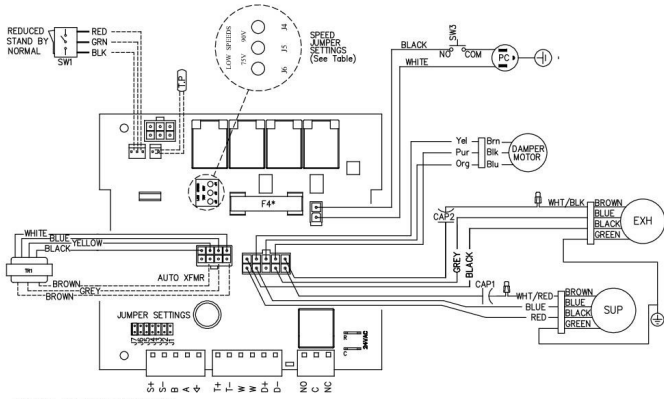
Dimensions



Model	A	B	C	D	Duct Size
HERO 120H	23 1/4 (590)	11 1/2 (291)	22 5/8 (575)	24 1/4 (616)	5 (127)
HERO 150H	27 7/8 (707)	13 3/8 (341)	23 (285)	24 7/8 (626)	6 (152)
HERO 200H	27 7/8 (707)	15 3/8 (391)	23 (285)	24 7/8 (626)	6 (152)
HERO 150H-EC	27 7/8 (707)	13 3/8 (341)	23 (285)	24 7/8 (626)	6 (152)
HERO 250H-EC	27 7/8 (707)	15 3/8 (391)	23 (285)	24 7/8 (626)	6 (152)

Dimensions in inches (mm).

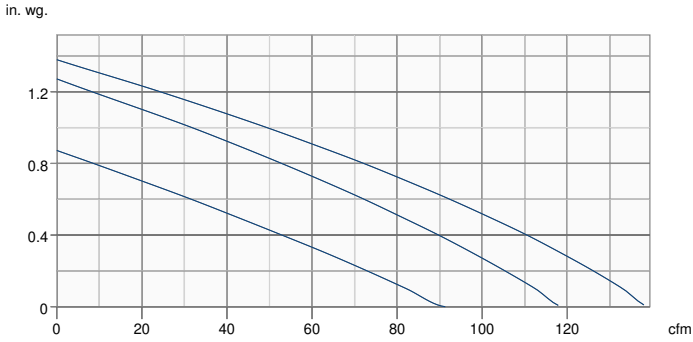
Wiring



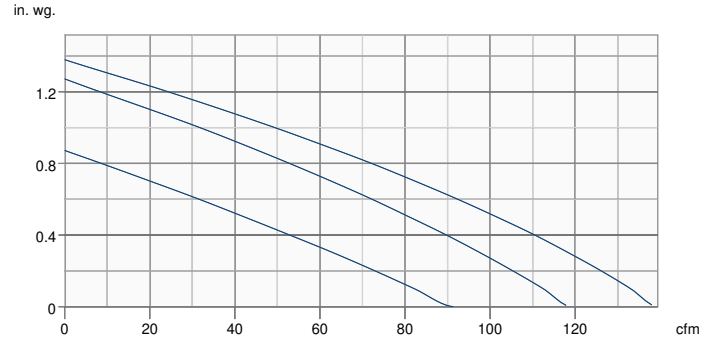
*F4 is BA Fast Acting with I2T > 184
 - - - - - Low voltage factory wiring
 ———— Line voltage factory wiring

Model	JUMPER SETTINGS							Low Speed Jumper Settings
	J7	J6	J5	J4	J3	J2	J1	
HERO 120H	ON	OFF	OFF	OFF	OFF	ON	ON	75V
HERO 150H	ON	ON	OFF	OFF	OFF	ON	OFF	
HERO 200H	ON	ON	OFF	OFF	OFF	ON	OFF	

Supply - Performance curve



Extract - Performance curve



Unit	Supply	Extract
Required air flow	-	-
Working air flow	-	-
Required external pressure	-	-
Working air pressure	-	-
Power	-	-
Current	-	-
Air density	0.075 lb/ft³	
Fan control - RPM	-	-

Accessories

- | | |
|-------------------------------------|---|
| CO2RT-R Transmitter (99315) | Contractor Commissioning Kit (463311) |
| ECO-Feel® Auto IAQ Control (414729) | ECO-Touch® Auto IAQ (414727) |
| RTS-W Wireless Timer (414920) | COM5P Supply and Exhaust Hoods (40223) |
| FIDT 5 Insulated Flex Duct (411062) | Filter, MERV8, HERO120H, Repl. kit (428525) |
| MGE 5 Metal Exhaust Grill (411370) | MGS 5 Metal Supply Grill (411369) |

Documents

- 444776 HERO 120H Spec Sheet.pdf
- 934387 HERO 120H Dimensional Submittal.pdf
- E1934 HERO Brochure.pdf
- 428486 HERO IOM EN FR.pdf
- HERO Series Spare Part List.pdf
- HERO 120H Dimensional drawings.dxf