

This Owner's Manual is provided and hosted by [Appliance Factory Parts](#).



# GE WSM2420D1WW Owner's Manual

[Shop genuine replacement parts for GE  
WSM2420D1WW](#)



[Find Your GE Washer Parts - Select From 4591 Models](#)

----- Manual continues below -----

# Instruction Sheet

## to Replace Thin Twin Tub

### **⚠ WARNING**



**Electrical Shock Hazard**  
 Disconnect power before servicing.  
 Replace all parts and panels before  
 operating.  
 Failure to do so can result in death  
 or electrical shock.

#### Kit Contains:

- 1 Tub
- 1 Center Post Gasket
- 1 Instruction Sheet

#### Tools Needed:

- 5/16" Nut Driver
- 5/16" Socket and Wrench
- 7/16" Socket and extension
- Phillips Screw Driver
- Needle Nose Pliers
- Loctite 3035
- Spanner nut Wrench
- Hammer

#### Safety Equipment:

- Gloves
- Sleeves
- Safety Glasses

1. Unplug washer or disconnect power.
2. Remove back splash. See *Figure 1*.

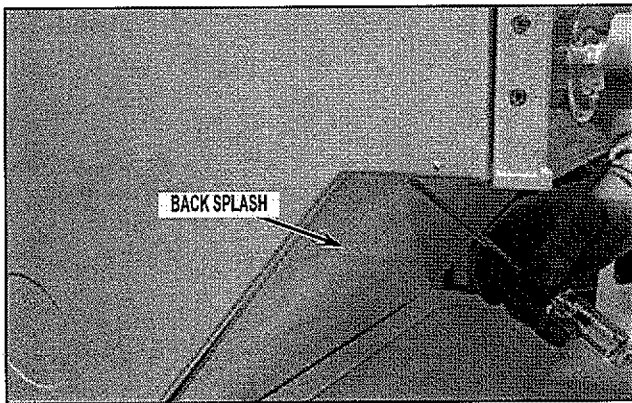


FIGURE 1

3. Remove the two (2) 5/16" bolts that attach top. See *Figure 2*.

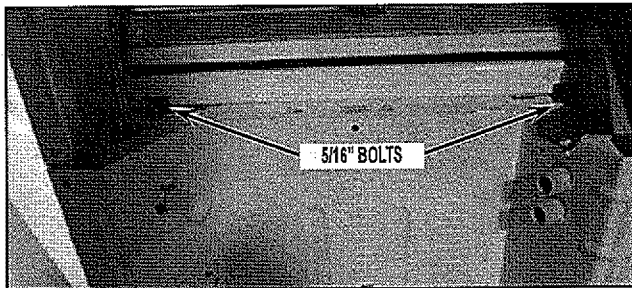


FIGURE 2

4. Slide the top forward gently. Lift the back a little to make sure you don't catch the red retainer clips. (Ignore that the back splash panel is still installed in the following picture. It should have already been removed in step 2.). See *Figure 3*.

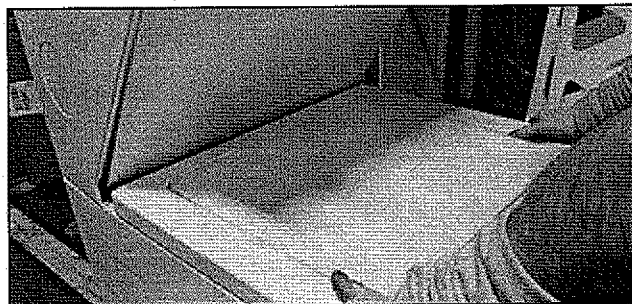


FIGURE 3

5. Unplug lid switch, remove top, and set aside. See *Figure 4*.



FIGURE 4

6. Using a 5/16" socket, remove the two (2) front panel screws. See *Figure 5*.

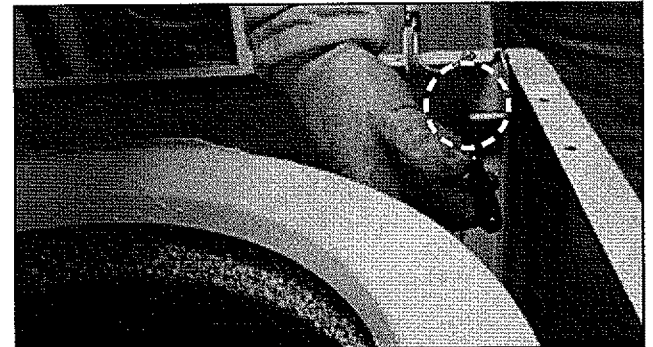


FIGURE 5

7. Lift front panel straight up to remove. See *Figure 6*.

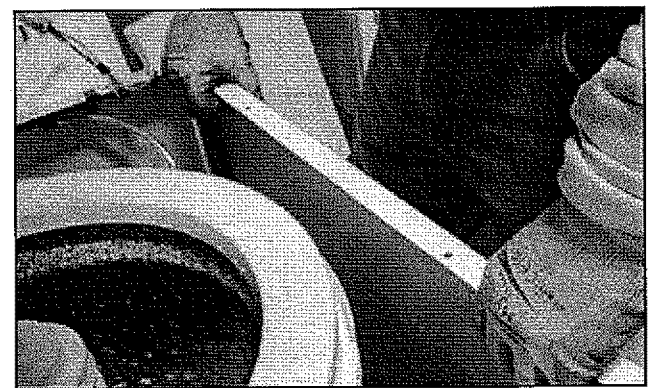


FIGURE 6

(continued)

8. Remove the agitator cap, barrier cap and 7/16" bolt. See Figure 7.

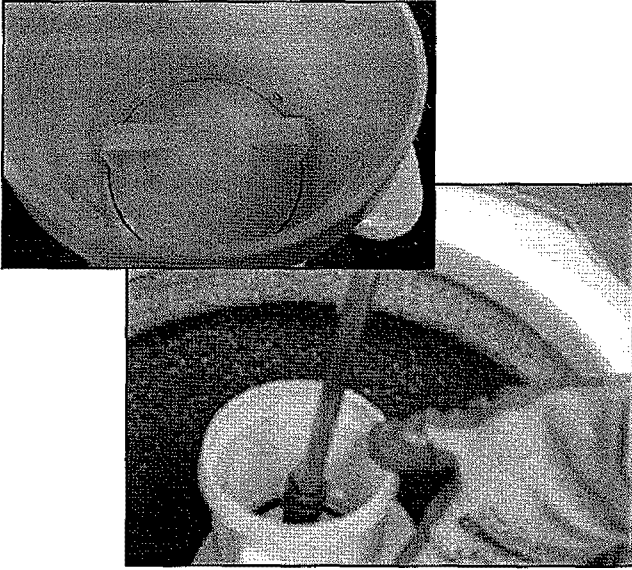


FIGURE 7

9. Unsnap and remove the tub ring. Lay over side panel. See Figure 8.

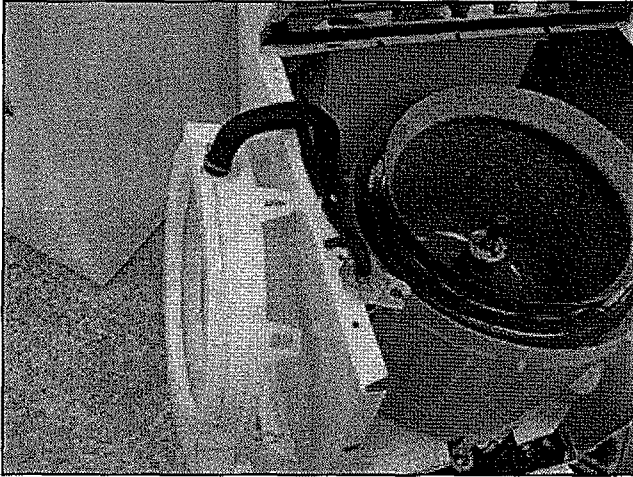


FIGURE 8

10. Unplug washer motor harness. See Figure 9.

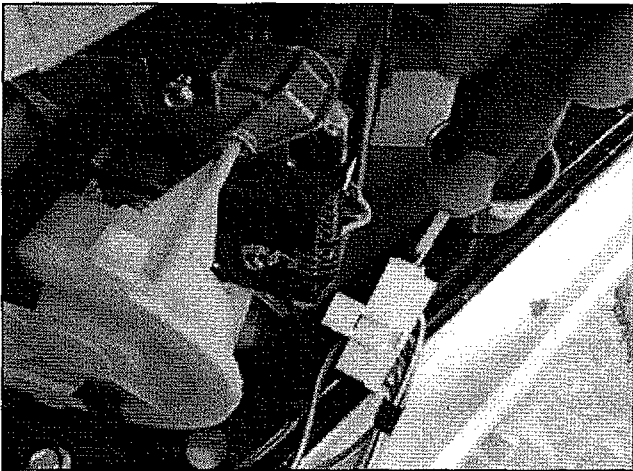


FIGURE 9

11. Un-screw ground wire. See Figure 10.

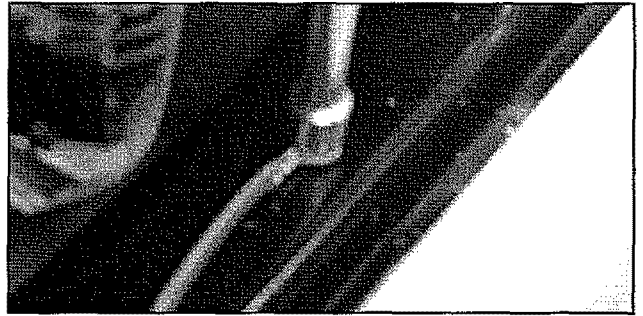


FIGURE 10

12. Remove the two lower plate bolts (1/2"). See Figure 11.

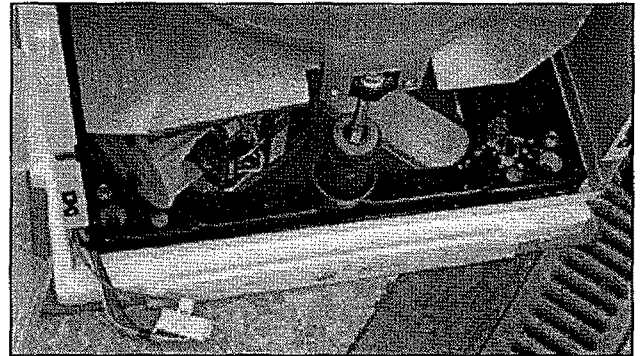


FIGURE 11

13. Unplug the Pressure Hose and remove from the tub. See Figure 12.

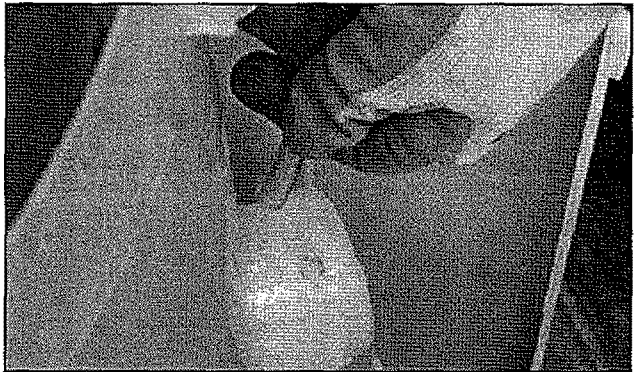


FIGURE 12

14. Slide the base assembly out as shown in the picture. See Figure 13.

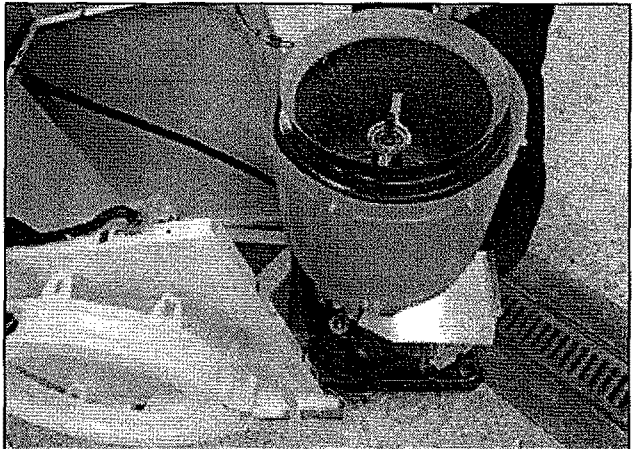


FIGURE 13

15. Remove Basket and Drive Block. See *Figure 14*.

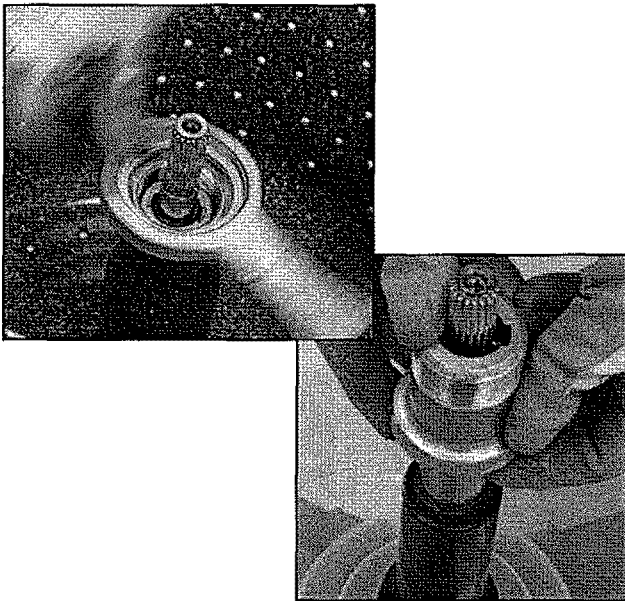


FIGURE 14

16. Remove Drain Hose: Remove the upper clamp and slide the hose off of the tub port. See *Figure 15*.

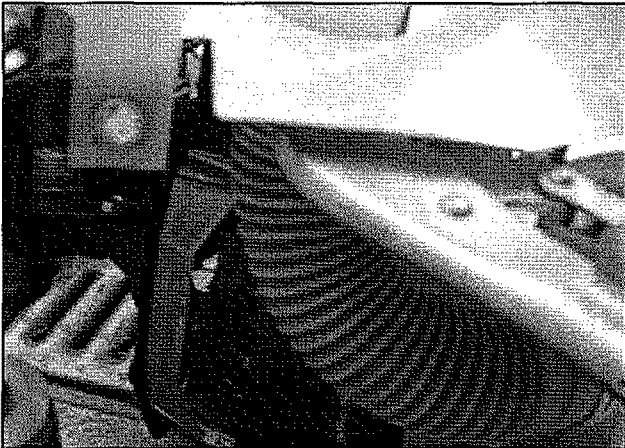


FIGURE 15

17. Remove counterbalance spring located towards the rear of the tub. See *Figure 16*.



FIGURE 16

18. Remove the six (6) tub screws. See *Figure 17*.



FIGURE 17

19. Use dish soap or rinse aid on new center post gasket to help insert into the new tub assembly. Ensure that the center post gasket is inserted correctly as shown in the picture below. See *Figure 18*.

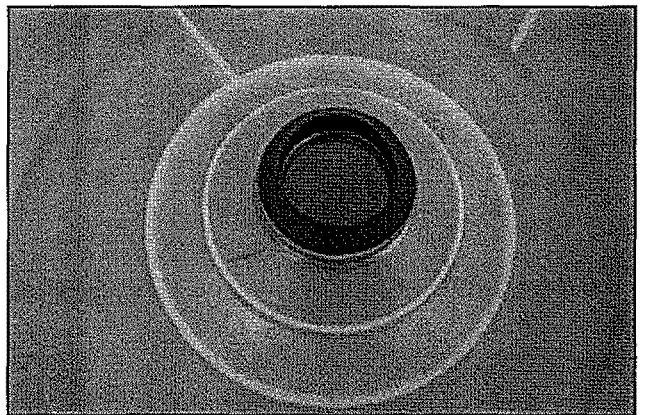


FIGURE 18

20. Reassemble the washer. Ensure that all connections are made.

21. Replace all parts and panels.

## **⚠ WARNING**



### **Electrical Shock Hazard**

**Plug into a grounded 3 prong outlet.**

**Do not remove ground prong.**

**Do not use an adapter.**

**Do not use an extension cord.**

**Failure to follow these instructions can result in death, fire, or electrical shock.**

22. Plug in washer or reconnect power.

23. Run the washer through a cycle and verify that it runs as intended with no leaks.